



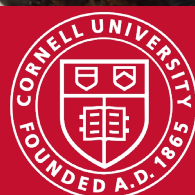
*Photo credit-
Kim Knappenberger*

Cornell Cooperative Extension
Lake Erie Regional Grape Program



PennState Extension

Building Strong and Vibrant New York Communities
Diversity and Inclusion are a part of Cornell University's heritage. We are a recognized employer and educator valuing AA/EEO, Protected Veterans, and Individuals with Disabilities.



In this copy:

You can still reserve your LERGP 2025 Planning Calendar now! [page 3](#)

Winter Grape Grower Conference Registration is OPEN! [page 4](#)

Payments for Farmers Available Through FSA's NEW Marketing Assistance for Specialty Crops (MASC) program-**DEADLINE TOMORROW!** Andrew Holden- [page 5](#)

Monitoring Grape Bud Hardiness, Heavy Snow-Jennifer Phillips Russo- [page 9](#)

Free Respirator Fit Test, EPA Herbicide AND Insecticide Strategy Updates- Megan Luke- [page 14](#)

VIP, NEWA Updates- Kim Knappenberger- [page 16](#)

Jennifer Phillips Russo - LERGP Viticulture Specialist:

jjr268@cornell.edu

Cell: (716) 640-5350

Megan Luke –LERGP Penn State Extension Viticulture and Tree Fruit Educator

MFL5873@psu.edu

Cell:(716) 397-9674 Office:(814) 825-0900

Andrew Holden-LERGP Penn State Extension Business Management Educator

azh6192@psu.edu

716-792-2800 ext 202

Cell: 716-640-2656

Kim Knappenberger – Extension Support Specialist

ksk76@cornell.edu

716-792-2800 ext 209

Kate Robinson – Administrative Assistant

kjr45@cornell.edu

716-792-2800 ext 201

[Click here to
watch Podcasts](#)

The Lake Erie Regional Grape Program is a Cornell Cooperative Extension partnership between Cornell University and the Cornell Cooperative Extensions in Chautauqua, Erie and Niagara county NY and in Erie County PA.

LERGP Vineyard Planning Calendar 2025



You can still contact me to secure your LERGP 2025 Planning Calendar. We are not mailing them but we can arrange for pick up at either the NE Lab or CLEREL. They are only available to those that contact me and make those arrangements.

I look forward to hearing from you!

-Katie

Join the New York Wine & Grape Foundation!

Membership starts at just \$50 per year for Growers & \$300 for Wineries

"The small investment in membership helps to provide funding for research that pays long lasting dividends that can't be denied. I've been a dues paying member from day one..."

– Jim Joy, JM Joy Farms



**Dawn and Bob Betts
Betts Farm**

2024 NYWGF Grower Award Recipient

**Boldly,
NY.**
newyorkwines.org

Visit newyorkwines.org/membership to learn more!

2025 LERGP Grape Grower Conference

*Thursday, March 20, 2025
SUNY Fredonia William's Center*

Registration is open!



We hope you have a wonderful holiday season!

*We look forward to seeing you
in the New Year!*

Business Management

Andrew Holden, Business Management Educator, Penn State University, LERGP

DEADLINE FRIDAY (1/10)!

Payments for Farmers Available Through FSA's NEW Marketing Assistance for Specialty Crops (MASC) program

The USDA has announced a 2-day extension to the MASC Program and has also increasing the MASC payment limit from \$125,000 to \$900,000.

MASC helps specialty crop producers expand markets and manage higher costs with no cost to the producer. This program offers a payment to producers based on their previous year of sales. The program was announced as a onetime event, so do not miss this opportunity if you are eligible. I **highly recommend** you consider applying for this program with your local FSA Office. The extension and increased limit may indicate that there are more funds available than previously anticipated. For most operations, you can apply for this over the phone and computer, without having to go in. **The deadline is this Friday (1/10/25)** so please contact your local FSA office prior to the 10th.

CHAUTAUQUA COUNTY FARM SERVICE AGENCY
220 FLUVANNA AVE., SUITE 600
JAMESTOWN, NY 14701
(716) 664-2351

ERIE COUNTY PA FARM SERVICE AGENCY
12723 ROUTE 19 S WATERFORD, PA 16441-9027
(814) 796-5031

CATTARAUGUS COUNTY FARM SERVICE AGENCY
8 MARTHA ST ELLICOTTVILLE, NY 14731-1765
(716) 699-2375

ERIE NY COUNTY FARM SERVICE AGENCY
50 COMMERCE WAY EAST AURORA, NY 14052-2162
(716) 652-1400

NIAGARA COUNTY FARM SERVICE AGENCY
4487 LAKE AVE LOCKPORT, NY 14094-1139
(716) 433-6703



EcoSwing®
BOTANICAL FUNGICIDE

OMRI LISTED

EcoSwing® is a botanical fungicide created using proprietary plant extracts from the Swinglea glutinosa tree. EcoSwing features proven efficacy on several key spring and summer pathogens. Incorporating EcoSwing as a preventative application into an integrated disease management program allows for the addition of an alternative mode of action for improved disease control and resistance management.

- 4-hour REI & 0-day PHI
- Flexibility and versatility for your **disease control program**
- U.S. EPA registered tolerance exemption
- Favorable profile for applicators, handlers, and field workers
- Compatible with other fungicides and insecticides

GOWANCO.COM **Gowan**
USA

Ecoswing® is a registered trademark used under license by Gowan Company, L.L.C. The OMRI Listed seal is a registered trademark of OMRI. *These diseases are labeled via FIFRA 2(ee) in the state of CA. Please refer to the product label for a complete list of diseases. Always read and follow label instructions.

Who Is Eligible?

- Fruits (fresh, dried); (**Both juice and wine grapes are eligible**)
- Vegetables (including dry edible beans and peas, mushrooms, and vegetable seed);
- Tree nuts;
- Nursery crops, Christmas trees, and floriculture;
- Culinary and medicinal herbs and spices; and
- Honey, hops, maple sap, tea, turfgrass, and grass seed.

Eligible producers or legal entities must:

- Have an average adjusted gross income (AGI) of less than \$900,000 for tax years 2021, 2022, and 2023, unless the producer or legal entity's average adjusted gross farm income is at least 75 percent of their average AGI;
- Be in the business of producing a specialty crop at the time of application and be entitled to an ownership share and share in the risk of producing a specialty crop that will be sold in calendar year 2025;
- Be a U.S. citizen, resident alien, partnership, corporation, limited liability company, or other organizational structure organized under state law, Indian Tribe or Tribal Organization, or a foreign person or foreign entity who meets certain eligibility requirements;
- Comply with the provisions of the "Highly Erodible Land and Wetland Conservation" regulations, often called the conservation compliance provisions; and
- Not have a controlled substance violation.

Free PSU Webinar 1/10/25: Can You Afford Employees at Your Farm Business?

Gain vital knowledge about managing employee finances for your farm or food business, including controlling labor costs for sustainability. Make informed decisions to ensure success in your 2025 business endeavors.

What will you learn?

Strategies for Calculating and Controlling Labor Costs: Gain a deep understanding of how to accurately assess, budget for, and manage labor expenses in your farm or food business, helping you maintain profitability.

Event Details

Join this free webinar to learn how to effectively evaluate, budget, and control labor costs in your farm or food business for enhanced profitability.

This event is being offered at no charge to participants.

Registration is required to receive the link to access the webinar.

A link to the recorded webinar will be emailed to registrants within ten business days after the live event. The recording will be accessible for six months from the event date.

[Register Here](#)

Start 2025 Strong: Elevate Your Team's Skills with Online Leadership and Language Training!

Start the new year by sharpening your leadership skills with *Ag Supervisory Leadership (ASL) 104: Staffing and Organizing Your Team*. This essential online course, starting January 17, 2025, is perfect for farm managers, supervisors, and HR professionals eager to build a stronger, more effective team.

Course topics:

- Becoming a preferred employer
- Personnel planning
- Job descriptions
- Avoiding bias and discrimination
- Recruiting and interviewing
- The selection process
- Hiring and onboarding

Key Details:

- **Start Date:** January 17, 2025
- **Live Sessions:** Thursdays at 3 PM ET (January 23 – February 27, 2025)
- **Cost:** \$275 (NY residents) | \$325 (Out-of-state)
- **Scholarship:** \$100 for eligible dairy producers

Pre-register by January 22, 2025.

For more information or to register, visit our [ASL page](#).

Another opportunity for skill development is our **Agricultural English Mentorship (AEM) Program**:

The AEM program helps Spanish-speaking farm employees improve their English through professional instruction, mentorship, and practical farm scenarios. This opportunity will only be available for a limited time.

Key Features:

- **Mentorship:** Each farm assigns an English-speaking mentor for weekly 15-minute sessions, focusing on farm-specific vocabulary.
- **English Instruction:** Participants learn at their own pace with pre-recorded videos and live Zoom sessions covering pronunciation, grammar, and farm-related terms.
- **Course Topics:** Includes lessons on the alphabet, greetings, farm culture, employee handbooks, and more.

Course Details:

- **Start Date:** January 17, 2025
- **Live Sessions:** Fridays, January 24–February 28, 2025
- **Platform:** Moodle app (accessible on phones and computers)
- **Commitment:** 2 hours per week, including mentor meetings

Why Participate?

Improve communication, increase productivity, and support career growth for farm employees.

For more info or to register, visit [AEM Program page](#) or contact Mary Lewis at ml2656@cornell.edu.

Registration closes 1/23.

My contact information:

Andrew Holden, Business Management Educator

Mobile (call or text): (716) 640-2656 Office: (716) 792-2800 Email: AZH6192@psu.edu

**YOU'RE GREAT AT FARMING.
WE'RE GREAT AT INSURANCE.**



27 E MAIN STREET
WESTFIELD, NY
716 269 4322



 **Clover Hill**
 **Sales** LLC

10401 Sidehill Road, North East, PA 16428

814-725-3102

sales@cloverhillsales.com

www.cloverhillsales.com



**DURAND
WAYLAND**

WOODS

Woods Equipment Company



EDWARDS
EQUIPMENT COMPANY



TISCO



**STOLTZFUS
SPREADERS**

**Harvester Parts and Belting
Southern Yellow Pine Posts
Tractor Tires & Tubes • And So Much More!**

Westfield
AG & TURF LLC

Andy Campell
General Manager

716-326-4671 • 7521 Prospect Rd • Westfield, NY 14787
www.westfieldagandturf.com

We Service What We Sell!

CASE II

Cub Cadet

OXBO

YANMAR

Viticulture

Jennifer Russo, Viticulture Extension Specialist, LERGP

In the Vineyard

Monitoring Grape Bud Hardiness

Dr. Jason Londo, and the LERGP team have been collaborating on grapevine cold hardiness monitoring since 2019 while he was a Research Geneticist with the USDA-ARS Grape Genetics Unit, located at Cornell AgriTech in Geneva, New York. Jason joined Cornell University's Horticulture Section faculty in January 2022 as an associate professor of fruit crop physiology and climate adaptation. Dr. Londo's lab focuses on understanding the interaction between climate stresses and genetic diversity in fruit crops, manifested as physiological optimization and adaptation. Dr. Londo manages the Cornell grapevine cold hardiness monitoring program and [associated website](#). His current research is focusing on understanding aspects of winter hardiness and spring deacclimation in apples and grapes to identify the rootstocks and scion combinations that provide the greatest resistance to early winter warming conditions.

Digital Thermal Analysis (DTA), which involves collecting and subjecting buds to controlled freezing runs, is a proven method for documenting bud freezing temperatures. Used in conjunction with min/max temperature records, it has been proven to correlate well with observed bud injury in vineyards (determined by direct examination of buds, i.e. 'bud cutting').

The Lake Erie Regional Grape Program has acquired equipment (freezers and data acquisition units) to use Digital Thermal Analysis (DTA) at the Cornell Lake Erie Research and Extension Laboratory (CLEREL). The DTA unit at CLEREL allows the research and extension team to process extension samples at CLEREL and do more frequent and detailed evaluations. A major goal is to document how crop adjustment and crop load impacts bud hardiness and potential crops of Concord, Niagara, and other cultivars that we monitor – and thereby evaluate the economic risks of over cropping and potential freeze damage based on production practices. This information would allow grape growers to adjust practices and respond to climatic events.

There were many objectives of this research including weekly monitoring of Lethal Temperature Exotherm (LTE's) during acclimation, dormancy, and deacclimation across the Lake Erie, Finger Lakes, and Hudson Valley grape regions. Another objective was to post the data to the at [Bud Hardiness Data Website Click Here](#), where winter hardiness data from differential thermal analysis has been shared with industry since 2009, and is posted continually during the dormant season, providing growers with up to date information about potential winter injury to buds. Dr. Londo and his lab were tasked to develop a temperature-driven model that is based on real measurements of the physical response of vines to different de-acclimation temperatures. They used data collected from this project to validate the model, which we hope will provide New York and Pennsylvania growers with accurate predictions of bud freezing temperatures (based on daily min/max temperatures) and will be accessible regionwide through the NEWA weather site. Once this system has been validated, we'll discontinue collections at commercial sites and we are discussing possibly by 2026.

Having bud hardiness and injury information posted in a grower-friendly format allows growers to make better decisions about the need to monitor and respond to potential injury events. Our

information has identified freeze injury events in two of the past five years. Equipment for DTAs at CLEREL expanded the number and extent of LTEs in the region, and allowed additional information to be collected from existing research projects at CLEREL. All of this data was used to help train the model and generate accurate predictions of bud freezing temperatures.

The new site essentially has two parts. The first one is a broad, regionwide map showing estimated freezing tolerance (measured by LT50, the temperature needed to kill 50% of buds in a sample) for several vinifera, hybrid and native varieties. These maps are based on the models that Jason and his lab have been developing for several years now, plus weather data from various weather stations across the region. You can see a map of either freeze tolerance or potential damage by cultivar, with color coding on the map based on the model's output for those areas. Currently, the freeze tolerance scale stretches from a little above -20°C (-4°F) to almost -30°C (-22°F).

The second part of the new site lets users drill down to more specific locations. Below the regional map, you'll find a map of the Northeast with a lot of dots on it. Each dot represents a weather station that you can select to see what the predicted LT50 values are for each of those locations based on the models. The two sites with grape clusters represent Geneva and Portland, where measurements are currently being done to continue honing the models. The results of those measurements are shown for those two locations.

When you select a particular station, the windows below will show the measured low temperatures at that site, along with the predicted freezing tolerance for the chosen cultivar, which can be selected by the user. These graphs will look more familiar to those who have looked at these charts in previous years. In the case of Portland (Figure 5), the chart displays the LT10, LT50 and LT90 values for each cultivar, along with the predicted LT50 value from the model (the gray line). If you hover your cursor over each of the lines, it will show you the value for each time point that is charted. As you can see in Figure 1. below, the low temperature blue line does not intersect with any of the models or LT10, 50, 90 measurements indicating that there isn't potential for injury for Concord to date. As of January 6, 2025, Concord LT50 is -16.6°F , Cabernet Franc is -10.84°F (Figure 2.), Riesling is -12.28°F (Figure 3.) and our low temperature has not gone into negative digits.

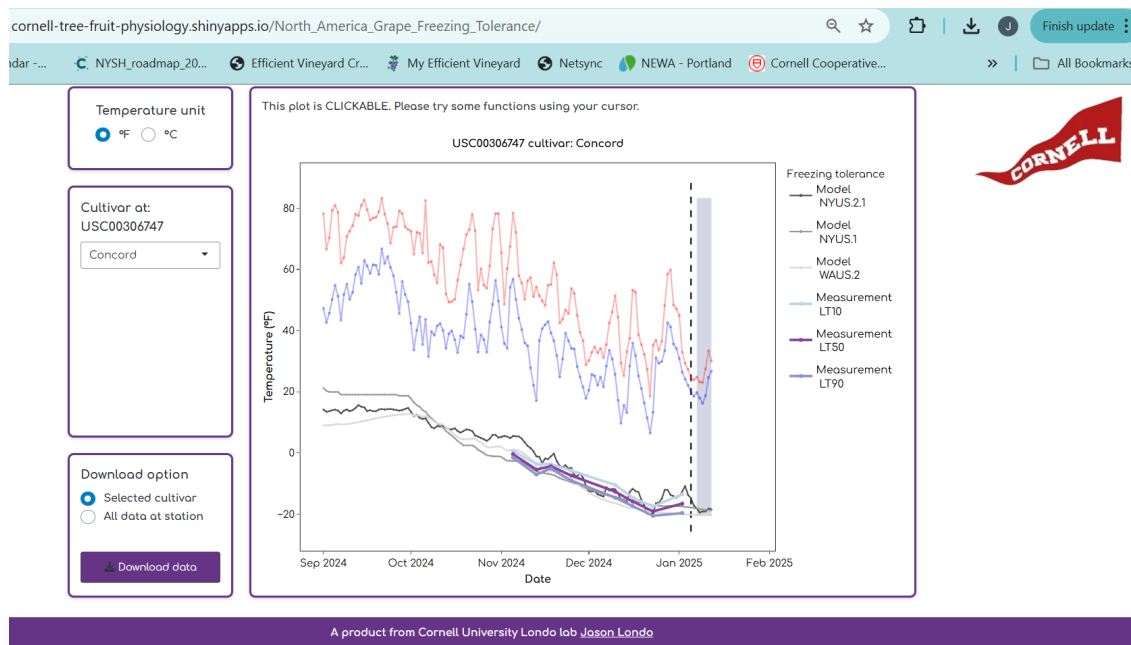


Figure 1. Screenshot of the Cornell Cold Hardiness Website data for Concord in Portland, NY first week of 2025 and previous weeks.

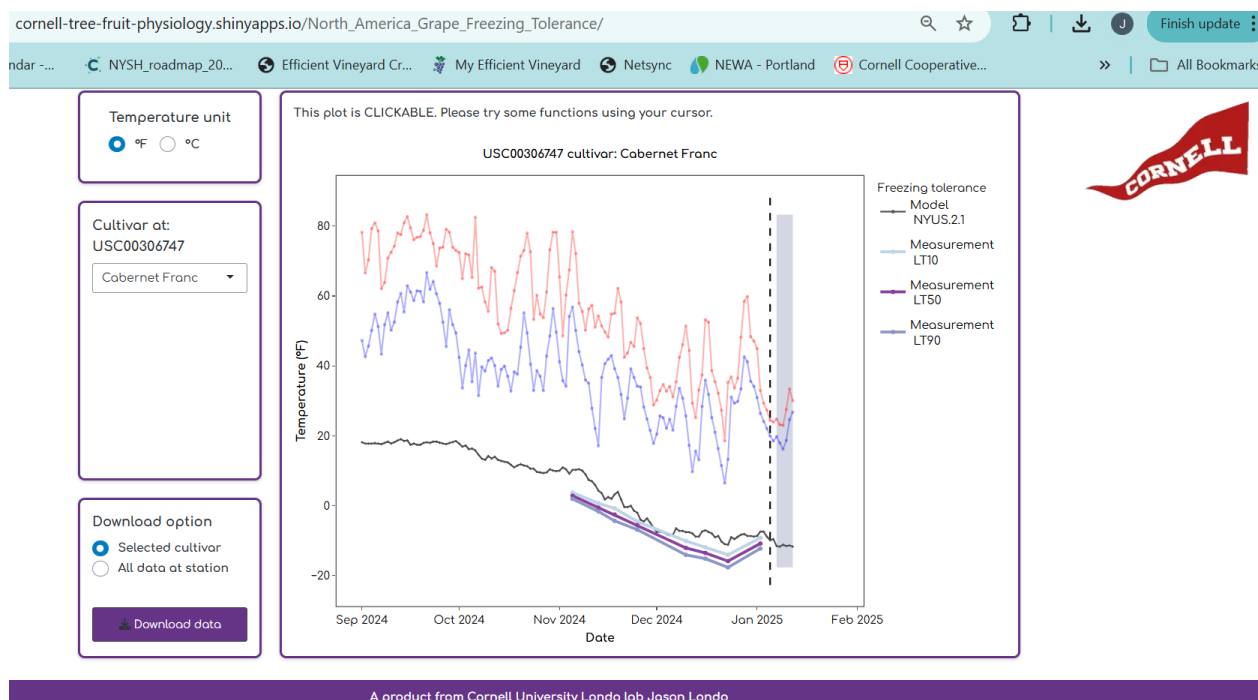


Figure 2. Screenshot of the Cornell Cold Hardiness Website data for Cabernet Franc in Portland, NY first week of 2025 and previous weeks.

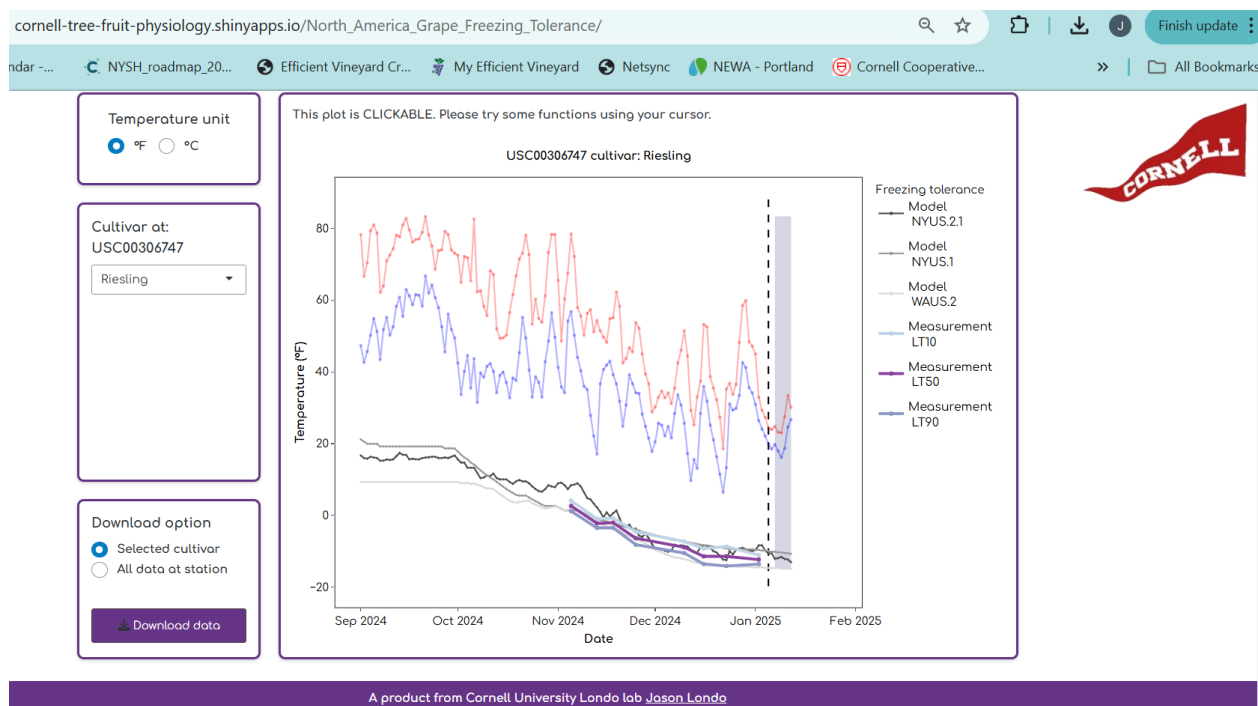


Figure 3. Screenshot of the Cornell Cold Hardiness Website data for Riesling in Portland, NY first week of 2025 and previous weeks.

Heavy Snow Accumulations

Some of our higher elevations have experienced heavy snowfall again this season and Extension Leadership has asked us to remind our growers of resources out there that may be useful. Many of your communities were impacted with heavy snow this weekend. Please see resources from NY EDEN to push out to your communities.

- [Dos and Don'ts of Barn Snow Removal \(PDF\)](#) by Curt Gooch and Sam Steinberg, Cornell University
- [Farmstead Recovery Checklist: Snow Load & Barn Collapse \(PDF\)](#) by NYS EDEN
- [Heavy Snow Loads \(PDF\)](#) by Curt A. Gooch, Cornell University

Winter Programming Opportunities

It is the time of year when we participate in virtual programming events to continue to provide educational outreach during the winter months. The **Eastern Viticulture and Enology Forum Series (EVEF)** is a collaborative series of webinars for grape growers and winemakers coordinated by PSE, Cornell, UME, and other land grant viticulture and enology extension programs. Please see below for details and the link to our first EVEF webinar on **vineyard nutrition, Tuesday, January 21 from noon to 1:30 p.m. Our very own Dr. Terry Bates will be one of the panelists.**

Vineyard Nutrient Management: Optimize vineyard nutrients for healthy vines and quality fruit

- Understanding and managing vineyard nutrient levels is essential for ensuring healthy grapevine growth, optimal physiological function, and high-quality crop production.
- Grapevines rely on soil mineral nutrient uptake and assimilation, but imbalances—whether deficiencies or excesses—can significantly impact plant metabolism, fruit set, and overall fruit quality.
 - Deficiencies may limit growth and productivity
 - Excessive nutrients can cause toxicity or reduce fruit quality.
- This event will explore the importance of quantifying vine nutrient status through soil and tissue analysis to maintain balanced nutrient levels, supporting sustained vine health and optimal production, including:
 - Fundamentals of vineyard nutrient management
 - Diagnosing nutrient status through tissue analysis
 - Soil health and considerations for mineral nutrients

Event Details

- This 90-minute live webinar is free and will address pre-submitted and live questions while reviewing current best practices in vineyard nutrient management.
- Upon registration, a Qualtrics link will be provided for submitting questions to the panelists in advance.
- This event is being offered at no charge to participants.
- Registration is required to receive the link to access the webinar.

<https://extension.psu.edu/vineyard-nutrient-management-expert-forum-discussion>

Eastern Viticulture and Enology Forum Series (EVEF) is a collaborative effort between the Penn State Extension Grape and Wine Team and several viticulture and enology Extension programs from the following U.S. land grant institutions: Colorado State University, Cornell University, University of Georgia, Iowa State University, University of Maryland, Michigan State University, University of Minnesota, North Carolina State University, Ohio State University, and Rutgers University, Texas A&M University, University of Vermont, Virginia Tech, and University of Wisconsin. As part of the Eastern Viticulture and Enology Forum Webinar Series, this session is a collaborative effort between these viticulture and enology extension programs coordinated for grape growers and winemakers.

A link to the recorded webinar will be emailed to registrants within ten business days after the live event. The recording will be accessible for six months from the event date.

Ontario Fruit and Vegetable Convention 2025

Another opportunity to expand your knowledge and get out of the country for a few days (that makes me giggle because it is right across the border) is the Ontario Fruit and Vegetable Convention. I was a guest speaker along with other Cornell University Educators at this event last year and it was a great opportunity. The 2025 Highlights Brochure is now available. Discover what's in store and explore the interactive digital brochure [Click Here for more information](#).



**NY FARMNET**
Brightening the Future of Agriculture Since 1986

Farmers | Farm Families | Agribusiness

- Financial analysis
- Personal well-being
- Mental Health & Stress
- Retirement and estate planning
- Family business relationships
- Communication
- Business planning



100% free, 100% confidential

Call 1-800-547-3276

 **Cornell CALS**
College of Agriculture and Life Sciences

 **Dyson**
Cornell SC Johnson College of Business



LARRY ROMANCE & SON, INC.

Parts - Sales - Service

Come see us for all your Vineyard - Dairy - Construction & Consumers Needs

SHERIDAN, NY • 2769 ROUTE 20
(716) 679-3366 • tractorsales@netsync.net

ARCADE, NY • 543 W. MAIN ST.
(585) 492-3810

www.larryromanceandson.com

PA Update

Megan Luke, Penn State Extension Viticulture and Tree Fruit Educator

SAVE THE DATE REMINDER

Free respirator fit testing at Burch Farms on Wednesday, February 12th

Penn State Extension's Pesticide Education team offers this free service, which takes place each year during the Winter Commercial Tree Fruit event in Erie County. You DO NOT have to participate in the Tree Fruit event to receive a respirator fit test and the required 30-minute training that comes with a letter or certification. The testing and certification are free; you can sign up for a spot and show up only during that time.

Free respirator fit testing is open to any PA grower and a limited number of NY growers IF you are a LERGP member. Don't hesitate to contact Megan Luke to be put on the list to schedule your test when registration opens.

Remember that respirator fit testing is mandatory for pesticide applicators using pesticides that require respirators. Clean and inspect your device for damage and replace cartridges as needed.

EPA Herbicide AND Insecticide Strategy Updates

If you haven't read about the upcoming changes to pesticide labeling, please see the resources listed below from previous Crop Updates.

****The first pesticide labels containing these new sections on mandatory mitigation are on shelves as of October 2024****

Pesticides registered for use in grapes scheduled for review in 2025:

- Acetamiprid (Insecticide) EPA-HQ-OPP-2012-0329
- Carbaryl (Insecticide) EPA-HQ-OPP-2010-0230
- Benzovdiflupyr (Fungicide) EPA-HQ-OPP-2024-0458
- Bacillus mycoides isolate J (Fungicide) Docket # TBD
- Dinotefuran (Insecticide) EPA-HQ-OPP-2011-0920
- Imidacloprid (Insecticide) EPA-HQ-OPP-2008-0844
- Iprodione (Fungicide) EPA-HQ-OPP-2012-0392
- Tebuconazole (Fungicide) EPA-HQ-OPP-2015-0378
- Pyrethrin & derivatives (Insecticide) EPA-HQ-OPP-2011-0885
- Tetraconazole (Fungicide) EPA-HQ-OPP-2015-0061
- Thiamethoxam (Insecticide) EPA-HQ-OPP-2011-0581
- Diuron (Herbicide) EPA-HQ-OPP-2015-0077
- Oxyfluorfen (Herbicide) EPA-HQ-OPP-2014-0778

These changes to pesticide use requirements are a drastic change from our standard practices and

require additional record keeping and research before every pesticide application. I will provide more information on these requirements as they become available.

Current status of several pesticides under review:

Ziram- Can be used for the 2025 growing season. A 12-month grace period to remove the product from the pipeline will start in 2025.

Mancozeb- No updates are available at this time. The proposed cancelation of use in grapes is under review after the public comment period closed in Oct. 2024.

Captan- Labels will be updated with the new language in the next 12 months. Review the label carefully at the time of purchase.

Docket information and review timing can be found at:

<https://www.epa.gov/pesticide-reevaluation/upcoming-registration-review-actions>

Docket documents and open comment periods can be found at:

<https://www.regulations.gov/>

Search by docket number listed above, then choose the “docket documents” tab, select “sort by,” and “newest” or “comments due (newer-older).”

EPA’s Bulletin Live! 2 Website can be found here: <https://www.epa.gov/endangered-species/bulletins-live-two-view-bulletins>

Contact information:

Mobile (call or text): (716) 397-9674 (preferred)

Office: (814) 825-0900

Email: MFL5873@psu.edu

CROP GROWERS
Your first choice for crop insurance.

PROTECT YOUR CROP and your farm's bottom line.



Unpredictable weather like late frosts or summer hail storms can damage fruit crops. This can leave you with a total crop loss or damaged fruit you can't market.

Our Crop Growers specialists understand local weather and work with producers to develop a risk management plan that not only aligns with their risk tolerance but helps them meet their financial goals. When Mother Nature leaves a chilling effect across your region, we will make sure you're still standing after the thaw.

Our goal is to protect your investment.

**Find out why we're the first
choice for crop insurance.**

800.234.7012 | CropGrowers.com

CROP GROWERS IS AN EQUAL OPPORTUNITY PROVIDER

Updates and Information

Kimberly Knappenberger, Extension Support Specialist, LERGP

VIP

The end is in sight! We are continuing to wrap up the final projects submitted to the Vineyard Improvement Program. Looking back over the past 6 years we have completed 51 removal projects that add up to over 600 acres of unwanted or abandoned Concord vineyard. Of those 600 acres, a little over 140 acres were replanted to grapes, 80 of which were Concord, 26 Aureore, 13 Ives, and then smaller vineyards of various varieties. Applicants took this opportunity to replace the existing vineyards with one that is more suited to modern operations. GIS and laser plantings in straight rows lend themselves to precision agriculture using automated equipment created to lessen hand labor as well as equipment operator fatigue. Over 300 acres were converted to field crops, and the remainder went to hay fields, pasture, cover crops, Christmas trees, fruit trees, berry bushes, vegetable plantings, cut flowers, and even some lavender, thyme, rosemary, and sage.

The majority of the projects have been in Chautauqua County, but we also went to Cattaraugus, Erie, Niagara, Steuben and Schuyler Counties.



NEWA

We are getting to that time of the year when some of our newer weather stations don't think they are getting enough sun and decide to stop sending data for a while. Currently that includes East Ripley NY and Versailles NY. Sometimes it is Lake City (Mason Farms) PA, Newfane (Chateau

Niagara) NY, and Williamson (Young Sommer) NY. I am told that 3 days of sunshine should get them back online when they decide to do this. Not really sure when that is going to happen, so keep checking back.

Thankfully NEWA does substitute estimated data as long as the station has not been out too long. As a reminder, none of our stations have a heating element in the rain bucket so any precipitation data that is collected is really not very accurate during the winter months.

We do try to keep our lergp.com website updated with the weather data that Ted Teft collects at CLEREL daily. To find that go to the website and scroll down to the Key Stats.

Here is a screenshot of the most recent update:

Key Stats:

Current Concord Phenology at CLEREL

1/7/2025

GDD (Base 50) from Jan 1 = 0


(as reported on NEWA.cornell.edu – Portland station)

Precipitation from Jan 1 = 0.27" (rain/melted snow)

Snow accumulation at CLEREL = <1"

38-year average precip for Jan 7 = 0.65"

Dormant





CONTACT OUR HIGH VALUE CROPS DIVISION:

Jayme Conti - 716-450-1496

Erik Quanbeck - 315-702-3541

LandProEquipment.com



8855 W Route 20 Westfield, NY 14787

(716) 326-4666

JavaFarmSupply.com

Meeting all of your Vineyard Equipment needs!

Chautauqua County Farm Bureau®
is working hard to gain workforce
options, retain necessary
protectants, and ensure policy
that benefits our growers



Join Today!
NYFB.org 800-342-4143



Designed to Increase
Calcium Uptake



Worth its Weight

CONTACT US:

Laing-Gro Fertilizers, Eden, NY: (716) 992-3830
Sam Tischler, Agronomy Manager: (716) 992-3830
John Stierly, Field Rep Northwest, PA: (607) 333-0716

Scan Here for our
Research & Solutions



www.us.timacagro.com



Now in our 40th year, we have a tradition of providing quality products, education and superior service to both farm and home growers. Our products and spray programs are tried and tested in our own vineyards, ensuring you have a solid program for your own vineyard. We deliver products, programs and services to our customers in an efficient and personal way to enhance their growth and profit opportunities for the long term.

We are a proud dealer for -



PRODUCTS & SERVICES

- ☑ Herbicides, Fungicides & Insecticides
- ☑ Bulk & Bagged Fertilizer
- ☑ Soil and Petiole Testing
- ☑ Customized Pesticide and Fertilizer Programs
- ☑ Infaco, Felco and Bahco Shear and Lopper Repair
- ☑ Supplies for Trellis, Pruning, Tying and so much more!



Call us
716-679-1240



Visit our website
www.militellofarmsupply.com



Our location
2929 Route 39, Forestville

Links of Interest:

Cornell Cooperative Extension:

<https://cals.cornell.edu/cornell-cooperative-extension>

Efficient Vineyard:

<https://www.efficientvineyard.com/>

LERGP:

<https://lergp.cce.cornell.edu/>

<https://lergp.com/>

NYSIPM:

<https://cals.cornell.edu/new-york-state-integrated-pest-management>

Veraison to Harvest:

<https://cals.cornell.edu/viticulture-enology/research-extension/veraison-harvest>

