



Skeleton Rachis-
Kim Knappenberger

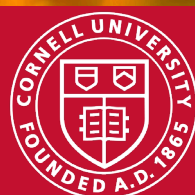
LERGP Crop Update October 24, 2024

Cornell Cooperative Extension
Lake Erie Regional Grape Program



PennState Extension

Building Strong and Vibrant New York Communities
Diversity and Inclusion are a part of Cornell University's heritage. We are a recognized employer and educator valuing AA/EEO, Protected Veterans, and Individuals with Disabilities.



In this copy:

Reserve your LERGP 2025 Planning Calendar now! See options on [page 4](#)

Beneficial Ownership Reports Deadline, PA Ag Innovation Grant Now Open

Andrew Holden- [page 5](#)

IPM Candidate ZOOM Seminars, 2025 What's Your Spray Program, Register Now!

Jennifer Phillips Russo- [page 10](#)

PA Update, Grape Leafhopper, Herbicide and Pesticide Strategy Updates

Megan Luke- [page 13](#)

New NEWA Station-Kim Knappenberger- [page 16](#)

Jennifer Phillips Russo - LERGP Viticulture Specialist:

jjr268@cornell.edu

Cell: (716) 640-5350

Megan Luke –LERGP Penn State Extension Viticulture and Tree Fruit Educator

MFL5873@psu.edu

Cell:(716) 397-9674 Office:(814) 825-0900

Andrew Holden-LERGP Penn State Extension Business Management Educator

azh6192@psu.edu

716-792-2800 ext 202

Cell: 716-640-2656

Kim Knappenberger – Extension Support Specialist

ksk76@cornell.edu

716-792-2800 ext 209

Kate Robinson – Administrative Assistant

kjr45@cornell.edu

716-792-2800 ext 201



[Click here to
watch Podcasts](#)

The Lake Erie Regional Grape Program is a Cornell Cooperative Extension partnership between Cornell University and the Cornell Cooperative Extensions in Chautauqua, Erie and Niagara county NY and in Erie County PA.



Farmers | Farm Families | Agribusiness

- Financial analysis
- Personal well-being
- Mental Health & Stress
- Retirement and estate planning
- Family business relationships
- Communication
- Business planning



100% free, 100% confidential
Call 1-800-547-3276

Cornell CALS
College of Agriculture and Life Sciences

Dyson
Cornell
SC Johnson College of Business



2024 CLUB CAR

XRT 1550 4X4 UTILITY VEHICLE

STARTING AT
\$15,551

- ✓ 4X4
- ✓ AVAILABLE IN KAWASAKI 4-CYCLE ENGINE OR KUBOTA D722 DIESEL ENGINE
- ✓ INDEPENDENT DOUBLE A-ARMS WITH COIL-OVER SHOCK
- ✓ SEMI-INDEPENDENT, 4-LINK SOLID AXLE
- ✓ ONLY 58.5 INCHES WIDE, PERFECT TO FIT IN THOSE TOUGH PLACES
- ✓ POWER TILT BED
- ✓ COMES IN A CREW MODEL



FIND OUT MORE AT

DAVE WARREN POWERSPORTS IN WESTFIELD, NY

7540 US-20, WESTFIELD, NY 14787 | (716) 232-3030

WWW.DAVEWARRENMOTORS.COM

2025 LERGP Calendar: PLEASE READ and RESPOND

We are in the process of putting our 2025 LERGP Planning Calendar together, with updates and new content. We have provided our growers with this useful resource for 4 years now, and hope that you have found it beneficial to your operation.

However, the cost of mailing it has increased significantly, and we can no longer ship the calendar to everyone. We are addressing this by offering 2 options.

Option #1- Reserve your copy of the calendar by contacting me and then picking it up at the CLEREL office or the North East Lab when they are ready.

You must contact me by **Friday, December 6th, 2024**.

Kjr45@cornell.edu

716-792-2800 ext 201

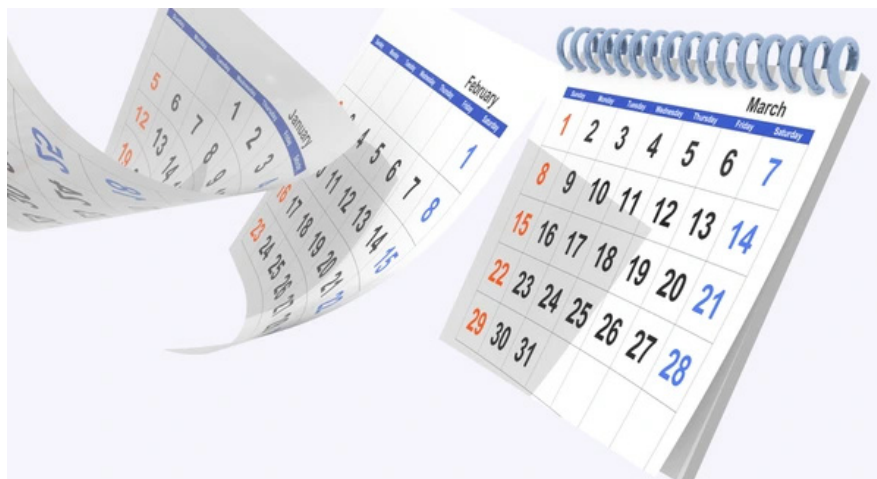
Option #2- Reserve your copy with shipping to your home by sending a check for \$7.00 to **LERGP, 6592 W Main Rd. Portland, NY 14769**

If you are not an LERGP member, the calendar is available for purchase. The charge is \$25.00 plus \$7.00 shipping and handling. You can e-mail me or send your request to purchase in the mail.

The LERGP Planning calendar is a unique useful tool to guide you through the year, with reminders about viticulture and vineyard tasks, IPM scouting and spray timing and business deadlines. We hope that you choose to either have your copy mailed or stop by and see us to pick it up.

I look forward to hearing from you!

Katie



Business Management

Andrew Holden, Business Management Educator, Penn State University, LERGP

Beneficial Ownership Reports (DEADLINE JANUARY 1, 2025)

Farmers who operate as a corporation, LLC, or limited partnership may be required to file Beneficial Ownership Information Report before January 1st, 2025.

A federal law passed in 2021, The Corporate Transparency Act, was enacted to curb illicit financial transactions and money laundering. Part of that is the requirement for businesses to file a BOI Report with the federal government.

There is **no cost** to file this report, but if not filed by Jan. 1, penalties can be as high as \$500 for each day in violation, with criminal penalties up to \$10,000 and possible imprisonment.

Who must file?

Domestic reporting companies are entities created by the filing of a document with a secretary of state or any similar office under the law of a state or Indian tribe.

This generally means that LLCs (including single-member LLCs), corporations and limited partnerships are required to file reports if they are not otherwise excepted from the reporting requirement. The law's 23 exemptions from reporting generally apply only to large entities that already disclose owner information in other ways.

Most tax-exempt entities, however, are not required to file reports, regardless of size.

How to file

Companies can file online, at: <https://boiefiling.fincen.gov/fileboir>.

You may also have your accountant file this report for you.

It is possible that you may have already filed with your accountant earlier in the year. Confirm with them if you believe that to be the case.

More information can be found here: <https://www.extension.iastate.edu/agdm/articles/tidgren/TidFeb24.html>

Pennsylvania - The Agricultural Innovation Grant is NOW OPEN

The Agricultural Innovation Grant should be available to growers, processors, and other entities involved in agriculture in the state.

Eligible Projects

A person or cooperative association who utilizes innovation:

- to improve energy efficiency, improve water quality, reduce water consumption, reduce odors, or address solid waste concerns.
- to improve production, processing, commercialization, or utilization of agricultural commodities.
- technology that assists eligible applicants with the management of their farms, including

diagnostic tools and services.

- technology that assists a packer, processor or cooperative in more efficient sorting, grading, or processing of agricultural commodities.
- that supports cybersecurity or data analytics.
- *See website for more*

Onsite project grant

An eligible applicant may apply for a grant for a project that focuses on implementing innovation practices, technologies or approaches on an individual farm or property producing or processing an agricultural commodity. The following shall apply to a grant under this subsection:

- The amount of the grant should be no less than \$5,000 and no more than \$200,000.
- A grantee must use non-State sourced matching funds equal to at least 50% of the grant amount for the project.

Application Timeline

Applications must be submitted through the [Single Application for Assistance online application system](#) **before 11:59 p.m. on November 15, 2024**. Applications received outside of that application window will not be considered or reviewed.

[Click here for more information](#)

Ag economy is in a recession, says majority of ag economists

By: Ryan Hanrahan

Source: https://farmpolicynews.illinois.edu/2024/10/ag-economy-is-in-a-recession-says-majority-of-ag-economists/?utm_source=newsletter&utm_medium=email&utm_term=Tue+Oct+22+2024&utm_campaign=Ag+economy+is+in+a+recession+says+majority+of+ag+economists

More than half of the 70 agriculture economists [surveyed in Farm Journal's Ag Economists' Monthly Monitor](#) believe that the United States agriculture economy is in a recession, while 75% of those economists surveyed think the ag economy is on the brink of a recession.

"Farmers are seeing heightened volatility in commodity prices as harvest season progresses," Farm Journal's Tyne Morgan reported. "The latest Ag Economists' Monthly Monitor from Farm Journal showed a

KEEP YOUR FARMING OPERATION FINANCIALLY HEALTHY

Crop insurance offers a lot of choices. Which protection is right for your business?

Contact your local Rain and Hail agent to get your crop insurance consultation before it is too late.

Sales closing date is November 20!

For details contact:

GEORGE HAFFENDEN

716.725.7840

ghaffenden@american-national.com

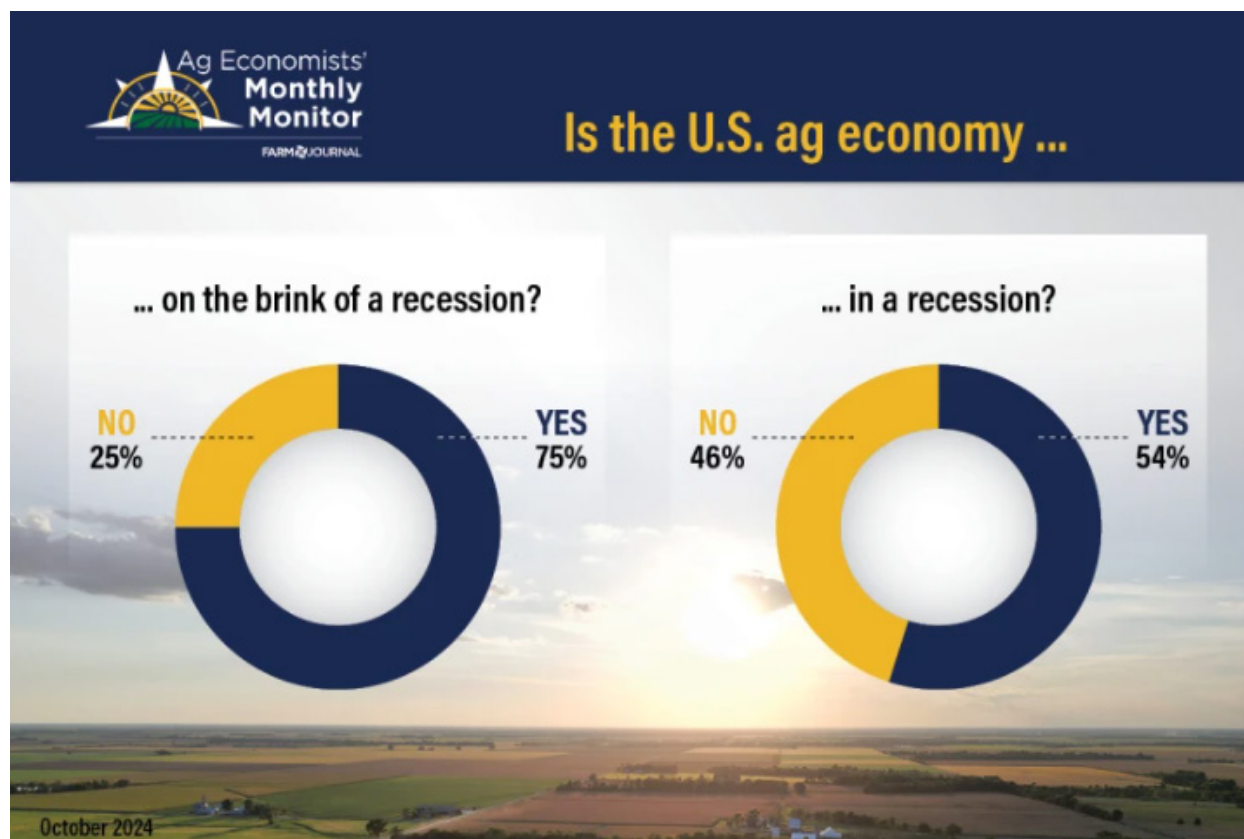
Rain and Hail

A Chubb Company

This institution is an equal opportunity provider and employer.



slight rise in optimism compared to the previous month, but economists remain worried about the current state of the agricultural economy when compared to last year.”



Courtesy of Ag Economists' Monthly Monitor from Farm Journal.

The 75% of economists who say the agriculture economy is on the brink of recession “is up from the 56% who responded that way in the previous month’s survey,” [Morgan reported](#). “...When asked if the economy was on the brink of a recession, 25% of economists responded with ‘no.’ It’s clear not all economists are in agreement, but when asked to expand on why, economists said:

- “Financial health is weaker but still pretty strong.”
- “For select crops and regions of the country farmers are facing significant financial pressure.”
- “The cost-price squeeze facing the crop sector is severe and will have larger implications if it persists. Many crop producers were profitable in 2021 and especially 2022, so they had some ability to absorb a more challenging environment over the last two years. But that ability is running out, especially for producers who rent much of the land they operate or who are heavily indebted.”
- “Over-production globally and exports are soft, while biofuel policy does not support consumption of surplus.”
- **“The farm structures across all farms does not suggest a recession. A higher portion of farms have off-farm income to support cyclical changes. Most farms have healthy balance sheets (thanks to increased land values), and there are positive returns in certain sectors of the industry supporting those that are diversified. Areas of the ag economy that will struggle are those that are highly or fully concentrated in row crops, are full-time commercial operations between 1,000 and 2,000 acres, and have a high proportion of cash-rented acres.”**
- “Highly-leveraged producers are feeling economic pain already. If supplies continue to remain large, lower prices may last for a longer period of time and could result in highly-

leveraged producers leaving the industry.”

- “The livestock sector, specifically cattle and dairy, is performing well relative to hogs and the crop sector.”

Purdue University’s Michael Langemeier, one of the economists who said the ag economy is in a recession, said that **“I define a recession as this is one of the worst years we’ve seen in the last 20. So my short answer to the question is yes. Just looking at where the price is currently at, this is about the worst year since 2007, which was the start of the ethanol boom,”** Morgan reported.

Farmers Down on Ag Economy, Too

In addition to the agriculture economists, [AgriNews’ Erica Quinlan reported at the end of last week](#) that “farmer sentiment about the ag economy reached its lowest levels since 2016, according to the Purdue University/CME Group Ag Economy Barometer.”

“The continued drop in the barometer reflects deepening concerns among farmers regarding expectations for farm income in 2024 and 2025,” said James Mintert, the barometer’s principal investigator,” Quinlan reported. “It’s notable that producer sentiment dropped back to levels last seen in 2016, when the U.S. farm economy was in the early stages of an economic downturn.”

My contact information:

Andrew Holden, Business Management Educator

Mobile (call or text): (716) 640-2656

Office: (716) 792-2800

Email: AZH6192@psu.edu



Andy Campell

General Manager

716-326-4671 • 7521 Prospect Rd • Westfield, NY 14787

www.westfieldagandturf.com

We Service What We Sell!





**FERTILEADER®
GOLD**

Worth its Weight

TimaCal

Designed to Increase
Calcium Uptake

Contact us:

Michael Intrieri: 716 421-1785

Kayla Heineman: 718 714-8281

Laing-Gro Fertilizer: 716 992-3830

www.us.timacagro.com



TimaCal AGRO
USA



DRYSHOD®
WATERPROOF FOOTWEAR



ORIGINAL
LOWE

FELCO®
SWISS  MADE



CORONA®

SEASON AFTER SEASON

NORTH EAST FRUIT GROWERS
2297 KLOMP ROAD, NORTH EAST, PA 16428

814.725.3705

nefruitgrowers.com

nefruitgrowers@verizon.net

OPEN YEAR-ROUND MONDAY - FRIDAY 8AM - 5PM
OPEN SATURDAYS APRIL- NOVEMBER 8AM - NOON

**BULK FERTILIZER
BAGGED FERTILIZER
CHEMICALS
VINEYARD SUPPLIES
ORCHARD SUPPLIES
PRUNING SUPPLIES
GLOVES & BOOTS
POND PRODUCTS
PRODUCE PACKAGING
HOME OWNER SUPPLIES
& SO MUCH MORE!**

Viticulture

Jennifer Russo, Viticulture Extension Specialist, LERGP

Every Autumn, our region enjoys the spectacular color changes that precede the loss of leaves on the grapevines in response to shorter days and colder temperatures. This past week has not disappointed in my opinion; the colors have been magnificent (See Photo 1 below). As we traverse through the fall, the grapevines begin to break down chlorophyll (green pigment in the leaves) to reveal the other pigments such as anthocyanins and carotenoids, which give the leaves their vibrant fall colors. The vines store carbohydrates in the roots and woody tissues to support next year's growth and this year's wood is lignifying and hardening off for the winter. Our grapevines are beginning acclimation for cold hardiness.



1. Photo of a Concord vineyard in senescence with fall colors

There are still a few of the red varieties such as Cabernet Sauvignon and Cabernet Franc still hanging on the vine in anticipation of schedules and quality standards, and some wineries are preparing ice-wine cultivars with netting. I have noticed some grape bins still traveling down the road headed to their final destination before processing and some growers have reached to talk about the upcoming pruning season. We have received some grower requests to hold a pruning workshop and we are working out a schedule to accommodate that request please check back for more information.

NYS Grape IPM

As a part of the third largest grape producing region in the nation, Cornell's New York State Grape Integrated Pest Management Coordinator position was created to support grape growers and sustain the region's grape industry by working collaboratively, across disciplines, and with a variety of stakeholders to develop, demonstrate and guide IPM implementation efforts. The search committee has selected four qualified candidates and we want you all to be a part of the process. We would like to welcome you to attend any of their presentations either in person at Cornell AgriTech in Geneva or via the Zoom link provided. Each candidate will give a seminar outlining their background, experience, and vision for the position. Dates and locations for each candidate's presentations are below. All will be from 9:30 – 10:30 AM.

Monday, October 28: Juliana Osse de Souza (Jordan Hall Room 210)

Wednesday, October 30: Kyle Bekelja (Room G34 Food Science Laboratory)

Monday, November 11: Johanna Elsensohn (Jordan Hall Room 210)

Thursday, November 14: Gabriel Torres Londono (Barton Hall Room A134)

Zoom link is the same for all of the seminars: <https://cornell.zoom.us/j/6670400203?pwd=bzFY2Y1WUVVV296OG5PMEZCRnhvZz09>

I hope that some of you are able to participate in one or more of these presentations. If you have any questions that you may like me to submit for the candidates or feedback about the candidates after their talks, I would be happy to hear from you. Please submit your questions to jjr268@cornell.edu.

Upcoming Programing News from LERGP

We are pleased to announce that we will be holding our 2025 Spray Preparation Program on December 3, 2024, from 9AM -12 PM. This program will be similar to previous years with Penn State University's Bryan Hed will be discussing current research on spray programs and presenting options for next year's growing season for vinifera, juice grapes, and organic systems. It is our hope that growers will be able to make informed decisions based off of research when purchasing next year's spray products. Penn State University's Megan Luke will also present on the EPA's Endangered Species Act regulation changes for pesticide management and her sprayer calibration work and the importance of regular calibrations. We also will have a presentation by Dave Combs, a research support specialist in Dr. Katie Gold's Grape Pathology Laboratory at Cornell AgriTech, who will share his take on what grape disease management will look like in a post-broad-spectrum world. We are currently applying for pesticide recertification credits for this program which should contain the elusive CORE credits. Please stay tuned for more information and Save the Date!

[Register Now!](#)

[Purchase 30 second sponsor video spots](#)

*Registration Open for
this event!*

If you have any questions or issues with registration or sponsorship, please contact Kate Robinson at kjr45@cornell.edu



LARRY ROMANCE & SON, INC.

Parts - Sales - Service

Come see us for all your Vineyard - Dairy - Construction & Consumers Needs

SHERIDAN, NY • 2769 ROUTE 20
(716) 679-3366 • tractorsales@netsync.net

ARCADE, NY • 543 W. MAIN ST.
(585) 492-3810

www.larryromanceandson.com



**SHIELD YOUR
GRAPES**
FROM POWDERY MILDEW WITH

Torino
FUNGICIDE
THE ONLY GROUP U6 FUNGICIDE

METTLE
125 ME
FUNGICIDE
HIGHLY SYSTEMIC GROUP 3 FUNGICIDE

QUINTEC
FUNGICIDE
THE ONLY GROUP 13 FUNGICIDE

GOWANCO.COM | **Gowan**
USA

Mettle® is a registered trademark of Gowan Company L.L.C. Torino® is a registered trademark of Nippon Soda Company, Ltd.
Quintec® is a registered trademark of Nissan Chemical Corporation. Always read and follow label directions.

PA Update

Megan Luke, Penn State Extension Viticulture and Tree Fruit Educator

PA Update

Grape leaf hopper: Grape leaf hopper was reported as a severe pest at harvest this year in PA vineyards, especially on the escarpment. (Figure 1). High levels of grape leaf hopper can reduce the vine's ability to ripen fruit due to feeding damage, and several growers with high per acre tonnage in concord saw lower brix than anticipated where grape leaf hopper infestations were heavy.

The final round of scouting is typically performed in late August. If you see stippling (white dots on leaves caused by leafhopper feeding) throughout the vineyard block, you should be counting nymphs to determine if an insecticide treatment is recommended (Figure 2). Sampling for leafhoppers at this point in the season is focused on the abundance or quantity of second-generation nymphs. Check four different areas in the vineyard (two exterior and two interior). At each location, look at five lower (basal) leaves (leaves #3-#7 when counting from the base of the shoot) per shoot on five different shoot locations and check for leaf feeding. If no damage or minimal injury is observed, proceed to the next sampling site. If moderate to heavy leaf stippling is observed, then begin counting nymphs (Figure 3) on the undersides of leaves. **If you observe heavy damage and a threshold of ten nymphs/leaf is reached, then an insecticide application is recommended.**

Due to the movement of the pest throughout the landscape and its high level of mobility, contact insecticides like zeta-cypermethrin (Mustang Maxx®, Cortez®) have limited effectiveness as they only remain effective against the pest for one to two days. A longer-lasting insecticide or combined chemistry product (Leverage 360®, etc.) may be a better choice IF the 3-day PHI is acceptable AND you have not used all your potential applications earlier in the season.

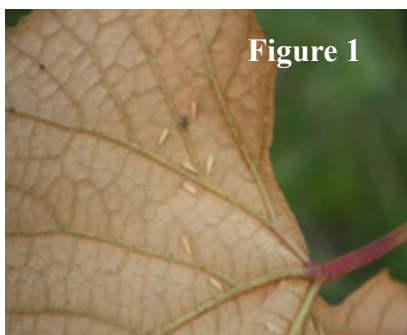


Figure 1



Figure 2

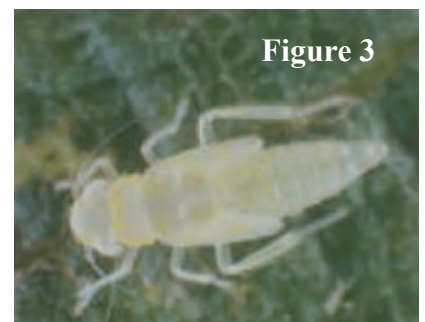


Figure 3

Grape leaf hopper adults, leaf damage, and nymph *Photos courtesy of Penn State Extension, Andy Muza*

Aprovia (Benzovindiflupyr)

The active ingredient in Aprovia® and Aprovia Top® (Syngenta), benzovindiflupyr, is in the beginning stages of review by the EPA. You can access the open comment period regarding the methods for environmental assessment until November 25th.

While this pesticide is in the early review process, it has been identified as a high risk to many endangered species and their critical habitat. We will follow up on this docket and update the information as needed.

EPA Herbicide AND Insecticide Strategy Update

The EPA has released its final decision regarding herbicide use mitigation measures and changes to the re-registration and labeling process. In addition, the EPA has recently released a similar report for ALL insecticide registrations and registration reviews that are similar in scope and execution to the herbicide strategy. While the EPA has backtracked on some of the more complicated aspects of these new policies, several significant changes will remain, specifically the requirement to check the Bulletins Live! 2 website before all herbicide and insecticide applications (when required by the label) and the requirement to include documented mitigation strategies when applying herbicides within a Pesticide Use Limitation Area (PULA) i. e. critical habitat for one or more endangered species.

A new toolbox with information, webinars, guides, and calculators for meeting these new pesticide use requirements has been developed and released. Remember: these changes are occurring on a Federal level, and ALL growers are subject to these new use requirements.

The toolbox can be found here: [EPA Toolbox for Endangered Species Act, Bulletins Live, and the Mitigation Library and Calculator](#)

These changes to pesticide use requirements are a drastic change from our standard practices and require additional record keeping and research before every pesticide application. I will provide more information on these requirements at the upcoming Spray Program Webinar and at our annual conference in Fredonia, NY.

Herbicide strategy can be found here*: <https://www.regulations.gov/docket/EPA-HQ-OPP-2023-0365>

Insecticide strategy can be found here*: <https://www.regulations.gov/docket/EPA-HQ-OPP-2024-0299>

*Both dockets require downloading the strategy overview with an appropriate PDF viewer.

EPA's Bulletin Live! 2 Website can be found here: <https://www.epa.gov/endangered-species/bulletins-live-two-view-bulletins>

Contact information:

Mobile (call or text): (716) 397-9674
(preferred)

Office: (814) 825-0900

Email: MFL5873@psu.edu

**YOU'RE GREAT AT FARMING.
WE'RE GREAT AT INSURANCE.**



27 E MAIN STREET
WESTFIELD, NY

716 269 4322



Now in our 40th year, we have a tradition of providing quality products, education and superior service to both farm and home growers. Our products and spray programs are tried and tested in our own vineyards, ensuring you have a solid program for your own vineyard. We deliver products, programs and services to our customers in an efficient and personal way to enhance their growth and profit opportunities for the long term.

We are a proud dealer for -



PRODUCTS & SERVICES

- ☑ Herbicides, Fungicides & Insecticides
- ☑ Bulk & Bagged Fertilizer
- ☑ Soil and Petiole Testing
- ☑ Customized Pesticide and Fertilizer Programs
- ☑ Infaco, Felco and Bahco Shear and Lopper Repair
- ☑ Supplies for Trellis, Pruning, Tying and so much more!



Call us
716-679-1240



Visit our website
www.militellofarmsupply.com



Our location
2929 Route 39, Forestville

Updates and Information

Kimberly Knappenberger, Extension Support Specialist, LERGP

NEWA

Great news! We have added another to our fleet of weather stations in the Lake Erie region. We now currently have 31 stations along Lake Erie and up toward Lake Ontario. This number includes 2 NYS Mesonet stations as well as a couple of privately owned stations that can be accessed on NEWA. We have also helped support the Finger Lakes Region by adding stations in Williamson, Ovid, Hector and Hammondsport to either replace very old stations or increase their NEWA availability.

Our new station will be available soon on www.newa.cornell.edu as Sheridan (Liberty) NY. We thank Gary and Pam for being our newest hosts. This station is an Onset HOBO station that is more streamlined than our others and we are looking forward to collecting data in another site to benefit those around it.



CROP GROWERS
Your first choice for crop insurance.

PROTECT YOUR CROP and your farm's bottom line.



Unpredictable weather like late frosts or summer hail storms can damage fruit crops. This can leave you with a total crop loss or damaged fruit you can't market.

Our Crop Growers specialists understand local weather and work with producers to develop a risk management plan that not only aligns with their risk tolerance but helps them meet their financial goals. When Mother Nature leaves a chilling effect across your region, we will make sure you're still standing after the thaw.

Our goal is to protect your investment.

**Find out why we're the first
choice for crop insurance.**

800.234.7012 | CropGrowers.com

CROP GROWERS IS AN EQUAL OPPORTUNITY PROVIDER



Own Rooted & Grafted Certified Grapevines

Berries, Hops, Wine Making, Vineyard
Supplies & More

www.doubleavineyards.com

10317 Christy Rd
Fredonia, NY 14063
716-672-8493

**Chautauqua County Farm Bureau®
is working hard to gain workforce
options, retain necessary
protectants, and ensure policy
that benefits our growers**



Join Today!
NYFB.org 800-342-4143

Links of Interest:

Cornell Cooperative Extension:

<https://cals.cornell.edu/cornell-cooperative-extension>

Efficient Vineyard:

<https://www.efficientvineyard.com/>

LERGP:

<https://lergp.cce.cornell.edu/>

<https://lergp.com/>

NYSIPM:

<https://cals.cornell.edu/new-york-state-integrated-pest-management>

Veraison to Harvest:

<https://cals.cornell.edu/viticulture-enology/research-extension/veraison-harvest>

