



*Photo credit-
Jennifer Phillips Russo*

LERGP Crop Update October 10, 2024

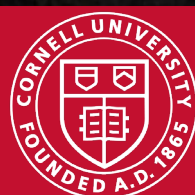


Cornell Cooperative Extension
Lake Erie Regional Grape Program



PennState Extension

Building Strong and Vibrant New York Communities
Diversity and Inclusion are a part of Cornell University's heritage. We are a recognized employer and educator valuing AA/EEO, Protected Veterans, and Individuals with Disabilities.



In this copy:

Reserve your LERGP 2025 Planning Calendar now! See options on [page 4](#)

New Grants Available for Lake Erie Grape Growers, Wineries, and Processors -Andrew Holden- [page 5](#)

Hurricane Milton To Disrupt Phosphate Production-[source- page 9](#)

In the Vineyard(s)-Jennifer Phillips Russo- [page 12](#)

Mancozeb, Ziram, Herbicide and Pesticide Strategy Updates- Megan Luke- [page 15](#)

NEWA,VIP -Kim Knappenberger- [page 18](#)

Jennifer Phillips Russo - LERGP Viticulture Specialist:

jjr268@cornell.edu

Cell: (716) 640-5350

Megan Luke –LERGP Penn State Extension Viticulture and Tree Fruit Educator

MFL5873@psu.edu

Cell:(716) 397-9674 Office:(814) 825-0900

Andrew Holden-LERGP Penn State Extension Business Management Educator

azh6192@psu.edu

716-792-2800 ext 202

Cell: 716-640-2656

Kim Knappenberger – Extension Support Specialist

ksk76@cornell.edu

716-792-2800 ext 209

Kate Robinson – Administrative Assistant

kjr45@cornell.edu

716-792-2800 ext 201



[Click here to
watch Podcasts](#)

The Lake Erie Regional Grape Program is a Cornell Cooperative Extension partnership between Cornell University and the Cornell Cooperative Extensions in Chautauqua, Erie and Niagara county NY and in Erie County PA.



Farmers | Farm Families | Agribusiness

- Financial analysis
- Personal well-being
- Mental Health & Stress
- Retirement and estate planning
- Family business relationships
- Communication
- Business planning



100% free, 100% confidential
Call 1-800-547-3276

Cornell CALS
College of Agriculture and Life Sciences

Dyson
Cornell
SC Johnson College of Business



2024 CLUB CAR

XRT 1550 4X4 UTILITY VEHICLE

STARTING AT
\$15,551

- ✓ 4X4
- ✓ AVAILABLE IN KAWASAKI 4-CYCLE ENGINE OR KUBOTA D722 DIESEL ENGINE
- ✓ INDEPENDENT DOUBLE A-ARMS WITH COIL-OVER SHOCK
- ✓ SEMI-INDEPENDENT, 4-LINK SOLID AXLE
- ✓ ONLY 58.5 INCHES WIDE, PERFECT TO FIT IN THOSE TOUGH PLACES
- ✓ POWER TILT BED
- ✓ COMES IN A CREW MODEL



FIND OUT MORE AT

DAVE WARREN POWERSPORTS IN WESTFIELD, NY

7540 US-20, WESTFIELD, NY 14787 | (716) 232-3030

WWW.DAVEWARRENMOTORS.COM

2025 LERGP Calendar: PLEASE READ and RESPOND

We are in the process of putting our 2025 LERGP Planning Calendar together, with updates and new content. We have provided our growers with this useful resource for 4 years now, and hope that you have found it beneficial to your operation.

However, the cost of mailing it has increased significantly, and we can no longer ship the calendar to everyone. We are addressing this by offering 2 options.

Option #1- Reserve your copy of the calendar by contacting me and then picking it up at the CLEREL office or the North East Lab when they are ready.

You must contact me by **Friday, December 6th, 2024.**

Kjr45@cornell.edu

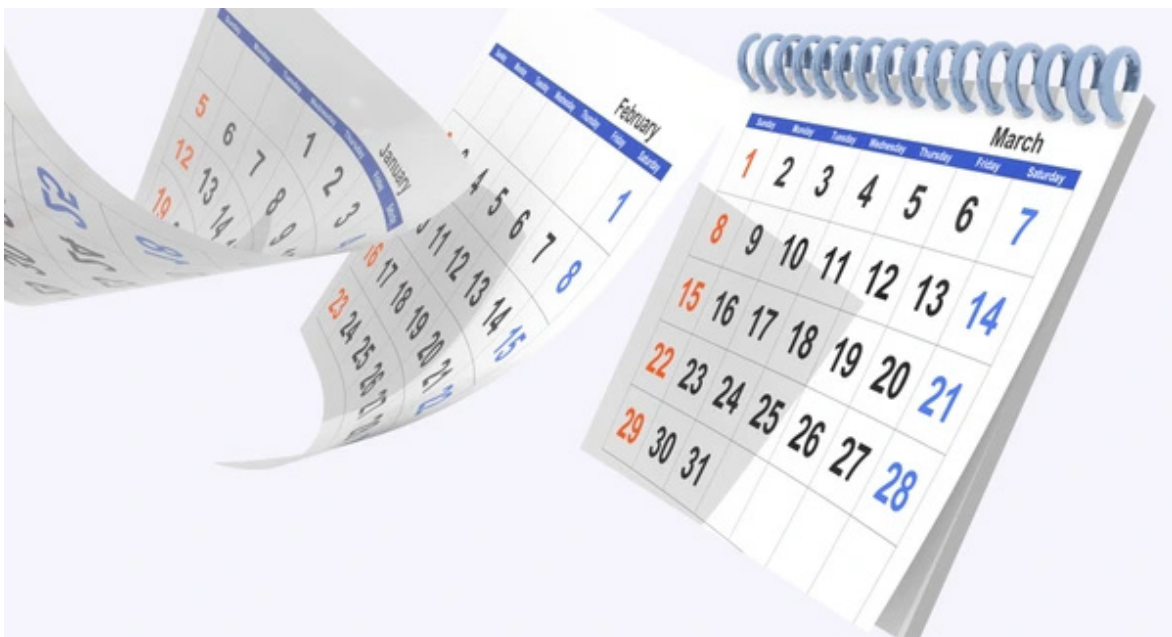
716-792-2800 ext 201

Option #2- Reserve your copy with shipping to your home by sending a check for \$7.00 to **LERGP, 6592 W Main Rd. Portland, NY 14769**

The LERGP Planning calendar is a unique useful tool to guide you through the year, with reminders about viticulture and vineyard tasks, IPM scouting and spray timing and business deadlines. We hope that you choose to either have your copy mailed or stop by and see us to pick it up.

I look forward to hearing from you!

Katie



Business Management

Andrew Holden, Business Management Educator, Penn State University, LERGP

New Grants Available for Lake Erie Grape Growers, Wineries, and Processors

There are two grants that growers, processors, wineries, and others in the grape industry may be able to take advantage of in both Pennsylvania and in New York. The Pennsylvania grant is currently open and is due November 15th. The New York grant is not yet open, but preparations should be made now to be competitive. Please read more about each respective grant below and contact me with any questions about either program.

Pennsylvania - The Agricultural Innovation Grant (NOW OPEN)

The Agricultural Innovation Grant should be available to growers, processors, and other entities involved in agriculture in the state.

About

Grants will reimburse expenses for project planning, on-site project implementation, and larger grants for projects that have a regional impact.

Project examples include technology that:

- improves efficiency on the farm or in processing,
- generates energy while reducing nutrient waste leaving the farm,
- supports crops that effectively store carbon or replace non-renewable resources.

Eligibility

- A person who grows an agricultural commodity and who has anticipated sales greater than \$2,000 per year.
- A person who processes an agricultural commodity and has anticipated sales greater than \$10,000 per year.
- A person who provides technical assistance or services to farmers for conservation, engineering, veterinary care, animal disease management, farm management, agricultural commodity production, nutrient management, or similar services.
- A person or cooperative association that utilizes agricultural commodities to create products or energy.

Eligible Projects

A person or cooperative association who utilizes innovation:

- to improve energy efficiency, improve water quality, reduce water consumption, reduce odors, or address solid waste concerns.
- to improve production, processing, commercialization, or utilization of agricultural commodities.
- technology that assists eligible applicants with the management of their farms, including diagnostic tools and services.
- technology that assists a packer, processor or cooperative in more efficient sorting, grading, or processing of agricultural commodities.
- that supports cybersecurity or data analytics.

- *See website for more*

Funding Opportunities- Program grants should be reimbursement grants. The following can apply:

Innovation planning project grant

An eligible applicant may apply for a grant to develop a strategic plan to utilize innovation to improve agricultural practices, technologies, operations or approaches within a specific business, geographic area, or network. The following shall apply to a grant under this subsection:

- The amount of a grant should be no less than \$7,500 and no more than \$50,000.
- A grantee must use non-State sourced matching funds equal to at least 30% of the grant amount for the project.

Onsite project grant

An eligible applicant may apply for a grant for a project that focuses on implementing innovation practices, technologies or approaches on an individual farm or property producing or processing an agricultural commodity. The following shall apply to a grant under this subsection:

- The amount of the grant should be no less than \$5,000 and no more than \$200,000.
- A grantee must use non-State sourced matching funds equal to at least 50% of the grant amount for the project.

Regional impact project grant

An eligible applicant may apply for a grant for a project designed to address challenges, promote efficiencies, or achieve specific goals for multiple eligible applicants. The following shall apply to a grant under this subsection:

- The amount of the grant should be no less than \$100,000 and no more than \$2 million.
- The grantee must use non-State sourced matching funds equal to at least 50% of the grant amount for the project.
- The project must impact two or more persons or businesses or be a cooperative association that grows, harvests, processes, packs or manages an agricultural commodity.

Application Requirements

An application for the grant should contain the following information:

- The applicant's name, business address and contact information.
- A statement as to whether the applicant seeks an innovation planning project grant, onsite project grant or regional impact project grant.
- The details of the project for which reimbursement grant money is sought, including the following:
 - A project narrative, including a statement of the maximum amount of grant money sought for the project.
 - A project budget.
 - An addendum that will cover:
 - Alignment with the intent of the Program.
 - Metrics for tracking success.
 - An itemized budget.
 - Letters of support.

Application Timeline

Applications must be submitted through the [Single Application for Assistance online application system](#) **before 11:59 p.m. on November 15, 2024**. Applications received outside of that application window will not be considered or reviewed. [Click here for more information](#)



New York - Grown & Certified Infrastructure, Technology, Research and Development Grant Program (NOT YET OPEN)

The New York Farm Viability Institute and NYS Grown & Certified are planning to offer a grant for the agricultural industry. The grant will be for infrastructure and technology projects as well as research and development. The RPF and grant timeline has not been announced yet, but those interested are encouraged to start preparing now.

Grant applications will be more competitive if the applicant is already enrolled or actively in the process of becoming part of the NYS Grown & Certified program. That is why we are encouraging all potential applicants to look **NOW** at the [NYS Grown & Certified program](#) and determine if it is a good fit for their business. Participation in the Grown & Certified program is free and the requirements are straightforward. To qualify, businesses must meet certification criteria:

For Concord growers, this will mean to get in the NYS Grown & Certified Program:

- **NY Requirement:** 100% Grown in NY
- **Environmental: Every three years,** farms are required to participate/renew in the Agricultural Environmental Management (AEM) program, administered by their county Soil and Water Conservation district, with the completion of Tier 2 of the program (or higher). Grape growers may substitute the Vine Balance Program OR the NY Sustainable Winegrowing for AEM. Renewals must be submitted to the Department.

Here are some more details about the grant to be offered:

- Nearly \$6 million will be available
- Grants will be available for infrastructure and technology projects as well as research and development

- Many capital costs will be allowed
- Grant sizes will range from \$20,000 to \$250,000 for infrastructure and technology projects, and \$10,000 to \$50,000 for product research and development projects
- A 10% match (cash, grant, loan) will be required for all projects.
- To be considered, all projects must have a direct and timely benefit to the New York agricultural industry and significance to the region served by the eligible applicant.
 - Specific priorities for projects include:
 - Distribution capacity enhancement
 - Environmental sustainability related to NYS Grown & Certified participation
 - Food Safety
 - New Product Development
 - Processing and Packing
 - Production automation and labor efficiency

For our industry, I can see many of the above priorities applied to potential projects for growers, processors, and wineries. Growers specifically may be able to use the grant to fund automation of production in their equipment.

This grant was offered last year and was made available in July, but no word yet on when the application window will open in 2025.

[Sign up here to be notified when more information is available.](#)

[Click here for more information](#)

My contact information:

Andrew Holden, Business Management Educator
 Mobile (call or text): (716) 640-2656
 Office: (716) 792-2800
 Email: AZH6192@psu.edu



**FERTILEADER®
GOLD**

Worth its Weight

TimaCal

Designed to Increase
Calcium Uptake

Contact us:
 Michael Intrieri: 716 421-1785
 Kayla Heineman: 718 714-8281
 Laing-Gro Fertilizer: 716 992-3830

www.us.timacagro.com

 Timac AGRO
USA

Hurricane Milton To Disrupt Phosphate Production

Source: https://farmpolicynews.illinois.edu/2024/10/hurricane-milton-to-disrupt-phosphate-production/?utm_source=newsletter&utm_medium=email&utm_term=Thu+Oct+10+2024&utm_campaign=Hurricane+Milton+To+Disrupt+Phosphate+Production

Argus Media's Taylor Zavala reported that **"the US phosphate market anticipates Hurricane Milton's Florida landfall ... will cause further disruptions to regional production as the Tampa area continues to recover from Hurricane Helene."**

Bloomberg's Mary Hui and Brian K Sullivan reported Thursday morning that "Hurricane Milton is moving off the coast of eastern Florida into the Atlantic after making landfall near Tampa with tree-snapping winds and heavy rain, causing widespread flooding and knocking out power for millions."

"Milton came ashore near Siesta Key as a Category 3 hurricane on Wednesday evening and is now packing winds of 85 miles (140 kilometers) per hour, the US National Hurricane Center said in its latest advisory. Damaging winds are lashing central Florida and flash flood emergencies are in effect, as Milton tracks over the Atlantic ocean," Hui and Sullivan reported. "The hurricane shredded the roof of Tropicana Field, a domed stadium in St. Petersburg and the home of Major League Baseball team, Tampa Bay Rays, ABC reported. The storm has also knocked out power for more than 3 million homes and businesses in Florida, according to PowerOutage.us."

"Phosphate traders expect the storm will only further tighten the market as major fertilizer producers work to overcome production losses and power outages endured during Hurricane Helene on 26 September," Zavala reported. "One phosphate trader called the incoming storm 'devastating,' considering it will exacerbate existing fourth quarter scarcity from ongoing outages at Nutrien's White Springs and Mosaic's Riverview facilities."

Phosphate fertilizer processing plant in Nichols, Florida, just outside of Tampa. Courtesy Harvey Henkelmann.

"Mosaic's Riverview facility in Tampa experienced water intrusion from storm surge during Hurricane Helene but was expected to be back to full production sometime this week, according to the company. The producer also expected some late third quarter shipments to be pushed into the fourth quarter because of the Tampa port closure," Zavala reported. "Fellow fertilizer producer Nutrien's White Springs phosphate facility is located north of Tampa and was still assessing damage following Hurricane Helene as of today, the company said. White Springs has annual production capacity of 2mn t/year. Nutrien said it is also monitoring Hurricane Milton's path and has emergency safety measures in place for the storm."

While disruptions to the plants themselves will likely be problematic, Progressive Farmer's Russ Quinn reported that **"even if the phosphorus production facilities can withstand the storm, workers have homes and families to care for. 'How much can homesteads withstand and how long will it take for them to clean up and get back on their feet before they can even consider getting back to work?' (Josh) Linville, (Stone X vice president of fertilizer), asked."**

"This situation would be bad anytime of the year, but it is especially bad about 30 days before the start of fall application season, he stressed," Quinn reported. "NOLA DAP is already one of the least expensive DAP values in the world with demand looking better with higher yields and somewhat higher grain prices giving farmers some optimism. Many farmers will apply phosphorus in the days

after harvest is completed this fall.”

“So, supplies could be hurt, and demand is rising three to four weeks before the start of application,’ Linville wrote,” according to Quinn’s reporting.

Concerns Growing Over Production Waste Facilities

E&E News’ Marc Heller reported Tuesday that “the approach of Hurricane Milton is rekindling worries that Florida’s piles of waste from the fertilizer industry could be breached by the incoming storm.”

“Florida has more than two dozen facilities for storing phosphorus waste, several of which are in the Tampa region and have sparked conflict with environmental groups. So far, the so-called gypsum stacks have dodged damage from hurricanes, including most recently Helene,” Heller reported. “Most of the 24 phosphogypsum stacks in Florida are in central Florida, smack dab in the cone of uncertainty at the moment. That’s very concerning,’ said Justin Tramble, executive director of Tampa Bay Waterkeeper, an environmental group.”



Phosphate fertilizer processing plant in Nichols, Florida, just outside of Tampa. Courtesy Harvey Henkelmann.

“The stacks, which can be 500 feet tall and are typically covered with ponds of wastewater, contain mildly radioactive chemicals,” Heller reported. “They’re regulated by EPA as well as state environmental agencies, through provisions first written in the 1980s.”

KEEP YOUR FARMING OPERATION FINANCIALLY HEALTHY

Crop insurance offers a lot of choices. Which protection is right for your business?

Contact your local Rain and Hail agent to get your crop insurance consultation before it is too late.

Sales closing date is November 20!

For details contact:

GEORGE HAFFENDEN

716.725.7840

ghaffenden@american-national.com

Rain and Hail

A Chubb Company

This institution is an equal opportunity provider and employer.



**YOU'RE GREAT AT FARMING.
WE'RE GREAT AT INSURANCE.**



27 E MAIN STREET

WESTFIELD, NY

716 269 4322



NORTH EAST FRUIT GROWERS
2297 KLOMP ROAD, NORTH EAST, PA 16428

814.725.3705

nefruitgrowers.com

nefruitgrowers@verizon.net

OPEN YEAR-ROUND MONDAY - FRIDAY 8AM - 5PM
OPEN SATURDAYS APRIL- NOVEMBER 8AM - NOON

**BULK FERTILIZER
BAGGED FERTILIZER
CHEMICALS
VINEYARD SUPPLIES
ORCHARD SUPPLIES
PRUNING SUPPLIES
GLOVES & BOOTS
POND PRODUCTS
PRODUCE PACKAGING
HOME OWNER SUPPLIES
& SO MUCH MORE!**

DRYSHOD
WATERPROOF FOOTWEAR



ORIGINAL
LOWE

FELCO
SWISS  MADE



CORONA

SEASON AFTER SEASON

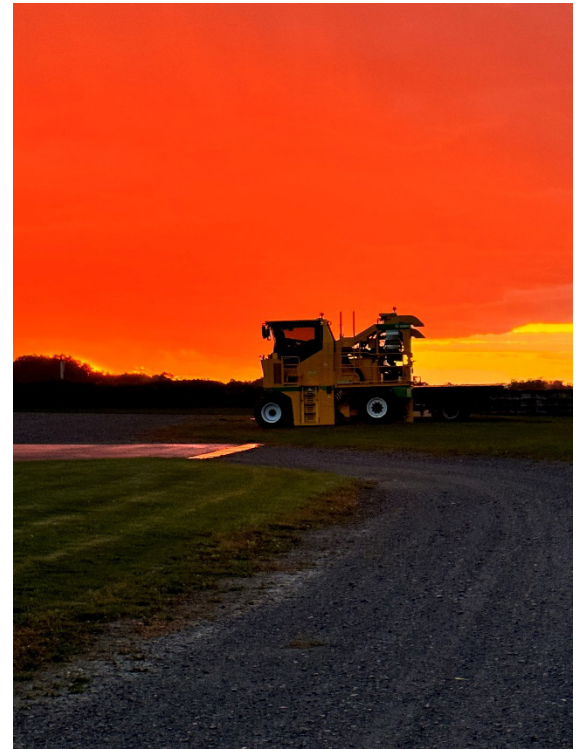
Viticulture

Jennifer Russo, Viticulture Extension Specialist, LERGP

In the Vineyard

This has been quite the season thus far. In the past couple of years, we continued to harvest Concords into the first few weeks of November. Many of our growers have concluded their Concord harvest and one juice processor reports that they will be finishing up with harvest this weekend. Here at the Cornell Lake Erie Research and Extension Laboratory, we concluded our harvest last week. Please see Photo 1 below of the beautiful sunset over our harvester to finish our season. Another processor reported that they are getting towards the end of harvest. The last few blocks of Concord are being picked this week and into the first part of next. This season's crop is beautiful and very ripe both in Lake Erie and the Finger Lakes. The canopies around the belt are still in good shape and the wood for next year looks terrific. Gallo winery reported that they will start Catawba next week and run for a few days and once they are over, then Gallo will be finished for the season.

I do have a couple of wineries that still have Riesling and reds hanging on the vine, but reports are that they will be coming off soon.



1. Sunset at the Cornell Lake Erie Research and Extension Laboratory as a fitting end to our harvest season

This week was our seventh week of collection for Veraison to Harvest. We started off collecting twelve different cultivars and are now down to three remaining on the vine as of Monday, October 7, 2024. Table 1 below has the data collected for the Cabernet Sauvignon, Lemberger, and Cabernet Franc with last week's and this week's information.

Table 1. The Lake Erie Grape Region Veraison to Harvest data for the remaining cultivars in week 7.

	10/6/2024	9/30/2024	10/6/2024	9/30/2024	10/6/2024	9/30/2024	10/6/2024	9/30/2024	10/6/2024	9/23/2024
Variety	Berry Weight	Berry Weight	Brix	Brix	pH	pH	TA	TA	YAN	YAN
Riesling	HARVESTED	184.4	ARVESTED	17.9	ARVESTED	3.21	ARVESTED	7.7	ARVESTED	105
Cabernet Sauvignon	166.1	162.0	20.8	20.2	3.35	3.30	7.6	7.8	129	139
Lemberger	239.8	237.3	19.4	19.5	3.42	3.43	8.5	7.2	165	227
Cabernet Franc	151.8	152.1	23.8	22.5	3.46	3.47	6.3	5.9	84	80

In other news, the Lake Erie Regional Grape Program has had a very busy week. Last week Megan Luke and Jennifer Phillips Russo traveled to Southeast PA to be involved with a tour of Spotted Lanternfly infested farms for the National Grape Research Alliance Board of Directors

and other regulatory agencies. This trip was two-fold, the tour and round table discussions were invaluable to bring together industry concerns, regulatory agencies, and researchers to discuss how we can move forward and work together to help our industry. We also were on a team of researchers that conducted pilot information on how Spotted Lanternfly behaves during mechanical harvest. This data collected is crucial for helping to fill gaps in knowledge. The results are being communicated nationally and we have additional meetings to discuss where we need to go from here. As soon as we have a paper to release to everyone, I will certainly do so. Megan and I are extremely proud to be on this team and hopeful for what this data will do for more research for our region.

Also, back in August the LERGP and CLEREL staff were involved with a tour to collaborate and learn from NASA. NASA leadership joined us in Geneva and then at the Cornell Lake Erie Research and Extension Laboratory for the Space for Ag Tour' to have conversations with growers, stakeholders, and researchers about their needs and challenges. One of the organizations on this tour was grape.ag. They are a data driven agriculture company that envisions a world of next-era sustainability where agriculture knowledge is powered by innovative hardware, unique data, and artificial intelligence. We had conversations about my and Dr. Jason Londo's micro-climate work and they took much interest in that. After discussions of collaboration, and less than one month later, this organization visited our region and installed some of their weather stations and micro-sensors in two of our grower's Concord vineyards. The goal of this collaboration is to install their micro weather monitoring sensors throughout our fields to provide valuable atmospheric and soil information. Their software allows us to visualize hyper-local conditions in real-time, find trends, and make better decisions. This collaboration enhances our recent work and we are trialing it in our region. Stay tuned for more information on this collaboration. The weather and I apparently have an agreement for photo opportunities, because a rainbow appeared after we installed one of the weather stations and gateways in the rain (Photo 2. Below).



The goal of this visit is to have two-way dialogue with end users, stakeholders, and researchers to improve NASA Earth Science's research portfolio in specialty crop agriculture and viticulture while fostering a broader conversation about effective research translation into practice. This visit and listening tour are supported by Cornell AgriTech and the Cornell Institute for Digital Agriculture.

2. Photo of one of grape.ag's weather stations and gateways installed near a Concord vineyard.



LARRY ROMANCE & SON, INC.

Parts - Sales - Service

Come see us for all your Vineyard - Dairy - Construction & Consumers Needs

SHERIDAN, NY • 2769 ROUTE 20
(716) 679-3366 • tractorsales@netsync.net

ARCADE, NY • 543 W. MAIN ST.
(585) 492-3810

www.larryromanceandson.com



**SHIELD YOUR
GRAPES**
FROM POWDERY MILDEW WITH

Torino
FUNGICIDE
THE ONLY GROUP U6 FUNGICIDE

METTLE
125 ME
FUNGICIDE
HIGHLY SYSTEMIC GROUP 3 FUNGICIDE

QUINTEC
FUNGICIDE
THE ONLY GROUP 13 FUNGICIDE

GOWANCO.COM | **Gowan**
USA

Mettle® is a registered trademark of Gowan Company L.L.C. Torino® is a registered trademark of Nippon Soda Company, Ltd.
Quintec® is a registered trademark of Nissan Chemical Corporation. Always read and follow label directions.

PA Update

Megan Luke, Penn State Extension Viticulture and Tree Fruit Educator

PA Update

Alert: The comment period regarding label changes to mancozeb is open, and comments are due by October 16th. This is due to industry feedback, which demonstrates the power of your collective input on these issues!

Mancozeb

Mancozeb is in the final stages of the pesticide review process and has a docket number. Currently, all applications in grapes are being removed from the label, and registration of this chemistry will be canceled ONLY for grape production and seed applications in other cropping seasons.

You can read comments that have already been posted [here](#)

Comment on changes to the mancozeb label: [here](#)*

**You can post anonymously if you want to make a statement but are uncomfortable with using your name/business.*

Ziram

There have been no changes to the ziram docket as of today. This means that ziram will still be legal to use in vineyards for the 2025 growing season, given the 12-month grace period after the federal stamp on the registration. Since the stamp has not yet been issued, ziram can still be used for at least one year from the current date, which carries us through next year's harvest.

Aprovia (Benzovindiflupyr)

The active ingredient in Aprovia® and Aprovia Top® (Syngenta), benzovindiflupyr, is in the beginning stages of review by the EPA. There is an open comment period regarding the methods for environmental assessment until November 25th that you can access [here](#).

While this pesticide is in the early review process, it has been identified as a high risk to many endangered species and their critical habitat. We will follow up on this docket and update the information as needed.

EPA Herbicide AND Insecticide Strategy Update

The EPA has released its final decision regarding herbicide use mitigation measures and changes to the re-registration and labeling process. In addition- the EPA has recently released a similar for ALL insecticide registrations and registration reviews that is similar in scope and execution to the herbicide strategy. Comment period for this docket is currently closed but there have been many requests for the comment period to be re-opened for an additional 90 days.

While the EPA has backtracked on some of the more complicated aspects of these new policies,

several of the major changes will remain, specifically the requirement to check the Bulletins Live! 2 website before all herbicide and insecticide applications (when required by the label) and the requirement to include documented mitigation strategies when applying herbicides within a Pesticide Use Limitation Area (PULA) i. e. critical habitat for one or more endangered species.

Key takeaways:

- The EPA is working with the U.S. Fish and Wildlife Service to create maps of every endangered and protected species in the USA and their critical habitat. Currently, 8 total regions in the USA are designated as Pesticide Use Limitation Areas (PULAs), and this number and the ranges of these designated areas are subject to change.
- If your farming operation is within a PULA, you will be required to demonstrate compliance with “mitigation measures” as defined by the EPA
- Mitigation measures are outlined in a special bulletin on the EPA's Bulletins Live! 2 website and are required by law as an addendum to the pesticide label
 - Measures will include practices such as cover cropping, conservation tillage, drift reduction practices, contour farming, etc.
 - New buffer zone requirements will be implemented specific to PULA and the associated risk of the particular product in use
 - Determining buffer zone requirements can be challenging and technical
 - In some cases, specific measures **MUST** be employed and clearly described. In other cases, a farmer may demonstrate compliance by utilizing various methods specific to their operation **AND** recognized by the EPA as impactful.
- Every new herbicide and every herbicide due for re-registration will have a mitigation requirement added to the label
 - Herbicides and insecticides deemed higher risk may require more mitigation tactics to be in place at the time of use
 - Farmers **MUST** be able to demonstrate commensurate mitigation practices to the requirement on the label **OR** the Bulletins Live! 2 website (if located within a PULA) **IN ORDER TO USE THE HERBICIDE**
- All current information on PULAs and mitigation practices will be hosted **EXCLUSIVELY** on a website

Methods of enforcing these measures have not been widely discussed, and at this time, compliance will be checked as part of routine PDA or DEC inspections. A grant period recently closed which awarded funds to several government agencies to create methods for documenting compliance and implementation of required pesticide mitigation.

Herbicide strategy can be found here*: <https://www.regulations.gov/docket/EPA-HQ-OPP-2023-0365>

Insecticide strategy can be found here*: <https://www.regulations.gov/docket/EPA-HQ-OPP-2024-0299>

*Both dockets require downloading the strategy overview with an appropriate PDF viewer.

EPA's Bulletin Live! 2 Website can be found here: <https://www.epa.gov/endangered-species/bulletins-live-two-view-bulletins>

Contact information:

Mobile (*call or text*): (716) 397-9674 (*preferred*)

Office: (814) 825-0900

Email: MFL5873@psu.edu



Now in our 40th year, we have a tradition of providing quality products, education and superior service to both farm and home growers. Our products and spray programs are tried and tested in our own vineyards, ensuring you have a solid program for your own vineyard. We deliver products, programs and services to our customers in an efficient and personal way to enhance their growth and profit opportunities for the long term.

We are a proud dealer for -



PRODUCTS & SERVICES

- ☑ Herbicides, Fungicides & Insecticides
- ☑ Bulk & Bagged Fertilizer
- ☑ Soil and Petiole Testing
- ☑ Customized Pesticide and Fertilizer Programs
- ☑ Infaco, Felco and Bahco Shear and Lopper Repair
- ☑ Supplies for Trellis, Pruning, Tying and so much more!



Call us
716-679-1240



Visit our website
www.militellofarmsupply.com



Our location
2929 Route 39, Forestville

Updates and Information

Kimberly Knappenberger, Extension Support Specialist, LERGP

NEWA

We have purchased another two Onset HOBO stations this year to increase the data available to growers in our region. One of the stations will be placed in the vineyards near Liberty Winery and will be called Sheridan (Liberty). That should be up and available in the near future. The second station still needs a home. We can take a look at the map and see where there might be gaps of coverage, but it really comes down to finding the spot where it can benefit the most growers in addition to having a willing host for the station. That would include a site that is accessible to cellular data coverage as well as a host that is willing to cover the cost of the cell service after the first year. The cost for that service from Onset HOBO is currently \$300 per year.

We are currently looking at two spots that are potential sites, one in Pennsylvania and one in New York. But we need your input!

If you would like to chime in on this issue or would be willing to be a host for a station please contact Kim at ksk76@cornell.edu so we can start compiling responses and make a decision about where to put the next station.

If you would rather complete a quick 3 question survey you can click [this link](#).

VIP

Our Vineyard Improvement Program has been exceptionally active as it is drawing to a close. Seven reimbursements have been submitted in the past month that account for 213.57 acres of abandoned or less productive Concord vineyard removed. Most of that acreage has been designated to be used for field crops, but almost 29 acres were replanted to Concord. Those seven applicants combined will be reimbursed a total of \$190,043.50.

So far we have had 39 applicants complete projects. There are 17 pending completion, and 5 withdrawn for various reasons.

Figure 2 VIP replanted Concord Vineyard



Figure 1 Onset HOBO station located at CLEREL



CROP GROWERS

Your first choice for crop insurance.

PROTECT YOUR CROP and your farm's bottom line.



Unpredictable weather like late frosts or summer hail storms can damage fruit crops. This can leave you with a total crop loss or damaged fruit you can't market.

Our Crop Growers specialists understand local weather and work with producers to develop a risk management plan that not only aligns with their risk tolerance but helps them meet their financial goals. When Mother Nature leaves a chilling effect across your region, we will make sure you're still standing after the thaw.

Our goal is to protect your investment.

**Find out why we're the first
choice for crop insurance.**

800.234.7012 | CropGrowers.com

CROP GROWERS IS AN EQUAL OPPORTUNITY PROVIDER



DOUBLE-A
VINEYARDS

Own Rooted & Grafted Certified Grapevines

Berries, Hops, Wine Making, Vineyard
Supplies & More

www.doubleavineyards.com

10317 Christy Rd
Fredonia, NY 14063
716-672-8493

**Chautauqua County Farm Bureau®
is working hard to gain workforce
options, retain necessary
protectants, and ensure policy
that benefits our growers**



Join Today!
NYFB.org 800-342-4143

Links of Interest:

Cornell Cooperative Extension:

<https://cals.cornell.edu/cornell-cooperative-extension>

Efficient Vineyard:

<https://www.efficientvineyard.com/>

LERGP:

<https://lergp.cce.cornell.edu/>

<https://lergp.com/>

NYSIPM:

<https://cals.cornell.edu/new-york-state-integrated-pest-management>

Veraison to Harvest:

<https://cals.cornell.edu/viticulture-enology/research-extension/veraison-harvest>

