



July 17, 2024

Finger Lakes Vineyard Update

Spotted Lanternfly in the FLX

We've said that it wasn't a matter of IF Spotted Lanternfly would start to get established in the Finger Lakes, but rather of WHEN. When has arrived.

Last week, a member of the public notified the NYS IPM Program and Finger Lakes Grape Program that they had found spotted lanternfly (SLF) nymphs on their property in Romulus, NY. A follow-up inspection by an inspector from New York's Department of Ag & Markets has confirmed the finding. The inspector only found small numbers of nymphs at the site, but their presence indicates that they very likely hatched in the area this spring, and are likely here to stay.

In light of this, Brian Eshenaur of the IPM Program and I want to give growers some guidance on what they can and/or should be doing at this point.

1. *Don't freak out.* We've known this pest was coming and would eventually show up here, so while it certainly isn't welcome news, this isn't a surprise. Thanks to the experiences and hard work of our friends in Pennsylvania, we are much better prepared to respond to the arrival of SLF. When a new population is found in area, especially a smaller one as this appears to be right now, it takes a year or two for the numbers to build to a point where they become a concern. At this point, we don't anticipate that SLF will have a real impact on any vineyards this year.
2. *Be more active in scouting for Tree of Heaven* if you haven't done so already, start scouting treelines around vineyard blocks to identify any [Tree of Heaven \(TOH\)](#). While SLF can feed on many different plants, they have a special relationship with TOH, it's likely the first plant on which you will find SLF, and females can produce more offspring if they feed on TOH than if they don't.
3. *Scouting vineyards in September and October for SLF is especially important*, as this is when the spotted lanternfly adults move into vineyards from surrounding trees. Females will also be laying eggs on just about anything they find.
4. If you find SLF nymphs (now) or adults (starting sometime in August), be sure to report them using the [SLF Reporting Form](#), or contact Hans Walter-Peterson (315-521-8789) and I will help you to get the information to IPM or Ag & Markets.

In This Issue:

Spotted Lanternfly in the FLX	pg. 1
Maddie Oravec	pg. 3
In The Vineyard	pg. 4
NYS Farm Directory	pg. 6
Events	pg. 7
GDDs	pg. 8



SLF nymphs have 4 stages of development before becoming adults. Nymphs in stages 1-3 are black with white dots (upper photo), stage 4 nymphs develop a red coloration on their back (lower photo). Source: NYS IPM Program

Resources about how to identify different SLF life stages or Tree of Heaven (which can easily be mistaken for sumac or black walnut) can be found at the NYS IPM website about SLF at <https://cals.cornell.edu/new-york-state-integrated-pest-management/outreach-education/whats-bugging-you/spotted-lanternfly>.

We will be reaching out shortly to the vineyards that are close to where the nymphs were found to discuss potential scouting and trapping that will likely begin in the area.

Spotted Lanternfly in the FLX (continued from pg. 2)

Our next Tailgate Meeting will be next Tuesday, July 23 at Knapp Winery beginning at 4:30, and that meeting will be devoted to giving growers more information about SLF and Tree of Heaven, what we know and don't know about this new population at this point, and provide growers an opportunity to ask questions. We are communicating with IPM and Ag & Markets staff to see if they can be part of this meeting to offer their insights as well. I will send out some more information later in the week about this as we develop the meeting agenda further. In the meantime, don't hesitate to contact us if you have questions.

I have attached the full press release about this finding from the Department of Ag & Markets below for some further information, along with a few other resources to check out.

SLF Resources:

NYS IPM Program SLF Information:

<https://cals.cornell.edu/new-york-state-integrated-pest-management/outreach-education/whats-bugging-you/spotted-lanternfly>

StopSLF.org: A very comprehensive site with resources, research reports and more from a variety of research institutions

<https://www.stopslf.org/>

Penn State University SLF Management Resources:

<https://extension.psu.edu/spotted-lanternfly-management-resources>

Note: Not all the information here is relevant to New York (e.g., quarantines), but it is still a very comprehensive source of information from our neighbors who have been living with this pest for several years.

From: NYS Ag & Mkts July 16, 2024

Dear Wine and Grape Industry Partners,

The New York State Department of Agriculture and Markets is reaching out to alert you to a new find of Spotted Lanternfly (SLF) in the grape-growing region of the Finger Lakes. Late last week, the Department received reports of SLF in Romulus from its partners at the Integrated Pest Management (IPM) Program at Cornell University. The Department immediately sent its inspectors to the area, who were able to confirm the presence of SLF.

This is of great concern to the Department as SLF is known to feed on more than 100 plant species, including tree-of-heaven, and plants and crops that are critical to New York's agricultural economy, such as grapevine, apple trees, and hops.

Since the first detection of SLF in New York on Staten Island in 2020, the New York State Department of Agriculture and Markets has been working closely with its partners statewide to slow the spread of this invasive insect. It has since been reported in all New York City boroughs, Long Island, and several areas in Upstate New York; however, this is the first detection in proximity to commercial vineyards in the Finger Lakes.

Spotted Lanternfly in the FLX (continued from pg. 2)

The Department is currently working with Cornell IPM and Hans Walter-Peterson to conduct a thorough survey of the vineyards in the surrounding area to better understand the extent of the established population of SLF. We expect to know more in the coming days and, in the meantime, we will also be working to coordinate with the New York Wine and Grape Foundation and Cornell IPM an in-person informational meeting with all grape growers as soon as possible.

We also encourage you to report any sightings on your properties to the Department by reporting SLF immediately after it is found. Follow these steps:

- Take a photo
- Collect a sample and place it in a freezer or in a jar with rubbing alcohol or hand sanitizer

Contact the SLF responders and report SLF directly at this link <https://survey123.arcgis.com/share/a08d60f6522043f5bd04229e00acdd63>

After you have reported SLF in your area and collected a sample, you should kill any additional SLF you see by stepping on it or crushing it.

We will keep you informed as we continue to learn more, and please watch for updates on the informational session. Please also feel free to reach out to me directly if you have any questions.

Thank you,

Christopher A. Logue

Director, Division of Plant Industry

New York State Department of Agriculture and Markets

Cornell welcomes Maddie Oravec, assistant professor in Horticulture



Cornell is excited to welcome one of its newest assistant professors, [Dr. Maddie Oravec](#). Maddie officially started July 1 and will be filling the Grapevine Breeding, Genetics and Genomics faculty position at Cornell AgriTech.

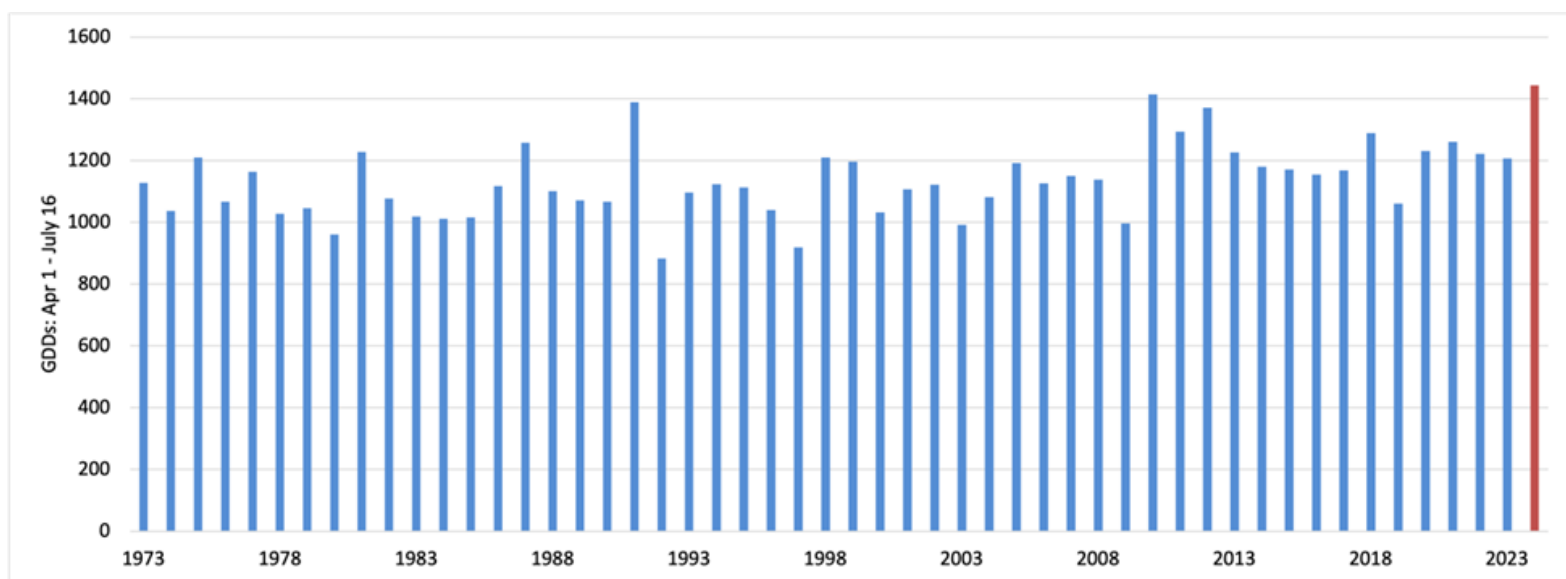
An upstate New York native, Maddie earned a B.S. in Plant Sciences from Cornell where she also played on the varsity polo team. Following an M.S. at Purdue and Ph.D. in Plant Breeding and Plant Genetics from the University of Wisconsin, she has conducted post-doctoral research at the University of Minnesota and University of Wisconsin working on circadian biology and root vegetable breeding.

Maddie is looking forward to continuing the long and storied history of grape breeding at Cornell AgriTech, with a research program focused on genetic understanding and improvement of grapes, emphasizing on fruit quality, environmental resilience, and biotic resistance.

In the Vineyard

Every year, we track growing degree days (GDDs) and rainfall at two locations in the Finger Lakes – at the Teaching & Demonstration Vineyard near Dresden, and in Geneva at one of AgriTech’s research farms. The Geneva location is where our 50-year data set comes from that we use for longer term comparisons of any given season or to see trends in how our climate are changing over time.

The most recent data from Geneva shows that we are about 15 days ahead of our 50-year average GDD accumulation up through July 16. In other words, the number of GDDs we have accumulated in 2024 so far is the same as what we have on average on August 1. Out of curiosity, I looked at GDD accumulation from April 1 – July 16 for every year going back to 1973, when our data set begins.



It might not be surprising to some, but we have accumulated more heat through the first 3½ months of 2024 than in the same period of any year going back to 1973. Is it any wonder that the vines are growing quickly, hedging passes are happening earlier than usual, and many growers are feeling behind on vineyard tasks?

This does not necessarily mean that the trend will continue. The next warmest years for this period were 1991 and 2010, but the latter parts of those two seasons weren’t as warm and we ended up with “average” GDDs by the end of October. However, the outlook for the next three months from NOAA is that there is a better than 50-50 chance that the period from July – September will be warmer than normal, so this year it seems we will continue the trend that we have been having so far this season.

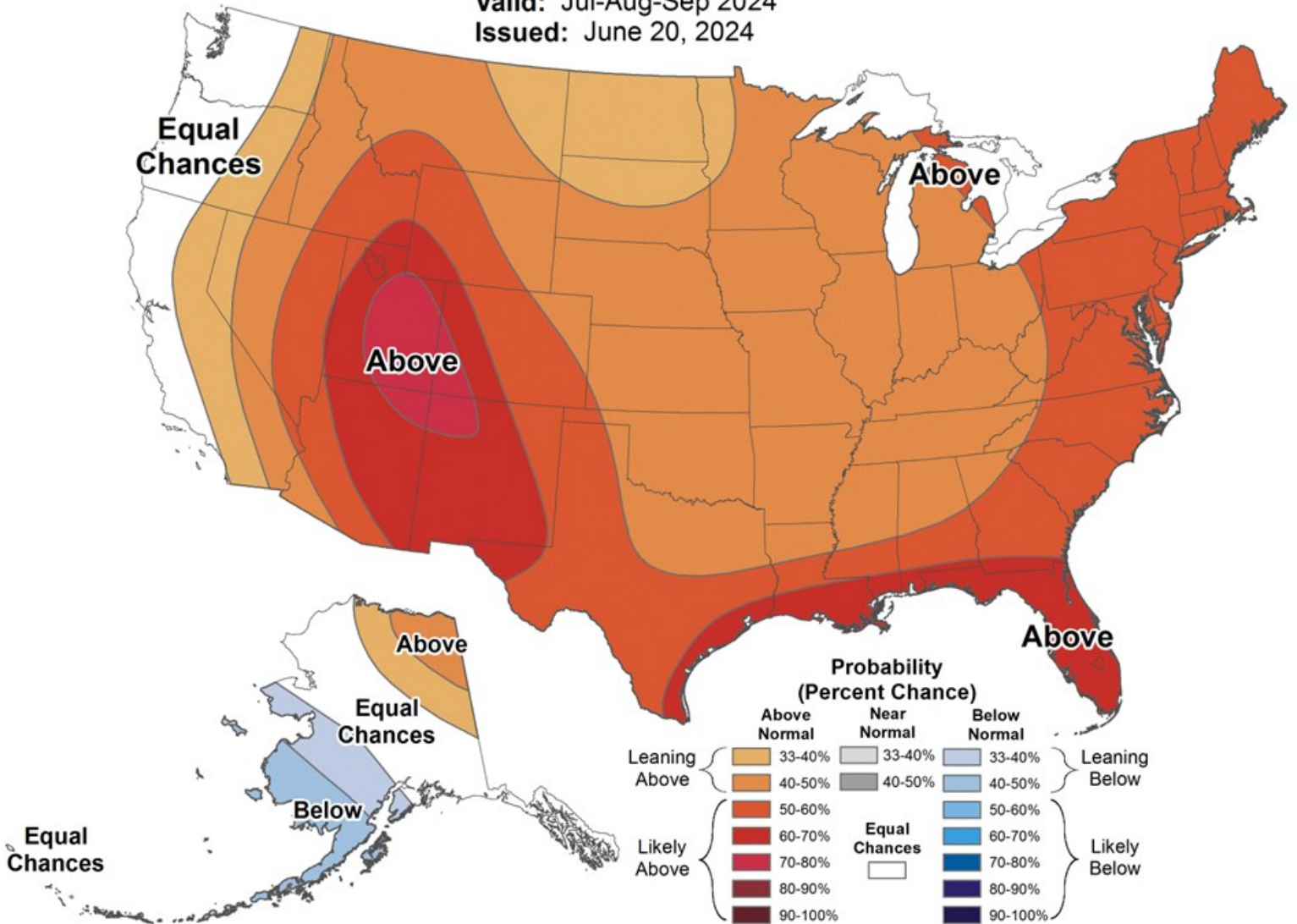
In the Vineyard (continued from pg. 4)



Seasonal Temperature Outlook

Valid: Jul-Aug-Sep 2024

Issued: June 20, 2024



Source: National Oceanic & Atmospheric Administration



New York Farm Directory 2-Year Update

The Department of Agriculture and Markets has launched the online Farm Directory, which can connect consumers to producers of farm products across the state and help strengthen the local food supply chain.

The Farm Directory is active on the Department's website: <https://agriculture.ny.gov/farming/new-york-state-farm-directory>. To search the Directory, view the "Search the Directory" section on the Department's webpage and click the "Search the Directory" button. Upon landing on the Farm Directory homepage, you will see information for each listed farm, which can include the farm name, farm type, point of contact, addresses, telephone number, email address, website, social media, and a listing of all available products produced by the farm. Other categories of interest to the public, like the farm's inclusion in the New York State Grown & Certified Program and designations of Organic, Halal, or Kosher certified, may also be noted. Public users can sort or search by any field.

The Department understands that not every farm offers products to the public at the farm site, so each farm can indicate whether it is open to the public or if there are other ways to access their farm product. This might include listing a distributor, a brand name that your product is eventually marketed under, or a specific consumer-facing website where the public can determine where to purchase your product in a retail location. The information available on the Directory for each farm can be tailored to meet the individual needs of each business, and farmers will be able to update their information as desired.

Section 16(52) of the New York State Agriculture and Markets Law, first enacted in 2021 and amended in 2022, requires the Department to create a directory of every farm in New York State. The purpose of the Directory, as stated in the law, is to allow entities to access available products grown in New York State, strengthen New York agriculture, and support the environment, communities, small businesses, and local economies.

Farms that choose not to participate in the Directory **must** notify the Department of this decision by opting out, as required by law. Farms may do this via email, telephone, or by indicating it through the online Directory linked to the website above.

Farms that initially opt-out can later choose to be included at any point. Also, farms can opt out after initially choosing to participate in the Directory. Sign in to the Farm Directory using your NY.gov ID to opt out for an existing user. Go in to edit your farm and choose the delete button at the bottom of the page.

If you own a farm and want to participate in the Directory, please visit the Department's website and create your farm listing. If you are an existing Farm Directory user, please update your farm information to reflect any relevant changes or updates. Finally, if you own a farm, have not participated in the Farm Directory, or opted out, please do so by July 31st.

For questions or additional information on the Farm Directory, please contact the Department at (518) 485-1050 or FarmDirectory@agriculture.ny.gov.

Upcoming Events

Don't forget to check out the calendar on our website (<https://blogs.cornell.edu/flxgrapes/events/>) for more information about these and other events relevant to the Finger Lakes grape industry.



Tailgate Meeting

Tuesday, July 23 4:30 – 6:00 PM
Knapp Vineyard, 2770 Ernsberger Road, Romulus, NY

Our next Tailgate Meeting will be on Tuesday, July 23 at Knapp Vineyards located in Romulus, NY. Due to the recent discovery of Spotted Lanternfly in the region, the meeting will focus on information regarding SLF, including identifying it, where to look for it, and how and when to consider taking action to manage it. We will also review how to identify its favorite host, Tree of Heaven (TOH), why it's important to locate it on your property, and how to potentially manage it. Like our other Tailgates, this meeting has been approved for 1.5 pesticide recertification credits by DEC.

Here is the remaining schedule for Tailgate Meetings this year:

- August 13, 2024 Randall Standish Vineyards, 5506 NY-21, Canandaigua, NY
- August 20, 2024 Miles Wine Cellars, 168 Randall Crossing Rd, Himrod, NY

Equipment Rodeo 2024

Wednesday, August 14 11:00 – 4:00 PM
Wagner Vineyards
9322 State Route 414, Lodi NY

The NY State Wine Grape Growers are organizing and sponsoring the 2024 Equipment Rodeo this summer, where growers will get to see a wide range of vineyard equipment including sprayers, tractors, implements, and many others. Admission is free, and a food truck will be onsite. More details are on the event flyer included in this week's Vineyard Update.

2024 GDD & Precipitation

FLX Teaching & Demonstration Vineyard – Dresden, NY					
Date	Hi Temp (F)	Lo Temp (F)	Rain (inches)	Daily GDDs	Total GDDs
7/10/24	93.6	72.1	0.41	32.9	1344.3
7/11/24	77.4	66.6	0.01	22.0	1366.3
7/12/24	84.6	64.8	0.00	24.7	1391.0
7/13/24	84.9	68.0	0.00	26.5	1417.5
7/14/24	89.2	65.8	0.00	27.5	1445.0
7/15/24	90.0	70.5	0.52	30.3	1475.2
7/16/24	88.9	65.8	0.00	27.4	1502.6
Weekly Total			0.94"	191.1	
Season Total			13.28"	1502.6	

GDDs as of July 16, 2023: 1281.0

Rainfall as of July 16, 2023: 14.03"



Seasonal Comparisons (at Geneva)

Growing Degree Days

	2024 GDD ¹	Long-term Avg GDD ²	Cumulative days
April	69.9	64.2	+1
May	393.5	255.5	+11
June	589.0	484.3	+13
July	391.6	647.2	+15
August		596.8	
September		361.1	
October		113.9	
TOTAL	1444.0	2522.9	

¹ Accumulated GDDs for each month.

² The long-term average (1973-2023) GDD accumulation for that month.

³ Numbers at the end of each month represent where this year's GDD accumulation stands relative to the long-term average. The most recent number represents the current status.

Precipitation

	2024 Rain ⁴	Long-term Avg Rain ⁵	Monthly deviation from avg ⁶
April	4.73"	2.86"	+1.87"
May	2.75"	3.04"	-0.29"
June	3.75"	3.58"	+0.17"
July	2.37"	3.48"	
August		3.19"	
September		3.43"	
October		3.39"	
TOTAL	13.60"	22.97"	

⁴ Monthly rainfall totals up to current date

⁵ Long-term average rainfall for the month (total)

⁶ Monthly deviation from average (calculated at the end of the month)

Additional Information

Become a fan of the [Finger Lakes Grape Program on Facebook](#), or follow us on [Twitter \(@cceflgp\)](#) as well as YouTube. Also check out our website at <http://flgp.cce.cornell.edu>.

Got some grapes to sell? Looking to buy some equipment or bulk wine? List your ad on the [NY Grape & Wine Classifieds website](#) today!

Finger Lakes Grape Program Advisory Committee

Eric Amberg- Grafted Grapevine Nursery

Dave Orzel– Nutrien Ag

Matt Doyle- Doyle Vineyard Management

Tara Farnan- Barrington Cellars

Chris Gerling- Cornell University Extension

Mike Colizzi- E & J Gallo

Tina Hazlitt- Sawmill Creek Vineyards

Cameron Hosmer- Hosmer Winery

Herm Young– Young Sommer Winery

John Santos- Hazlitt 1852 Vineyards

Steve Sklenar– Sklenar Vineyard

Justine Vanden Heuvel- Cornell University

Peter Weis – Weis Vineyards

Adam Folts—Vineyard View Winery

Ian Wagner—Wagner Vineyards

Cornell University Cooperative Extension provides equal program and employment opportunities. CCE does not endorse or recommend any specific product or service. This program is solely intended to educate consumers about their choices. Contact CCE if you have any special needs such as visual, hearing or mobility impairments.

Cornell Cooperative Extension Finger Lakes Grape Program

Hans Walter-Peterson—Team Leader
Donald Caldwell—Viticulture Technician
Ellen Coyne—Project Field Technician

<https://blogs.cornell.edu/flxgrapes/>

“Cornell Cooperative Extension is an equal opportunity, affirmative action educator and employer”

