



CROP UPDATE -June 20, 2024

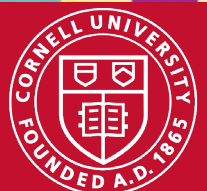
WELCOME SUMMER

Cornell Cooperative Extension
Lake Erie Regional Grape Program



PennState Extension

Building Strong and Vibrant New York Communities
Diversity and Inclusion are a part of Cornell University's heritage. We are a recognized employer and educator valuing AA/EEO, Protected Veterans, and Individuals with Disabilities.



In this copy:

USDA Announced Eleven New York Counties Primary Natural Disaster Areas Due to Spring Frost/Freeze- Andrew Holden- [page 4](#)

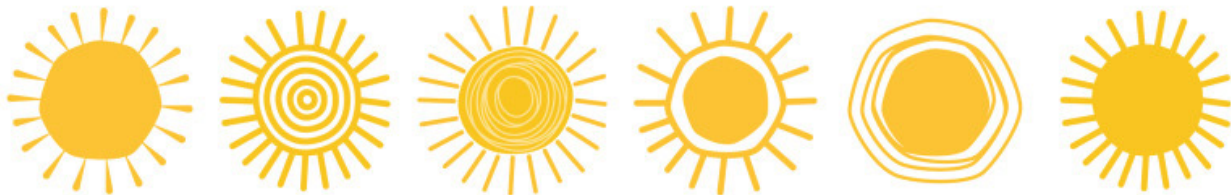
Informational Webinar for Grape Producers Impacted by the April Freeze-[page 6](#)

PA Update-Bryan Hed- [page 10](#)

We Need Your Downy Mildew Infested Leaves-[page 12](#)

Ziram, Captan, Insect and Pest Updates- Megan Luke- [page 13](#)

GDD Chart- Kim Knappenberger- [page 16](#)



Jennifer Phillips Russo - LERGP Viticulture Specialist:

jjr268@cornell.edu

Cell: (716) 640-5350

Megan Luke –LERGP Penn State Extension Viticulture and Tree Fruit Educator

MFL5873@psu.edu

Cell:(716) 397-9674 Office:(814) 825-0900

Andrew Holden-LERGP Penn State Extension Business Management Educator

azh6192@psu.edu

716-792-2800 ext 202

Cell: 716-640-2656

Kim Knappenberger – Extension Support Specialist

ksk76@cornell.edu

716-792-2800 ext 209

Kate Robinson – Administrative Assistant

kjr45@cornell.edu

716-792-2800 ext 201

[Click here to
watch Podcasts](#)

The Lake Erie Regional Grape Program is a Cornell Cooperative Extension partnership between Cornell University and the Cornell Cooperative Extensions in Chautauqua, Erie and Niagara county NY and in Erie County PA.

Upcoming Events

June 26, 2024

10:00am- Coffee Pot Meeting
 Zach & Alicia Schneider Farm
 771 Bradley Rd. Silver Creek, NY 14



July 3, 2024

10:00am-Coffee Pot Meeting
 Liberty Winery
 2861 US Route 20 Sheridan, NY 14135

July 10, 2024

NO COFFEE POT MEETING

July 17, 2024

10:00am- Coffee Pot Meeting
 Chateau Niagara Winery
 2466 West Creek Rd. Newfane, NY 14108

Chautauqua County Farm Bureau®
 is working hard to gain workforce
 options, retain necessary
 protectants, and ensure policy
 that benefits our growers



Join Today!
 NYFB.org 800-342-4143

 **Clover Hill**
Sales LLC

10401 Sidehill Road, North East, PA 16428

814-725-3102

sales@cloverhillsales.com

www.cloverhillsales.com



**DURAND
 WAYLAND**



Woods Equipment Company



EDWARDS
 EQUIPMENT COMPANY



TISCO



**STOLTZFUS
 SPREADERS**

**Harvester Parts and Belting
 Southern Yellow Pine Posts
 Tractor Tires & Tubes • And So Much More!**

**YOU'RE GREAT AT FARMING.
 WE'RE GREAT AT INSURANCE.**



BETTS
 INSURANCE AGENCY

27 E MAIN STREET
 WESTFIELD, NY

716 269 4322



NATIONWIDE® AGRIBUSINESS
On Your Side®
 Farm Certified Agency

Business Management

Andrew Holden, Business Management Educator, Penn State University, LERGP

USDA Announced Eleven New York Counties Primary Natural Disaster Areas Due to Spring Frost/Freeze

The USDA announced on Tuesday, June 18, 2024, that they have designated 11 NY counties as natural disaster areas following the springs cold event. There are also many adjoining counties that are eligible, including Erie County, PA. This designation is good news as it should allow insurance companies to make decisions on damage quicker and possibly process claims sooner. With this designation, the Farm Service Agency also opens access for growers to Emergency Farm Loans. These loans are the same as other FSA Loans in that they require producers to not have access to commercial loans. If you currently have a loan provider, you would likely be encouraged to use them. These emergency loans have the possibility of offering lower interest rates and higher borrowing limits for those who are eligible. I included contact information of local FSA Loan Managers at the bottom of this article for you to reach out to with additional questions. Finally, this announcement is a beneficial step to any more federal/state assistant programs that could happen in the future. There have been no discussion of any potential additional programs, but the disaster area declaration is the first step if anything were to be provided.

If you are dealing with crop insurance claims this year, Farm Credit East is hosting a **Grape Crop Insurance Claim Assistance Webinar** on **Tuesday, June 25, from 11:00 am to 12:00 pm**. This webinar will provide valuable insights and guidance on managing your claims effectively.

Here is a link to register for the event: [Registration \(gotowebs.com\)](https://www.gotowebs.com/registration)

Please see the official USDA press release here:

This Secretarial natural disaster designation allows the United States Department of Agriculture (USDA) Farm Service Agency (FSA) to extend much-needed emergency credit to producers recovering from natural disasters through [emergency loans](#). Emergency loans can be used to meet various recovery needs including the replacement of essential items such as equipment or livestock, reorganization of a farming operation, or to refinance certain debts. FSA will review the loans based on the extent of losses, security available, and repayment ability.

Impacted Area: New York

Triggering Disaster: Frost/Freeze from 4/22/2024 - 4/27/2024_

Application Deadline: 2/23/2025

Primary Counties Eligible: Cayuga, Chautauqua, Chemung, Erie, Ontario, Orleans, Oswego, Saratoga, Schuyler, Tioga, Wayne

Contiguous Counties Also Eligible:

New York: Albany, Broome, Cattaraugus, Cortland, Fulton, Genesee, Hamilton, Jefferson, Lewis, Livingston, Madison, Monroe, Montgomery, Niagara, Oneida, Onondaga, Rensselaer, Schenectady, Seneca, Steuben, Tompkins, Warren, Washington, Wyoming, Yates

Pennsylvania: Bradford, Erie, Susquehanna, Tioga, Warren

More Resources

On farmers.gov, the [Disaster Assistance Discovery Tool](#), [Disaster Assistance-at-a-Glance fact sheet](#), and [Loan Assistance Tool](#) can help you determine program or loan options. To file a Notice of

Loss or to ask questions about available programs, contact your local [USDA Service Center](#).
For more information or questions regarding the Emergency Farm Loans, please contact your local FSA Farm Loan Manager:

Amanda K Ritchey, Farm Loan Manager – Chautauqua, Cat, and Erie Counties NY
Phone: (716) 664-2351
Email: amanda.ritchey@usda.gov
Address: 220 Fluvanna Ave., Suite 600, Jamestown, NY 14701

Allison Lynn Pruskowski, Farm Loan Manager – Erie County PA
Email: allison.pruskowski@usda.gov
Phone: (814) 336-2127 Ext 2
Address: 14699 N Main St Ext Meadville, PA 16335-9441

[Disaster Assistance Emergency Loan Program Factsheet](#)

My contact information:

Mobile (call or text): (716) 640-2656
Office: (716) 792-2800
Email: AZH6192@psu.edu



NORTH EAST FRUIT GROWERS
2297 KLOMP ROAD, NORTH EAST, PA 16428

814.725.3705

nefruitgrowers.com

nefruitgrowers@verizon.net

OPEN YEAR-ROUND MONDAY – FRIDAY 8AM – 5PM
OPEN SATURDAYS APRIL– NOVEMBER 8AM – NOON

BULK FERTILIZER
BAGGED FERTILIZER
CHEMICALS
VINEYARD SUPPLIES
ORCHARD SUPPLIES
PRUNING SUPPLIES
GLOVES & BOOTS
POND PRODUCTS
PRODUCE PACKAGING
HOME OWNER SUPPLIES
& SO MUCH MORE!

DRYSHOD
WATERPROOF FOOTWEAR



ORIGINAL
LOWE

FELCO
SWISS  MADE



CORONA

SEASON AFTER SEASON

Informational Webinar for Grape Producers Impacted by the April Freeze

Grape producers impacted by the late April freeze are invited to join Farm Credit East and Crop Growers, Farm Credit East's insurance provider, for a free, informational webinar on Tuesday, June 25 at 11:00 a.m. ET. This webinar will discuss the challenges following the freeze event impacting producers across New York and provide attendees with insights to navigate the complexities of the insurance claim process.

In this webinar, specialized Crop Growers crop insurance agents will discuss the repercussions of the April 25, 2024, freeze event on grape crops and how it affects insurance claims. Additionally, a crop insurance claims manager will provide a step-by-step guide through the claim procedure. The session will conclude with an opportunity for attendees to have their claims questions answered.

This webinar taking place on June 25 is free to attend. Interested grape producers can register at [FarmCreditEast.com/Webinars](https://www.farmcrediteast.com/Webinars). Contact Chris Laughton at (800) 562-2235 or Chris.Laughton@farmcrediteast.com for more information.

<https://www.farmcrediteast.com/about/News-Room/press-releases/240618CropGrowersWebinar>

CROP GROWERS
Your first choice for crop insurance.

PROTECT YOUR CROP and your farm's bottom line.



Unpredictable weather like late frosts or summer hail storms can damage fruit crops. This can leave you with a total crop loss or damaged fruit you can't market.

Our Crop Growers specialists understand local weather and work with producers to develop a risk management plan that not only aligns with their risk tolerance but helps them meet their financial goals. When Mother Nature leaves a chilling effect across your region, we will make sure you're still standing after the thaw.

Our goal is to protect your investment.

**Find out why we're the first
choice for crop insurance.**

800.234.7012 | [CropGrowers.com](https://www.CropGrowers.com)

CROP GROWERS IS AN EQUAL OPPORTUNITY PROVIDER

Westfield

AG & TURF LLC

Andy Campell
General Manager

716-326-4671 • 7521 Prospect Rd • Westfield, NY 14787
www.westfieldagandturf.com

We Service What We Sell!

CASE II

Cub Cadet

OXBO

YANMAR

2024 CLUB CAR

XRT 1550 4X4 UTILITY VEHICLE

STARTING AT
\$15,551

- ✓ 4X4
- ✓ AVAILABLE IN KAWASAKI 4-CYCLE ENGINE OR KUBOTA D722 DIESEL ENGINE
- ✓ INDEPENDENT DOUBLE A-ARMS WITH COIL-OVER SHOCK
- ✓ SEMI-INDEPENDENT, 4-LINK SOLID AXLE
- ✓ ONLY 58.5 INCHES WIDE, PERFECT TO FIT IN THOSE TOUGH PLACES
- ✓ POWER TILT BED
- ✓ COMES IN A CREW MODEL



FIND OUT MORE AT

DAVE WARREN POWERSPORTS IN WESTFIELD, NY

7540 US-20, WESTFIELD, NY 14787 | (716) 232-3030

WWW.DAVEWARRENMOTORS.COM

SHIELD YOUR GRAPES

FROM POWDERY MILDEW WITH

TORINO
FUNGICIDE
THE ONLY GROUP U6 FUNGICIDE

METTLE
125 ME
FUNGICIDE
HIGHLY SYSTEMIC GROUP 3 FUNGICIDE

QUINTEC
FUNGICIDE
THE ONLY GROUP 13 FUNGICIDE

GOWANCO.COM | **Gowan**
USA

Mettle® is a registered trademark of Gowan Company L.L.C. Torino® is a registered trademark of Nippon Soda Company, Ltd.
Quintec® is a registered trademark of Nissai Chemical Corporation. Always read and follow label directions.



Farmers | Farm Families | Agribusiness

- Financial analysis
- Personal well-being
- Mental Health & Stress
- Retirement and estate planning
- Family business relationships
- Communication
- Business planning



100% free, 100% confidential
Call 1-800-547-3276

Cornell CALS
College of Agriculture and Life Sciences

Dyson
Cornell
SC Johnson College of Business

PA Update

Bryan Hed, Research Technologist, Lake Erie Grape Research and Extension Center

Weather: At our location by the lake, we have racked up 334.5 growing degree days (gdds) with 2.35 inches of precipitation in June. We have accumulated 806.4 gdds since April 1.

Phenology: Here by the lake, we are about 10 days past bloom for Concord, not quite beyond the fruit susceptibility period for powdery mildew on Concord, but nearly there. Concord berries are considered about resistant to powdery mildew when they reach about a quarter inch in diameter. However, Concord berries will be susceptible to black rot until about the middle of July.

Diseases: Dry conditions over the past 10-14 days have very much limited opportunities for black rot or Phomopsis infections. Any black rot that developed from the infection periods during the first 6 days of June, should be just about fully expressed and observable by now. However, there is a chance that infection occurred from rainfall on June 9 (that doesn't show up on NEWA), that may not be fully expressed yet. Hopefully everyone has applied that first post bloom spray in a timely fashion ("timely" = within 10-14 days of the pre bloom spray) and are beginning to contemplate what to apply for the second post bloom spray. In most years, that second post bloom spray will depend heavily on how well you've controlled diseases to date, based on the presence/absence of active disease on leaves and fruit (determined by scouting). However, the lack of infection periods over the past 10-14 days or so, means that the most serious threat is from powdery mildew at this time: with secondary cycles having kicked in - that don't require rainfall for spore release or infection - every day is probably an infection period for powdery mildew.

Powdery mildew: For spray decisions regarding powdery mildew, research at Cornell has shown that in most years, lightly cropped Concord vines will benefit little from continued control measures against powdery mildew, once fruit are resistant (about when Concord fruit are a quarter inch in diameter). Conversely, Concord vines with above average to large crops will benefit from continued efforts to control powdery mildew, to keep canopies operating at maximum fitness and ensure that you reach minimum sugar standards by harvest. Note the use of the term, "in most years": if conditions turn poor for ripening (cloudy and wet), all bets could be off. Juice grape growers do not have to apply "top notch" materials at this time but could resort to a Nutrol (plus surfactant), a Harvest-More (not a fungicide, but will add a little potassium and control mildew by about 30%), a copper/lime spray, a tebuconazole product (which will add black rot protection too). **For really large crops**, you could also continue to use more effective products like Quintec, Cevya, or Endura, but make sure you rotate FRAC groups and do not use any one of these more than twice per season. A tank mix of Nutrol or Harvest-More with these latter materials would help to delay the development of resistance.

Sensitive hybrids and Vitis vinifera are another story; you will need to protect fruit of



NEW HOLLAND
AGRICULTURE



Mahindra
TRACTORS



NEW HOLLAND
CONSTRUCTION



LARRY ROMANCE & SON, INC.

Parts - Sales - Service

Come see us for all your Vineyard - Dairy - Construction & Consumers Needs

SHERIDAN, NY • 2769 ROUTE 20
(716) 679-3366 • tractorsales@netsync.netARCADE, NY • 543 W. MAIN ST.
(585) 492-3810

www.larryromanceandson.com

these varieties against powdery mildew until at least 4 weeks after bloom. Materials like Aprovia/Aprovia Top, Miravis Prime, Gatten, Endura, Quintec, or Luna Experience, will continue to provide excellent control of powdery mildew. Just be sure you rotate FRAC groups each time. A tank mix with sulfur is also highly recommended for sulfur tolerant wine varieties.

Black rot: Black rot fruit susceptibility is still there for all varieties for another 3 (Concord/natives) to 5 (Vitis vinifera) weeks or so. If you currently see leaf and/or fruit infections (from infection periods in May and early June), know that *there is still the potential for more fruit infections if the weather turns wet.* Mancozeb, Ziram, and the FRAC 3 and FRAC 11 materials are highly effective against this disease.

Downy mildew: Niagara clusters will still retain some susceptibility to downy mildew infections through the cluster stems, for probably another 2 weeks or so beyond the end of direct fruit susceptibility (until about second week in July?). There is a chance for thunderstorms every day (30-40%?) through the weekend, with the greatest chance (70%?) on Sunday. But its going to be 'hit or miss'. Rain could result in a 'resurrection' of downy mildew, so stay vigilant if you're growing a susceptible variety (any vinifera and sensitive hybrids, Niagara and Catawba). Copper/lime, Revus/Revus Top (not on Concord), Phosphorous acid products, Ranman, and Zampro are all very effective. Ziram will provide some protection from downy mildew but is not as effective as mancozeb or captan.

Bunch rot: For premium wine varieties, leaf removal in the fruit zone at this time, by machine or by hand, generally provides significant reductions in bunch rot on rot susceptible wine varieties (Riesling, Vignoles, Pinot noir and gris, Chardonnay, etc). Leaf removal can also improve fruit quality and may even reduce manual harvest costs (the clusters are easier to see and remove if you're hand harvesting).



DOUBLE A
VINEYARDS

Own Rooted & Grafted Certified Grapevines

Berries, Hops, Wine Making, Vineyard
Supplies & More

www.doublevineyards.com

10317 Christy Rd
Fredonia, NY 14063
716-672-8493

KEEP YOUR FARMING OPERATION FINANCIALLY HEALTHY

Crop insurance offers a lot of choices. Which protection is right for your business?

Contact your local Rain and Hail agent to get your crop insurance consultation before it is too late.

Sales closing date is November 20!

For details contact:

GEORGE HAFFENDEN

716.725.7840

ghaffenden@american-national.com

Rain and Hail

A Chubb Company

This institution is an equal opportunity provider and employer.



We need your **DOWNY MILDEW** infected leaves!

In 2023, in PA Lake Erie Region, high rates of Downy Mildew resistance were found to:

- **stobilurins** (Abound)
- **carboxylic acid amides** (Revus)
- **phosphorous acid** (Rampart)

Many samples showed **resistance to all three fungicides**. No resistance to phenylamides (Ridomil) was detected.

Resistance!

In 2024, **NYWGF** is funding a **survey of New York Lake Erie region vineyards for fungicide resistance**.



---**NY Growers: contact us** when **downy mildew is present in your vineyard** and we will come out to collect 10 or more infected, sporulating leaves. Isolates from the leaves will be grown in the lab to conduct bioassays and genetic testing to determine if resistance is present.

---**You will receive information** regarding the **percentage and types of resistance** present

on your farm. A regional summary will be made available to all growers (farms sampled remain **anonymous**).

- **Contact Bryan Hed at 814-725-4601 (bxh38@psu.edu) or Jessica Clippinger (jib5787@psu.edu) or Jennifer Phillips Russo at 716-640-5350 to get samples collected or with questions.**

Thank you!



Now in our 40th year, we have a tradition of providing quality products, education and superior service to both farm and home growers. Our products and spray programs are tried and tested in our own vineyards, ensuring you have a solid program for your own vineyard. We deliver products, programs and services to our customers in an efficient and personal way to enhance their growth and profit opportunities for the long term.

We are a proud dealer for -



PRODUCTS & SERVICES

- ☑ Herbicides, Fungicides & Insecticides
- ☑ Bulk & Bagged Fertilizer
- ☑ Soil and Petiole Testing
- ☑ Customized Pesticide and Fertilizer Programs
- ☑ Infaco, Felco and Bahco Shear and Lopper Repair
- ☑ Supplies for Trellis, Pruning, Tying and so much more!



Call us
716-679-1240



Visit our website
www.militellofarmsupply.com



Our location
2929 Route 39, Forestville

PA Update

Megan Luke, Penn State Extension Viticulture and Tree Fruit Educator

PA Update

Reminder: Comments on cancellation of ziram AND label changes to captan are due July 1st 2024.

Ziram- On April 30th the EPA released an update on the status of Ziram as well as a response to the comments garnered during the last public comment period. As of the date listed, they have NOT changed their stance on the cancellation of ALL registered uses for this chemistry. A final public comment period is currently open, and all impacted growers are encouraged to leave a comment or reach out to commodity groups, processors, Farm Bureau reps, etc. who may be organizing a formal response. This is the last stage of the process prior to the label receiving a federal stamp suspending use after a 12-month grace period for product to move out of the commerce pipeline.

Comment using this link: [Ziram docket comments](#)

Read response to previous comments: [here](#)

Captan- Additionally, captan has been added to the review process and docket. It doesn't look like we are at risk of losing this chemistry, the EPA is proposing increased PPE, a closed-cab requirement for air-blast applications, a reduced rate/application/season, and a few other label changes.

Comment on changes to the captan label: [here](#)

Read proposed label changes: [here](#)

*Relevant information starts on page 44 of the downloaded document

Insect and scouting update

There is still the possibility of damage from plant bugs in late bloom wine grapes, continue to keep watch for rose chafer in areas with sandy soils. Continue scouting for noxious or problematic weeds, as many species are easier to deal with in their early stages before producing extensive root systems or reseeding. Take time to familiarize yourself with invasive weed species and their management strategies, as best practices vary significantly by species. Field bindweed and Japanese knotweed populations can be increased through cultivation, herbicide burndown is ineffective for deep-rooted perennial weeds like Canada thistle. Identifying pests correctly will impact the best management techniques. Grape cane gall maker (*Ampelogypter* sp.) is active at this time, if it has become problematic in the past, this is the time where control should be applied. While the weevil rarely causes crop damage, the galls can weaken canes and cause damage in newly planted vines and cause breakage on newly trained canes.

Grape cane gall maker and grape cane girdler (*Ampelogypter* sp.) Gall maker weevils (*Ampelogypter sesostris*) are reddish-brown adults: small 3 mm long insects with a distinctive curved snout (Figure 1). Except for their color they look similar to the shiny-black adults of the grape cane girdler, (*Ampelogypter ater*) (Figure 2). Both species overwinter in the adult stage in debris on the ground.

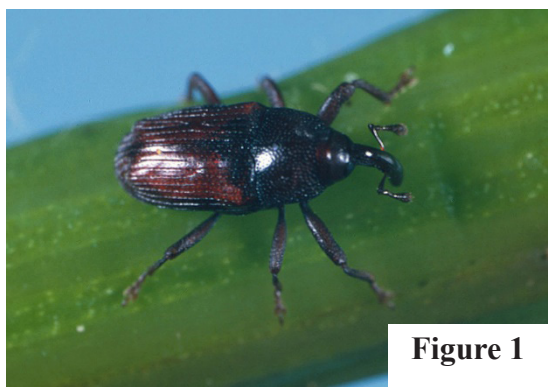
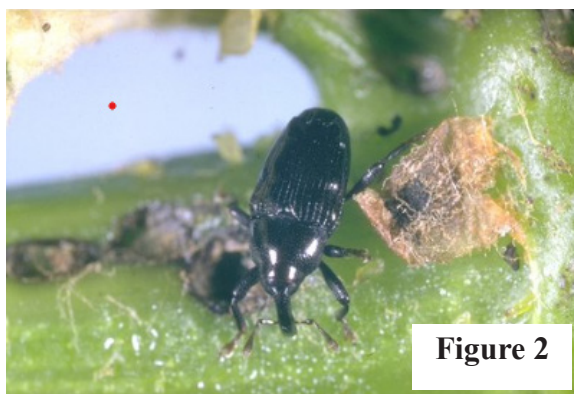


Photo Credit: Joe Ogradnick, Cornell University, courtesy Greg Loeb



Photos courtesy of Cornell IPM, Joe Ogradnick and Greg Loeb

Rose Chafer – (*Macrodactylus subspinosus* Fabricius) Adult beetles are about ½ inch long, have a light brown body coloration and long, spiny legs (Figure 3). Sandy soils between the Lake Erie shore and Route 5 are particularly prone to hosting this pest. Scouting for this pest should be conducted daily, if possible, but at a minimum of 3 times/week and should continue for about 2

weeks after bloom. Infested areas can lose extensive numbers of flower clusters if beetles are not detected early and treated. If a threshold of 2 beetles per vine is reached an insecticide application is recommended.



Adult rose chafer. Photo by Lorraine Berkett, University of Vermont

Banded Grape Bug & *Lygocorus inconspicuus* – Continue to be vigilant about scouting for banded grape bug (Figure 3) and *Lygocorus inconspicuus* (Figure 4) nymphs if your grapes are not yet in full bloom. Scout vineyard edges for these insects by examining flower clusters on about 100 shoots in different areas in the vineyard. Treatment threshold to prevent economic loss is 1 nymph per 10 shoots. Scout by tapping flower clusters over a paper plate and count the nymphs that fall off. Only the nymphal stage of these insects is harmful in grapes.

Banded Grape Bug identification and scouting technique: [video](#)

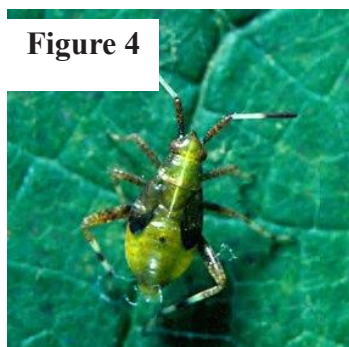


Photo Credit: Joe Ogradnick, Cornell University, courtesy Greg Loeb

Photos courtesy of Cornell IPM, Joe Ogradnick and Greg Loeb

Free Event hosted by the Erie Horticulture Society

Gravel Pit Park Annual Chicken BBQ

PDA (1 core, 1 cat) and DEC Credits Offered

Presentation topics:

- Grape disease management update
- Viticulture research and best practices
- Spotted lanternfly update
- Injectable insecticide best practices

**Equipment Show
Vendor Booths
BBQ Chicken Dinner at
6pm**

When: July 31, 2024
(4:00 AM-7:00 PM)

Where: Gravel Pit Park
10300 W. Main St.
North East, Pennsylvania
16428



Register Online
Or Call:
(716) 792-2800
ext. 201



**Cornell
Cooperative
Extension**



Contact Megan Luke
(716) 397-9674 for
more information

PennState Extension

FERTILEADER[®]
GOLD
Worth its Weight

TiMaCal

Designed to Increase
Calcium Uptake

Contact us:
Michael Intrieri: 716 421-1785
Kayla Heineman: 718 714-8281
Laing-Gro Fertilizer: 716 992-3830

www.us.timacagro.com

 **Timac AGRO**
USA

Updates and Information

Kimberly Knappenberger, Extension Support Specialist, LERGP

Station	Wild Grape Bloom Date	GBM GDD 6/20/24	Forecast GBM GDD 6/25/24
Burt (NY Mesonet)	6/1/24	382	505
North Appleton	6/1/24	394	519
Newfane (Chateau Niag)	5/24/24	528	657
Ransomville	5/22/24	610	746
Lockport	5/22/24	603	738
Brant	5/20/24	652	789
Versailles	5/20/24	616	755
Sheridan	5/20/24	665	803
Silver Creek (RT5)	5/23/24	555	693
Silver Creek (Double A)	5/20/24	665	804
Hanover	5/22/24	579	718
Forestville	5/22/24	584	723
Dunkirk	5/18/24	723	861 (810 on June23)
East Fredonia	5/22/24	573	712
Fredonia (NY Mesonet)	5/23/24	541	681
Brocton	5/22/24	574	710
Portland (CLEREL)	5/22/24	581	716
Westfield (South)	5/22/24	588	722
East Westfield	5/22/24	561	697
Westfield	5/23/24	544	676
East Ripley	5/21/24	633	764
Ripley	5/22/24	598	737
Ripley (State Line)	5/21/24	630	770
Ripley (Escarpment)	5/22/24	575	715
North East (State Line)	5/22/24	574	710
North East Lab	5/22/24	590	726
North East (Escarpment)	5/21/24	610	749
North East (Side Hill)	5/22/24	576	715
Harborcreek Escarpment	5/23/22	532	677
Harborcreek	5/21/24	643	789
Lake City	5/21/24	629	776
Lake City (Mason Farms)	5/21/24	630	777

With the high temperatures that our region has experienced this last week and forecasted to endure, please keep your eye on the wild grape Growing Degree Days (GDD). I checked the Portland station this morning and we are at 631 GDDs on the Grape Berry Moth model. This may put us before the average July 4th week spray timing for the first generation of Grape Berry Moth this year. Stay cool out there!

-Jennifer

Above is the chart showing the current accumulation of Grape Berry Moth Growing Degree Days as well as what is forecast for each station for June 25th. Please keep in mind that these are based on the estimated wild grape bloom calculated for each station by NEWA and this is causing a big discrepancy between the Burt and North Appleton stations and the rest of the stations across the belt. If you use these stations it would be helpful if you recorded wild grape bloom, but also be sure to scout to be sure you don't miss the first generation. The recent heat wave is causing us to accumulate growing degrees much more quickly this past week and heading forward.

2024 LERGP Coffee Pot Meeting Schedule

May 1, 2024 9:00am	SLF Meeting- Burch Farms 9210 Sidehill Rd. North East, PA 16428
May 8, 2024 10:00am	Sprague Farms 12435 Versailles Rd. Irving NY 14081
May 15, 2024 10:00am	Brian Chess Farm 10289 West Main Rd. Ripley NY 14775
May 22, 2024 10:00am	Schulze Vineyards & Winery 2090 Coomer Rd. Burt, NY 14028
May 29, 2024 10:00am	Kirk Hutchinson 4720 W. Main St. Fredonia, NY 14063
June 5, 2024 10:00am	LERGREC Field Day 662 N. Cemetery Rd, North East, PA 16428
June 12, 2024 10:00am	Betts' Farm- Soil Health Day 7366 East Route 20 Westfield, NY 14787
June 19, 2024 10:00am	NO COFFEE POT MEETING
June 26, 2024 10:00am	Zach & Alicia Schneider 771 Bradley Rd. Silver Creek, NY 14136
July 3, 2024 10:00am	Liberty Winery 2861 US Route 20 Sheridan, NY 14135
July 10, 2024 10:00am	NO COFFEE POT MEETING
July 17, 2024 10:00am	Chateau Niagara Winery 2466 West Creek Rd. Newfane, NY 14108
July 24, 2024 10:00am	Grower Demo Day at CLEREL 6592 West Main Rd. Portland, NY 14769
July 31, 2024 10:00am	Mason Farms 8603 West Lake Rd. Lake City, PA 16423