



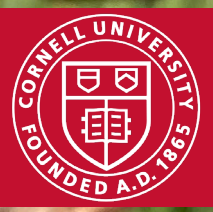
CROP UPDATE -May 23, 2024



Cornell Cooperative Extension
Lake Erie Regional Grape Program



Building Strong and Vibrant New York Communities
Diversity and Inclusion are a part of Cornell University's heritage. We are a recognized employer and educator valuing AA/EEO, Protected Veterans, and Individuals with Disabilities.



In this copy:

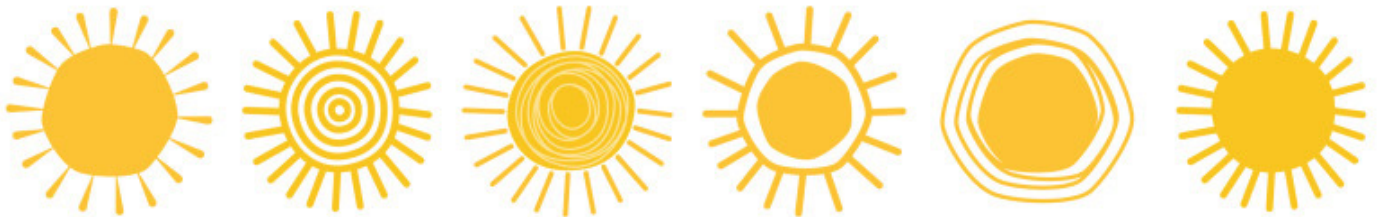
Resilient Food Systems Infrastructure Program – One Grant Open- Andrew Holden- [page 9](#)

In the Vineyard, MyEV, Events-Jennifer Russo- [page 11](#)

PA Update-Bryan Hed- [page 18](#)

NEWA- Kim Knappenberger- [page 20](#)

PA Pest Update, Banded Grape Bug & *Lygocorus inconspicuus*- Megan Luke- [page 21](#)



Jennifer Phillips Russo - LERGP Viticulture Specialist:

jjr268@cornell.edu

Cell: (716) 640-5350

Megan Luke –LERGP Penn State Extension Viticulture and Tree Fruit Educator

MFL5873@psu.edu

Cell:(716) 397-9674 Office:(814) 825-0900

Andrew Holden-LERGP Penn State Extension Business Management Educator

azh6192@psu.edu

716-792-2800 ext 202

Cell: 716-640-2656

Kim Knappenberger – Extension Support Specialist

ksk76@cornell.edu

716-792-2800 ext 209

Kate Robinson – Administrative Assistant

kjr45@cornell.edu

716-792-2800 ext 201

[Click here to
watch Podcasts](#)

The Lake Erie Regional Grape Program is a Cornell Cooperative Extension partnership between Cornell University and the Cornell Cooperative Extensions in Chautauqua, Erie and Niagara county NY and in Erie County PA.

Upcoming Events

May 29, 2024

10:00am- Coffee Pot Meeting
Kirk Hutchinson 4720 W. Main St.
Fredonia, NY 14063



June 5, 2024

[Register](#)

10:00am-2:00pm
LERGREC Field Day-
662 N. Cemetery Rd. North East PA 16428

June 6, 2024

[Register](#)

10:00am-3:00pm
Precision and Digital Viticulture Field Day @ CLEREL
6592 West Main Rd. Portland NY 14769

June 12, 2024

[Register](#)

10:00am-3:00pm
Betts Farms Soil Health and Climate Resiliency Field Day
7366 Route 20 Westfield, NY 14787

Need to meet with an LERGP team member?

It is meeting and field work season. The team is out of the office quite frequently, but available by appointment. Feel free to contact via phone or e-mail to set up a time to meet!

PROTECT YOUR CROP and your farm's bottom line.



Unpredictable weather like late frosts or summer hail storms can damage fruit crops. This can leave you with a total crop loss or damaged fruit you can't market.

Our Crop Growers specialists understand local weather and work with producers to develop a risk management plan that not only aligns with their risk tolerance but helps them meet their financial goals. When Mother Nature leaves a chilling effect across your region, we will make sure you're still standing after the thaw.

Our goal is to protect your investment.

Find out why we're the first choice for crop insurance.

800.234.7012 | CropGrowers.com

CROP GROWERS IS AN EQUAL OPPORTUNITY PROVIDER

LERGREC Field Day Meeting Agenda-

June 5th, 2024

10am-2pm

662 Cemetery Rd, North East, PA 16428

Register at

<https://lergp.cce.cornell.edu/>

This is a FREE
Event

A four-hour open house and meeting with one core credit in the morning and three category credits throughout the day providing growers with updated information and research in juice and wine grape production as well as best practices for pesticide application and precision agriculture methods in vineyards. Registration is free and lunch will be provided.

- **Sign-in and Welcome 9:45 AM**
- **Start: 10:00 AM (30 minutes) 1 core recertification credits**
 - **Title:** “Worker Protection Standard- What does compliance look like?”
 - **Speaker:** Joni Davis
 - **Description:** Inform-Protect-Mitigate the whole reason for the regulation is to make sure those who work for you know what they are being exposed to, how to protect themselves from that exposure and what to do if they are exposed to pesticides while working on the farm. During this talk you will learn what it takes to gain compliance and how to maintain it year after year.
- **10:40 AM (30 minutes) 1 category recertification credit**
 - **Title:** “Grape Disease Management Update”
 - **Speaker:** Bryan Hed
 - **Description:** Review of current grape disease development, potential grape disease threats for the remainder of the season, and recommendations as to how growers need to respond to those threats with the chemical and cultural disease control options available
- **11:20 AM (30 minutes for multiple options)**
 - **Booth 1**
 - **Title:** Spotted Lanternfly and Tree of Heaven Identification
 - **Speaker:** Dr. Flor Acevedo
 - **Description:** Hands-on demonstration booth with preserved specimens, with guidance on identification/management/scouting
 - **Booth 2**
 - **Title:** Business and Grant Programs
 - **Speaker:** Andrew Holden, Tom McClure, Ryan Nagoette
 - **Description:** LERGP Business management specialist Andrew Holden will be available to discuss upcoming regional business opportunities and Erie Conservation specialists will be available to talk about the process of applying to the PA VinES program
 - **Tour 1**
 - **Title:** LERGREG Research- Potato update
 - **Speaker:** Mike Campbell, Emily Dobry
 - **Description:** Walking tour to the LERGREG potato research grounds with updates on this new research
- **12:00 PM (Lunch)**

****see more on the next page**

- **12:50 PM (30 minutes) 1 category recertification credit**
 - **Title:** “Viticulture during bloom- nutrient sampling and best practices”
 - **Speaker:** Dr. Cain Hickey or Jennifer Philips-Russo
 - **Description:** Demonstration and practical tips for performing plant tissue sampling, overview of timing, and rationale.
- **1:20 PM (30 minutes) 1 category recertification credit**
 - **Title:** “Pest Identification in Vineyards”
 - **Speaker:** Megan Luke and Kim Knappenberger
 - **Description:** Walking demonstration of scouting and identification techniques for insects, diseases, and weeds in the LERGREC vineyards. Discussion of why to scout, mapping vineyards for precision pest management, and how to assess management strategy efficacy over time.
- **2:00 PM End**



Now in our 40th year, we have a tradition of providing quality products, education and superior service to both farm and home growers. Our products and spray programs are tried and tested in our own vineyards, ensuring you have a solid program for your own vineyard. We deliver products, programs and services to our customers in an efficient and personal way to enhance their growth and profit opportunities for the long term.

We are a proud dealer for -



PRODUCTS & SERVICES

- ☑ Herbicides, Fungicides & Insecticides
- ☑ Bulk & Bagged Fertilizer
- ☑ Soil and Petiole Testing
- ☑ Customized Pesticide and Fertilizer Programs
- ☑ Infaco, Felco and Bahco Shear and Lopper Repair
- ☑ Supplies for Trellis, Pruning, Tying and so much more!



Call us
716-679-1240



Visit our website
www.militellofarmsupply.com



Our location
2929 Route 39, Forestville

Precision and Digital Viticulture Field Day

Thursday, June 6th, 2024 | 10:00 am – 3:00 pm

Cornell Lake Erie Research and Extension Laboratory Regional Grape Program

6592 West Main Road

Portland, NY 14769

Register at

<https://lergp.cce.cornell.edu/>

This is a FREE
Event

10:00 – 10:10 **Welcome** – Jennifer Phillips Russo & Dr. Terry Bates

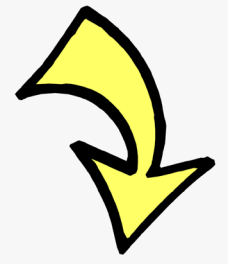
Research Updates

- 10:10- 10:25 **Drone Sensors** – Dr. Rob Chancia, Rochester Institute of Technology – Rob is working together to address vineyard nutrition through better monitoring techniques and guidelines for grape production across the nation and all grape markets. He will discuss his research as a part of this collaborative project conducted at the Cornell Lake Erie Research and Extension Laboratory.
- 10:25 - 10:40 **Hyperspectral Sensing Technology** - Kathleen Kanaley, Dr, Katie Gold Lab, Cornell University - Kathleen will update on her research with using satellite and drone imagery to develop remote sensing tools for early disease detection.
- 10:40 - 11:00 **Meet PPB & Research Update** – Dr. Yu Jiang, Cornell University – Yu will discuss his research utilizing the power of robotics and artificial intelligence to tackle major challenges facing farmers and drive a revolution in agricultural productivity and sustainability.
- 11:00 - 11:20 **Carnegie Mellon University Pruning Robots** – Dr. Abhi Silwal, Carnegie Mellon University – Abhi will present the design and field evaluation of a rugged and fully autonomous robot for end-to-end pruning of dormant season grapevines.
- 11:20 – 11:40 **Vision Spraying and Electric Weeding** – Dr. Lynn Sosnoskie, Cornell Weed Scientist – Lynn will update us on her research for sustainable programs that investigate other tools and technologies for controlling unwanted vegetation exploring non-chemical strategies for weed suppression including covering crops and mulches and vision-guided and electric weeders.
- 11:40 – 12:00 **Naio Ted Robotic Tool Carrier**– Chuck Baresich, Owner of Haggerty Creek – Chuck will be talking about the Naio Ted Robot and the potential use of robots to help improve efficiency in vineyards. Ted is the only autonomous straddle robot for vineyards with Augmented Autonomy. Perfect for mechanical weeding on the row.
- 12:00 – 1:00 **Lunch**
- 1:00 – 3:45 **Outdoor Demonstrations of Precision & Digital Tools**
- 3:45 – 4:00 **Closing Remarks** - Jenn Phillips Russo, LERGP

Betts Farms

Soil Health & Climate Resiliency Field Day

Wednesday, June 12th, 2024 | 10:00 am – 3:00 pm
7366 Route 20, Westfield, NY 14787



1.5 DEC Credits Available

This is a FREE event but you must register to help us plan for lunch.
[Register Here!](#)

Agenda

- 10:00 – 10:20 **Registration & Welcome**
- 10:20 - 10:40 **Our Soil Health Journey** – Bob Betts, Betts Farms
- 10:40 - 11:05 **Soil Health in Perennial Fruit Systems: why it matters** – Debbie Aller, Cornell University
- 11:05 - 11:35 **Cover Cropping in Concord Grape Trials** – Jenn Phillips Russo, CCE Lake Erie Regional Grape Program
- 11:35 – 12:00 **Cover Crop Options for Different Applications** – Rod Porter, Kings Agri-Seeds
- 12:00 – 12:45 **Lunch**
- 12:45 – 2:15 **Soil Pit** - Dan Ufnar, USDA-NRCS
- &**
- Soil Health Trailer and Demonstrations** – Debbie Aller and Michael Glos, Cornell University
(2 groups, rotate after 45 minutes)
- 2:15 – 2:45 **Roller Crimping in Concord Grapes (Demonstration)** – Bob Betts, Betts Farms
- 2:45 – 3:00 **Closing Remarks** - Jenn Phillips Russo, CCE Lake Erie Regional Grape Program

Cornell Cooperative Extension
Lake Erie Regional Grape Program



Cornell CALS
College of Agriculture and Life Sciences



Westfield

AG&TURF LLC

Andy Campell
General Manager

716-326-4671 • 7521 Prospect Rd • Westfield, NY 14787
www.westfieldagandturf.com

We Service What We Sell!

CASE IH

Cub Cadet

OXBO

YANMAR

2024 CLUB CAR

XRT 1550 4X4 UTILITY VEHICLE

STARTING AT
\$15,551

- ✓ 4X4
- ✓ AVAILABLE IN KAWASAKI 4-CYCLE ENGINE OR KUBOTA D722 DIESEL ENGINE
- ✓ INDEPENDENT DOUBLE A-ARMS WITH COIL-OVER SHOCK
- ✓ SEMI-INDEPENDENT, 4-LINK SOLID AXLE
- ✓ ONLY 58.5 INCHES WIDE, PERFECT TO FIT IN THOSE TOUGH PLACES
- ✓ POWER TILT BED
- ✓ COMES IN A CREW MODEL



FIND OUT MORE AT

DAVE WARREN POWERSPORTS IN WESTFIELD, NY

7540 US-20, WESTFIELD, NY 14787 | (716) 232-3030

WWW.DAVEWARRENMOTORS.COM

Business Management

Andrew Holden, Business Management Educator, Penn State University, LERGP

Resilient Food Systems Infrastructure Program – One grant open

The State of New York announced last week that one of the two Resilient Food Systems Infrastructure Program grants is open. The RFSI Infrastructure Grant is now open for applications through Friday, June 28 at 5pm. The State shared the Equipment Grant will be opened, likely in 2025. The equipment grant was the one we were recommending growers that wanted to purchase bulk harvest equipment apply for. The grant currently open, likely applies to processors and middle of supply chain entities. Please find information about the Infrastructure Grant that is open now, below:

From the Department of Agriculture and Markets (Click here for the grant webpage: <https://agriculture.ny.gov/resilient-food-systems-infrastructure-program>)

Infrastructure Grant

The RFSI Infrastructure Grant is now open for applications through **Friday, June 28 at 5pm.**

Infrastructure Grant Amount: \$100,000 - \$3,000,000.

The program requires cost sharing or matching of 50% of the project cost as a match to federal funding. For underserved farmers and ranchers, a reduced match contribution is required at 25% of the project costs.

Qualifying applicants for the Infrastructure Grant projects will self-certify their eligibility for the 25% reduced match.

Applications may be submitted through the FFGF secure portal: <https://ffgf.smapply.us/>

Applicants are invited to join the RFSI team at two open office hour events to ask questions about the program on **May 29 and June 12 at 12pm-1pm.** For more information and view a recorded webinar on program details and how to apply visit the Farm and Food Growth Fund: <https://www.ffgrowthfund.org/rfsi>

Eligible Activities

Eligible Activities include:

- Construction
- Hiring term-limited personnel to assist with project implementation activities.
- Purchasing special purpose equipment to benefit multiple producers through middle-of-the-supply-chain activities such as processing, aggregation, distribution or targeted agricultural product.
- Analyzing potential facility upgrades and changes to meet regulatory requirements, obtaining design and/or architecture services.
- Planning for Hazard Analysis Critical Control Points (HACCP) or other food safety or worker safety measures or equipment recommendations.
- Upgrades to new facilities for processing specific agricultural products, such as:
 - On-farm post-harvest processing, preservation, and storage/cold storage.
 - Post-harvest cleaning and grading.
 - Aggregator warehouse and storage, including cooperatives.
 - Purchase of freezing equipment, freezer, or cold storage.
 - Processing, canning, preserving and pasteurization.

- Preparation and packing.
- Drying, hulling, shelling and milling.
- Cooking, baking, juicing, distilling, fermenting
- Retail related activities can include creating distribution channels to new retail opportunities, or expanding processing and packaging capacities, including adding product types, increasing production volumes, and supporting new retail product lines.

I will keep updating everyone as we learn more about this program. Please reach out if you have any questions.

QuickBooks

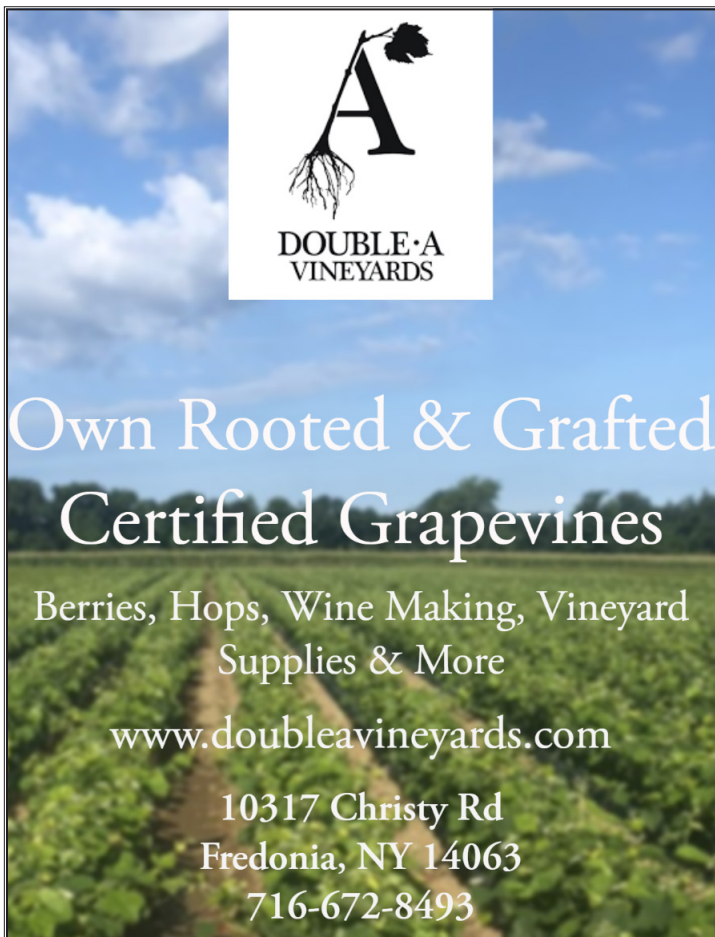
Do you use QuickBooks? Prices have increased recently, and some producers are looking for alternatives. If you are doing the same, check out this article from South Central NY Dairy & Field Crops Team: [The price of my accounting system just went up! What should I do?](#)

My contact information:

Mobile (call or text): (716) 640-2656

Office: (716) 792-2800

Email: AZH6192@psu.edu



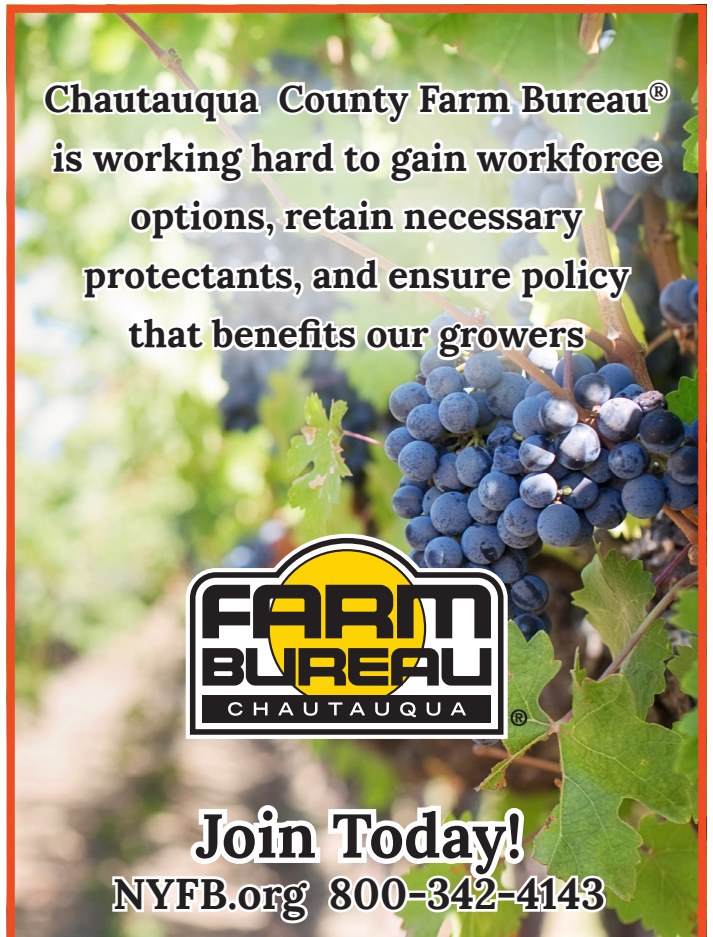
**DOUBLE·A
VINEYARDS**

**Own Rooted & Grafted
Certified Grapevines**

Berries, Hops, Wine Making, Vineyard
Supplies & More

www.doubleavineyards.com

10317 Christy Rd
Fredonia, NY 14063
716-672-8493



**Chautauqua County Farm Bureau®
is working hard to gain workforce
options, retain necessary
protectants, and ensure policy
that benefits our growers**

**FARM
BUREAU
CHAUTAUQUA®**

Join Today!
NYFB.org 800-342-4143

Viticulture

Jennifer Russo, Viticulture Extension Specialist, LERGP

In the Vineyard

Today is May 23, 2024, and the growing season has certainly been eventful for some of us in the belt. We have been discussing the frost/freeze event at the end of April for a month now. There have been many questions in our Coffee Pot Meetings about how one should manage this event moving forward. Unfortunately, that answer is the quintessential response of research and extension, 'it depends'. There are many factors that are unique to your operation that need to be taken into account. As a viticulturist, knowing that we are coming off two years of high yields on Concord vines, many of these vines in the belt went into this last winter with poor wood for this year. When monitoring cold hardiness last winter, the bud wood that was left up in some areas was weak and what we sometimes call paper-wood, that just didn't have the resources to harden off or survive. Given the frost/freeze situation, I would suggest taking this as an opportunity to build back your vine size. I would continue your fertilizer program, albeit you could dial it back if needed; many of you already have the materials in anticipation of a 'normal' season. Even if you are only farming tertiaries, it is important to keep your leaves clean to allow for photosynthesis to make the food that builds a strong root base and fruitful canes to support growth next year. We have also been asked about spray programs when farming mostly secondaries and some primaries. Protect your clusters, I realized that this year may not be ideal for some, but it is still important to protect the clusters/leaves that you have out there.

I have had some grower calls about seeing wild grape bloom near their vineyards. We call "Bloom" when 50% of the florets are open. Please see the wild grape clusters in the photo (Photo 1.). Please use this parameter when you are monitoring and be sure to use your Viticulture Planning Calendar to record data as a reference from year-to-year. Locust bloom and wild grape bloom are the most often referenced biofixes by growers and can typically be used to estimate grape bloom occurring in the next 10- to 14-days. There are some reports of Locust around the belt are starting to bloom. The occurrence of wild grape bloom as a biofix is also important for determining the start date for the Grape Berry Moth Phenology-based Degree Day model found on NEWA <http://newa.cornell.edu>. The bio-indicators put us in the range of June 3-6th, so be prepared for your immediate pre-bloom spray timing.



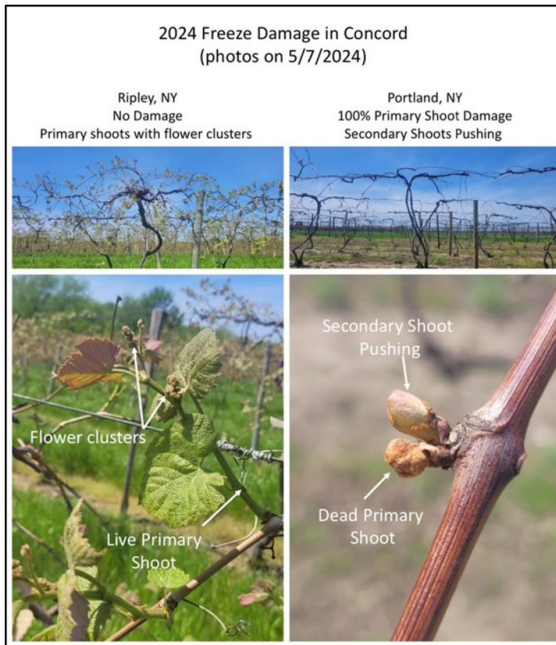
Photo 1. Wild grape clusters in bloom in Harbor Creek. Photo credit: Billy Richter

While the model has the ability to predict the biofix date for the start of the model, and has been pretty accurate most years, you have the ability to improve the accuracy of the model by plugging in the date wild grape bloom occurred in your various vineyard blocks. With many of the materials that are being used for grape berry moth these days, a few days here or there can have a big impact on

the effectiveness of the materials.

It is really important that we continue to map the extent of the damage. Please submit your damage to the survey below if you have not already or scan the QR code to take you to the survey:

[Click Here to Take the Survey](#)



MyEV

Assessing Vineyard Frost Damage with NDVI and MyEV

May 22

Written By [Terry Bates](#)

The Concord vineyards at the Cornell Lake Erie Research and Extension Laboratory experienced variable freeze damage in late April. In this video, Terry Bates uses a May 20th NDVI scan with some field validation measurements in a MyEV data collector to assess the damage and predict cluster counts across vineyard blocks.

[Click Here to Watch the Tutorial](#)

NEW HOLLAND
AGRICULTURE

Mahindra
TRACTORS

NEW HOLLAND
CONSTRUCTION

Turbo-mist

John BEAN

WOODS

LARRY ROMANCE & SON, INC.
Parts - Sales - Service

Come see us for all your Vineyard - Dairy - Construction & Consumers Needs

SHERIDAN, NY • 2769 ROUTE 20
(716) 679-3366 • tractorsales@netsync.net

ARCADE, NY • 543 W. MAIN ST.
(585) 492-3810

www.larryromanceandson.com



Figure 1. Screenshot of the Tutorial video by Dr. Terry Bates on Assessing frost damage 2024

Dr. Terry Bates has been busy documenting the Cornell Lake Erie Research and Extension Laboratory’s use of MyEV when readying for our new planting. He has recently posted more videos to demonstrate the power of precision and digital viticultural tools that you can use in your own operations. We will also be following up with a podcast series as well. This series is how to prep your land and soil sled sampling to look for the true soil pattern in the field to direct our soil sampling efforts to prepare for planting next season.

New Planting Series: #1 Soil Mapping

May 21

Written By [Terry Bates](#)

The Cornell Lake Erie Research and Extension Laboratory is getting ready to plant a new 5-acre research vineyard. Follow our process, from site prep to first harvest, in this New Planting Video series. We will address topics in traditional viticulture as well as integrating new technology and the MyEV spatial data platform. We kick off the video series by using various resources to map the vineyard soil and stratifying soil samples based on identified field patterns.

[Click Here to Watch the Tutorial](#)



Clover Hill Sales LLC

10401 Sidehill Road, North East, PA 16428

814-725-3102

sales@cloverhillsales.com

www.cloverhillsales.com



DURAND WAYLAND



WOODS
Woods Equipment Company



EDWARDS
EQUIPMENT COMPANY



TISCO



STOLTZFUS
SPREADERS

Harvester Parts and Belting
Southern Yellow Pine Posts
Tractor Tires & Tubes • And So Much More!



Figure 2. Screenshot of Tutorial - New Planting Series by Dr. Terry Bates

Precision and Digital Viticulture Tools Demonstration Day

On June 6, 2024, from 10 AM – 4 PM we will be hosting a Precision and Digital Viticulture Demonstration Day at the Cornell Lake Erie Research and Extension Laboratory with brief updates on the research behind the tools. Come and learn about tools and research that may be a part of our management in coming years. The agenda below is mostly confirmed. There will be demonstrations of drone sensing and other techniques to measure viticultural and soil data, robots to help gain that information and model it, and then robotics and variable rate machines that help manage with precision and digital techniques.

Precision and Digital Viticulture Field Day

Thursday, June 6th, 2024 | 10:00 am – 4:00 pm

Cornell Lake Erie Research and Extension Laboratory Regional Grape Program
6592 West Main Road
Portland, NY 14769

Artificial intelligence (AI), autonomous platforms, and novel pest management tools and strategies have the potential to dramatically alter grape production systems. This includes technology to assist with phenotyping and selection efforts, the detection and treatment of diseases, and the elimination of weeds under vine rows using fewer herbicides and less soil disturbance. On June 6th, Researchers at Cornell AgriTech will host Haggerty Ag Robotics/Naio Technologies and demonstrate the TED robot (Ted - Naio Technologies (naio-technologies.com)). We will also discuss the potential for autonomous tool carriers to assist with breeding and pest management efforts. The labs of Dr. Yu Jiang (Digital Agriculture), Dr. Katie Gold (Plant Pathology), and Dr. Lynn Sosnoskie (Weed Science) will also showcase their own research with respect to crop and disease mapping and using electrical weeders and targeted, precision sprayers to suppress unwanted vegetation. Drs Jiang, Gold, and Sosnoskie, as well as representative for Haggerty Creek Ag Robotics/Naio Technologies will take the opportunity to talk with stakeholders about current and future needs regarding novel technologies in perennial crops, which will help shape local, regional, and national research efforts.

Agenda

- 10:00 – 10:10 **Welcome** – Jennifer Phillips Russo & Dr. Terry Bates
- Research Updates**
- 10:10- 10:25 **Drone Sensors** – Dr. Rob Chancia, Rochester Institute of Technology – Rob is working together to address vineyard nutrition through better monitoring techniques and guidelines for grape production across the nation and all grape markets. He will discuss his research as a part of this collaborative project conducted at the Cornell Lake Erie Research and Extension Laboratory.
- 10:25 - 10:40 **Hyperspectral Sensing Technology** - Kathleen Kanaley, Katie Gold, Cornell University - Kathleen will update on her research using satellite and UAV images to map downy mildew and grapevine leafroll virus in the Finger Lakes.
- 10:40 - 11:00 **Meet PPB & Research Update** – Dr. Yu Jiang, Cornell University – Yu will discuss his research utilizing the power of robotics and artificial intelligence to tackle major challenges facing farmers and drive a revolution in agricultural productivity and sustainability.
- 11:00 - 11:20 **Carnegie Mellon University Pruning Robots** – Dr. Abhi Silwal, Carnegie Mellon University – Abhi will present the design and field evaluation of a rugged and fully autonomous robot for end-to-end pruning of dormant season grapevines.
- 11:20 – 11:40 **Vision Spraying and Electric Weeding** – Dr. Lynn Sosnoskie, Cornell Weed Scientist – Lynn will update us on her research for sustainable programs that investigate other tools and technologies for controlling unwanted vegetation exploring non-chemical strategies for weed suppression including covering crops and mulches and vision-guided and electric weeders.
- 11:40 – 12:00 **Naio Ted Robotic Tool Carrier**– Chuck Baresich, Owner of Haggerty Creek – Chuck will be talking about the Naio Ted Robot and the potential use of robots to help improve efficiency in vineyards. Ted is the only autonomous straddle robot for vineyards with Augmented Autonomy. Perfect for mechanical weeding on the row.
- 12:00 – 1:00 **Lunch**
- 1:00 – 3:45 **Outdoor Demonstrations of Precision & Digital Tools**
- 3:45 – 4:00 **Closing Remarks** - Jenn Phillips Russo, Lake Erie Regional Grape Program

2024 New York Soil Health Field Days Announced

Join the conversation on soil health and climate resilience at field days statewide

PUBLISHED ON MAY 21, 2024 <https://www.morningagclips.com/2024-new-york-soil-health-field-days-announced/>



New York Soil Health team member Michael Glos at the NY Soil Health Trailer, a mobile laboratory equipped with an interactive simulator showcasing the impact of rainfall on different soil types. Photo by Joseph Amsili / NYSH

WESTFIELD, N.Y. — The 2024 Soil Health and Climate Resiliency Field Days are poised to kick off again. Eleven events across the state will showcase practices for [soil health](#) and climate resilience in a variety of cropping systems. Organized by the New York Soil Health initiative in collaboration

with a consortium of regional partners and farms, these field days aim to provide attendees with actionable knowledge and innovative techniques.

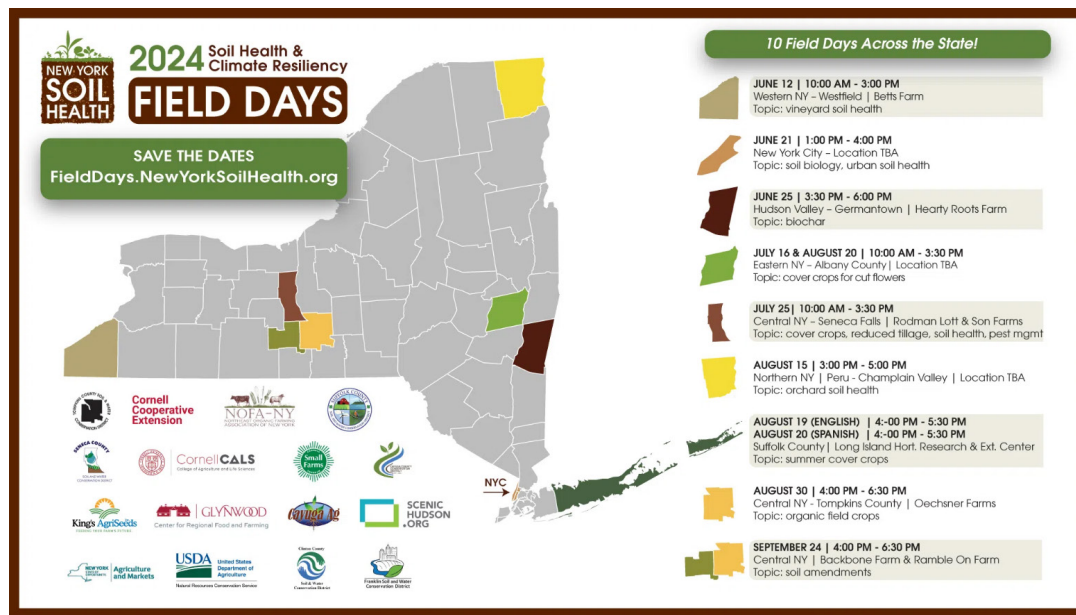
The series starts on **June 12** with a Vineyard Soil Health Field Day at Betts Farm in Westfield NY. Subsequent events include an Urban Ag Climate Workshop in NYC on **June 21**, a Biochar Field Day at Hearty Roots Community Farm in the Hudson Valley on **June 25**, and more throughout the summer and fall.

As part of this statewide initiative, attendees can expect a rich array of offerings from urban agriculture workshops to rural biochar and cover cropping demonstrations. Highlights include:

- Vineyard floor management
- Cover crop options for different cropping systems and seasons
- Discussions on sustainable weed management strategies
- Rotational grazing and silvopasture systems
- New York Soil Health Trailer demonstrations
- Panels featuring local farmers and agricultural experts
-

Hands-on learning opportunities and expert insights will be at the forefront, ensuring participants have the tools to enact positive change on their farms and communities. Attendees can network with peers, exchange ideas, and explore innovative solutions to pressing agricultural challenges. Collaborators and partners for the 2024 Field Day Series include Backbone Farm, Betts Farm, Cayuga Ag Enterprises, Cayuga SWCD, Cornell CALS, Cornell Cooperative Extension, Cornell Small Farms, Franklin SWCD, Glynwood Center for Regional Food and Farming, King's AgriSeeds, NYS Dept of Agriculture and Markets, NOFA-NY, Oechsner Farms, Propagate, Rodman Lott and Son Farms, Scenic Hudson, Tompkins SWCD, and USDA-NRCS.

For more information about each event, including locations, and to register, please visit fielddays.newyorksoilhealth.org.



JUNE 12
10 AM – 3 PM
 Vineyard Soil Health
 Western NY – Betts
 Farm
 7366 East Route 20,
 Westfield, NY 14787

Registration now open: https://lergp.cce.cornell.edu/event/preregistration_new.php?id=596

Figure 3. 2024 Soil Health & Climate Resiliency Field Days visual

FERTILEADER[®]
GOLD

Worth its Weight

TímaCal

Designed to Increase
Calcium Uptake

Contact us:

Michael Intrieri: 716 421-1785

Kayla Heineman: 718 714-8281

Laing-Gro Fertilizer: 716 992-3830

www.us.timacagro.com

 Tímac AGRO
USA



**YOU'RE GREAT AT FARMING.
WE'RE GREAT AT INSURANCE.**



BETTS
INSURANCE AGENCY

27 E MAIN STREET
WESTFIELD, NY

716 269 4322



NATIONWIDE[®] AGRIBUSINESS
On Your Side[®]
Farm Certified Agency

SHIELD YOUR
GRAPES

FROM POWDERY MILDEW WITH


TORINO[®]
FUNGICIDE

THE ONLY GROUP U6 FUNGICIDE


METTLE[®]
125 ME
FUNGICIDE

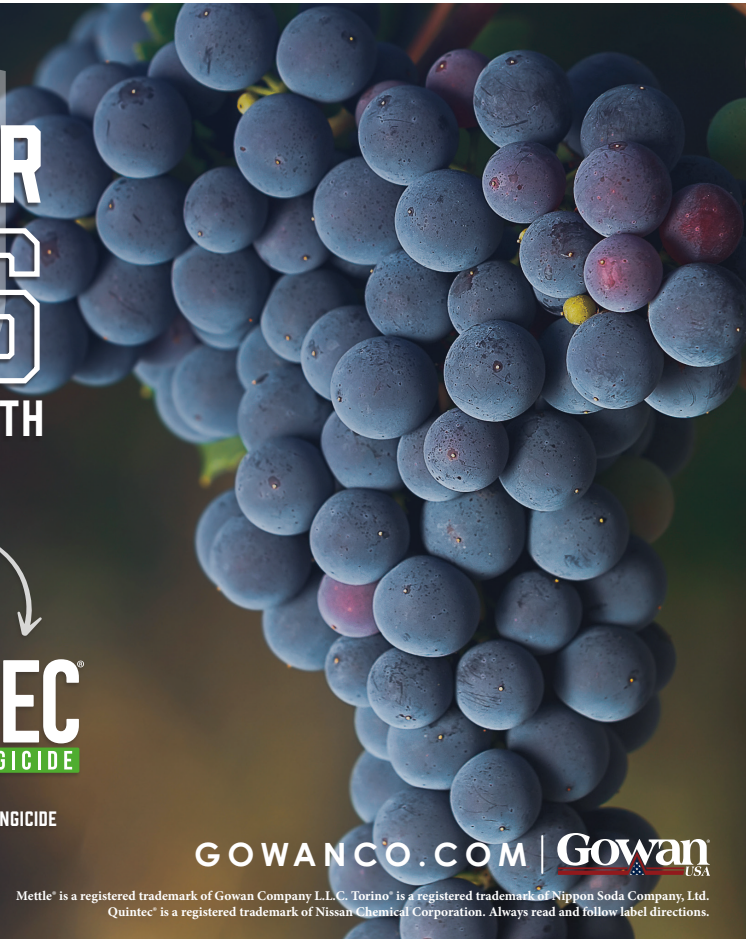
HIGHLY SYSTEMIC GROUP 3 FUNGICIDE


QUINTEC[®]
FUNGICIDE

THE ONLY GROUP 13 FUNGICIDE

GOWANCO.COM | 

Mettle[®] is a registered trademark of Gowan Company L.L.C. Torino[®] is a registered trademark of Nippon Soda Company, Ltd.
Quintec[®] is a registered trademark of Nissan Chemical Corporation. Always read and follow label directions.



PA Update

Bryan Hed, Research Technologist, Lake Erie Grape Research and Extension Center

Weather: So far, the month of May has been drier and warmer than average. Our May total rainfall is currently 1.48" (our long-term average for the month is about 3.77"). We have accumulated about 248 growing degree days (gdds) in May and about 362 gdds as of April 1, at our location. More rain is in the short term forecast for Saturday and Sunday.

Phenology and diseases: At our location by the lake, we are at the 5-6 leaf stage that marks the beginning of downy mildew season. In fact, we spotted downy mildew developing on a sucker shoot at our location on May 20, so the disease has been active for several days already, just waiting for more rain periods (like last night) to do its dirty work. Rainfall last night and this morning likely provided conditions for infection periods of Phomopsis, black rot, and powdery and downy mildew. Mancozeb or Captan applications at 3-6" and again at 10-12" shoots should have provided protection against Phomopsis, black rot, and downy mildew up to now. We have had several powdery mildew infection periods since bud break, so if you haven't put on a powdery mildew material yet, you will certainly need to add that to your next spray.

We should now be preparing for the immediate pre-bloom spray for all the major diseases. This spray and the first post-bloom spray are the most important sprays of the season for disease control, providing the vast majority of fruit protection for the year. Juice vineyards *heavily* damaged by late frost will warrant a more minimal disease management program this season but should still be centered on protecting the fruit around bloom with an immediate pre bloom and first post bloom spray. In damaged vineyards, I wouldn't scrimp on weed control, but rather focus on growing bigger vines this year (try to turn up something positive about having a small crop this season), for potentially bigger returns in future seasons.

For the vast majority of juice vineyards, mancozeb or captan will continue to provide the necessary protection against Phomopsis, black rot, and downy mildew, with no concerns for resistance development. For powdery mildew, it's time to start using the best materials we have (Gatten, Endura, Quintec, Cevya). It turns out that the prices of several of these materials are very reasonable this season...USE THEM AROUND BLOOM!!! Revus Top seems to be a popular choice for Niagara vineyards around bloom. Just be careful not to overuse this product as downy mildew resistance to Revus/Revus Top has been found in the Lake Erie region and in many other places. One more caution: do not mix Cevya with stilet oil. This combination has been shown to burn leaves on Concord grape. However, we have not tested this combination on wine grapes.

And speaking of wine varieties, now is the time to plan using the biggest guns we have for powdery mildew. This may include materials like Luna Experience, Aprovia Top, or Gatten. These materials should be tank mixed with sulfur for use on varieties that are tolerant of sulfur. Spare no expense with regard to protection from other diseases as well and look for some of the best products for control of black rot, Phomopsis, and downy mildew (Luna Experience and Aprovia Top mentioned above will also provide black rot control, however you will need to augment the tebuconazole in Luna to get good black rot control). Mancozeb products are great materials to couple with something like Revus, Ranman, Zampro, or Ridomil Gold MZ/copper for extra downy mildew control during early fruit development. If you use a product like Revus Top or Aprovia Top, the difenoconazole in these products (along with a tank mix of mancozeb) will do an excellent job of controlling black rot. The mancozeb will also provide continued control of Phomopsis.

Do not rely on strobilurin fungicides any longer, for powdery and downy mildew control. These are strictly black rot materials now (and maybe Phomopsis too). Strobilurin resistance by the powdery and downy mildew pathogens is considered widespread and this class of fungicides should not longer be relied upon for control of these two diseases, especially around bloom.

This time of year is also a good time to be scouting for the effects of *Eutypa*, when the stunted, yellow/chlorotic shoots of canes, branches, and arms affected by *Eutypa*, are most easily seen. Eventually, *Eutypa* affected branches will die and will need to be removed. Damage from some herbicides can appear similar on shoots and leaves, but *Eutypa* often affects only some parts of a vine...not the whole vine. Vines affected by *Botryosphaeria* canker can show similar symptoms but are caused by a different group of fungal wood pathogens. You may not have time to prune these infected vine parts out at this busy time but flagging these shoots now will enable you to come back later and do the necessary pruning work to remove affected wood. Prune off at least 6" back from the infected (dead or discolored) wood into healthy wood. Once removed, infected wood should not be left in the vineyard where the pathogen within can release more spores and spread. Rather, it should be removed from the vineyard and burned.



NORTH EAST FRUIT GROWERS

2297 KLOMP ROAD, NORTH EAST, PA 16428

814.725.3705

nefruitgrowers.com

nefruitgrowers@verizon.net

OPEN YEAR-ROUND MONDAY - FRIDAY 8AM - 5PM

OPEN SATURDAYS APRIL- NOVEMBER 8AM - NOON

BULK FERTILIZER
BAGGED FERTILIZER
CHEMICALS
VINEYARD SUPPLIES
ORCHARD SUPPLIES
PRUNING SUPPLIES
GLOVES & BOOTS
POND PRODUCTS
PRODUCE PACKAGING
HOME OWNER SUPPLIES
& SO MUCH MORE!

DRYSHOD
WATERPROOF FOOTWEAR



ORIGINAL
LOWE

FELCO
SWISS  MADE



CORONA

SEASON AFTER SEASON

Updates and Information

Kimberly Knappenberger, Extension Support Specialist, LERGP

NEWA

Here we go! Here at CLEREL in Portland, NY it looks like the NEWA model for Grape Berry Moth kicked off yesterday. This model is based on an estimate of wild grape bloom based on degree day accumulations in the area of the weather stations. To make this model work best for you it is recommended that you note when wild grape bloom occurs near your vineyards (as Jennifer mentioned above). To find the model go to newa.cornell.edu and enter your station into the station search bar. Scroll down to the IPM & Crop Tools section and click on Grape Berry Moth as highlighted below.

IPM Forecasts and Weather Data
Get started by selecting your nearest weather station.

Select or search by weather station
Portland, NY

Click or tap on a station marker to load its overview

Portland Overview
Courtesy of Lake Erie Regional Grape Program

At 10:00 AM today
70 °F
Base 50°F Degree Days since January 1: 423
Relative Humidity: 56 %
Dew Point: 53.6 °F
Wind Speed: 4.6 mph

Yesterday
Precipitation: 0.15 in High Temp: 83 °F Low Temp: 67 °F

Today as of 10:00 AM
Precipitation: 0.02 in High Temp: 70 °F Low Temp: 60 °F

5-Day Weather Forecast

Thursday	Friday	Saturday	Sunday	Monday	Tuesday
5/23/2024	5/24/2024	5/25/2024	5/26/2024	5/27/2024	5/28/2024
71 60	74 60	77 59	76 61	75 62	68 58

IPM & Crop Tools
All Tools →

Pollen Tube Growth Model Carbohydrate Thinning **Grape Berry Moth**
Grape Diseases Cabbage Maggot Beet Ceroospora Leaf Spot

Weather Tools
All Tools →

About Weather Stations DD Calculator Buy a Weather Station
Weather Data Query Regional Radar Drought Monitor

That will take you to the model page. At this point you can change the wild grape bloom date if it doesn't line up with what you have found. The chart below shows the degree days. To follow the Grape Berry Moth model be sure to watch the base 47.14°F accumulated column as highlighted.

NEWA
WATCH TUTORIAL

All Stations
Portland, NY

Date of Interest
May 2024
2024
Su Mo Tu We Th Fr Sa
28 29 30 1 2 3 4
5 6 7 8 9 10 11
12 13 14 15 16 17 18
19 20 21 22 23 24 25
26 27 28 29 30 31 1
2 3 4 5 6 7 8

Results for Portland, NY
Latitude: 42.39 Longitude: -79.49 Elevation: 739 ft
Courtesy of Lake Erie Regional Grape Program
Last download: 5/23/2024, 10:00 AM

Wild Grape Bloom
05/22/2024

Wild Grape Bloom date above is estimated based on degree day accumulations or user input. Enter the actual date for blocks of interest and the model will calculate the results more accurately.

Accumulated degree days (base 47.14°F SA) wild grape bloom through 5/23/2024: 47

Results Table
Download CSV

DATE (2024)	Degree Days			
	Base 59°F BE		Base 47.14°F HI	
	DAILY	FROM JAN 1	DAILY	FROM MAY 22
May 21	25	436	N/A	N/A
May 22	25	461	28	28
May 23 Forecast	15	477	19	47

Show/Hide
Station Selection Map
Results Table
Management Guide

As a reminder from the Management Guide below this chart, the first generation of grape berry moth larvae are hatching and beginning feeding. Grape berry moth will not be at significant population levels except in the highest risk vineyards. An insecticide included with the immediate postbloom fungicide application may be beneficial in vineyards experiencing significant crop loss from grape berry moth on a yearly basis. For most vineyards it is customary to wait until you are closer to 810 DD to apply insecticides as indicated from scouting.

PA Update

Megan Luke, Penn State Extension Viticulture and Tree Fruit Educator

At 3"-5" shoot growth stage in vineyards, it's important to start expanding scouting efforts from flea beetle and cutworm to plant bugs, including the banded grape plant bug and *Lygocorus inconspicuus*. These insects are typically found in vineyard areas that are bordered by woodlands.

Banded Grape Bug & *Lygocorus inconspicuus* – Plant bug nymphs emerge in the spring from overwintering eggs. Nymphs are small (1/8 -1/4 inch) and difficult to see in flower clusters. Banded grape bug nymphs are green with brown colored wing pads and antennae with alternating black and white segments (Figure 1). *Lygocorus inconspicuus* nymphs are light green and smaller than BGB nymphs (Figure 2). Both types of nymphs have piercing - sucking type mouthparts and feed on flower pedicels and florets in a cluster. Feeding can result in floret drop, reduced berry set and fewer clusters. Scout for these insects by examining flower clusters on about 100 shoots in different areas in the vineyard. These insects are often found near vineyard edges and may not be widespread throughout the vineyard. Treatment threshold to prevent economic loss is 1 nymph per 10 shoots.

The easiest method of scouting these insects is to tap flower clusters over a paper plate and count the nymphs that fall off, using an optical magnifier can aid in identification. Only the nymphal stage of these insects is harmful in grapes.

Banded Grape Bug identification and scouting technique: [video](#)

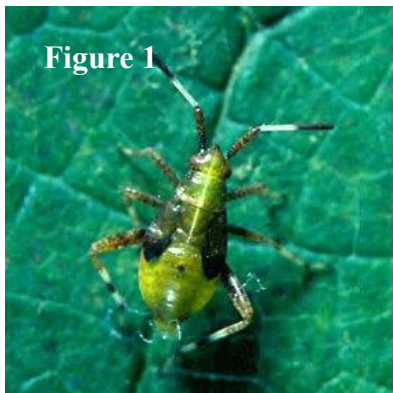
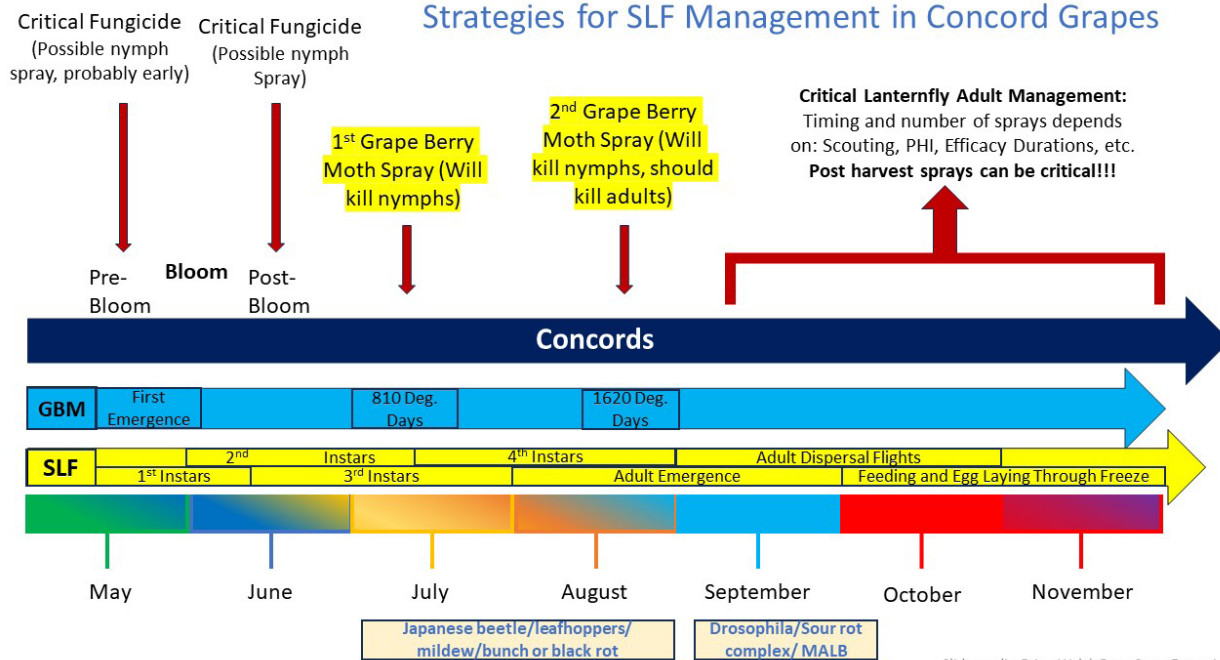


Photo Credit: Joe Ogradnick, Cornell University, courtesy Greg Loeb

Photos courtesy of Cornell IPM, Joe Ogradnick and Greg Loeb

Several people have requested the phenology slide for spotted lanternfly and grape berry moth in concord grapes, please find it below. Please note- the key take-away here is that our standard management practices for insects in our vineyards will manage SLF nymphs and early adults. Primary management for vine protection from SLF will occur immediately pre- and post-harvest and may require an additional one to two spray applications. The information in this slide is subject to change as additional research becomes available. Additional information can be found in the Pocket Guide to SLF (available at Coffee Pot Meetings and at the CLEREL facility).

Strategies for SLF Management in Concord Grapes



Slide credit: Brian Walsh Penn State Extension

New Webinar Series for PA Growers:

Updates in Pennsylvania Vineyards: May - Prebloom

When: May 30, 2024
(12:00 PM-1:00 PM ET)

Registration deadline: May 30, 2024
12:00 p.m.

About the Live Webinar

Join us virtually for the May session of our ongoing meeting series, Updates in Pennsylvania Vineyards: Prebloom. Whether you're a seasoned vintner, an aspiring wine enthusiast, or simply curious about viticulture, this event is tailored to deepen your understanding of the unique challenges and opportunities presented during the prebloom stage. Discover the latest insights and trends shaping Pennsylvania's vineyards from the comfort of your home and gain invaluable knowledge to enhance your approach to vineyard management.

Event Details

Join us for a series of one-hour Zoom meetings, held monthly from May through August, covering the various phases of the vineyard season. This will be in a meeting format (not a webinar) and allow for more dialogue and engagement to receive updates from others in attendance at the meeting.

- This event is free of charge for all registrants.

- Registration is required to receive the link to access the webinar.
- Registrants will also receive access to the webinar recording.

Printed copies of the 2024 NY and PA Pest Management Guidelines for Grapes have been ordered and should be in next week at some point. I will keep you informed of when those become available and will do my best to get those in your hands as quickly as possible. I will post my office schedule and bring copies to Coffee Pot Meetings as needed once I have them.

Contact information:

Mobile (*call or text*): (716) 397-9674

Office: (814) 825-0900

Email: MFL5873@psu.edu



Farmers | Farm Families | Agribusiness

- Financial analysis
- Personal well-being
- Mental Health & Stress
- Retirement and estate planning
- Family business relationships
- Communication
- Business planning

100% free, 100% confidential
Call 1-800-547-3276

Cornell CALS
College of Agriculture and Life Sciences

Dyson
Cornell
SC Johnson College of Business

KEEP YOUR FARMING OPERATION FINANCIALLY HEALTHY

Crop insurance offers a lot of choices. Which protection is right for your business?

Contact your local Rain and Hail agent to get your crop insurance consultation before it is too late.

Sales closing date is November 20!

For details contact:

GEORGE HAFFENDEN

716.725.7840

ghaffenden@american-national.com

Rain and Hail

A Chubb Company

This institution is an equal opportunity provider and employer.



2024 LERGP Coffee Pot Meeting Schedule

May 1, 2024 9:00am	SLF Meeting- Burch Farms 9210 Sidehill Rd. North East, PA 16428
May 8, 2024 10:00am	Sprague Farms 12435 Versailles Rd. Irving NY 14081
May 15, 2024 10:00am	Brian Chess Farm 10289 West Main Rd. Ripley NY 14775
May 22, 2024 10:00am	Schulze Vineyards & Winery 2090 Coomer Rd. Burt, NY 14028
May 29, 2024 10:00am	Kirk Hutchinson 4720 W. Main St. Fredonia, NY 14063
June 5, 2024 10:00am	LERGREC Field Day 662 N. Cemetery Rd, North East, PA 16428
June 12, 2024 10:00am	Betts' Farm- Soil Health Day 7366 East Route 20 Westfield, NY 14787
June 19, 2024 10:00am	NO COFFEE POT MEETING
June 26, 2024 10:00am	Zach & Alicia Schneider 771 Bradley Rd. Silver Creek, NY 14136
July 3, 2024 10:00am	Liberty Winery 2861 US Route 20 Sheridan, NY 14135
July 10, 2024 10:00am	NO COFFEE POT MEETING
July 17, 2024 10:00am	Chateau Niagara Winery 2466 West Creek Rd. Newfane, NY 14108
July 24, 2024 10:00am	Grower Demo Day at CLEREL 6592 West Main Rd. Portland, NY 14769
July 31, 2024 10:00am	Mason Farms 8603 West Lake Rd. Lake City, PA 16423