



# Cornell Cooperative Extension

## Finger Lakes Grape Program

January 25th, 2023

### Finger Lakes Vineyard Update

#### Bud Hardiness Update

As I wrote last week, bud hardiness levels are looking pretty reasonable for this point in the winter, especially given the fact that we haven't had much in the way of unusually cold temperatures in 2023 so far. The measured bud hardiness data on the newly revamped [winter hardiness website](#) that I described last week is all collected from vineyards near Geneva, but we are still collecting samples from other locations in the Finger Lakes as well. The table below has LTE data based on samples collected from several different locations in the region.

Variety	Location	LTE <sub>10</sub>	LTE <sub>50</sub>	LTE <sub>90</sub>
Cabernet Franc	E Keuka	-4.9	-8.3	-11.9
Cabernet Franc	W Seneca	-4.4	-6.7	-10.3
Cayuga White	E Keuka	-6.9	-10.7	-12.4
Cayuga White	W Keuka	-4.4	-9.9	-14.4
Concord	E Keuka	-7.7	-12.3	-16.7
Concord	W Canandaigua	-12.6	-17.1	-19.1
Concord	W Keuka	-12.8	-16.8	-18.2
Lemberger	Wayne County	-6.3	-8.0	-10.9
Riesling	E Keuka	-7.3	-9.7	-11.3
Riesling	Wayne County	-8.1	-11.4	-13.2
Riesling	W Canandaigua	-7.4	-10.0	-12.9
Riesling	W Keuka	-11.1	-12.1	-13.2
Riesling	W Seneca	-7.6	-10.7	-12.8

#### In This Issue:

Bud Hardiness	pg. 1
B.E.V. NY Program	<a href="#">pg. 2</a>
Vineyard Mapping	<a href="#">pg. 5</a>
Enrollment	<a href="#">pg. 6</a>
EVEF Webinars	<a href="#">pg. 7</a>
Ag Census	<a href="#">pg. 8</a>
Vineyard Survey	<a href="#">pg. 9</a>
Events	<a href="#">pg. 11</a>

I also wanted to mention that Don Caldwell has created another Google spreadsheet for growers to input any bud injury numbers that they come up with as they're doing their own checks as well. The link for the spreadsheet is <https://tinyurl.com/3s9s3ewx>. There are separate data sheets for Cab Franc, Chardonnay, Gewürztraminer, Lemberger, Pinot gris, Pinot noir, and Riesling, plus one for other varieties. If you do any bud cutting this winter, we would appreciate getting information about what you find.

### B.E.V. NY 2023 Program Now Available

REGISTER TODAY AT <https://www.bevny.org/register>



The program for this year's B.E.V. NY conference is now available at <https://www.bevny.org/schedule>. As mentioned earlier, instead of having each day focused on one specific topic – business, enology, or viticulture – there will be business, enology and viticulture tracks on each day of the conference, so there will be a lot of options to choose from.

Registration is now open at <https://www.bevny.org/register>, and I encourage everyone to do so before the early bird deadline, which is *next Tuesday, January 31*. Whether you choose to attend in person or virtually, there will be a lot to take in during these three days.

Here are short summaries of this year's viticulture program sessions:

#### **Tuesday, March 28**

*Session title: Soil Health A*

*Speakers: Justine Vanden Heuvel, Cornell University  
Amelie Gaudin, UC-Davis*

Healthy soils are able to provide critical functions for crops and the environment while lowering input needs. This session will discuss how regenerative practices like improving microbial diversity and livestock re-integration can impact soil ecosystems, their ability to store carbon, and the sustainability and resilience outcomes in vineyards

*Session title: Soil Health B*

*Speakers: Robert Schindelbeck, Director – Cornell Soil Health Lab  
Thijs Verschuren, H.J. Wiemer  
Bob Betts, Betts Vineyards  
Jennifer Russo, Lake Erie Regional Grape Program*

Many of us have an idea of what soil health is, but can it actually be measured, and in turn, managed? When it comes to soil health, Cornell has an important tool to measure various physical, chemical and biological factors that are associated with healthy soils. And one of the most effective ways to manage soil health in agricultural systems is with cover crops. This session will bring some experienced voices together to discuss this.

*Session title: The Path to New Grape Varieties in New York*

*Speakers: Bruce Reisch, Cornell University  
Anna Katharine Mansfield, Cornell University*

The approaching retirement of Dr. Bruce Reisch, who has led Cornell's grape breeding program for over 40 years, gives us a chance to take a look at the progress that has been made in developing new grape varieties that are better adapted to an ever-changing environment. The session will include a tasting of a few selections from the Cornell program, including NY81.0315.17, which will have its new name announced during B.E.V. NY!

### B.E.V. NY 2023 Program Now Available (continued from pg. 2)

---

#### **Wednesday, March 29**

*Session title: Pest Management Updates*

*Speakers: Katie Gold, Cornell University*

*Greg Loeb, Cornell University*

*Brian Eshenaur, NYS IPM Program*

Growers in New York need to stay on top what's happening in the world of pest management. New techniques, new products, and even new pests are hard to keep up with, but fortunately this session features important updates on all of these from some trusted and well-known people to New York growers (NY pesticide recertification credits will be available to both in-person and virtual attendees).

*Session title: Pest Management Technology*

*Speakers: Lynn Sosnoskie, Cornell University*

*Jason Deveau, Ontario Ministry of Agriculture, Food and Rural Affairs*

While it's important to keep up on the best materials and practices to control pests, the equipment that one uses can be just as important for an effective pest management program. Our speakers will walk growers through the important information they need to know to keep their sprayers running at peak performance, as well as introducing some newer technologies that could be appearing in vineyards in the near future (NY pesticide recertification credits will be available to both in-person and virtual attendees).

*Session title: Measuring and Managing Cold Hardiness in Grapevines*

*Speakers: Jason Londo, Cornell University*

*Hongrui Wang, Cornell University*

*Jim Willwerth, Brock University*

There are many challenges to growing grapes in the northeastern U.S., but one of the biggest might be adapting our vineyards and practices to improve vines' ability to survive winter conditions, which are undergoing significant change and becoming increasingly unpredictable. This session will talk about new information and tools available to growers to do just that.

### B.E.V. NY 2023 Program Now Available (continued from pg. 2)

#### **Thursday, March 30**

*Viticulture Keynote: Better Vineyard Measurements, Better Vineyard Management*  
*Speaker: Mark Greenspan, Advanced Viticulture, Inc.*

In vineyards, it seems there's an almost limitless list of data that you could collect – yield, cluster and berry weight, phenology dates, pruning weight, plant and soil nutrients, and on and on. Not to mention all the sensors and the internet of things as well. Are there some of these data, though, that can give growers a bit more “bang for the buck” when it comes to some of the management decisions that need to be made? Our speaker, Mark Greenspan, has collected all sorts of data in his clients' vineyards over the years, and will talk about how he thinks about the data he collects and how he and his clients use it to improve their decision-making.

*Session title: Vineyard Data: Lo-Tech & "Mid-Tech" Approaches*  
*Speakers: Terry Bates, Cornell University*  
*Hans Walter-Peterson, Cornell Cooperative Extension*  
*Brent Sams, E&J Gallo*

There has been a lot of progress in developing new, hi-tech methods of data collection in vineyards, like remote sensing from satellites and drones, using complex GIS mapping software to visualize vineyard conditions, or sensors that can measure brix or volatile compounds out in the field. All of that can feel overwhelming and too far above our heads to use on the farm. But there are still plenty of lo-tech and “mid-tech” approaches to gathering and understanding important information from the vineyard that growers can easily implement in their vineyards right now.

*Session title: MyEV Workshop*  
*Speakers: Terry Bates, Cornell University*  
*Hans Walter-Peterson, Cornell Cooperative Extension*  
*Nick Gunner, Orbitist*

The Efficient Vineyard project is an ongoing national effort to advance the use of precision viticulture in wine, juice, and table grape production. One of the most important tools that has emerged from that project is the My Efficient Vineyard mapping platform (MyEV), which lets growers easily and quickly apply any kind of spatial data to a map using a simple interface. This afternoon's session will provide growers with an introduction to the MyEV system and help them get started with this powerful yet easy-to-use tool. The workshop will be appropriate for growers who are new to MyEV as well as those who have had some experience using the system already. This will be a hands-on workshop, so growers should bring their own laptops or tablets to work on.



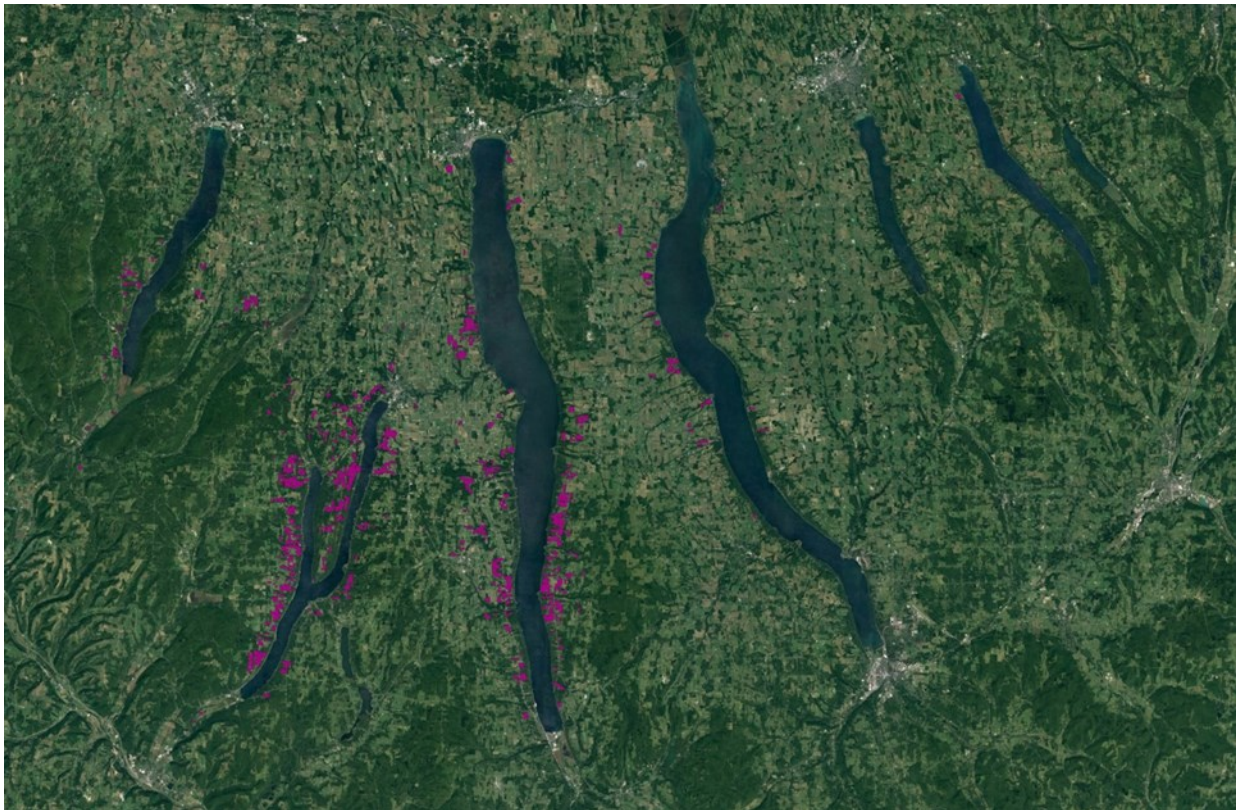
### GIS Vineyard Mapping

---

I am really pleased to announce that Ellen Coyne is once again working with us this winter on updating our GIS map of Finger Lakes vineyards. If you have not had your vineyard mapped in the past, or it's been a while, or you have recently planted some new blocks, please get in touch with Ellen to make an appointment with her to get your information into our maps.

We use these maps to give us a bigger picture of the Finger Lakes grape industry, from acreage numbers to trends in locations and cultivar plantings. As we move into doing more in the area of digital viticulture, these maps will also help to enhance that work as we can see how different spatial patterns in the environment might be influencing production or fruit quality.

You can contact Ellen by email at [ellencoyne@yahoo.com](mailto:ellencoyne@yahoo.com) to arrange a time to meet with her.



### Don't Forget to Enroll in the Grape Program for 2023

Be sure to sign up for the Finger Lakes Grape Program for 2023. For several years, the FLGP managed this process on behalf of the county associations, but the process is back in the hands of the individual county Extension offices now, as they are the ones who require this for their growers. Growers should have received enrollment forms or notices from their local Extension office in December or January (or maybe earlier).

The enrollment process for ag extension programs in New York is unique in that it is the only one in the country (that I am aware of) that requires farmers to pay to be on our mailing list and receive information from us, which in the case of the FLGP is mostly through our Vineyard Update and Veraison to Harvest newsletters, and other emails. It's not something that the FLGP requires, but rather the counties that we serve require this of their growers. The annual fees that growers send to enroll in the Grape Program are used by the county Extension offices to help offset some of the funding that they give the FLGP each year. The amount of that enrollment fee is set by each county, so they are not the same for every grower in the Finger Lakes. Enrollments from growers or others outside of our six counties go directly to the FLGP.

If you have not submitted your enrollment and payment for 2023, or if you're not sure if you have, please contact your local Extension office (contact information is below).

<u>CCE-Ontario County</u> 480 North Main Street Canandaigua, NY. 14424 (585) 394-3977 <a href="http://cceontario.org/agriculture/ag-enrollment">http://cceontario.org/agriculture/ag-enrollment</a> Enrollment Fee: \$75	<u>CCE-Steuben County</u> 20 East Morris Street Bath, New York 14810 (607) 664-2300 <a href="http://putknowledgetowork.org/agriculture/regional-agriculture-programs">http://putknowledgetowork.org/agriculture/regional-agriculture-programs</a> Enrollment fee: \$0 <i>Steuben County CCE has eliminated their fee for ag extension enrollment</i>
<u>CCE-Schuyler County</u> Schuyler County Human Services Complex 323 Owego Street, Unit #5 Montour Falls, New York 14865 (607) 535-7161 <a href="http://cceschuyler.org/">http://cceschuyler.org/</a> Enrollment fee: \$75	<u>CCE-Wayne County</u> 1581 Route 88 North Newark, NY 14513 (315) 331-8415 <a href="http://ccewayne.org/agriculture/ag-specialist-teams">http://ccewayne.org/agriculture/ag-specialist-teams</a> Enrollment fee: \$65
<u>CCE-Seneca County</u> Main Street Shop Centre, Ste #308 Waterloo, New York 13165 (315) 539-9251 <a href="http://senecacountycce.org/agriculture/finger-lakes-grape-program-enrollment">http://senecacountycce.org/agriculture/finger-lakes-grape-program-enrollment</a> Enrollment fee: \$75	<u>Out-of-Area Enrollment</u> <i>(outside of the six counties listed)</i> CCE-Yates County 417 Liberty Street Penn Yan, NY 14527 (315) 536-5123 Enrollment fee: \$130
<u>CCE-Yates County</u> 417 Liberty Street Penn Yan, NY 14527 (315) 536-5123 <a href="http://yates.cce.cornell.edu/">http://yates.cce.cornell.edu/</a> Enrollment fee: \$75	

### Eastern Viticulture and Enology Forum

---

We have been working with viticulture and enology colleagues from Penn State and Virginia Tech Universities to develop this winter's Eastern Viticulture and Enology Forum. The Forum consists of a series of webinars focused on a range of viticulture and enology topics. Below is the information about the remainder of this year's viticulture webinars:

#### February 7, 2023

*Academic and industry perspectives on biofungicide use in vineyards*

- Kaitlin Gold - Assistant Professor of Grape Pathology, Cornell AgriTech, [kg577@cornell.edu](mailto:kg577@cornell.edu)
- Mizhuo Nita - Associate Professor of Grape Pathology, Virginia Tech, [nita24@vt.edu](mailto:nita24@vt.edu)
- Karl Hambsch - Co-owner and Vineyard Manager, Loving Cup Vineyard and Winery, [info@lovingcupwine.com](mailto:info@lovingcupwine.com)
- Paul Brock - Co-owner, Silver Thread Vineyards, [paul@silverthreadwine.com](mailto:paul@silverthreadwine.com)
- John Santos – Vineyard Manager, Hazlitt 1852 Vineyards, [john@hazlitt1852.com](mailto:john@hazlitt1852.com)

Registration: <https://extension.psu.edu/academic-and-industry-perspectives-on-biofungicide-use-in-vineyards>

#### March 7, 2023

*Climate change implications for grapevine production in wine regions of the United States*

- Greg Jones – CEO, Abacela Winery, [climateofwine@gmail.com](mailto:climateofwine@gmail.com)

Registration: link coming soon



### The 2022 Census of Agriculture is Underway

### The deadline to submit your information is February 6, 2023!

Last month, the USDA mailed survey codes for responding securely online to the 2022 Census of Agriculture at [agcounts.usda.gov](https://agcounts.usda.gov). Your unique survey code will get you started with the online response option that offers time saving features that are ideal for busy grape producers.

By completing the 2022 Census of Agriculture, you tell your story and help generate comprehensive and impartial agriculture data for New York that better serve you and future generations of producers.

“Grape production has an incredible impact on New York. I want to thank producers in advance for responding to the ag census” said Donnie Fike, New York State Statistician of USDA’s National Agricultural Statistics Service (NASS), "We recognize how valuable their time is, so we have made responding more convenient and modern than ever."

To learn more about the Census of Agriculture, visit [nass.usda.gov/agcensus](https://nass.usda.gov/agcensus) or call 800-727-9540. On the census web page, producers and other data users can access frequently asked questions, past ag census data, [partner tools](#) to help spread the word about the ag census, special study information, and more. For highlights of these and the latest information on the upcoming Census of Agriculture, follow USDA NASS on Twitter @usda\_nass and search #AgCensus.

###

*NASS is the federal statistical agency responsible for producing official data about U.S. agriculture and is committed to providing timely, accurate and useful statistics in service to U.S. agriculture.*





### WineAmerica Gets Vineyard Survey Breakthrough

*Press Release from WineAmerica*

WASHINGTON, DC—WineAmerica, the National Association of American Wineries, is pleased to report major early progress on one of its top 2023 policy priorities: A national vineyard acreage survey covering all 50 states.

The breakthrough came as part of the massive \$1.7 trillion Omnibus spending bill passed by Congress on December 23 and signed into law by President Biden. The exact language: “The agreement encourages NASS to reinstate the 5-year Vineyard and Orchard Acreage Study and resume data collection and reporting so grape, wine, and juice producers can remain competitive and respond to challenges in the industry.”

NASS is the National Agricultural Statistics Service of the United States Department of Agriculture which used to conduct such surveys until budget cuts eliminated them over a decade ago. Two recent National Economic Impact Surveys of the Wine Industry sponsored by WineAmerica demonstrated the vital need to reinstate them.

“We are delighted at this step, and deeply grateful to Senate Majority Leader Chuck Schumer for including this language in the bill,” said Jim Trezise, WineAmerica’s President. “When we met with him in the Finger Lakes in early December, he immediately understood the importance of this as a vital first step.”

Now WineAmerica and its allies will seek to get a specific commitment from NASS to conduct a survey which would ideally include total vineyard acreage, different grape varieties, their use (wine, grape juice, table grapes, raisins), relative crop value, full-time equivalent employment, and other measures of economic impact.

“This type of information is vital to accurately measure total economic impact,” said John Dunham of John Dunham & Associates which conducted both the 2017 and 2022 studies for WineAmerica. “Grapes are the foundation of the wine industry, and reliable data is the foundation of economic research.”

The 2017 study reported the wine industry’s total economic impact of \$220 billion, and the 2022 study \$276 billion—a 25% increase despite the Covid era. All 50 states produce wine and include 10,637 wine producers, provide 1.84 million jobs, pay \$95.5 billion in annual wages, attract 49 million tourists, and pay a total of \$22.8 billion in taxes. Wine is the ultimate value-added product from the vine to the glass, and a powerful economic engine.



“This step is very encouraging in bolstering our efforts to secure reliable vineyard data for the industry,” said Michael Kaiser, Executive Vice-President and Director of Government Affairs at WineAmerica. “We still have more work to do in garnering additional support in Congress and USDA, but this makes it much simpler and faster.”

WineAmerica had planned on requesting restoration of the vineyard survey as part of the 2023 Farm Bill, and still will do so, but including it in the Omnibus spending bill will greatly speed up the process. The Farm Bill is a massive, complicated, five-year law that is difficult to pass under the best conditions but will likely be even more so with a new divided Congress starting in January. Most likely it will not be passed until the end of 2023 or later.

WineAmerica will immediately start advocating for NASS to get the funding and approval to begin creating the study parameters, since the study itself will likely take considerable time. However, it will be of great value to all 50 states. WineAmerica is the National Association of American Wineries headquartered in Washington, DC. The organization includes over 400 winery members, 40 winery trade associations, and several suppliers from 41 states, and is widely respected in Washington as a key advocate for the American wine industry.

# Finger Lakes Vineyard Update

## Finger Lakes Grape Program

January 25th, 2023

### Upcoming Events

Don't forget to check out the calendar on our website (<http://flgp.cce.cornell.edu/events.php>) for more information about these and other events relevant to the Finger Lakes grape industry.



### 2023 CCE Ontario Pesticide Training and Recertification Series

*Wednesdays, February 1, 8, 15, 22, 2023* 7:00 pm - 9:30 pm

**Exam Wednesday, March 1, 2023** 6:00 pm - 10:00 pm

*Cornell Cooperative Extension-Ontario County, 480 North Main Street, Canandaigua, NY 14424*

Anyone interested in obtaining a pesticide certification and meets the DEC (Department of Environmental Conservation) experience / education requirements OR current applicators seeking pesticide recertification credits should attend. 2.5 recertification core credits will be available for each class.

Cost: \$230.00 for certification which includes the training manuals and all 4 classes. **Does not include the \$100.00 exam fee.** Recertification is \$40.00/person/class.

Contact for Information and Registration: Cornell Cooperative Extension-Ontario County, 585-394-3977 x 427 or x 436 or email [nea8@cornell.edu](mailto:nea8@cornell.edu) or [rw43@cornell.edu](mailto:rw43@cornell.edu) Registration form is available on the CCE-Ontario County website, [www.cceontario.org](http://www.cceontario.org).

[https://blogs.cornell.edu/flxgrapes/calendar\\_event/2023-pesticide-training-and-recertification-series/](https://blogs.cornell.edu/flxgrapes/calendar_event/2023-pesticide-training-and-recertification-series/)

# Finger Lakes Vineyard Update

## Finger Lakes Grape Program

January 25th, 2023

## Additional Information

Become a fan of the [Finger Lakes Grape Program on Facebook](#), or follow us on [Twitter \(@cceflgp\)](#) as well as YouTube. Also check out our website at <http://flgp.cce.cornell.edu>.

Got some grapes to sell? Looking to buy some equipment or bulk wine? List your ad on the [NY Grape & Wine Classifieds website](#) today!

### Finger Lakes Grape Program Advisory Committee

**Eric Amberg**- Grafted Grapevine Nursery

**Bill Dalrymple**- Dalrymple Farm

**Matt Doyle**- Doyle Vineyard Management

**Eileen Farnan**- Barrington Cellars

**Chris Gerling**- Cornell University Extension

**Luke Haggerty**- E & J Gallo

**Tina Hazlitt**- Sawmill Creek Vineyards

**Cameron Hosmer**- Hosmer Winery

**T.J. Brahm** – Randall Standish Vineyards

**Harry Humphreys**- Overlook Farms

**Gregg McConnell**- Farm Credit East

**Herm Young**– Young Sommer Winery

**John Santos**- Hazlitt 1852 Vineyards

**Steve Sklenar**– Sklenar Vineyard

**Justine Vanden Heuvel**- Cornell University

**Peter Weis** – Weis Vineyards

**Kim Marconi** – Three Brothers Wineries & Estates

*Cornell University Cooperative Extension provides equal program and employment opportunities. CCE does not endorse or recommend any specific product or service. This program is solely intended to educate consumers about their choices. Contact CCE if you have any special needs such as visual, hearing or mobility impairments.*

## Cornell Cooperative Extension Finger Lakes Grape Program

**Hans Walter-Peterson**—Team Leader

**Donald Caldwell**—Viticulture Technician

The Finger Lakes Grape Program is a partnership between Cornell University and the Cornell Cooperative Extension Associations in Ontario, Seneca, Schuyler, Steuben, Wayne and Yates Counties.

[flgp.cce.cornell.edu](http://flgp.cce.cornell.edu)

*"Cornell Cooperative Extension is an equal opportunity, affirmative action educator and employer"*

