

Finger Lakes Vineyard Update

Monitoring Grape Bud Hardiness in 2022-23

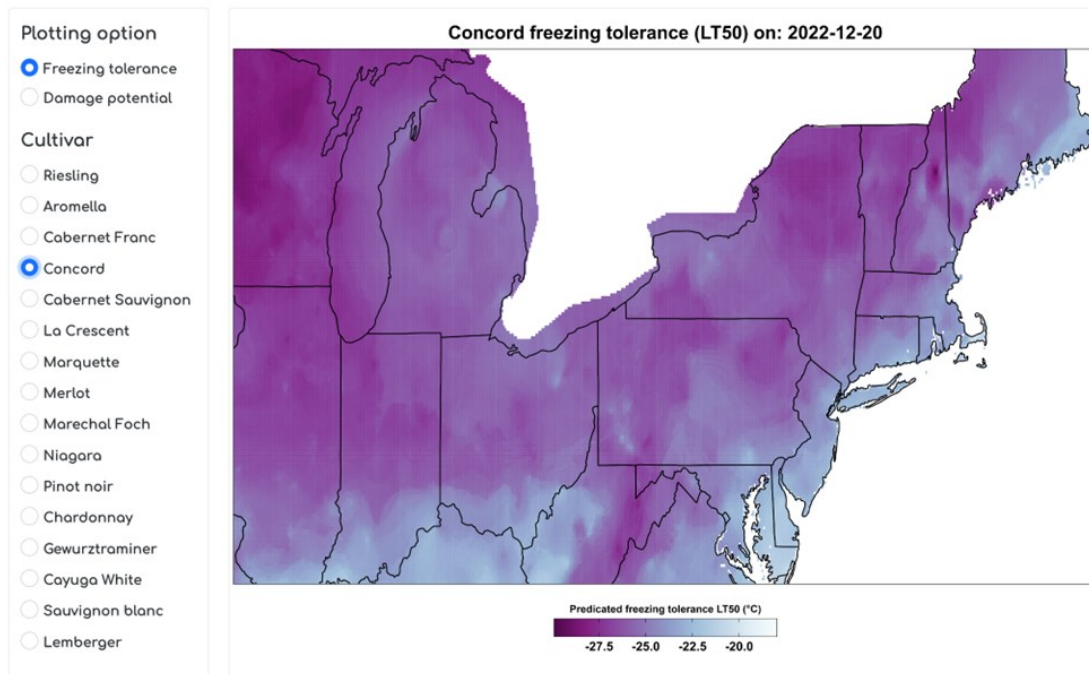
We are ramping up our annual bud hardiness monitoring project once again. The project is now being led by [Jason Londo](#), fruit physiologist at Cornell AgriTech. Many of you have heard Jason speak at B.E.V. NY in the past about the recent development of new models that predict grapevine cold hardiness based on weather data. This year, we are beginning to see the results of that work by means of how this information is being presented to the industry on the [project website](#). The landing page for the project looks very much the same as it has in the past, but when you [click on the link for this year's data](#), you'll be met with something that looks very different than past years, but also very informative. It's important to mention up front that this new site is still a work in progress, so it is still being worked on to sort out bugs and add more information over time.

[2022-23 Low Temperature Exotherm Data \(link\)](#)

In this Issue:

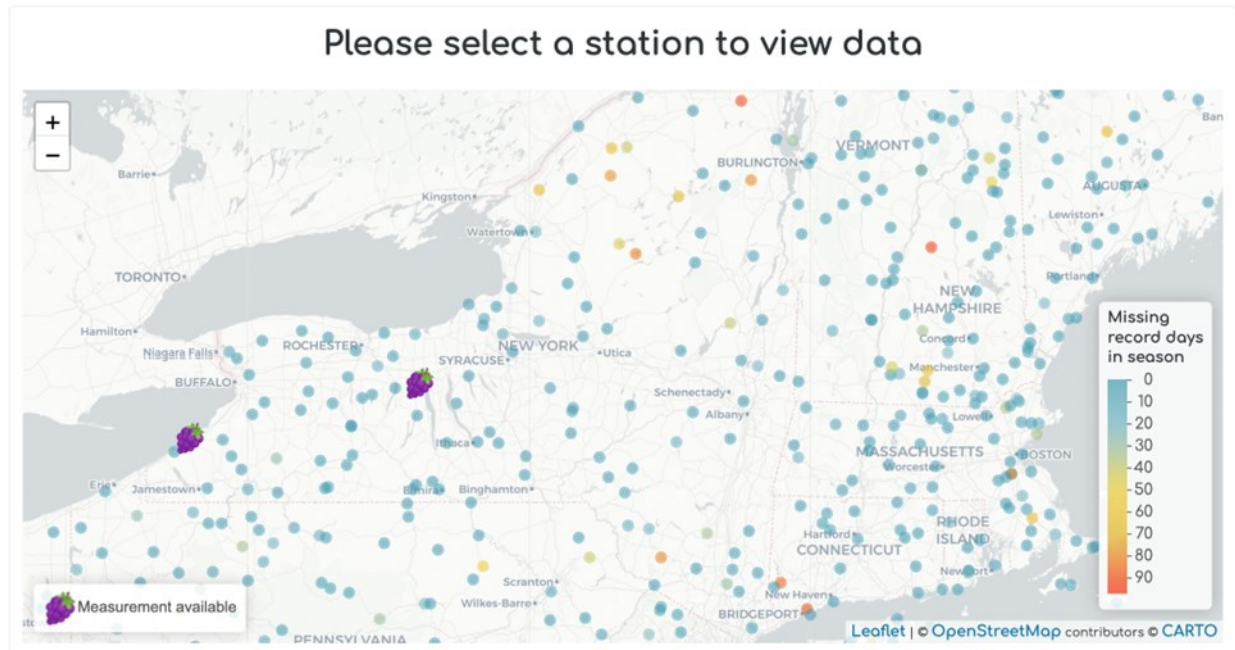
Bud Hardiness	pg. 1
BEV NY 2023	pg. 4
Neonics Restricted Use	pg. 5
2022 Ag Census	pg. 5
EVEF Webinars	pg. 6
Ag. Supervisor Trainings	pg. 7
Farm Energy Audit	pg. 8
Farmworker Housing Grant	pg. 9
On farm Housing Grant Brochure	pg. 10
Events	pg. 12

The new site essentially has two parts. The first one is a broad, regionwide map showing estimated freezing tolerance (measured by LT₅₀, the temperature needed to kill 50% of buds in a sample) for several vinifera, hybrid and native varieties. These maps are based on the models that Jason and his lab have been developing for a number of years now, plus weather data from various weather stations across the region. You can see a map of either freeze tolerance or potential damage by cultivar, with color coding on the map based on the model's output for those areas. Currently, the freeze tolerance scale stretches from a little above -20°C (-4°F) to almost -30°C (-22°F).



Monitoring Grape Bud Hardiness in 2022-23 (continued from page 1)

The second part of the new site lets users drill down to more specific locations. Below the regional map, you'll find a map of the Northeast with a lot of dots on it. Each dot represents a weather station that you can select to see what the predicted LT50 values are for each of those locations based on the models. The two sites with grape clusters represent Geneva and Portland, where measurements are currently being done to continue honing the models. The results of those measurements are shown for those two locations.

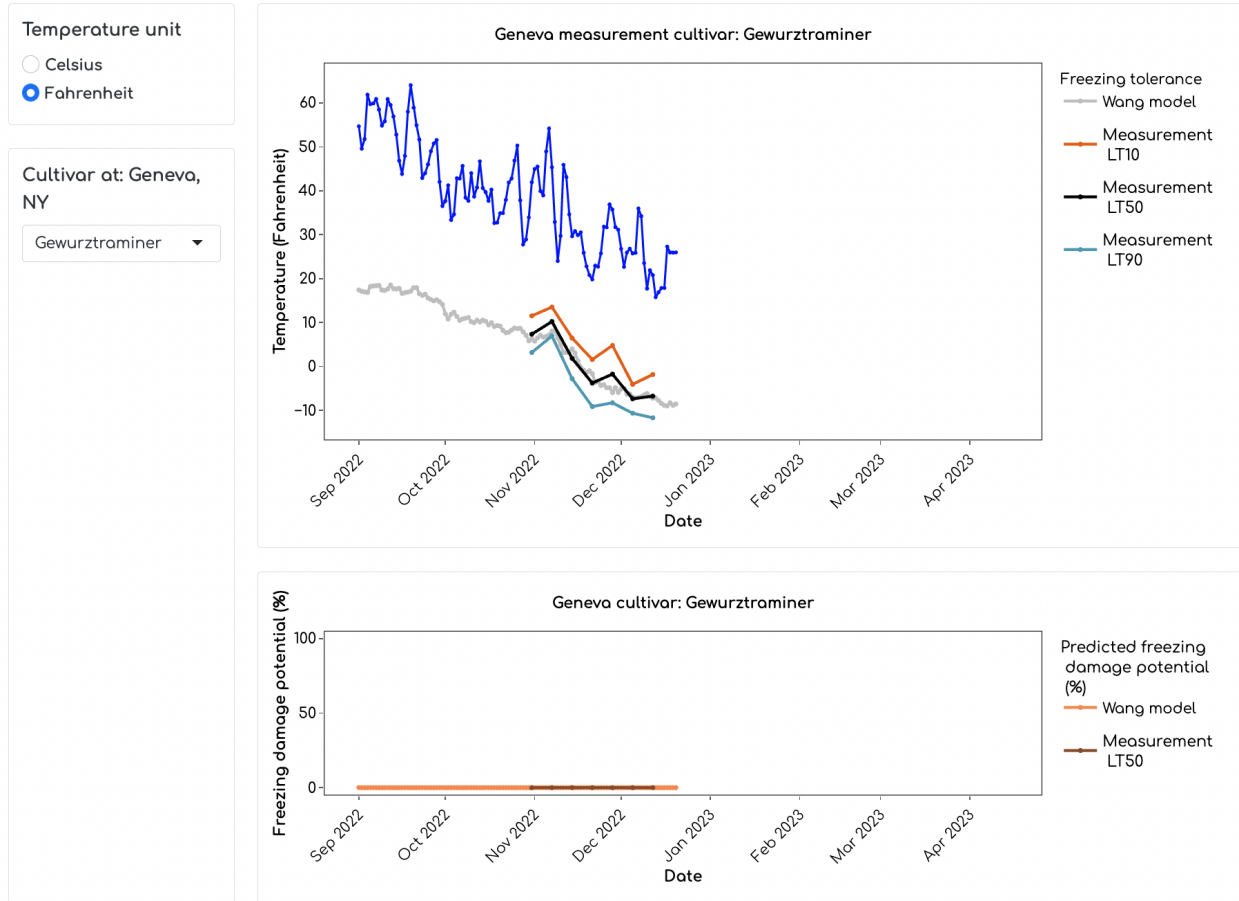


When you select a particular station, the windows below will show the measured low temperatures at that site, along with the predicted freezing tolerance for the chosen cultivar, which can be selected by the user. These graphs will look more familiar to those who have looked at these charts in previous years. In the case of Geneva (below), the chart displays the LT₁₀, LT₅₀ and LT₉₀ values for each cultivar, along with the predicted LT₅₀ value from the model (the gray line). If you hover your cursor over each of the lines, it will show you the value for each time point that is charted. In this case, the measured LT₅₀ for Gewürztraminer as of last week is about -6.7°F, and the modeled LT₅₀ was -7.2°F.

Below that chart is a second one that predicts the amount of potential bud damage for that cultivar based on the weather to this point. The current chart shows 0% potential for injury because the low temperatures at Geneva have not reached the point where we would expect any damage. As with previous years, once the low temperatures start approaching or crossing the LT₁₀ or LT₅₀ lines, growers should be assessing damage in their own blocks.

The biggest advantage of having a model to predict freeze tolerance is that growers in all parts of New York and elsewhere can get an idea of how much potential bud damage there might be in their own area, not just where we are sampling.

Monitoring Grape Bud Hardiness in 2022-23 (continued from page 2)



I encourage growers to check out the new site and see how it works for themselves. As I mentioned, it's still a work in progress but it provides important information about potential bud injury for growers around the state, not just a few locations in the Finger Lakes and Lake Erie regions.

Cultivar	Measured LT ₅₀ value (°F)	Modeled LT ₅₀ value (°F)
Riesling	-8.8	-9.5
Cabernet Franc	-10.3	-7.6
Concord	-14.9	-15.3
Marquette	-14.1	-13.0
Chardonnay	-10.9	-9.3
Cayuga White	-7.7	-8.9
Lemberger	-8.1	-9.4

Current LT₅₀ results from Geneva (samples collected December 12, 2022)

B.E.V. NY 2023: Making, Measuring and Marketing New York Wines

Tuesday, March 28 – Thursday, March 30

[Marriott Downtown Syracuse](#)

Website: <https://www.bevny.org/>



We're back baby! After two years of holding B.E.V. NY as a virtual event, we are excited that we will be able to gather in person at the Marriott in downtown Syracuse for this year's conference. But for those who cannot make it to attend B.E.V. NY in person, we will still be offering an online option for people to attend the sessions remotely.

This year, the conference program will be structured a bit differently that it has been. Previously, each day of the conference focused on one aspect of the industry – business, enology, and viticulture. This year's program will have B, E and V sessions on each of the three days, giving attendees the opportunity to participate in sessions that they might not normally get to under the old program model.

The overarching theme of this year's B.E.V. NY is 'Making, Measuring and Marketing New York Wines'. There is a lot in the process of growing grapes, making wine, and selling it that is based on one's instincts and experience, but as new tools and technologies emerge, there is a growing amount of data that can be gleaned from the vineyard, the cellar, customers, etc. to improve one's business. But what data can be gathered these days, and more importantly, what can you do with it? Many of our speakers and sessions will be looking at this idea from different perspectives, including the vineyard.

The speakers for this year's viticulture program include some familiar faces, including [Greg Loeb](#), [Katie Gold](#), [Justine Vanden Heuvel](#), [Jason Londo](#), [Bruce Reisch](#), [Terry Bates](#), and [yours truly](#). I'm excited to announce that our viticulture keynote speaker this year is Dr. Mark Greenspan, founder of [Advanced Viticulture](#), a vineyard consulting company based in Sonoma County, California. Mark has spent many years using a number of different tools and technologies to collect data in his clients' vineyards, and most importantly, helping them to translate that data into practices that can improve their operations. His philosophy on this subject, which I share, is that it's not about collecting *more* data, it's about collecting the *right* data.

Being back in person also means that the B.E.V. NY trade show will be back as well. One of the benefits of the new location for this year's conference is that there is room for more vendors than we've had in the past, allowing us to have more companies and organizations come to introduce their latest products and services to the industry. If you are interested in being an exhibitor at this year's trade show, or you know somebody who would be, details about prices and registration can be found at <https://www.bevny.org/sponsors>. There are also multiple sponsorship opportunities available to support B.E.V. NY and help your company or organization stand out from the crowd and be recognized for your support. Information on sponsorships can also be found at the same link above for exhibitors.

Registration is available now at <https://www.bevny.org/register>. Early registration rates will end on January 31, 2023. Members of the New York Wine and Grape Foundation will also receive 25% off their registration fee for either the in-person or online option.

Be sure to mark your calendar for B.E.V. NY 2023 and plan to join us in Syracuse, or online. I hope to see many of you there.

DEC Reclassifying Neonicotinoids as Restricted Use Materials in 2023

Note: The primary material used by grape growers that is impacted by this is Assail (all formulations), which has not been classified as a restricted use material up until now. Other neonicotinoids and imidacloprid formulations or mixes, including Leverage, Admire Pro, and Brigadier, are already classified as restricted use materials.

In an effort to protect pollinator populations, the NYSDEC announced earlier this year that many pesticides containing neonicotinoids will be reclassified as restricted use starting in 2023. We are now approaching the start date of this reclassification. A full listing of neonicotinoid products effected by the decision are listed on the NYSDEC website [here](#). In 2023, those using reclassified pesticides on the list must be certified applicators in New York; i.e. they must pass the applicator certification exam, pay a fee, and obtain their pesticide applicator certification from the NYSDEC. "Purchase, possession, distribution, or application of these pesticide products" is illegal for those without pesticide applicator certification or purchase permits after December 31st of this year.



The 2022 Census of Agriculture is Underway

Last week, we mailed survey codes for responding securely online to the 2022 Census of Agriculture at agcounts.usda.gov. Your unique survey code will get you started with the online response option that offers time saving features that are ideal for busy grape producers.

By completing the 2022 Census of Agriculture, you tell your story and help generate comprehensive and impartial agriculture data for New York that better serve you and future generations of producers.

"Grape production has an incredible impact on New York. I want to thank producers in advance for responding to the ag census" said Donnie Fike, New York State Statistician of USDA's National Agricultural Statistics Service (NASS), "We recognize how valuable their time is, so we have made responding more convenient and modern than ever."

To learn more about the Census of Agriculture, visit nass.usda.gov/agcensus or call 800-727-9540. On the census web page, producers and other data users can access frequently asked questions, past ag census data, [partner tools](#) to help spread the word about the ag census, special study information, and more. For highlights of these and the latest information on the upcoming Census of Agriculture, follow USDA NASS on Twitter @usda_nass and search #AgCensus.

###

NASS is the federal statistical agency responsible for producing official data about U.S. agriculture and is committed to providing timely, accurate and useful statistics in service to U.S. agriculture.

Eastern Viticulture and Enology Forum

We have been working with viticulture and enology colleagues from Penn State and Virginia Tech Universities to develop this winter's Eastern Viticulture and Enology Forum. The Forum consists of a series of webinars focused on a range of viticulture and enology topics. Below is the information about the remainder of this year's viticulture webinars:

January 10, 2023

Corrective measures to the top 10 dormant pruning mistakes in commercial vineyards

- Fritz Westover - Viticulturist and Founder, Westover Vineyard Advising, fritz@vineyardadvising.com

Registration: <https://extension.psu.edu/top-10-dormant-pruning-mistakes-in-your-vineyard>

February 7, 2023

Academic and industry perspectives on biofungicide use in vineyards

- Kaitlin Gold - Assistant Professor of Grape Pathology, Cornell AgriTech, kg577@cornell.edu
- Mizhuo Nita - Associate Professor of Grape Pathology, Virginia Tech, nita24@vt.edu
- Karl Hambsch - Co-owner and Vineyard Manager, Loving Cup Vineyard and Winery, info@lovingcupwine.com
- Paul Brock - Co-owner, Silver Thread Vineyards, paul@silverthreadwine.com
- John Santos – Vineyard Manager, Hazlitt 1852 Vineyards, john@hazlitt1852.com

Registration: <https://extension.psu.edu/academic-and-industry-perspectives-on-biofungicide-use-in-vineyards>

March 7, 2023

Climate change implications for grapevine production in wine regions of the United States

- Greg Jones – CEO, Abacela Winery, climateofwine@gmail.com

Registration: link coming soon

Agricultural Supervisory Leadership Certificate Series: Transitioning to Supervisor

January 20 - February 23, 2023

Hosted by [Cornell's Agricultural Workforce Development Program](#)

Supervisors are critical to the success of farm businesses. They have a major impact both on employees' daily work experiences and on the production performance of the business. The Agricultural Supervisory Leadership certificate series helps farm supervisors and managers learn and apply human resource management practices and leadership skills that foster rewarding workplaces and drive business results. Confident managers who thoughtfully apply leadership and management skills improve employee performance, develop teams, reduce employee turnover, and increase employee engagement. The courses within the certificate program will offer extensive practice and engagement activities to build confidence and skill sets.



Course Topics:

- Develop essential communication skills and manage conflict
- Lead a multi-cultural team
- Build an effective workplace culture

Registration: <https://cvent.me/QgwAP1?i=JnmW31mqXUyXSkdi7HAYvQ&locale=en-US>

Cost: \$275 per person

Materials will release January 20, 2023 and live weekly Zoom discussions will be held from 3:00 – 4:00 PM EDT each Thursday, starting January 26. Participation in the live sessions is highly encouraged and provides a valued opportunity for peer-to-peer learning and networking.

For questions, contact Rachel McCarthy, Supervisory Leadership Certificate Program Coordinator, at rachel.mccarthy@cornell.edu.

Reduce Your Farm Energy Bills: Take Advantage of the Agricultural Energy Audit Program This Winter

The Agricultural Energy Audit Program (AEAP) has been implemented by The New York State Energy Research and Development Authority since 2016. Eligible farms and on-farm producers, including but not limited to: dairies, orchards, greenhouses, vegetables, vineyards, grain dryers, and poultry/egg, qualify to participate. NYSERDA will assign a Flexible Technical (FlexTech) Program Consultant to perform the energy audit for eligible farms and then all energy audits are reviewed for technical soundness and program compliance by a company called Ensave. Presently there are approximately 750 dairies in the AEAP that have received an energy audit.

The AEAP provides farms and on-farm producers with no-cost energy audits, including recommendations to improve energy efficiency. The program also helps participants access funding support to implement energy efficiency measures. This first-come, first-served program is open through September 2025 or until program funds expire.

New York farms can choose from two audits based on their needs:

- **Level Comprehensive:** This energy audit is focused on a specific complex energy system or renewable energy production. This report is ideal for operations with a complex system to be analyzed beyond standard energy efficiency upgrades or if the farm is interested in pursuing renewable energy. The energy audit report with calculated evaluations of appropriate energy efficiency measures including simple payback; meets ANSI/ASABE S612 standards.
- **Level Targeted:** This energy audit focused on specific systems, energy efficiency measures, or renewable energy.

Once an audit report is complete, EnSave assists the farm with selecting the most appropriate measures to implement and accessing funding, including programs through electric and gas utilities and the federal government.

Here is a link to the program on the NYSERDA website: <https://www.nyserda.ny.gov/All-Programs/agriculture-energy-audit> which provides an overview of the program.

How to Apply

There are two options for how to apply for an energy audit:

Complete the online [Agriculture Energy Audit application](#) - this is a web document and can be done within a web browser.

Download a document version of the [Agricultural Energy Audit application \[PDF\]](#) and submit it either:

- Via email to aeep@nyserda.ny.gov
- or print and mail the application document to:

NYSERDA

Attn: Agriculture Energy Audit Program Administrator

17 Columbia Circle Albany, NY 12203-6399

PathStone Corporation is currently accepting applications for their 2022-2023 Farmworker Housing Grant

This program is a matching grant of up to \$3,000 to repair and upgrade existing farm labor housing. Examples of eligible repairs include, but are not limited to: roofing, bathrooms, plumbing, upgrading kitchens and appliances, heating, windows, ceilings, doors and other major structural components. Farm Owners must agree to provide \$1 for every \$1 provided by PathStone Corporation. This grant is available in Monroe, Wayne, Ontario, Seneca, Orleans, Wyoming, Livingston, and Genesee counties. If interested, or if you have questions, please contact Susan Kwik at 585-261-1779 or skwik@pathstone.org for an application. Applications are due March 3, 2023 and the work will need to be completed by the end of June 2023.

PathStone



Connecting You to Opportunities

PathStone builds family and individual self-sufficiency by strengthening farmworker, rural and urban communities. PathStone promotes social justice through programs and advocacy.

MONITORING

PathStone will monitor the project for 5 years by requesting the farm submit affidavits annually to verify the housing is still occupied by farmworkers.



MANUFACTURED HOMES

If your farm is interested in receiving a grant to make structural repairs on a manufactured home, the farm must hire a certified manufactured home mechanic.

What is PathStone?

PathStone is a private, not-for-profit community development and human service organization. We are a visionary, diverse organization empowering individuals, families and communities to attain economic and social resources for building better lives.

For more information contact:

Susan Kwik

Home Rehabilitation Administrator

75 College Avenue

Rochester, NY. 14607

skwik@pathstone.org

585-546-3700 x3020

Fax 585-546-2946



PathStone Corporation

On Farm Housing Grant Program



PathStone
Connecting You to Opportunities

www.pathstone.org

ON FARM HOUSING GRANT PROGRAM

With grant funds provided by the U.S. Department of Labor, under the Workforce Investment Act (WIA), PathStone Corporation will provide financial assistance to growers who wish to upgrade or improve their farm labor housing.



Eligible Projects

The program is limited to farmers and growers who own existing farm labor housing that is in need of repairs and upgrades that will have a direct impact on the safety and health of farmworkers.

Typical Examples

- Bathrooms and plumbing systems
- Kitchens and replacement of appliances
- Heating and insulation
- Interior walls, floors, and ceilings
- doors, windows, and other major structural components

NOT ELIGIBLE

New Construction

Crew Leader Owned Housing

*We reserve the right to reject any and all applications.

FINANCIAL ASSISTANCE

\$\$\$\$

PathStone Corporation will provide up to a maximum \$3,000 grant to farmers and growers to repair and upgrade their existing farm labor housing. Farmers must agree to provide at least a matching financial amount of \$1 for every \$1 provided by PathStone Corporation.

HOW TO APPLY

1. Contact Susan Kwik at 585-261-1779 or skwik@pathstone.org for an application.
2. Complete, sign and return the On-Farm Housing Grant Application. Include proposed work scope, and pictures if possible. Application deadline is March 3rd.
3. Schedule an initial inspection with PathStone's Home Rehabilitation Administrator
4. If your project is selected, sign the On-Farm Housing Grant Agreement. Agree to complete the work by May 31, 2023
5. Notify PathStone when work is complete to schedule final inspection.
6. Submit all invoices, final permits and proof of payment PathStone.



Upcoming Events

Upcoming Events

Don't forget to check out the calendar on our website (<http://flgp.cce.cornell.edu/events.php>) for more information about these and other events relevant to the Finger Lakes grape industry.



New York Grape IPM Specialist Interview Seminar: Dr. German Vargas

Thursday, January 5 9:30 AM

Barton Hall Room A134

Cornell AgriTech, Geneva NY

Also available on Zoom: <https://cornell.zoom.us/j/4937433599?pwd=L1pkTWF0YTBZV3VWU0g4cIRZc2g2dz09&from=addon>

Please join New York State Integrated Pest Management on Thursday January 5, 2023, 9:30AM in Barton A134 for a seminar by Dr. German Vargas, a finalist candidate for the Grape IPM Specialist position with our program.

Presentation summary from Dr. Vargas

From Extension and Research in IPM on Sugarcane and Ornamental Industries to Challenges in Grapes

This seminar will start with an introduction on my background as an extensionist and IPM practitioner. My experience in the establishment of an applied research and extension programs will be exemplified with projects in the sugarcane industry in Colombia and my current efforts in establishing an IPM program for the invasive hibiscus bud weevil in the ornamental industry in Florida. The above will lead to a discussion on my approach on the development of a program of applied research and extension on IPM for grapes, and the challenges and solutions I foresee for grape growers. I will initially indicate general aspects of such program to then comment on two specific cases such as the grape berry moth, and the invasive spotted lanternfly. I will also discuss my approach to IPM as a model that goes beyond putting all different pest management alternatives together, to the need of getting all together (researchers, extensionists, growers and stakeholders) assembling problem-solving teams to find rational, economical, and effective ways of dealing with pests. My goals for extending information to NYS grape growers will be based on the use of already existing educational tools such as VineBalance to train, agree and strengthen on different IPM practices available. In addition to conventional tools such as webinars, workshops, field days and field visits; major efforts will be oriented towards the establishment of an IPM action committee, that meets regularly every three to four months, making use of a hybrid mix of in-person attendees and remote meeting participants, so discussion is available on new developments on research. This task-oriented working group will emphasize the idea that inclusion is strategic in promoting plant health in the industry, so efforts will be directed to expand the program to underrepresented groups, such as minorities/Hispanics, meaning that bilingual English/Spanish materials will be always available, but also the chances to integrate different cultural background will be possible through or continuous effort of reaching out all interested clientele in the NYS viticulture industry.

Seminars for the other finalists for the NY Grape IPM position will be held on January 10 and January 26. We will send out information about those presentations when we have it.

Upcoming Events

Upcoming Events

Don't forget to check out the calendar on our website (<http://flgp.cce.cornell.edu/events.php>) for more information about these and other events relevant to the Finger Lakes grape industry.



Eastern Viticulture and Enology Forum

We have been working with viticulture and enology colleagues from Penn State and Virginia Tech Universities to develop this winter's Eastern Viticulture and Enology Forum. The Forum consists of a series of webinars focused on a range of viticulture and enology topics. Below is the information about the remainder of this year's viticulture webinars:

January 10, 2023

Corrective measures to the top 10 dormant pruning mistakes in commercial vineyards

- Fritz Westover - Viticulturist and Founder, Westover Vineyard Advising, fritz@vineyardadvising.com

Registration: <https://extension.psu.edu/top-10-dormant-pruning-mistakes-in-your-vineyard>

February 7, 2023

Academic and industry perspectives on biofungicide use in vineyards

- Kaitlin Gold - Assistant Professor of Grape Pathology, Cornell AgriTech, kg577@cornell.edu
- Mizhuo Nita - Associate Professor of Grape Pathology, Virginia Tech, nita24@vt.edu
- Karl Hambsch - Co-owner and Vineyard Manager, Loving Cup Vineyard and Winery, info@lovingcupwine.com
- Paul Brock - Co-owner, Silver Thread Vineyards, paul@silverthreadwine.com
- John Santos – Vineyard Manager, Hazlitt 1852 Vineyards, john@hazlitt1852.com

Registration: <https://extension.psu.edu/academic-and-industry-perspectives-on-biofungicide-use-in-vineyards>

March 7, 2023

Climate change implications for grapevine production in wine regions of the United States

- Greg Jones – CEO, Abacela Winery, climateofwine@gmail.com

Registration: link coming soon

Additional Information

Become a fan of the [Finger Lakes Grape Program on Facebook](#), or follow us on [Twitter \(@cceflgp\)](#) as well as YouTube. Also check out our website at <http://flgp.cce.cornell.edu>.

Got some grapes to sell? Looking to buy some equipment or bulk wine? List your ad on the [NY Grape & Wine Classifieds website](#) today!

Finger Lakes Grape Program Advisory Committee

Eric Amberg- Grafted Grapevine Nursery

Bill Dalrymple- Dalrymple Farm

Matt Doyle- Doyle Vineyard Management

Eileen Farnan- Barrington Cellars

Chris Gerling- Cornell University Extension

Mike Collizi- E & J Gallo

Tina Hazlitt- Sawmill Creek Vineyards

Cameron Hosmer- Hosmer Winery

T.J. Brahm – Randall Standish Vineyards

Harry Humphreys- Overlook Farms

Gregg McConnell- Farm Credit East

Herm Young– Young Sommer Winery

John Santos- Hazlitt 1852 Vineyards

Steve Sklenar– Sklenar Vineyard

Justine Vanden Heuvel- Cornell University

Peter Weis – Weis Vineyards

Kim Marconi – Three Brothers Wineries & Estates

Cornell University Cooperative Extension provides equal program and employment opportunities. CCE does not endorse or recommend any specific product or service. This program is solely intended to educate consumers about their choices. Contact CCE if you have any special needs such as visual, hearing or mobility impairments.

Cornell Cooperative Extension Finger Lakes Grape Program

Hans Walter-Peterson—Team Leader

Donald Caldwell—Viticulture Technician

The Finger Lakes Grape Program is a partnership between Cornell University and the Cornell Cooperative Extension Associations in Ontario, Seneca, Schuyler, Steuben, Wayne and Yates Counties.

flgp.cce.cornell.edu

"Cornell Cooperative Extension is an equal opportunity, affirmative action educator and employer"

