



# LAKE ERIE REGIONAL GRAPE PROGRAM

## *Electronic Crop Update for February 14, 2013*

### IN THIS UPDATE:

**TIME TO RENEW YOUR MEMBERSHIP!**

**GRAPE INTEGRATED PEST MANAGEMENT**

**UPCOMING EVENTS**

Go to <http://lergp.cce.cornell.edu/EventsCalendar.htm> for a detailed calendar of events including maps via Google calendar! Scroll to the bottom of the page for Google calendar and click on the event. Please remember to RSVP for those events that require one! UPCOMING EVENTS are also listed toward the bottom of this Electronic Update.

Please remember to let us know if you have changed or are in the process of changing your email address so we can keep the Electronic Crop Update coming to your inbox!

[Please email Edith at: emb35@cornell.edu.](mailto:emb35@cornell.edu)

### GRAPE INTEGRATED PEST MANAGEMENT: Tim Weigle

#### *Accessing NEWA Resources*

There are a number of ways to access the weather and pest information found on NEWA. The best place to start is the NEWA home page at <http://newa.cornell.edu/>. I personally like to access the

information through a station's home page as this gives me quick access to links to both weather and pest model information.

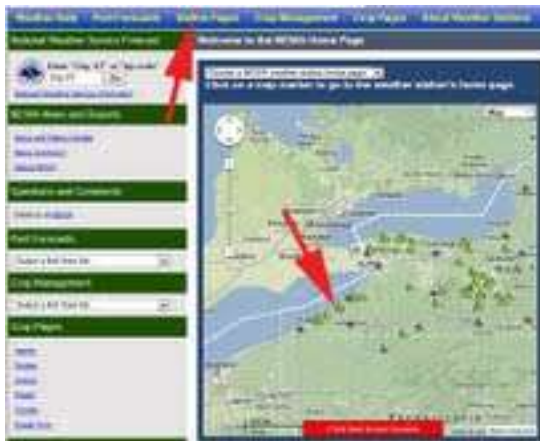


Figure 1

In *Figure 1* LEFT, the red arrows indicate the two main ways to access a Station Page from the home page. The upper arrow pointing to the blue menu bar indicates a pull down menu of all the stations available on NEWA. This is handy if you know the name of the station you are looking for but not the exact location. The lower arrow pointing at the interactive map allows you to choose a

specific station location. By clicking on that location you will be taken to that stations

home page. This map is scalable (you can zoom in and out) by either using the slider provided with the map (indicated by red arrow in *Figure 2*, BELOW) or if you have a mouse with a scroll button (Blue arrow in *Figure 3*) it can be used to zoom in and out as well.



FIGURE 3 Mouse with a Scroll Button

G  
r  
a  
p  
e  
  
I  
P  
M



Figure 2

For this example, I clicked on the Portland Escarpment and was taken to the Portland Escarpment Weather Station Page (Figure 4 BELOW RIGHT). Weather data can be accessed in the Quick Links in the upper left hand corner of the page while Pest Forecast for grape diseases, grapevine downy mildew and grape berry moth, and a wealth of other models for other crops, can be found in the box of Pest Forecasts. Accessing models through the station page will provide results specifically for that site.

Other important information includes when the station was last downloaded, the sensors that are available with a particular station

and a Google map of the station location. It is important to know the sensors that are available as this will determine the model

information that is available. Knowing where a station is located can also be useful. By looking at the Google map of the station location you can tell if the weather station is located close to a stretch of pavement (notice NEWA collects information from several airports across the region) or if it is close to a large body of water. Both locations can have an effect on the weather information that is being recorded.

This should provide you enough information to get you started on your exploration of the information

found on the NEWA website. If you have questions on accessing the site, or how to use the information you find in your vineyard IPM strategy, please get in touch with me at [thw4@cornell.edu](mailto:thw4@cornell.edu) or 716.792.2800 x203.



Figure 4

# TIME TO RENEW YOUR MEMBERSHIP

## MEMBERSHIP/ENROLLMENT MESSAGE FROM KATE ROBINSON:



*If you haven't renewed your membership yet please read the message below and consider renewing today...*

It's that time of year again... **TIME TO RENEW YOUR MEMBERSHIP.**

You should have received an enrollment card in the mail from the CCE office nearest you. The Chautauqua County enrollment card has proven to be a bit confusing so, if you need some help with filling it out, just give us a call or you can use the **enrollment form we are providing below at the end of this Update.** Please note that the CCE card needs to be mailed to your local CCE office, while this enrollment form can be sent directly to CLEREL in Portland. The address is noted on the form.

You will notice that there is a \$25.00 fee being charged for the receipt of Hard Copy Vineyard Notes Newsletters. This was something that much consideration was given. The other fruit and vegetable programs had already begun charging this amount for hard copies a few years back, but we wanted to hold off until more of our members were comfortable using the internet and e-mail. Penn State programs are actually moving towards a mail free environment, using only e-mail, texting and other electronic measures for information dissemination. We are following the lead of our local grape processors, Penn State, and the majority of other regional fruit and vegetable programs in going paperless. All correspondence from LERGP will be in electronic form. If you feel you must have a hard copy of newsletters, that option is available for a \$25.00 fee.

There is a benefit to opting for e-mail delivery of the Vineyard Notes. You will see it in color making the charts, maps and photos that are included in articles much easier to understand and pull details from. Also, if you are not using e-mail, you may be missing out on our Electronic Crop Update, which is timely information sent out to your e-mail on a weekly basis during the growing season. You can also access the Pesticide Guidelines for free on the internet. If you are not comfortable using computers or the internet, please just let us know. We would be more than happy to help you learn how to use these resources. If you have any questions or suggestions, please feel free to give us a call at 716-792-2800 ext. 201 or stop by in person!



Go to <http://lergp.cce.cornell.edu/EventsCalendar.htm> for a detailed calendar of events including maps via Google calendar. Scroll to the bottom of the page for Google calendar and click on the event. *Please remember to RSVP for those events that require one!*

**U  
p  
c  
o  
m  
i  
n  
g  
E  
v  
e  
n  
t  
s**

**WINEMAKER'S ROUNDTABLE**

**TOPIC:** White Hybrids

**DATE:** Monday, March 18, 2013

**TIME:** 4:00pm – 6:00pm

**LOCATION:** CLEREL Meeting Room, 6592 West Main Road, Portland, NY 14769

**COFFEE POT MEETINGS will begin WEDNESDAY, MAY 1, 2013!**

**Start looking for more notice in these Updates, Upcoming Events Notices, and on the Website and mark your calendars!**

**PLEASE NOTE: Next Electronic Crop Update will be Thursday, March 28, 2013**

*Lake Erie Regional Grape Program Crop Update* is an e-mail newsletter produced by the Lake Erie Regional Grape Program and sent out by subscription only. For subscription information, please call us at 716.792.2800 ext 201, or look for subscription forms at [http://lergp.cce.cornell.edu/Join\\_Lergp.htm](http://lergp.cce.cornell.edu/Join_Lergp.htm).

For any questions or comments on the format of this update please contact Tim Weigle at: [thw4@cornell.edu](mailto:thw4@cornell.edu).

***Lake Erie Regional Grape Program Team Members:***

[Andy Muza](#), Extension Educator, Erie County, PA Cooperative Extension, 814.825.0900

[Tim Weigle](#), Grape IPM Extension Associate, NYSIPM, 716.792.2800 ext. 203

[Kevin Martin](#), Business Management Educator, 716. 792.2800 ext. 205

---

Subscribe to Appellation Cornell Newsletter:

<http://grapesandwine.cals.cornell.edu/cals/grapesandwine/appellation-cornell/index.cfm>

[2011 Appellation Cornell Newsletter Index:](#)

<http://grapesandwine.cals.cornell.edu/cals/grapesandwine/appellation-cornell/2011-index.cfm>

[Veraison to Harvest newsletters:](#) <http://grapesandwine.cals.cornell.edu/cals/grapesandwine/veraison-to-harvest/index.cfm>

[NY Grape & Wine Classifieds](#) – New Address! - <http://flgclassifieds.cce.cornell.edu/>

This publication may contain pesticide recommendations. Changes in pesticide regulations occur constantly, and human errors are still possible. Some materials mentioned may not be registered in all states, may no longer be available, and some uses may no longer be legal. Questions concerning the legality and/or registration status for pesticide use should be directed to the appropriate extension agent or state regulatory agency. Read the label before applying any pesticide. Cornell and Penn State Cooperative Extensions, and their employees, assume no liability for the effectiveness or results of any chemicals for pesticide usage. No endorsements of products are made or implied.

Cornell University Cooperative Extension provides equal program and employment opportunities.

*Contact the Lake Erie Regional Grape Program if you have any special needs such as visual, hearing or mobility impairments.*

CCE does not endorse or recommend any specific product or service.

***THE LAKE ERIE REGIONAL GRAPE PROGRAM at CLEREL***

**6592 West Main Road**

**Portland, NY 14769**

**716-792-2800**