



Cornell Cooperative Extension Finger Lakes Grape Program

April 13th, 2022

Finger Lakes Vineyard Update

Don't Forget to Register for the 2022 Spring Grape IPM Meeting

Meeting Registration Link: [Spring IPM Meeting Registration](#) or call (315) 536-5134

No cost for registrations by Tuesday, April 19. Cost will be \$10/person after that.

Sponsorship Link: [Spring IPM Meeting Sponsorship](#)

In This Issue:	
Spring IPM Meeting	pg. 1
FLGP is Hiring!	pg. 2
SLF Survey	pg. 2
Save the Date	pg. 3
Events	pg. 4
GDD's	pg. 6

After two years over Zoom, we will be holding our Spring Grape IPM Meeting **in person** this year! Speakers and credits and dinner – the whole shebang. The meeting will be held at Wagner Vineyards in their new indoor/outdoor space off the tasting room. The space has large doors that can be opened to allow for adequate ventilation but also provide cover in case of rain. So if it's chilly, you might want to bundle up a little. The space has some chairs available, but as always feel free to bring your own as well.

This year's speakers will include:

- Katie Gold (grape diseases)
- Lynn Sosnoskie (weeds)
- Greg Loeb (insects)
- Chris Wainwright (DEC update)

The meeting has been approved for 1.5 recertification credits. There will be no online version of the meeting this year, but there will be other opportunities to earn credits from online meetings this year for those who prefer not to attend in-person.

After the meeting is finished, the Ginny Lee Café will provide dinner for those who want to stay. There is no cost to attend, but **pre-registration is required** either by using the link below or calling our office at (315) 536-5134. If you want to have dinner, you must register by April 19 and indicate that on your registration so we can tell the restaurant how many people to prepare for. Registrants after that date will not be guaranteed a meal, but are still welcome to attend and receive pesticide credits. There will be a \$10 fee for those who do not pre-register by April 19.

To register for the meeting, please go to the [Spring IPM Meeting Registration](#) page or call our office at (315) 536-5134.

Sponsors: We are still looking for a few more sponsors for this year's Spring Grape IPM meeting to help defray some of our costs. As a sponsor, you will have a brief opportunity (2-3 minutes) during the meeting to address the attendees, highlighting your organization and its products and services. There will also be one or two tables available where a small amount of literature can be placed for attendees to peruse. There is no option to present slides or other media, other than handouts. Sponsors for this meeting are typically pesticide producers and suppliers, but sponsorships are open to any organization interested in supporting the meeting.

Sponsorship cost is \$200. To register as a sponsor, visit the [Spring IPM Meeting Sponsorship](#) page or contact Brittany Griffin at (315) 536-5134 or bg393@cornell.edu.

FLGP is Hiring!

The Finger Lakes Grape Program (FLGP), a regional ag extension team that is part of Cornell Cooperative Extension, is looking to hire a seasonal field worker to assist with vineyard management and research projects at the program's Teaching and Demonstration Vineyard and in commercial vineyards in the Finger Lakes region. Duties will include collecting data on vine growth and development, crop yields, and other data as required for field trials, and assisting FLGP staff with various management activities at the Teaching and Demonstration Vineyard. The individual will also be able to participate in various extension activities conducted by the FLGP. Other learning opportunities involving grape-related research and extension activities at Cornell are possible as well.

Term: June 1 - August 19, 2022 (11 weeks); additional weeks possible depending on applicant's schedule.

Hours: Flexible; 24-32 hours/week on average, depending on applicant's schedule.

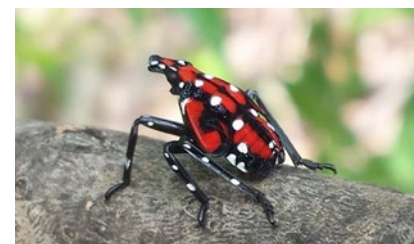
Pay: \$14.50 per hour

Requirements:

- Ability to work independently and in various outdoor conditions
- Regular access to a reliable vehicle and good driving record
- High School diploma; some viticulture or horticulture coursework is beneficial

Spotted Lanternfly Survey from Penn State

Dr. Claudia Schmidt, an ag economist at Penn State, is leading a project focused on developing a better understanding of the economic impact of spotted lanternfly on the grape and wine industry. The members of the PSU grape team have developed a brief comprehensive survey that has questions for both grape growers and wine producers. Our friends with Penn State have been working very hard to learn as much as they can about this new pest, and have been generous to everyone by sharing their information with surrounding states. I know it's another survey, but if you have a few minutes sometime soon to fill this out, even though SLF is not affecting our vineyards yet, I know they would greatly appreciate it. - Hans



From Penn State's grape team:

Spotted Lanternfly (SLF) threatens the grape and wine industry. However, we have not formally collected evidence on *SLF impacts on the grape and wine industry regarding yield loss, management costs, potential business reputation loss, and industry outlook.*

With your help, this survey aims to fill this gap and collect data on SLF's actual costs to grape and wine industry members. **Even if your vineyard or winery is not impacted, please fill out the survey.**

You can access the survey here: https://pennstate.qualtrics.com/jfe/form/SV_b1I8IGq5cZxQMlO

If you have questions about this survey, please contact Claudia Schmidt (czs786@psu.edu).



**Look who's happy to
retire...**



Save the Date!

Retirement
Party for Tim
Martinson

Friday May
20th

6:00pm

Anthony
Road Wine
Company

1020
Anthony Rd
Penn Yan, NY
14527

Details and RSVP
coming soon!

Upcoming Events

Don't forget to check out the calendar on our website (<http://flgp.cce.cornell.edu/events.php>) for more information about these and other events relevant to the Finger Lakes grape industry.



Spring Grape IPM Meeting

Tuesday, April 26 4:30 – 6:00 PM

Wagner Vineyards

9322 NY Route 414, Lodi NY 14860

To register for the meeting, please go to the [Spring IPM Meeting Registration](#) page or call our office at (315) 536-5134. Registration is free if you register by next Tuesday, April 19. Registrations after that will cost \$10.

FLGP Virtual Tailgate Meeting

Tuesday, May 3 4:30 – 6:00 PM

Via Zoom

Our first virtual Tailgate Meeting of 2022 will be held on Tuesday, May 3. As always, the agenda for these meetings is very loose, so please come with your questions, observations, opinions about what's going on in the vineyard.

Participants will need to register before attending their first virtual meeting in order to receive the Zoom link. Registration for the online Tailgate Meetings is only required once – the link you receive when you register will work for all four online meetings this year.

Online Tailgate Meeting Registration: <https://bit.ly/3M2peJp>

The virtual and in-person Tailgate Meetings have been approved for 0.75 pesticide recertification credits. We will also need to receive an image or photocopy of your pesticide license before the first meeting that you attend. These images/copies can be sent to Brittany Griffin at bg393@cornell.edu. More information will be included in your confirmation email.

FLGP In-Person Tailgate Meeting

Tuesday, May 17 4:30 – 6:00 PM

Vine Country Farms

8531 County Route 74, Prattsburg, NY 14873

Our first in-person Tailgate Meeting for 2022 will be held on Tuesday, May 17 at Roy and Gordon Taft's farm (Vine Country Farms) in Pulteney. The agenda for these meetings is very loose, so please come with your questions, observations, opinions about what's going on in the vineyard. The DEC has approved the meeting for 0.75 pesticide recertification credits (Categories 1a, 10, 22).

Upcoming Events

Don't forget to check out the calendar on our website (<http://flgp.cce.cornell.edu/events.php>) for more information about these and other events relevant to the Finger Lakes grape industry.



Respirator Fit Testing Clinics

Thursday, May 12 Ontario County

Friday, May 13 Yates County

NYCAMH will be offering respirator fit testing clinics across the state this year. For more information, contact NYCAMH at 800-343-7527 or fittest@bassett.org.

EnoCert Classes for 2022

The EnoCert program is offered by Cornell's Enology Extension Laboratory. It is intended for current winery employees who would like to expand their practical knowledge of winery operations, or for motivated amateurs. All courses will be offered in one or two-day mix and match modules. Our goal is to provide a recognizable standard of training for participants who earn EnoCertification.

For more information, visit <https://grapesandwine.cals.cornell.edu/extension/enocert/> or email Cortni Stahl at ckm53@cornell.edu.

ENOCERT 101 Certification Course: Basic Viticulture & Enology

(Formerly New Grower/New Winery Workshop)

NEW Online format! Synchronous sessions approx. 8:30 am – 12:00 pm

May 4-5, 2022 [Register Here](#)

Overview: This course will cover the basics of grape growing from the ground up. Through live interactive lectures, participants will understand how vineyard site, climate, and trellising systems impact grape production and quality. Participants will also expand their understanding of production steps for specific wine types. Upon completing this course, attendees will learn how different wine types (white, red, rosé, sparkling) are produced, and the key decisions that need to be made to influence wine style.

ENOCERT 202 Certification Course: Tasting Room Sales Strategies

NEW Online format! Synchronous sessions approx. 8:30 am – 12:00 pm

May 11, 2022 [Register Here](#)

Overview: Most consumers' first contact with the New York wine industry is in a tasting room, so understanding their interests, motivations, and educational needs is key to promoting the industry as a whole and increasing individual sales. In this course, participants will learn how to engage guests to create a fun and profitable tasting room experience.

ENOCERT 201: Wine Sensory Analysis (In-person)

May 12-13, 2022 [Register Here](#)

Overview: Attendees will be guided through an in-depth exploration of their own sensory capabilities, and the ways in which their unique sensory perception influences their interactions with wine. Based on current sensory science, this course can serve as a starting point for new wine industry members or to complement more traditional wine evaluation programs.

2022 GDD & Precipitation

FLX Teaching & Demonstration Vineyard – Dresden, NY					
Date	Hi Temp (F)	Lo Temp (F)	Rain (inches)	Daily GDDs	Total GDDs
4/6/2022	64.2	46.0	0.01	5.1	5.6
4/7/2022	52.5	43.5	0.76	0.0	5.6
4/8/2022	56.1	41.0	0.01	0.0	5.6
4/9/2022	51.4	35.8	0.01	0.0	5.6
4/10/2022	40.6	33.8	0.02	0.0	5.6
4/11/2022	66.4	31.5	0.08	0.0	5.6
4/12/2022	63.5	45.5	0.19	4.5	10.1
Weekly Total			1.08"	9.6	
Season Total			1.09"	10.1	

GDDs as of April 12, 2021: 50.3

Rainfall as of April 12, 2021: 1.04"



Seasonal Comparisons (at Geneva)

	2022 GDD ¹	Long-term Avg GDD ²	Cumulative days ahead (+)/behind (-) ³
April	8.2	62.9	
May		254.6	
June		484.1	
July		645.5	
August		595.7	
September		359.9	
October		112.8	
TOTAL		2515.5	

¹ Accumulated GDDs for each month.

² The long-term average (1973-2021) GDD accumulation for that month.

³ Numbers at the end of each month represent where this year's GDD accumulation stands relative to the long-term average. The most recent number represents the current status.

2022 GDD & Precipitation

Precipitation

	2022 Rain ⁴	Long-term Avg Rain ⁵	Monthly deviation from avg ⁶
April	1.05"	2.83"	
May		3.12"	
June		3.55"	
July		3.43"	
August		3.20"	
September		3.49"	
October		3.40"	
TOTAL	1.05"	23.02"	

⁴ Monthly rainfall totals up to current date

⁵ Long-term average rainfall for the month (total)

⁶ Monthly deviation from average (calculated at the end of the month)

Additional Information

Become a fan of the [Finger Lakes Grape Program on Facebook](#), or follow us on [Twitter \(@cceflgp\)](#) as well as YouTube. Also check out our website at <http://flgp.cce.cornell.edu>.

Got some grapes to sell? Looking to buy some equipment or bulk wine? List your ad on the [NY Grape & Wine Classifieds website](#) today!

Finger Lakes Grape Program Advisory Committee

Eric Amberg- Grafted Grapevine Nursery
Bill Dalrymple- Dalrymple Farm
Matt Doyle- Doyle Vineyard Management
Eileen Farnan- Barrington Cellars
Chris Gerling- Cornell University Extension
Mike Collizi- E & J Gallo
Tina Hazlitt- Sawmill Creek Vineyards
Cameron Hosmer- Hosmer Winery
T.J. Brahm – Randall Standish Vineyards

Harry Humphreys- Overlook Farms
Gregg McConnell- Farm Credit East
Herm Young– Young Sommer Winery
John Santos- Hazlitt 1852 Vineyards
Steve Sklenar– Sklenar Vineyard
Justine Vanden Heuvel- Cornell University
Peter Weis – Weis Vineyards
Kim Marconi – Three Brothers Wineries & Estates

Cornell University Cooperative Extension provides equal program and employment opportunities. CCE does not endorse or recommend any specific product or service. This program is solely intended to educate consumers about their choices. Contact CCE if you have any special needs such as visual, hearing or mobility impairments.

Cornell Cooperative Extension Finger Lakes Grape Program

Hans Walter-Peterson—Team Leader
Donald Caldwell—Viticulture Technician

The Finger Lakes Grape Program is a partnership between Cornell University and the Cornell Cooperative Extension Associations in Ontario, Seneca, Schuyler, Steuben, Wayne and Yates Counties.

flgp.cce.cornell.edu



“Cornell Cooperative Extension is an equal opportunity, affirmative action educator and employer”