



July 22nd, 2020

Finger Lakes Vineyard Update

In the Vineyard

Some recent rain has brought a bit of relief to vineyards that were under water stress at this time last week. Vines that were looking a little pale are greening up and shoot tips are showing a little bit of life again. Of course, we often have more growth than we need, so a little water stress at this time of year generally isn't the worst thing in the world.



The first signs of veraison started appearing in our Marquette vines this week, about 40 days after bloom. For the past two years, we reached our official veraison date (~50% of berries were changing color) in just under 50 days for Marquette. Two years of data obviously doesn't mean a whole lot, but given that berries are starting to turn color now, it seems reasonable at this point that we'll reach veraison in a similar timeframe, which would mean veraison would be sometime around July 28. I'll try to check back on that next week.

The approach of veraison also means that another opportunity to collect petiole samples for nutrient analysis is around the corner. Be sure to you have collection bags and the correct submission forms for the lab you will be using and the tests that you want. Most commercial labs will have the forms online for printing, or will mail collection supplies and forms to you if you request them.

For a quick primer on how to collect petioles for nutrient analysis, [you can watch our short YouTube video](#) about the subject.

In This Issue:

In the Vineyard	pg. 1
IPM	pg. 2
NYCAMH Survey	pg. 4
Medical Webinars	pg. 5
Events	pg. 6
GDD	pg. 7

Pest Management

Rain on Wednesday and Thursday this week will present another opportunity for downy mildew infections to get established in vineyards. As we discussed during the Tailgate Meeting yesterday, there are a number of materials that are available for DM management, but knowing which ones to use under which circumstances can make a difference in how effective they end up being. If your plan is to apply something soon after the rains finish this week, be sure the material being used has post-infection and/or anti-sporulant activity. Materials for DM that fit this criteria would include:

- Revus (and Revus Top)
- Phosphorous acid products (e.g., Rampart, Prophyt, Phostrol)
- Ridomil
- Zampro
- Gavel

Some of the other materials are more effective at preventing infections from happening in the first place. Applying these materials soon after an infection period will likely be less effective than using something in the group above. They will be most effective being applied before the infection period begins. These would include:

- Zampro
- Ridomil
- Ranman
- Captan
- Copper formulations
- Mancozeb
- Ziram
- Gavel

You'll notice that a few materials are on both lists, meaning that they are effective as both preventative and post-infection materials. Some of these are materials that are a blend of two chemicals, like Zampro and Gavel, while Ridomil is effective at both timings on its own (one of the reasons it's such a good DM material). Wayne Wilcox also mentioned that there is evidence that the phos acid products may also have some effectiveness as preventatives, but their primary activity is still after infections are underway.

This information can all be found in [Table 3.2.1. of the 2020 Grape IPM Guidelines](#).

Pest Management (continued from page 2)

GBM Model

At this point, grape berry moth (GBM) larvae are inside berries and protected from sprays, and therefore any insecticide would have minimal effectiveness against it. Wait until the model approaches about 1450 GDDs (very late July or early August depending on location) to begin scouting, and applications should be done at around 1620 GDDs if needed.

NEWA Grape Forecast Models

Select a disease or insect:
Grape Berry Moth
State:
New York
Weather station:
Dresden (FLX TDV)
Date of Interest:
7/22/2020
Calculate

Map Results More info

Grape Berry Moth Results for Dresden (FLX TDV)

Wild Grape Bloom: 6/4/2020

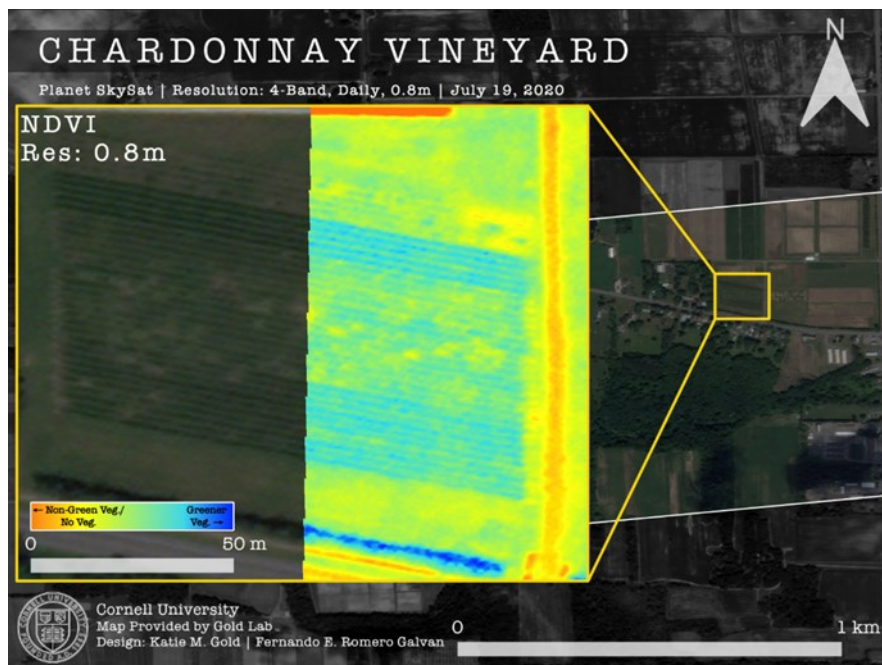
Wild Grape Bloom date above is estimated based on degree day accumulations or user input. Enter the actual date for blocks of interest and the model will calculate the results more accurately.

Accumulated degree days (base 47.14°F) wild grape bloom through 7/22/2020: 1222 (0 days missing)

Daily Degree Days for Dresden (FLX TDV)								
Base Temp	Past	Past	Current	5-Day Forecast				
	Jul 20	Jul 21	Jul 22	Jul 23	Jul 24	Jul 25	Jul 26	Jul 27
47.14F - GBM	30	25	25	28	26	27	30	32
Accumulation	1181	1206	1232	1260	1286	1313	1343	1374

NA - not available Download Time: 7/22/2020

Pest Status	Pest Management
Second generation larvae are protected within berries and completing their development.	The most effective time for treatment of second generation grape berry moth is over. Prepare to scout all vineyard blocks for grape berry moth damage when DD accumulation reaches 1470-1620 DD. During scouting, determine if the number of damaged clusters from previous generation exceeds the treatment threshold of 15%. If above threshold, control measures should be applied starting at 1620 DD.



This multi-spectral image of the grape pathology research vineyard at Cornell AgriTech shows how downy mildew infections have started to spread. The splotchy yellow pattern in the middle of the block is where DM is showing up, while the outer rows with more consistent color (blue) have little disease. Image courtesy of Katie Gold and Fernando Romero Galvan.

NYCAMH/NEC Farmworker Needs Assessment Survey

The New York Center for Agricultural Medicine and Health (NYCAMH) is a private, nonprofit agricultural organization that has been working to provide health and safety services to agricultural workers for nearly forty years. In order to understand the unique challenges that farmworkers are facing in relation to the COVID-19 pandemic, they would like to have farmworkers fill out a brief survey. The information will help them to create materials and programs that are more appropriate and helpful to both farm owners and their workers.

To gather this data, they are asking growers to share the following survey link with your workers:

NYCAMH/NEC Farmworker COVID Survey:

Please click here to take the survey in English - <https://redcap.bassett.org/redcap/surveys/?s=NH8CHXX499>

Please click here to take the survey in Spanish: <https://redcap.bassett.org/redcap/surveys/?s=LND3MR9TPD>

You can either email the link directly to your workers or contact NYCAMH to request paper copies that can be distributed to them. You can also contact NYCAMH if you would prefer to have your workers complete the survey over the phone or if they need assistance completing the survey (assistance is available in English or Spanish). [contact: Nicole Blanchard at 607.422.7527 or farmworkercovidsurvey@bassett.org]. The survey is voluntary and responses are confidential (no contact information will be requested in the survey).

You can find more information about NYCAMH and their work at their website, www.nycamh.com or www.necenter.org.

COVID-19 Webinar: What we know, reopening safely, and guidance for social situations

Tuesday, July 28, 2020

4:00 PM

Medical guidance for producers, service providers, farmworkers, and community members.

The Cornell Farmworker Program and Finger Lakes Community Health (the clinic) present a **free English presentation with Dr. Jose Canario**, M.D. In this one hour webinar, Dr. Canario will give an update on COVID-19 research, discuss safe ways to go out under “reopening”, and appropriate behavior during social settings. **Attendees are required to register** and are encouraged to submit questions in advance or raise them during the call. The English webinar will provide important information for producers, service providers, and community members. All are welcome.

Please register as soon as possible to RSVP for the event.

You will then receive instructions on how to connect to the webinar on the 28th.

[Click here to register online.](#)

If you have any other questions, please call or text 607-224-8821.

Presentación en español

COVID-19: lo que ahora sabemos, reapertura segura y guía para situaciones sociales

Martes, Julio 28 del 2020 6:00 PM (hora N.Y.)

El Programa de Apoyo a los Trabajadores Agrícolas de la Universidad de Cornell y la clínica Finger Lakes Community Health invita cordialmente a los trabajadores agrícolas a **una llamada gratuita y presentación en español con el Doctor Jose Canario**. El doctor explicará nuevos conocimientos sobre el coronavirus, cómo protegerse cuando sale, comportamientos apropiados en situaciones sociales y responderá a preguntas. Por favor invite a sus compañeros de trabajo y familiares. Todos/as son bienvenidos. **Se requiere registración de antemano.**

Regístrese lo más pronto posible para poder participar en este evento. Nosotros le enviaremos un mensaje de texto con instrucciones para conectarse a la llamada el 28. Escoja una manera para registrarse:

1. Llame o mande un mensaje de texto al (607) 224-8821. Incluya su nombre, ciudad donde vive y si tiene preguntas para el Doctor Canario.
2. [Clic sobre este enlace aquí para registrarse en la web.](#)

Upcoming Events

Don't forget to check out the calendar on our website (<http://flgp.cce.cornell.edu/events.php>) for more information about these and other events relevant to the Finger Lakes grape industry.

Tasting Room Best Practices: What's Working?
Hosted by the Cornell Craft Beverage Institute
Thursday, July 28 1:30 PM

A round table discussion featuring:
Wendy Oakes Wilson, Leonard Oakes Estate Winery
Tori Quartaro, Fox Run Vineyards
Melissa Rockwell, Sparkling Pointe

You heard from us. Now let's hear from the people on the front lines. We would like to give you all an opportunity to come together and discuss what we can do collectively to help our industry thrive. Together, may we come to conclusions that benefit us all. We hope you can join us.

Please register using the following link:
https://cornell.zoom.us/webinar/register/WN_fDmzltiATV2PxYpVCGrLQA

After registering, you will receive a confirmation email containing information about joining the webinar.

FLGP Virtual Tailgate Meeting

July 21, 2020 4:30 – 6:00 PM

Join FLGP viticulturist Hans Walter-Peterson (and the occasional guest speaker) for any or all of this year's Tailgate Meetings, held every other Tuesday afternoon during the 2020 growing season. These meetings feature a free-flow discussion of what's been happening in vineyards, timely reminders about important practices, and updates on some of the applied research being done in grapes this year. Tailgate Meetings have been approved for 0.75 NY pesticide recertification credits.

Register for this year's online Tailgate Meetings at
https://cornell.zoom.us/meeting/register/tJwvc-6qpjoiHtS5l2AQssfPXzXe_iKnx4f7

ENOCERT 101 Certification Course: Basic Viticulture & Enology

(Formerly New Grower/New Winery Workshop) (NEW Online format!)

August 18-19, 2020 [Register Here!](#)

This course will feature synchronous sessions from 9:00 AM - 12:00 PM on August 18 and August 19. There will also be pre-recorded lectures that can be viewed on your own time.

Overview: This course will cover the basics of grape growing from the ground up. Through live interactive lectures, participants will understand how vineyard site, climate, and trellising systems impact grape production and quality. Participants will also expand their understanding of production steps for specific wine types. Upon completing this course, attendees will learn how different wine types (white, red, rosé, sparkling) are produced, and the key decisions that need to be made to influence wine style.

[Go to Top](#)



2020 GDD & Precipitation

FLX Teaching & Demonstration Vineyard – Dresden, NY					
Date	Hi Temp (F)	Lo Temp (F)	Rain (inches)	Daily GDDs	Total GDDs
7/15/2020	86.6	60.7	0.00	23.7	1262.4
7/16/2020	78.9	69.7	0.25	24.3	1286.7
7/17/2020	84.1	68.9	0.00	26.5	1313.2
7/18/2020	86.9	63.5	0.00	25.2	1338.4
7/19/2020	91.3	70.5	0.21	30.9	1369.3
7/20/2020	84.1	70.2	0.00	27.2	1396.4
7/21/2020	80.2	62.8	0.00	21.5	1417.9
Weekly Total			0.46"	179.2	
Season Total			9.78"	1417.9	

GDDs as of July 21, 2019: 1283.8

Rainfall as of July 21, 2019: 11.69"



Seasonal Comparisons (at Geneva)

Growing Degree Days

	2020 GDD ¹	Long-term Avg GDD ²	Cumulative days ahead (+)/behind (-) ³
April	12	63.8	-23
May	261.5	254.4	-3
June	543.1	480.2	+1
July	539.6	643.6	+ 6
August		592.2	
September		358.3	
October		110.0	
TOTAL	1356.2	2502.6	

¹ Accumulated GDDs for each month.

² The long-term average (1973-2019) GDD accumulation for that month.

³ Numbers at the end of each month represent where this year's GDD accumulation stands relative to the long-term average. The most recent number represents the current status

Precipitation

	2020 Rain ⁴	Long-term Avg Rain ⁵	Monthly deviation from avg ⁶
April	2.54"	2.83"	-0.29"
May	1.30"	3.16"	-1.86"
June	1.44"	3.60"	-2.16"
July	2.69"	3.42"	
August		3.23"	
September		3.53"	
October		3.42"	
TOTAL	7.97"	23.19"	

⁴ Monthly rainfall totals up to current date

⁵ Long-term average rainfall for the month (total)

⁶ Monthly deviation from average (calculated at the end of the month)

COVID-19 Resources

Need information? View the following Cornell CALS and CCE Resource Pages Updated Regularly

General Questions & Links:

<https://eden.cce.cornell.edu/>

Food Production, Processing & Safety Questions:

<https://instituteoffoodsafety.cornell.edu/coronavirus-covid-19/>

Employment & Agricultural Workforce Questions:

<http://agworkforce.cals.cornell.edu/>

Cornell Small Farms Resiliency Resources:

<https://smallfarms.cornell.edu/resources/farm-resilience/>

Financial & Mental Health Resources for Farmers:

<https://www.nyfarmnet.org/>

Cornell Farmworker Program

www.farmworkers.cornell.edu

www.trabajadores.cornell.edu (en espanol)

Finger Lakes Vineyard Update

Finger Lakes Grape Program

July 22nd, 2020

Additional Information

Become a fan of the [Finger Lakes Grape Program on Facebook](#), or follow us on [Twitter \(@cceflgp\)](#) as well as YouTube. Also check out our website at <http://flgp.cce.cornell.edu>.

Got some grapes to sell? Looking to buy some equipment or bulk wine? List your ad on the [NY Grape & Wine Classifieds website](#) today!

Finger Lakes Grape Program Advisory Committee

Eric Amberg- Grafted Grapevine Nursery
Bill Dalrymple- Dalrymple Farm
Matt Doyle- Doyle Vineyard Management
Eileen Farnan- Barrington Cellars
Chris Gerling- Cornell University Extension
Luke Haggerty- Constellation Brands
Tina Hazlitt- Sawmill Creek Vineyards
Cameron Hosmer- Hosmer Winery
T.J. Brahm – Randall Standish Vineyards

Harry Humphreys- Overlook Farms
Gregg McConnell- Farm Credit East
Herm Young– Young Sommer Winery
John Santos- Hazlitt 1852 Vineyards
Steve Sklenar– Sklenar Vineyards
Justine Vanden Heuvel- Cornell University
Peter Weis – Weis Vineyards
Kim Marconi – Three Brothers Wineries & Estates

Cornell University Cooperative Extension provides equal program and employment opportunities. CCE does not endorse or recommend any specific product or service. This program is solely intended to educate consumers about their choices. Contact CCE if you have any special needs such as visual, hearing or mobility impairments.

Cornell Cooperative Extension Finger Lakes Grape Program

Hans Walter-Peterson—Team Leader
Donald Caldwell—Viticulture Technician

The Finger Lakes Grape Program is a Cornell Cooperative Extension partnership between Cornell University and the Cornell Cooperative Extension Associations in Ontario, Seneca, Schuyler, Steuben, Wayne and Yates Counties.

flgp.cce.cornell.edu

"Cornell Cooperative Extension is an equal opportunity, affirmative action educator and employer"

