

Lake Erie Regional Grape Program

PENNSTATE



CROP UPDATE - JUNE 21, 2018

Building Strong and Vibrant New York Communities
Diversity and Inclusion are a part of Cornell University's heritage. We are a recognized employer and educator valuing AA/EEO, Protected Veterans, and Individuals with Disabilities.

Dates of interest:

**Wednesday, June 27,
2018- Coffee Pot Meetings
(2 per day)**

10:00am- Betts' Farm,
7366 E. Route 20,
Westfield NY 14787

3:00pm-Beckman Farms, 2386 Avis Dr.
Harborcreek PA 16421

**July 4th! No coffee pot meetings
today-
CLEREL is closed for the
holiday.**

**Wednesday, July 11, 2018- Coffee
Pot meeting**

10:00am- CLEREL, 6592 W. Main Rd. Portland,
NY 14769

**Tuesday, August 7, 2018- LERGP Hopyard Tour-
6:00pm-7:30pm at CLEREL, light refreshments**

**Wednesday, August 15, 2018- LERGP Summer
Conference at CLEREL 9:00am-4:00pm**



Mosier-Maille Ag Consulting Soil and Crops

Jared Mosier
Consultant
(814) 923-1372

7472 Buffalo Rd.
Harborcreek, PA 16421



Dave Maille
Consultant
(814) 572-5781

mmagconsulting@gmail.com

Gowan[®] USA

TORINO[®] FUNGICIDE

The Only FRAC Group U6 Fungicide

Labeled for Grapes & Cucurbits
Highly Effective on Powdery Mildew
No Cross-Resistance
Protectant / Preventative Action

METTLE[®] 125 ME FUNGICIDE

FRAC Group 3

Labeled for Grapes
Controls Powdery Mildew,
Black Rot, & Anthracnose
Protectant + Curative Activity
Highly Systemic

Badge[®] SC Fungicide/Bactericide

Badge[®] X₂ Fungicide/Bactericide



High Quality Copper
Excellent Mixing Characteristics
Highly Active at Lower Rates
Enhanced Crop Safety

Previsto[®] Fungicide-Bactericide



Copper Ions Embedded in a
Natural Polymer Matrix
Excellent Resistance to Wash-Off
Further Improved Crop Safety Characteristics

Dave Pieczarka
315.447.0560



Torino[®] is a registered trademark of Nippon Soda Company, LTD. Mettle[®], Badge[®] SC, Badge[®] X2 are registered trademarks of Gowan USA. Previsto[®] is a registered trademark used under license by Gowan Company, LLC.

Always read and follow label directions

Business Management

Kevin Martin, Penn State University, LERGP, Business Management Educator

Lumber Prices

While it may not seem like home prices are rising precipitously in this region, I can assure you that national trends reflect increasing home prices. As home prices rise, building activity has increased. Lumber supplies have declined as demand has increased. Not long after demand for lumber shifted upward, tariffs were implemented on lumber imports for Canada. Between demand for lumber and tariffs charged on a major source of U.S. lumber, prices have increased by 50%.



Regardless of source, we are starting to see suppliers roll out higher prices on treated posts. Price increases are as much as 30% for now, with some short term delay in supply. It's possible that prices may retreat somewhat as supply catches up with demand. It's equally likely that high quality large diameter posts will exceed \$10. We were kind of waiting for this to hit grape post supplies. It took a little longer than I anticipated but I want to thank farmers for highlighting rumored changes at the retail level.

I'd say this might be a motivation to switch to steel, but it's equally likely that we will begin to see higher prices on steel posts as prices of steel have been increasing almost as much.

Ten-year t-notes are the benchmark for pricing, basically, all debt held by U.S. businesses and consumers. Nothing gets cheaper than that base rate, unless the rate is some sort of incentive to buy a good. The good news there is that demand for t-notes has retreated a bit. This gives growers more time to lock in any variable rate debt and convert as much debt as possible to a fixed interest rate. Over the long-term it is anticipated that interest costs will rise. Core inflation appears to be rising as companies and consumers access more credit and buy more goods than they have since the 2007 financial crisis. As stated in the newsletter, increases in the cost of servicing debt can undermine vineyard profitability. Fixing interest rates on debt service is a bit of a necessary evil in this market.

U.S. 10 Year Treasury Note

[ADD TO WATCHLIST](#)[CREATE ALERT](#)

2.902%
▼ -0.036

Last Updated: Jun 21, 2018 at 12:46 p.m. EDT

PREVIOUS CLOSE

2.937%



LAST: 2.902

OPEN: 2.942

DAY RANGE

2.89

DAY LOW/HIGH

2.951

2.016

52 WEEK LOW/HIGH

3.127

OVERVIEW

CHARTS

HISTORICAL QUOTES

IPM

Tim Weigle, NYSIPM, Cornell University, LERGP Team Leader



Grape Rootworm feeding patterns on grape leaf



Abby looking for GRW after the top wire had been shaken to release the insects onto catchframe

Grape Rootworm

TAKE HOME MESSAGE - We are finding grape rootworm in vineyards with a history of grape rootworm. If you have not scouted, now is the time. If you find the chain like foliar feeding of the adults, consider applying an insecticide to limit the population of this pest.

There are a number of active ingredients that can be used for grape rootworm adults at this time of year. Sevin is labeled and Admire Pro, Danitol, Leverage 360 and Sniper are available through FIFRA 2(ee) recommendations. You need to have the FIFRA 2(ee) recommendation in your possession if you use one of these products. They can be found on line at <http://lergp.com/ipm/>. Check out this week's podcast for more information on our weekly grape rootworm scouting at <http://lergp.com/podcasts/>.

Grape Berry Moth

TAKE HOME MESSAGE – According to the Phenology based Degree Day model found on NEWA there are no areas where an insecticide application would be effective against grape berry moth populations. The next timeframe for treatment, if necessary, will be 810 DD.

Most areas are forecasted to pick up about 20 DD per day according to the model so we can expect to hit 810 DD around the Fourth of July weekend using the predicted wild grape bloom date from

NEWA Location	Wild grape bloom date*	DD Total on June 21, 2018	Forecasted DD for June 26, 2018
Versailles	May 29, 2018	479	581
Hanover	May 29, 2018	491	592
Sheridan	May 28, 2018	528	629
Silver Creek	May 31, 2018	407	495
Dunkirk Airport	May 30, 2018	448	542
East Fredonia	May 29, 2018	480	581
Fredonia	May 30, 2018	413	514
Portland Escarp.	May 29, 2018	488	587
Portland	May 30, 2018	460	559
East Westfield	May 30, 2018	452	549
Westfield	May 30, 2018	455	552
Ripley	May 29, 2018	500	602
North East Escarp	May 29, 2018	491	591
Harborcreek	May 29, 2018	507	608
North East Lab	May 30, 2018	478	578
Erie Airport	May 27, 2018	593	697
Lake City	May 29, 2018	500	606
Ransomville	May 30, 2018	468	573
Burt	June 1, 2018	346	439
Somerset	May 31, 2018	416	519
Corwin	May 31, 2018	418	526
North Appleton	June 3, 2018	322	423
* Estimated date provided by NEWA website			

NEWA. For the southern portion of the belt, it appears that the wild grape bloom date provided by NEWA is pretty spot on. However, for the most accurate model results input the observed wild grape bloom date for your region. At the Coffee Pot meeting in Wilson, NY on Wednesday, June 20, we heard reports of Concord bloom occurring early in the first week of June. so it looks like the predicted wild grape bloom might be a little late this year in Niagara County.

PA Update

Andy Muza, Extension Educator, Penn State

In the Vineyard (6-21-18) –

Diseases – If you have not yet applied your 1st POSTBLOOM fungicide application then do so as soon as possible. The 1st POSTBLOOM spray should be applied no later than 14 days, or less if the weather is wet, after the Immediate Prebloom spray. DO NOT stretch spray intervals beyond 14 days during this critical period for protection of the clusters. (Check the NEWA station <http://newa.cornell.edu> closest to your vineyard blocks for 5-day weather forecasts and for disease models). Fungicide products which are **highly effective** against all of our major diseases (Phomopsis, Black Rot, Downy Mildew and Powdery Mildew) should be used.

Powdery Mildew (PM) - Small patches of PM lesions are showing up on leaves in Concord vineyards. This week I am also seeing PM on young Concord berries scattered throughout vineyards (Figure 1).

Downy Mildew (DM) - DM lesions were observed, for the first time this season, on a few leaves in a block of Delaware (Figures 2 & 3). A leaf lesion was also found yesterday

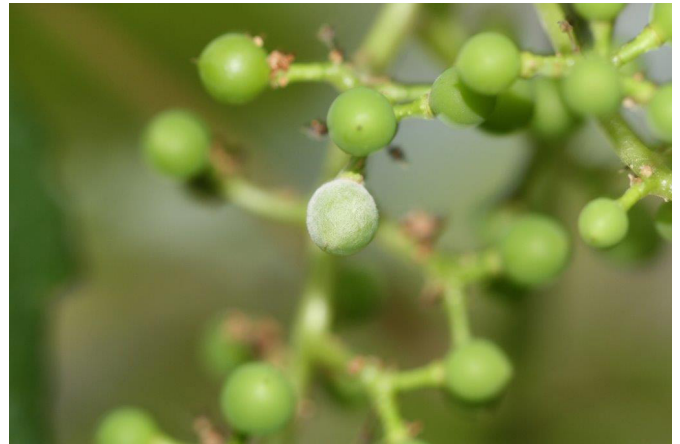


Figure 1. Powdery Mildew on young Concord berry. Photo- Andy Muza- Penn State



Figure 2. Downy Mildew lesion on Delaware leaf. Photo- Andy Muza- Penn State

on a table

grape variety in Niagara County, NY. Varieties that are highly susceptible to DM should be monitored to determine if DM is present (see: [2018 New York and Pennsylvania Pest Management Guidelines for Grapes](#), Table 3.1.2 pages 16 -17).

Grape Berry Moth – GBM larval webbing was observed in Concord clusters at a few sites in border rows next to woods (Figure 4). GBM Degree Day calculations at NEWA sites across the region show that an insecticide application for the second generation of GBM is still a few weeks away. However, begin checking the GBM Degree Day Model <http://newa.cornell.edu/index.php?page=berry-moth> at the

NEWA site closest to your vineyards to determine when to spray high risk areas or when to begin scouting low and intermediate risk blocks.

Grape leafhopper (GLH) – I am still only seeing a minimal amount of GLH injury in Erie County, PA but did observe nymphs (immature, wingless stage) on the undersides of leaves for the first time this season. I also received pictures of potato leafhopper nymphs and possible leaf injury (cupping and yellowing of leaves) on wine grapes from a grower in Erie County, PA.



Figure 3. Downy Mildew sporulating on underside of Delaware leaf. Photo- Andy Muza- Penn State



Figure 4. Young Concord berries webbed together by a grape berry moth larva. Photo- Andy Muza- Penn State

North East PA Update

Bryan Hed, Research Technologist, Lake Erie Grape Research and Extension Center

Weather: Storms over the past week have moved our rainfall total to 1.8" for the month of June. We have accumulated about 343 growing degree days during the first 3 weeks of June. We now have 782.5 gdds as of April 1, definitely ahead of average. There is rain in the forecast for Friday and Saturday, with temperatures staying somewhat below average over the weekend.

Phenology: The heat last week moved Concord and Niagara through bloom and we are in the midst of that period of early berry development when fruit are most susceptible to all major fungal grape diseases.

Diseases: Infection periods for black rot, Phomopsis and powdery mildew were generated on June 10, 13, and 18-19. Protect your crop with a well-timed post bloom fungicide application. Do not stretch the interval between the immediate pre-bloom and first post bloom spray beyond 14 days (less is better). This is a no brainer; use best materials you can afford, spray every row, bump up gallonage to maximize coverage, etc. After the first post bloom spray, reassess your situation by scouting and closely watching the weather forecast. Black rot infections that slipped through your spray program with the recent rain will become manifest about 14 days after the infection period, and stay vigilant if conditions remain wet. If scouting reveals that you have black rot leaf infections, keep spray intervals to a minimum throughout the susceptibility period, or fruit loss is likely to occur. Black rot leaf lesions, especially on leaves at nodes in the fruit zone, are potent sources of inoculum for fruit infections.

Downy mildew has been observed by Andy Muza at one location which means that at least in some places, conditions for an infection period have been met and disease cycles are afoot. If conditions remain wet, we will likely see it pop up in other locations as well. If conditions dry out, it may retreat and lay low until rainfall returns. Varieties susceptible to downy mildew (like Niagara) can be subject to fruit loss from this disease for about a month after bloom, and both Concord and Niagara fruit can get hit with black rot for about 4-5 weeks after bloom. If you do a good job controlling these diseases through the early fruit development period, we may be able to ease up on the fungicide applications if conditions dry out.

PA VinES

There is a new program available to grape growers in the Lake Erie Watershed. PA VinES (Vested in Environmental Sustainability) is a voluntary program that promotes sustainable viticulture practices through a grower self-assessment workbook. The workbook looks at the economic and environmental impacts of grape production on each operation and serves as an educational resource for the grower. After completing the workbook, the participant is eligible to apply for available Growing Greener grant funds to install best management practices on their operation, such as cover cropping and stabilized access roads. The goal of the program is to reduce the environmental impact of the approximately 10,000 acres of vineyards in the region by limiting the amount of sediments and excess nutrients that enter our waterways. Contact the Erie County Conservation District (814-825-6403) for your free workbook to get started!

Turns heads and tight corners.
Designed to turn a profit too.



A NEW WORLD DEMANDS NEW HOLLAND.

Sleek and low profile T4F narrow tractors maneuver easily in the narrow rows of orchards and nut groves. And, since New Holland's SuperSteer™ FWD axle is standard equipment, you get the shortest FWD row-to-row turning available, plus the advantage of Automatic Traction Control. You also get more power, fuel efficiency, comfort and safety.

- Choice of an open platform or Blue Cab™ options with available Level 4 protection* from dust, aerosols and vapors
- Stable and sure footed for any job on any terrain.
- The high torque 207 cubic inch engine provides great fuel economy with a constant max power from 1,900 to 2,300 rpm

Learn more about these 73 to 93 PTO HP tractors at www.newholland.com/na

NEW HOLLAND
AGRICULTURE
EQUIPPED FOR A NEW WORLD™

Larry Romance & Son, Inc.
2769 Rt 20, Sheridan, New York 14135
www.larryromanceandson.com
716-679-3366

*In accordance with European EN 15805-2:2009 filter and EN 15805-1:2009 pressurization © 2016 CNH Industrial America LLC. All rights reserved. New Holland is a trademark registered in the United States and many other countries, owned by or licensed to CNH Industrial N.V. or its subsidiaries or affiliates. Equipped For A New World is a trademark in the United States and many other countries, owned by or licensed to CNH Industrial N.V., its subsidiaries or affiliates.

Clover Hill Sales LLC

10401 Sidehill Road, North East, PA 16428
814-725-3102
cloverhill@roadrunner.com

www.cloverhillsales.com

dw DURAND WAYLAND
HIGH PERFORMANCE PACKING SYSTEMS

WOODS
Woods Equipment Company

E EDWARDS
EQUIPMENT COMPANY

CENTRAL BOILER

TISCO

STOLTZFUS SPREADERS

**Harvester Parts and Belting
Southern Yellow Pine Posts
And So Much More!**

2018 Application Period - Erie County Farmland Preservation Program

The County of Erie is a proud participant in Pennsylvania's nationally recognized farmland preservation program. With the support of interested landowners, the program helps to permanently preserve farms for agricultural production. It helps to guarantee a future food supply and contributes to a healthier economy. It also assures that a way of life cherished by many Erie County residents will continue for generations to come.

This program is voluntary. In order to apply for the agricultural land conservation easement program, a landowner must complete and submit an application. Through the program, permanent easements are purchased. Landowners remain in possession of the land, but the easement limits subdivision, nonagricultural development and other uses inconsistent with commercial agriculture.

The Erie County Agricultural Land Preservation Board will be accepting applications from June 1, 2018 through September 30, 2018. Applications may be obtained from the Erie County Department of Planning, or from the department's website, <https://www.eriecountypa.gov/county-services/county-offices/planning-department/farmland-preservation/farmland-preservation-overview.aspx>

For more information, contact John McGranor at (814) 4517329 or jmcgranor@eriecountypa.gov.

Completed applications should be submitted to:

The Erie County Department of Planning
150 E. Front Street, Suite 300
Erie, PA 16507

LaPorte
Farm Equipment
"Large and small, we sell them all"
Sales - Parts - Service
Westfield NY (716) 326-4671
CASE IH
AGRICULTURE
www.laportefarmequipment.com

Custom Built 2 Tank Weed Sprayer



We sell and service CaseIH tractors, Oxbo Harvesters, and Turbomist sprayers. We also custom manufacture single and dual tank sprayers, pre-pruners, brush sweepers, wire winders.



2018 eNEWA Grape Subscription Sign-Up

Subscriber information

Name _____

Email address _____

City _____

Select Location(s) (circle as many as you like, or write in below)

<u>Lake Erie</u>	<u>Lake Erie</u>
Appleton, North	Ransomville
Burt	Ripley
Corwin	Sheridan
Dunkirk	Silver Creek
East Fredonia	Somerset
East Westfield	Versailles
Erie	Westfield
Fredonia	
Hanover	Other: Please fill in
Harborcreek	
Lake City	
North East Escarpment	
North East Lab	
Portland	
Portland Escarpment	

Select eNEWA Delivery Times (write in times below) Delivery requests should be on the hour.



LERGP

2018 COFFEE POT MEETING SCHEDULE

Date	Time	Location	Address
May 2, 2018	10:00am	Clover Hill Farm	10401 Sidehill Rd. North East PA 16428
May 9, 2018	10:00am	Ann & Martin Schulze Winery	2090 Coomer Rd. Burt NY 14028
May 16, 2018	10:00am	Sprague Farms	12435 Versailles Rd. Irving NY 14081
May 23, 2018	10:00am	NE Fruit Growers	2297 Klomp Rd. North East PA 16428
May 30, 2018	10:00am	Double A Vineyards	10277 Christy Rd. Fredonia NY 14063
June 6, 2018	10:00am	Fred Luke Farm	1755 Cemetery Rd. North East PA 16428
June 6, 2018	3:00pm	Thompson Ag	Corner of Hanover and Dennison, Silver Creek NY 14136
June 13, 2018	10:00am	Jim Vetter Farm	12566 Versailles Rd. Irving NY 14081
June 13, 2018	3:00pm	Jerry Chessman Farm	11725 Middle Rd. North East PA 16428
June 20, 2018	10:00am	Duane Schultz	3692 Wilson Cambria Rd. Wilson NY 14172
June 20, 2018	3:00pm	Brant Town Hall	1272 Brant Rd. Brant NY 14027
June 27, 2018	10:00am	Betts Farm	7366 East Route 20 Westfield NY 14787
June 27, 2018	3:00pm	Beckman Farms	2386 Avis Dr. Harborcreek PA 16421
July 11, 2018	10:00am	CLEREL	6592 W. Main Rd. Portland NY 14769
July 18, 2018	10:00am	Tom Tower Farm	759 Lockport St. Youngstown NY 14174
July 25, 2018	10:00am	Ziesenheim	8760 W. Lake Rd. Lake City PA 16423



INSURING GRAPES

NY, 2018

Crop insurance is a safety net for farmers that helps you **manage risk**. If you have a crop failure, crop insurance can help you farm again next year.

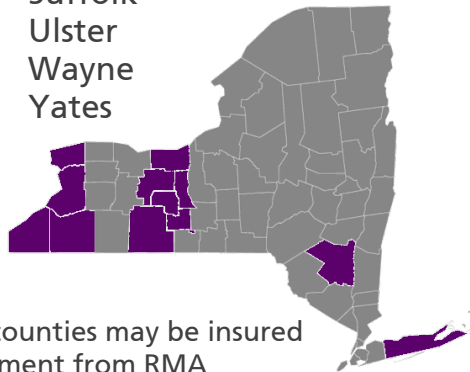
Important Insurance Deadlines

- **Nov. 20, 2017:** Sales Closing, Policy Change, Cancellation, Termination Date
- **Jan. 15, 2018:** Acreage / Production Report Date
- **Aug. 15, 2018:** Premium Billing Date
- **Nov. 20, 2018:** End of Insurance Period



Over 40 grape varieties are insurable in these counties:

Cattaraugus	Suffolk
Chautauqua	Ulster
Erie	Wayne
Niagara	Yates
Ontario	
Schuyler	
Seneca	
Steuben	



Grapes in other counties may be insured by written agreement from RMA

NYS Grape Crop Insurance Performance



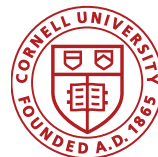
Learn more & sign up:

To sign up, contact a crop insurance agent. Find an agent using the Agent Locator tool at rma.usda.gov/tools/agent.html

Find crop insurance information at ag-analytics.org/cropinsurance/

Cornell University delivers crop insurance education in New York State in partnership with the USDA Risk Management Agency.

Diversity and Inclusion are a part of Cornell University's heritage. We are an employer and educator recognized for valuing AA/EEO, Protected Veterans, and Individuals with Disabilities.



LERGP Links of Interest:

Go to <http://lergp.cce.cornell.edu/> for a detailed calendar of events, registration, membership, and to view past and current Crop Updates and Newsletters.

LERGP Web-site:

<http://lergp.com/>

Cornell Lake Erie Research & Extension Laboratory Facebook page

<https://www.facebook.com/Cornell-Lake-Erie-Research-and-Extension-Laboratory-678754995584587/?fref=ts>

Efficient Vineyard Web-site:

<https://www.efficientvineyard.com/>

Table for: Insecticides for use in NY and PA:

<http://lergp.cce.cornell.edu/submission.php?id=69&crumb=ipm|ipm>

Crop Estimation and Thinning Table:

http://nygpadmin.cce.cornell.edu/pdf/submission/pdf65_pdf.pdf

Appellation Cornell Newsletter Index:

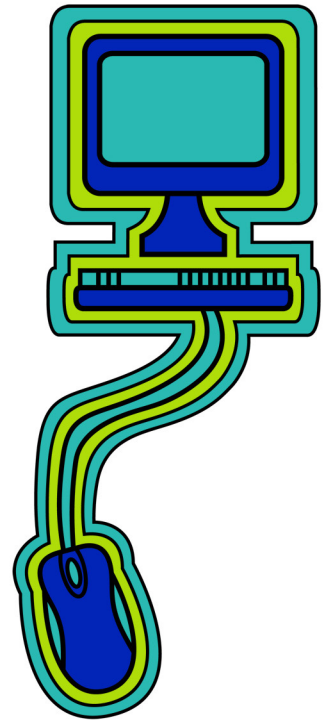
<http://grapesandwine.cals.cornell.edu/cals/grapesandwine/appellation-cornell/>

Veraison to Harvest newsletters:

<http://grapesandwine.cals.cornell.edu/cals/grapesandwine/veraison-to-harvest/index.cfm>

NEWA:

<http://newa.cornell.edu/>





Lake Erie Regional Grape Program Team Members:

Andy Muza, (ajm4@psu.edu) Extension Educator, Erie County, PA Extension, 814.825.0900

Tim Weigle, (thw4@cornell.edu) Grape IPM Extension Associate, NYSIPM, 716.792.2800 ext. 203

Kevin Martin, (kmm52@psu.edu) Business Management Educator, 716. 792.2800 ext. 202

This publication may contain pesticide recommendations. Changes in pesticide regulations occur constantly, and human errors are still possible. Some materials mentioned may not be registered in all states, may no longer be available, and some uses may no longer be legal. Questions concerning the legality and/or registration status for pesticide use should be directed to the appropriate extension agent or state regulatory agency. Read the label before applying any pesticide. Cornell and Penn State Cooperative Extensions, and their employees, assume no liability for the effectiveness or results of any chemicals for pesticide usage. No endorsements of products are made or implied.

Cornell University Cooperative Extension provides equal program and employment opportunities.

Contact the Lake Erie Regional Grape Program if you have any special needs such as visual, hearing or mobility impairments.

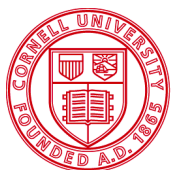
CCE does not endorse or recommend any specific product or service.

THE LAKE ERIE REGIONAL GRAPE PROGRAM at CLEREL

6592 West Main Road

Portland, NY 14769

716-792-2800



Cornell University
Cooperative Extension

PENNSTATE



College of
Agricultural
Sciences