



## The Lake Erie Regional Grape Program



*Crop Update January 25, 2018*



Building Strong and Vibrant New York Communities

Diversity and Inclusion are a part of Cornell University's heritage. We are a recognized employer and educator valuing AA/EEO, Protected Veterans, and Individuals with Disabilities.

*Registration for LERGP has been underway for a few months but I am still missing some enrollments. Please don't leave us, we have another great year of programming planned and want to share it with you!*

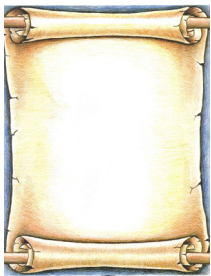
*I have included a link to a printable form to mail in and a link to use to enroll on-line. If you have questions about the enrollment process, you can call the CCE office in Jamestown at 716-664-9502.*



ENROLLING IS AS  
EASY AS...  
**1, 2, 3!**

*Link for on-line enrollment- can pay with a credit card*

<http://chautauqua.cce.cornell.edu/agriculture/agriculture-program-subscription>



*Link for printable mail in form:*

<http://chautauqua.cce.cornell.edu/resources/agriculture-program-subscription-2018>

### *Other dates of interest:*

*Tuesday, February 6, 2018 -Farm Credit Meeting*

*Cornell Cooperative Extension Building, 4487 Lake Ave. Lockport NY 14094*

*Juice Grape Grower Session will be held from 9:00am-11:30AM*

*Winery Session will be held from 1:00pm-3:30PM*

*Thursday, February 15- 10:00am- Reporting Session for Projects and Proposals*

*Location: CLEREL*

*Wednesday, March 14, 2018- LERGP Winter Grower Conference*

*William's Center, SUNY Fredonia*

*Wednesday, March 28, 2018-Core Pesticide Training and License test-see info in Crop Update*

*Location: CLEREL*

2018  
*Winter Grape Grower Conference*  
*Wednesday, March 14, 2018*  
*William's Center-SUNY Fredonia Campus*  
*8:00am-4:00pm*

Use the printable registration form on page 4 or

**Register On-line!**

[https://lergp.cce.cornell.edu/event\\_preregistration.php?event=335](https://lergp.cce.cornell.edu/event_preregistration.php?event=335)



2018 Lake Erie Regional Grape Program Growers' Conference  
March 14, 2018  
Williams Center  
SUNY at Fredonia Campus

## Agenda

6:30 AM	Tradeshow set up begins
7:00 AM	Registration and Tradeshow open
7:50 AM	Welcome
8:00 - 9:00 AM	Ensuring Vine/Crop Load Balance <i>Terry Bates, LERGP, Cornell University</i>
9:00 – 9:30 AM	Climate Influences on Concord Grape Phenology, Berry Weight and Berry Composition <i>Golnaz Badr, LERGP, Cornell University</i>
9:30 – 10:00 AM	Change Your Name, Make More Money. <i>Kevin Martin, LERGP, Penn State University</i>
10:00 – 10:30 AM	Break
10:30 – 11:30 AM	Update on Changes to the Worker Protection Standard Regulations <i>Michael Nierenberg, NYS Department of Environmental Conservation</i>
11:30 – Noon	Why Were My Leaves Black? <i>Andy Muza, LERGP, Penn State University</i>

## **Noon- 1:30 PM      Lunch and Visit Tradeshow**

Breakout sessions held from 1:30 – 2:30 PM and 2:45 to 3:45 PM

Breakout Session 1 1:30 – 2:00 PM	Integrated Pest Management Disease Management Update <i>Bryan Hed, LERGP, Penn State University</i>
2:00 – 2:30 PM	Insect Management Update <i>Jody Timer, LERGP, Penn State University</i>
2:45 – 3:45 PM	How to legally spray Concord grapes without a respirator – a response to the updated WPS regulations. <i>Tim Weigle, LERGP, NYS IPM Program, Andy Muza, Bryan Hed and Jody Timer, LERGP, Penn State University</i>
Breakout Session 2 1:30 – 2:30 PM	Variable Rate Management/Efficient Vineyard Topic and Speaker(s) to be determined
2:45 – 3:45 PM	Topic and Speaker(s) to be determined
3:45 PM	Adjourn

# LAKE ERIE REGIONAL GRAPE PROGRAM

## 2018 GRAPE GROWERS' CONFERENCE REGISTRATION FORM

SUNY Fredonia Williams Center

Wednesday, March 14, 2018

**Deadline for registration is Friday, March 2, 2018.**

Name (1<sup>st</sup> attendee) \_\_\_\_\_ \$ \_\_\_\_\_

Farm Name \_\_\_\_\_

Address, City, State, Zip Code \_\_\_\_\_

Phone \_\_\_\_\_ E-mail \_\_\_\_\_

Are you enrolled in Lake Erie Regional Grape Program (LERGP)? Yes \_\_\_\_\_ No \_\_\_\_\_

REGISTRATION FEES	
LERGP Member 1 <sup>st</sup> attendee	\$ 50.00
Additional attendee on same farm	\$ 40.00
Non- member	\$100.00

### Additional Attendees:

	\$
	\$
	\$
	\$
	\$

\*Please add a **\$25.00 late fee** for each reservation made after March 2, 2018

**TOTAL \$** \_\_\_\_\_

Please make check payable to **LERGP (Lake Erie Regional Grape Program)** and mail to: Kate Robinson  
*(US funds only)* LERGP  
 6592 W Main Rd  
 Portland NY 14769

Name \_\_\_\_\_ NY DEC/PA PDA NUMBER \_\_\_\_\_

Name \_\_\_\_\_ NY DEC/PA PDA NUMBER \_\_\_\_\_

Name \_\_\_\_\_ NY DEC/PA PDA NUMBER \_\_\_\_\_

Date Ck. Rec'd	Amount

Call Kate at 716-792-2800 ext 201 with any questions.



# Business Management

Kevin Martin, Penn State University, LERGP, Business Management Educator

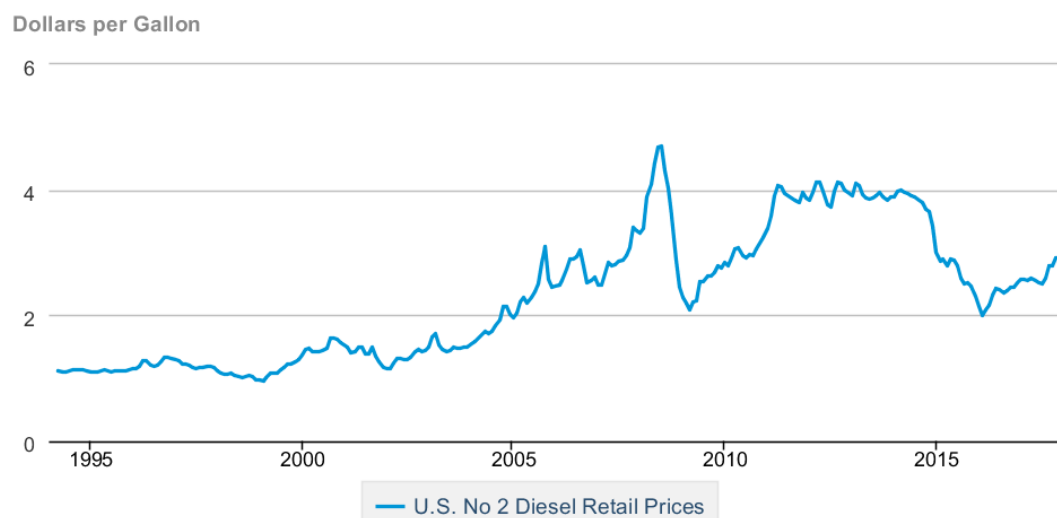
## 2018 Input Costs

Fairly low commodity prices have been allowing the industry to sustain low juice grape prices for as long as it has. For the most part, it appears those low commodity prices will continue to 2018.

Fertilizer prices have been jumping up and down the past couple of years but the pricing and volatility remains calm compared to a decade ago. Overall, a farm that needs to invest in a typical basket of fertilizer will not spend significantly more than last year. Individual results may vary. A specific nutrient or trucking expense could result in higher fertilizer prices for certain farms with specific needs.

Fuel and trucking costs are a notable exception to low commodity prices. Currently diesel prices remain 40% lower than peak prices in 2008. However, they've increased nearly 50% in the last year. Since 2008 many large farms in the region have grown. Those large vineyards have shifted costs from labor to mechanized practices. Tier 4 engines are starting to become more commonplace. Larger multi-row equipment is also covering more acres on these farms. In general, the number of gallons of fuel per acre has increased somewhat. A 50% increase in fuel cost will likely be noticed, particularly by mechanized growers. For a historical look at retail diesel prices, take a look at figure 1. EIA does not track the cost of off-road diesel but the price of both products tend to follow very similar patterns.

### U.S. No 2 Diesel Retail Prices



Source: U.S. Energy Information Administration

# IPM

Tim Weigle, NYSIPM, Cornell University, LERGP Team Leader

## Your Opinion is Important!

How many times have you heard that prior to someone asking you to participate in a survey? Well, I do not want to disappoint by not following up and offering you the chance to provide your input on the Network for Environment and Weather Applications (NEWA).

I know that surveys have become the bane of many people's existence but I will tell you that they are very important when it comes to writing grants and planning educational activities. A lot of the programming put on by the Lake Erie Regional Grape Program and the NYS IPM Program is possible due to funding through grants from external sources like the Lake Erie Processor group (National Grape, Constellation Brands and Walker's Fruit Basket) as well as, state and federal sources. These groups typically fund projects that address priorities developed by growers and members of the industry. That is why your input is so valuable. Please take a few minutes to fill out the 5-question survey found at the following link.



[NEWA Survey 2018](#)

I thank you in advance for your participation in the survey.

If you have any questions, please contact Tim Weigle at [thw4@cornell.edu](mailto:thw4@cornell.edu)

# PA Update

Andy Muza, Extension Educator, Penn State

## “Good Bugs vs Bad: Using Biological Controls in Spotted Wing Drosophila Management,”

Spotted Wing Drosophila (SWD) is an invasive pest that has challenged producers of berries and cherries across the United States and around the world in recent years. A team of researchers from across the United States has been collaborating to improve management of spotted wing Drosophila. A key component of the project is to learn the role of biological control in controlling spotted wing Drosophila and to discover new biocontrol agents.

“Good Bugs vs Bad: Using Biological Controls in SWD Management,” is a **free webinar that will be offered on February 23, 2018 from 12 – 1 PM**. This webinar will include an overview of the project, an update on the native biocontrol agents that have been found in surveys at farms from Oregon to Maine, and the latest information on their search for parasitic wasps from Asia.

This webinar is free and open to all thanks to funding from the USDA Specialty Crop Research Initiative.

**Register with your name and email address by selecting the “CTRL” key and clicking on:**

**Good Bugs vs Bad: Using Biological Controls in SWD Management.**

# Viticulture

Jacqueline Dresser, LERGP Viticulture Extension Support Specialist

## New kids on the block: Elvira, St. Vincent and Ives

Diversification is not a concept reserved for a stock portfolio. As the word “surplus” is becoming annually associated with Concord juice, growers may be thinking about what other varieties may be well suited to the region and hold promise for marketing potential. Three varieties have been gaining attention locally, Elvira, St. Vincent and Ives. New plantings of Ives and St. Vincent at CLEREL should be coming into production in the next couple of years, enabling research to share with the Lake Erie grower community. To view our podcast about the new plantings, click [here](#).

The cultivar Elvira (*Vitis riparia*), comes from a cross between Taylor and Martha (*Vitis riparia* x *Vitis labrusca* hybrid) and was first planted in Missouri in 1863, bearing fruit in 1869<sup>1</sup>. It is a popular white variety for bulk wine production and ripens at about the same time as Concord, with similar cold hardiness. The vines tend to be vigorous and set heavy crops which may require thinning to bring the vines into balance and prevent degradation of vine size over time<sup>2</sup>. Berries are medium sized and prone to cracking as they ripen, due to their delicate skins. If harvested early in the harvest window, Elviras may be used in lower-acid blends to bring up acidity. On their own, Elvira grapes produce light and fruit forward wines with slight foxy notes<sup>1</sup>. Clusters are medium sized with a single shoulder and compact, which increases their susceptibility to Botrytis and black rot. Crown gall, downy mildew and powdery mildew are larger threats for Elviras than Phomopsis and Eutypa dieback<sup>3</sup>. Overall, cultivation practices resemble that of other riparia varieties, so they are a viable option to consider for new plantings without considerable operational changes.

Ives (*Vitis labrusca* x *unknown*), named for its breeder, Henry Ives, produces black grapes typically used to introduce color in red wines, jellies and juices. It was first released in 1850 and was popular for use in port-style wines after prohibition. Wines produced from Ives share some of the characteristics of Concord wines, with foxy notes and deep red color. These vines track similarly to Concord throughout the season in terms of phenology but tend to ripen slightly earlier. They can be trained to a high wire trellis system. The major limitation to Ives production is in its sensitivity to increasing air pollution<sup>5</sup>.

St. Vincent (est. *Vitis vinifera*) was an accidental cultivar found near a recently removed row of Pinot Noir (*Vitis vinifera*) in Missouri with Chambourcin (*Vitis vinifera*) vines growing nearby. Despite those clues, its parentage is not explicitly known. Though its discovery was reported in 1973, St. Vincent did not appear on the list of approved grape variety names until 2006<sup>4</sup>. Berries are large and deep purple or blue in color, in loose clusters (weighing an average of 0.41lbs in research trials) that are only slightly sensitive to Botrytis bunch rot and black rot and moderately susceptible to powdery and downy mildews. A ten year trial at Southwest Missouri State University presented 18.6°Brix, 3.09pH and 10.3g/L titratable acidity averages for St. Vincent<sup>4</sup>. It is moderately cold hardy and has been grown in New York state on high wire trellis, either own-rooted or grafted to rootstock.

**\*\*see photo and credits on next page\*\***





**Elvira, Ives and St. Vincent, Taken from [Double A Vineyards](#)**

<sup>1</sup>Hedrick, U.P., Booth, N.O., Taylor, O.M., R. Wellington and M.J. Dorsey. 1908. The Grapes of New York: Report of the New York agricultural experiment station for the year 1907. J.B. Lyon Company, Albany, New York.

<sup>2</sup>Bradt, O.A., R. F. Crowther, G. Hostetter, A. Neff, J. Monroe, and R. Moyer. circa 1975. Grape cultivar descriptive catalog. The Ontario Grape Research Committee. Vineland, Ontario, Canada.

<sup>3</sup>Reisch, B.I., Pool, R.M., Peterson, D.V., Martens, M.H. and Henick-Kling, T. 2000. Wine and juice grape varieties for cool climates. Information Bulletin 233. Cornell Cooperative Extension.

<sup>4</sup>Smiley, L., Domoto, P., Nonnecke, G. and Miller, W. 2008. Cold climate cultivars: A review of cold climate grape cultivars. Iowa State University, Ames, IA, USA.

<sup>5</sup>J. Robinson, J. Harding, J. and Vouillamoz, J. 2013. Wine Grapes - A complete guide to 1,368 vine varieties, including their origins and flavours. Penguin, UK.



**Cornell University**  
**Cooperative Extension**

**Cornell and Penn State Cooperative Extension**

**Lake Erie Regional Grape Program**

6592 West Main Rd, Portland, NY 14769  
662 N. Cemetery Road, North East, PA 16428-2902  
850 East Gore Road, Erie, PA 16509-3798

716-792-2800  
814-725-4601  
814-825-0900

**“CORE” Pesticide Training and Pesticide Applicators License Exam**  
**March 28, 2018**  
**Cornell Lake Erie Research and Extension Laboratory (CLEREL)**  
**6592 West Main Road**  
**Portland, NY 14769**

***Space is limited ---Pre-registration is required for both sessions***

**CORE TRAINING**

**WHEN:** Wednesday, March 28, 2018 from 9 AM to 12:15 PM

**WHERE:** CLEREL Meeting room

**COST:** \$15

3.0 Pesticide recertification credits in the CORE category have been applied for.

The CORE training session is also designed as a review prior to taking the Commercial or Private Pesticide Applicator exam but is not required prior to taking the exam.

Preregistration for the training using the enclosed course registration form is required by **March 26, 2017.**

Or sign up on-line at <https://lergp.cce.cornell.edu>

**Questions on the training session should be directed to Kate at (716) 792-2800 ext 201**

**PRIVATE AND COMMERCIAL NYS PESTICIDE EXAMINATIONS**

**WHEN:** 1 PM

**WHERE:** CLEREL Meeting room

**COST:** \$100

**REGISTRATION:** NYS Department of Environmental Conservation (DEC) requires you to register for entrance to the exam session with the Buffalo DEC office at (716) 851-7220.

**DEADLINE for registration to take the test is March 9, 2018. To register, call the DEC at (716) 851-7220. You will then be sent an exam application form and test instructions by the DEC.**

Any questions about your eligibility to take an exam or the status of your current certification should be directed to the Buffalo DEC office at (716) 851-7220.

Commercial Applicators: You will need the “Core Manual” and the category manual for the area(s) in which you will be certifying.

Private Applicators: You will need to get the “Core Manual” plus the private category manual for the area in which you will be certifying.

CORE and category training manuals are available through the Cornell Store by calling (800) 624-4080 or the [web-site link: http://store.cornell.edu/c-876-manuals.aspx](http://store.cornell.edu/c-876-manuals.aspx)

**Questions on Pesticide Examinations should be directed to the NYS DEC at (716) 851-7220.**

**2018 CORE PESTICIDE TRAINING  
REGISTRATION FORM  
Wednesday March 28, 2018**

Space is limited – pre-registration is required.

To register for the training, fill out and return registration form to:

ATTN: Kate  
Lake Erie Regional Grape Program  
CLEREL  
6592 West Main Road  
Portland, NY 14769

Name(s) \_\_\_\_\_  
\_\_\_\_\_  
\_\_\_\_\_

Address \_\_\_\_\_  
\_\_\_\_\_

Phone \_\_\_\_\_

Number attending \_\_\_\_\_

**Registration and payment by Monday, March 26, 2018 (\$15 per person)**

\_\_\_\_\_

Make Checks Payable to: Lake Erie Regional Grape Program

IMPORTANT: This registration is for the CORE training session only.

**If you wish to take the exam for a NYS DEC Pesticide Applicator's License you must contact the Buffalo office of the NYS DEC by calling Mike Nierenberg or Shaun Conrad at (716) 851-7220 no later than March 9, 2018 to provide ample time for them to provide you with an exam application form and test instructions.**



# INSURING GRAPES

NY, 2017

**Crop insurance** is a safety net for farmers that helps you **manage risk**. If you have a crop failure, crop insurance can help you farm again next year.

## Important Insurance Deadlines

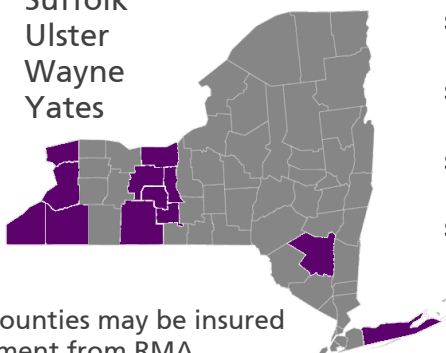
- **Aug. 15, 2017:** Premium Billing Date
- **Nov. 20, 2017:** Sales Closing, Policy Change, Cancellation, Termination Date
- **Nov. 20, 2017:** End of Insurance Period
- **Jan. 15, 2018:** Acreage / Production Report Date



## Over 40 grape varieties are insurable in these counties:

Cattaraugus  
Chautauqua  
Erie  
Niagara  
Ontario  
Schuyler  
Seneca  
Steuben

Suffolk  
Ulster  
Wayne  
Yates



Grapes in other counties may be insured by written agreement from RMA

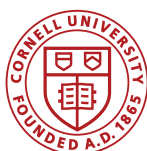
## NYS Grape Crop Insurance Performance



**for every \$1** grape producers spent on crop insurance premiums from 2012 to 2016, **they received \$2.07** in losses paid, on average

## Learn more & sign up:

Explore your personalized crop insurance costs and loss payments under different yield outcomes at [ag-analytics.org](http://ag-analytics.org). To sign up, contact a crop insurance agent. Find an agent using the Agent Locator tool at [rma.usda.gov/tools/agent.html](http://rma.usda.gov/tools/agent.html)



## PLEASE PARTICIPATE IN THE ONLINE NEWA SURVEY

**EDITORS NOTE:** NEWA provides weather and pest model information for a large number of commodities across an ever increasing number of states. It is important for grape growers in New York and Pennsylvania to provide your input into this survey so any improvements to the NEWA website are made with the grape industry in mind. While this is a busy time of year, I encourage you to take the 10 minutes out of your busy day to complete this survey.

The Network for Environment and Weather Applications (NEWA) wants you to take our online survey — it'll only take about 10 minutes of your time.

### Take the survey now:

[https://cornell.qualtrics.com/jfe/form/SV\\_0GRihOIDI5HwbR3](https://cornell.qualtrics.com/jfe/form/SV_0GRihOIDI5HwbR3)

Whether you've used NEWA's online pest forecast models for years or have never used NEWA at all, we will benefit from your responses. Why? Because we are building a new website at [newa.cornell.edu](http://newa.cornell.edu), one that'll be as easy to use on your smart phone as on your desktop, and we want to build it the way you want it to be.

NEWA is an online agricultural decision support system that uses real time weather data, streamed over the internet from 573 weather stations throughout the Northeast, Midwest and mid-Atlantic. NEWA provides insect and plant disease pest management tools, degree days, and weather information for growers, consultants, Extension educators, faculty, and others.

NEWA models and resources are available free of charge, and are used to make informed localized crop management decisions. The NEWA website will be upgraded soon and we want to know what users', new and old, want and need out of the new website.

All responses are anonymous and confidential and will not be shared with any outside group.

Thank you for participating!

### For more information:

Dan Olmstead  
315.787.2207  
[dlo6@cornell.edu](mailto:dlo6@cornell.edu)

NEWA Coordinator, New York State IPM Program  
Cornell University, NYSAES  
630 West North Street  
Geneva, NY 14456

NEWA is a Partnership of the New York State Integrated Pest Management Program and the Northeast Regional Climate Center.



Northeast Regional Climate Center





The Only FRAC Group U6 Fungicide

Labeled for Grapes & Cucurbits

Highly Effective on Powdery Mildew

No Cross-Resistance

Protectant / Preventative Action



FRAC Group 3

Labeled for Grapes

Controls Powdery Mildew & Black Rot

Protectant + Curative Activity

Highly Systemic

# Badge<sup>®</sup> SC

# Badge<sup>®</sup> X<sub>2</sub>



High Quality Copper  
Excellent Mixing Characteristics  
Highly Active at Lower Rates  
Enhanced Crop Safety

# NeXter<sup>®</sup>

Miticide/Insecticide

Mite control on Grapes  
Knockdown and Residual

Dave Pieczarka  
315.447.0560



Torino<sup>®</sup> is a registered trademark of Nippon Soda Company, LTD. EPA Reg No 8033-103-10163. Mettle<sup>®</sup> SC, Badge<sup>®</sup> SC, Badge<sup>®</sup> X<sub>2</sub> are registered trademarks of Isagro USA. Mettle EPA Reg No 80289-8-10163. Badge SC EPA Reg No 80289-3-10163. Badge X<sub>2</sub> EPA Reg No 80289-12-10163. NeXter is a trademark of Nissan Chemical Industries. EPA Reg No 81880-4-10163. Always read and follow label directions.

# Clover Hill Sales<sup>LLC</sup>

10401 Sidehill Road, North East, PA 16428

**814-725-3102**

cloverhill@roadrunner.com

**www.cloverhillsales.com**



Harvester Parts and Belting  
Southern Yellow Pine Posts  
And So Much More!

Rev. 02/17\_BP&Ink

# LANDPRO<sup>®</sup>

EQUIPMENT

Formerly

**Z&M Ag and Turf and Lakeland Equipment**

Alexander • Avon • Brockport • Chili  
Clymer • Edinboro, Pa • Falconer • Hall  
Macedon • Oakfield • Savannah • Springville

**WWW.LANDPROEQUIPMENT.COM**



**Helping farmers to protect their revenue and preserve their equity.**

I will show you how crop insurance is a vital part of your overall risk management plan. Utilizing the policy that works best for your unique situation, you can take less risk and enjoy a better quality of life.

**Mark C. Muir Agency**  
Mark C. Muir

Serving clients in NY, OH, and PA  
10509 Route 6 • Union City, PA 16438-9707  
Phone: (814) 397-0033

DCIS - Toll Free: (866) 669-3429 • Email: info@diversifiedcropinsurance.com | Diversified Crop Insurance Services is a company of CIB Enterprises, Inc. and is an Equal Opportunity Provider. 02/16 00016

# LaPorte

## Farm Equipment

"Large and small, we sell them all"

Sales - Parts - Service  
Westfield NY (716) 326-4671

# CASE IH

AGRICULTURE

[www.laportefarmequipment.com](http://www.laportefarmequipment.com)

### Custom Built 2 Tank Weed Sprayer



We sell and service Case IH tractors, Oxbo Harvesters, and Turbomist sprayers. We also custom manufacture single and dual tank sprayers, pre-pruners, brush sweepers, wire winders.



### WOODS NO TILL VINEYARD DRILL

Available for Rent

Contact Mike @ Larry Romance & Son

716-679-3366

[Tractorsales@netsync.net](mailto:Tractorsales@netsync.net)

## NORTH EAST FRUIT GROWERS, INC.

2297 KLOMP ROAD, NORTH EAST, PA 16428

### SPECIALIZING IN RETAIL:

SPRAY MATERIALS  
FERTILIZER (BAG & BULK)  
VINEYARD & ORCHARD SUPPLIES  
PRUNING SUPPLIES  
PACKAGING FOR FRUIT & VEGETABLES  
SPRAYER PARTS  
TANKS, PUMPS, HOSE  
GLOVES, RAIN GEAR, FOOTWEAR  
SAFETY MATERIALS  
GRAPE POSTS  
WIRE / TIE TWINE  
DRAIN TILE  
SEED & MORE

COME BY OR GIVE US A CALL

(814) 725-3705

### HOURS OF OPERATION:

MONDAY - FRIDAY 8:00AM - 5:00PM  
SATURDAY 8:00AM - NOON



## LERGP Links of Interest:

Go to <http://lergp.cce.cornell.edu/> for a detailed calendar of events, registration, membership, and to view past and current Crop Updates and Newsletters.

LERGP Web-site:

<http://lergp.com/>

Cornell Lake Erie Research & Extension Laboratory Facebook page

<https://www.facebook.com/Cornell-Lake-Erie-Research-and-Extension-Laboratory-678754995584587/?fref=ts>

Efficient Vineyard Web-site:

<https://www.efficientvineyard.com/>

Table for: Insecticides for use in NY and PA:

<http://lergp.cce.cornell.edu/submission.php?id=69&crumb=ipm|ipm>

Crop Estimation and Thinning Table:

[http://nygpadmin.cce.cornell.edu/pdf/submission/pdf65\\_pdf.pdf](http://nygpadmin.cce.cornell.edu/pdf/submission/pdf65_pdf.pdf)

Appellation Cornell Newsletter Index:

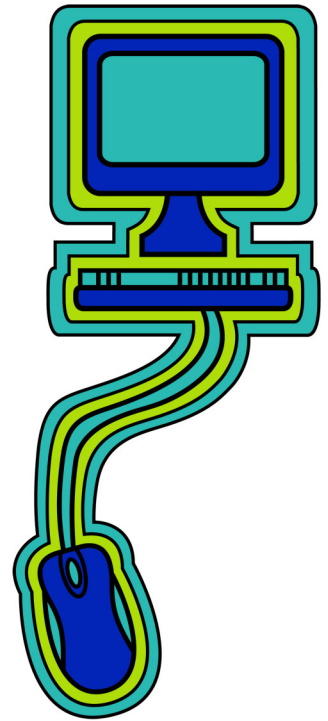
<http://grapesandwine.cals.cornell.edu/cals/grapesandwine/appellation-cornell/>

Veraison to Harvest newsletters:

<http://grapesandwine.cals.cornell.edu/cals/grapesandwine/veraison-to-harvest/index.cfm>

NEWA:

<http://newa.cornell.edu/>





**Lake Erie Regional Grape Program Team Members:**

Andy Muza, (ajm4@psu.edu) Extension Educator, Erie County, PA Extension, 814.825.0900

Tim Weigle, (thw4@cornell.edu) Grape IPM Extension Associate, NYSIPM, 716.792.2800 ext. 203

Kevin Martin, (kmm52@psu.edu) Business Management Educator, 716. 792.2800 ext. 202

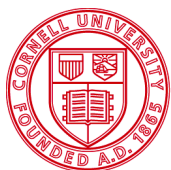
This publication may contain pesticide recommendations. Changes in pesticide regulations occur constantly, and human errors are still possible. Some materials mentioned may not be registered in all states, may no longer be available, and some uses may no longer be legal. Questions concerning the legality and/or registration status for pesticide use should be directed to the appropriate extension agent or state regulatory agency. Read the label before applying any pesticide. Cornell and Penn State Cooperative Extensions, and their employees, assume no liability for the effectiveness or results of any chemicals for pesticide usage. No endorsements of products are made or implied.

Cornell University Cooperative Extension provides equal program and employment opportunities.

Contact the Lake Erie Regional Grape Program if you have any special needs such as visual, hearing or mobility impairments.

CCE does not endorse or recommend any specific product or service.

THE LAKE ERIE REGIONAL GRAPE PROGRAM at CLEREL  
6592 West Main Road  
Portland, NY 14769  
716-792-2800



**Cornell University**  
Cooperative Extension



College of  
Agricultural  
Sciences