



The Lake Erie Regional Grape Program



Crop Update January 19, 2018



Building Strong and Vibrant New York Communities

Diversity and Inclusion are a part of Cornell University's heritage. We are a recognized employer and educator valuing AA/EEO, Protected Veterans, and Individuals with Disabilities.



*Membership Enrollment is underway!
Please contact your respective CCE
office to enroll in LERGP.*

2018 Winter Grower Conference

Wednesday, March 14, 2018

William's Center

SUNY Fredonia Campus

Register On-line!

Use the registration form on page 3 or register on-line using the
following link:

https://lergp.cce.cornell.edu/event_preregistration.php?event=335

Other dates of interest:

Wednesday, January 24- Farm Credit Meeting at CLEREL

Juice Grape Grower session will be held from 9:00 – 11:30 AM

Winery session will be held from 1 – 3:30 PM

Tuesday, February 6, 2018 -Farm Credit Meeting

Cornell Cooperative Extension Building, 4487 Lake Ave. Lockport NY 14094

Juice Garpe Grower Session will be held from 9:00am-11:30AM

Winery Session will be held from 1:00pm-3:30PM

Thursday, February 15- 9:00am- Reporting Session for Projects and Proposals

Location:CLEREL

Wednesday, March 14, 2018- LERGP Winter Grower Conference

William's Center, SUNY Fredonia

LAKE ERIE REGIONAL GRAPE PROGRAM

2018 GRAPE GROWERS' CONFERENCE REGISTRATION FORM

SUNY Fredonia Williams Center

Wednesday, March 14, 2018

Deadline for registration is Friday, March 2, 2018.

Name (1st attendee) _____ \$ _____

Farm Name _____

Address, City, State, Zip Code _____

Phone _____ E-mail _____

Are you enrolled in Lake Erie Regional Grape Program (LERGP)? Yes _____ No _____

REGISTRATION FEES	
LERGP Member 1 st attendee	\$ 50.00
Additional attendee on same farm	\$ 40.00
Non- member	\$100.00

Additional Attendees:

	\$
	\$
	\$
	\$
	\$

*Please add a **\$25.00 late fee** for each reservation made after March 2, 2018

TOTAL \$ _____

Please make check payable to **LERGP (Lake Erie Regional Grape Program)** and mail to: Kate Robinson
(US funds only) LERGP
 6592 W Main Rd
 Portland NY 14769

Name _____ NY DEC/PA PDA NUMBER _____

Name _____ NY DEC/PA PDA NUMBER _____

Name _____ NY DEC/PA PDA NUMBER _____

Date Ck. Rec'd	Amount

Call Kate at 716-792-2800 ext 201 with any questions.

Business Management

Kevin Martin, Penn State University, LERGP, Business Management Educator

Payroll Updates

Concord farm payrolls follow a seasonal pattern, peaking in the 3rd quarter for machine pruned vineyards with a light hand follow-up. Most hand-pruned vineyards see payroll peak in the 1st quarter of the calendar year. 2018 comes with some changes to withholdings.

The IRS has introduced new withholding tables. In many years using outdated withholding tables results in errors so small that nobody would even notice without an audit. These withholding tables have been updated significantly to reflect changes in 2018 tax law. You can find these withholding tables here: <https://www.irs.gov/pub/irs-pdf/n1036.pdf>

Biweekly payroll of \$1,050 to a married person with no allowances required a federal withholding of \$71.70 and will now require a withholding of \$60.60.

NYS introduced paid family leave. While most farms are exempt from paid family leave it is permissible to offer PFL even if your organization is exempt. It is funded through payroll deductions and administered by workers' compensation. Growers already covered by a workers' compensation policy would not see a significant increase in administrative costs. Workers, though would see their wages decrease by .126% or \$1.26 per \$1,000 or a maximum of \$85.56 per week.

Just as a reminder, Federal unemployment rules remain the same. Farms were historically exempt but mega-farms were not. In 1980 a mega-farm was defined as a farm having a payroll in any calendar quarter that exceeds \$20,000. In 2017 \$20,000 is enough to prune 87 acres of grapes. It is 1,870 hours of minimum wage labor in New York State. It is 2,758 hours of minimum wage labor in Pennsylvania, assuming you are able to hire anyone for minimum wage. As labor costs continue to increase, be mindful of the possibility that your farm may lose its status and need to pay unemployment insurance quarterly. Unemployment insurance costs vary based on whether or not your employees use the insurance. It typically costs 3%-4% of gross payroll but can vary significantly.

Growers need to keep records that show piece rate workers are earning more than minimum wage in all hours worked. In PA minimum wage remains at the federal rate of \$7.25. Minimum wage in NY is more complicated but our grape growers are subject to a minimum wage of \$10.40.

NY Wine & Grape Foundation Wants Your Input On New Strategic Plan

The New York Wine & Grape Foundation is collaborating with Farm Credit East consultants Nathan Rudgers and Gregg McConnell to complete a comprehensive strategic planning process for the organization. From these efforts, the Foundation hopes to learn more about critical issues facing the wine and grape community across WNY, discover new and innovative ways to assist in dealing with them, and broaden outreach to the community and its supporters.

“The Wine & Grape Foundation is excited to partner with Farm Credit East because of their extensive background and credibility working with New York farmers, particularly the region’s wine and grape growers,” said Sam Filler, New York Wine & Grape Foundation. “The results of this effort will position us to best serve New York State’s growing wine and grape industry.”

The Farm Credit East consultant team tasked with this project will carry out 11 producer meetings across the state’s different grape growing regions to understand the strengths, weaknesses, opportunities and threats that New York’s wine and grape producers feel are facing their industry.

Meetings in the Chautauqua Lake Erie Region will be held on January 24 in the CLEREL meeting room, 6592 West Main Road, Portland, NY 14769.

Juice Grape Grower session will be held from 9:00 – 11:30 AM

Winery session will be held from 1 – 3:30 PM.

Meetings in the Niagara Lake Erie Region will be held on February 6, 2018 at the Cornell Cooperative Extension Building, 4487 Lake Ave. Lockport NY 14094

Juice Grape Grower Session will be held from 9:00am-11:30AM

Winery Session will be held from 1:00pm-3:30PM

Editor’s note: This is an excellent opportunity to come and provide input on what you feel the needs of the juice grape and wine industries in the Lake Erie region are. Do not pass up the chance to have your voice heard during this critical juncture of our industry.

From the information garnered at these sessions, the Farm Credit East consultants will identify key elements to help refresh the mission and vision statements for the New York Wine & Grape Foundation going forward. The vision will position the Foundation to respond to the current research, policy and promotional needs of the wine, juice and grape industry. The consultants will also work with the New York Wine & Grape Foundation to develop goals and objectives that bring the vision to life.

“For more than 30 years, the New York Wine & Grape Foundation has done an effective job of promoting the interests of grape growers and wine production to drive growth in the state’s farm winery industry,” said Nathan Rudgers, Farm Credit East director of business development. “With new leadership in place, the board has wisely chosen to renew the Foundation’s commitment to the state’s grape growing and wine producing industry by engaging in this strategic planning effort.”

Your Opinion is Important!

How many times have you heard that prior to someone asking you to participate in a survey? Well, I do not want to disappoint by not following up and offering you the chance to provide your input on the Network for Environment and Weather Applications (NEWA).

I know that surveys have become the bane of many people's existence but I will tell you that they are very important when it comes to writing grants and planning educational activities. A lot of the programming put on by the Lake Erie Regional Grape Program and the NYS IPM Program is possible due to funding through grants from external sources like the Lake Erie Processor group (National Grape, Constellation Brands and Walker's Fruit Basket) as well as, state and federal sources. These groups typically fund projects that address priorities developed by growers and members of the industry. That is why your input is so valuable. Please take a few minutes to fill out the 5-question survey found at the following link.

[NEWA Survey 2018](#)

I thank you in advance for your participation in the survey.

If you have any questions, please contact Tim Weigle at thw4@cornell.edu

PA Update

Andy Muza, Extension Educator, Penn State

“Good Bugs vs Bad: Using Biological Controls in Spotted Wing Drosophila Management,”

Spotted Wing Drosophila (SWD) is an invasive pest that has challenged producers of berries and cherries across the United States and around the world in recent years. A team of researchers from across the United States has been collaborating to improve management of spotted wing Drosophila. A key component of the project is to learn the role of biological control in controlling spotted wing Drosophila and to discover new biocontrol agents.

“Good Bugs vs Bad: Using Biological Controls in SWD Management,” is a **free webinar that will be offered on February 23, 2018 from 12 – 1 PM**. This webinar will include an overview of the project, an update on the native biocontrol agents that have been found in surveys at farms from Oregon to Maine, and the latest information on their search for parasitic wasps from Asia.

This webinar is free and open to all thanks to funding from the USDA Specialty Crop Research Initiative.

Register with your name and email address by selecting the “CTRL” key and clicking on:

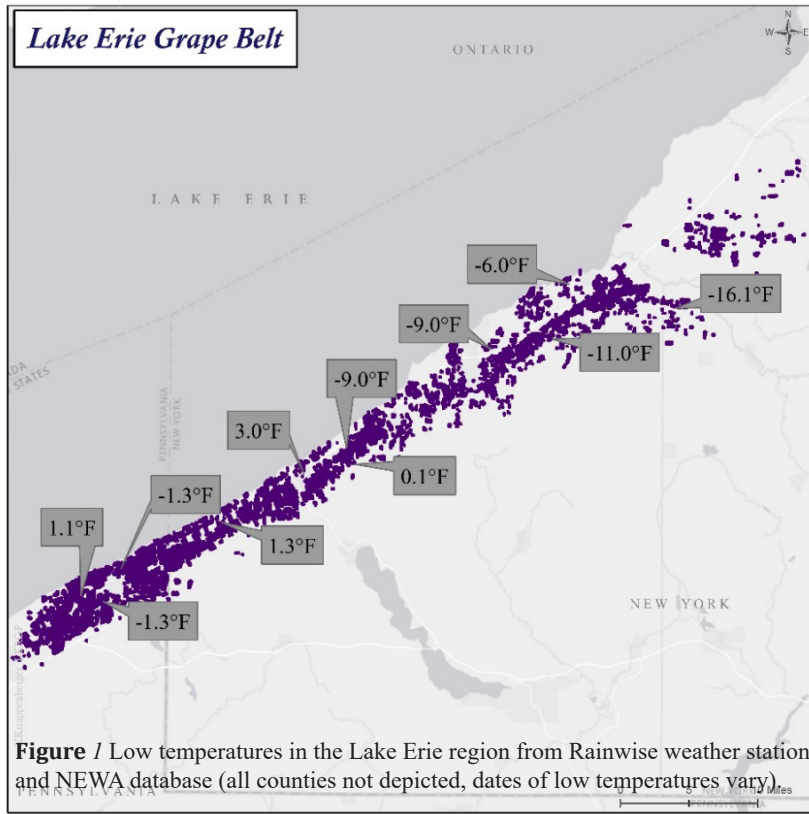
Good Bugs vs Bad: Using Biological Controls in SWD Management.

Viticulture

Jacqueline Dresser, LERGP Viticulture Extension Support Specialist

Erratic winter weather and your vineyard

It is very strange to find yourself shedding layers one morning and bundling up in the afternoon. But this was the case on Friday, where temperatures dropped by as much as 40°F in the space of hours. This was followed, on Sunday, by the coldest temperatures recorded yet this winter at most of the weather stations in the Lake Erie region. Although the incidence of low temperatures varies spatially, according to weather station data, with lows ranging from -16.1°F in Versailles to 3.0°F in Westfield (Figure 1). The coldest temperature recorded this winter, regionally, was -16.1°F on Sunday morning at the Versailles weather station.



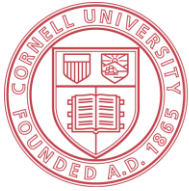
The [NEWA](#) website has an archive of daily weather summaries from an extensive network of weather stations across the country. LERGP also downloads temperature and other weather data recorded at fifteen minute intervals directly from ten NEWA weather stations from Ransomville to Harborcreek. This data will be available on the [LERGP](#) site graphically, painting a clearer picture of how low temperatures have presented themselves over time. As NEWA continues to expand and add useful tools to their site, these types of representations may appear on the site in the future.

The data we have available suggests that recent weather does not pose an extreme threat to cold hardy native and hybrid varieties. The xylem and phloem tissues in canes and trunks are still dehydrated and protected from freezing, and the bud hardiness analysis of samples taken at the CLEREL lab show that buds were hardy

enough to withstand the coldest temperatures experienced in Portland with less than 10% bud mortality (Table 1). However, considering the spatial variation in temperature in the region, it is likely that hardiness varies spatially as well. CLEREL has tracked warmer through the winter than other areas, so the hardiness information from samples taken at the lab will only provide a general indication of hardiness regionally, which is affected by genetic, environmental, and management factors. Riesling, and perhaps other vinifera plantings may have seen more severe bud injury depending on their location in the region (Figure 1). If temperatures were low enough in your area to cause worry about bud injury, testing bud samples in your vineyard is the only way to know for sure how your vineyard fared. Some videos on this process from the Finger Lakes Grape Program can be found [here](#) and [here](#). Information on how to assess winter injury of trunks and canes can be found [here](#).

Table 1. Bud hardiness data from samples taken on January 10, 2018 from CLEREL

Variety	LT10 (°F)	LT50 (°F)	LT90 (°F)
Niagara	-10.8	-14.5	-19.8
Concord (Barn Block)	-14.1	-20.6	-27.2
Seyval	-7.4	-13.9	-21.4
Concord (RR Block)	-10.7	-19.4	-24.6
Riesling	-2.9	-7.6	-13.8



Cornell University
Cooperative Extension

Cornell and Penn State Cooperative Extension

Lake Erie Regional Grape Program

6592 West Main Rd, Portland, NY 14769
662 N. Cemetery Road, North East, PA 16428-2902
850 East Gore Road, Erie, PA 16509-3798

716-792-2800
814-725-4601
814-825-0900

“CORE” Pesticide Training and Pesticide Applicators License Exam
March 28, 2018
Cornell Lake Erie Research and Extension Laboratory (CLEREL)
6592 West Main Road
Portland, NY 14769

Space is limited ---Pre-registration is required for both sessions

CORE TRAINING

WHEN: Wednesday, March 28, 2018 from 9 AM to 12:15 PM

WHERE: CLEREL Meeting room

COST: \$15

3.0 Pesticide recertification credits in the CORE category have been applied for.

The CORE training session is also designed as a review prior to taking the Commercial or Private Pesticide Applicator exam but is not required prior to taking the exam.

Preregistration for the training using the enclosed course registration form is required by **March 26, 2017.**

Or sign up on-line at <https://lergp.cce.cornell.edu>

Questions on the training session should be directed to Kate at (716) 792-2800 ext 201

PRIVATE AND COMMERCIAL NYS PESTICIDE EXAMINATIONS

WHEN: 1 PM

WHERE: CLEREL Meeting room

COST: \$100

REGISTRATION: NYS Department of Environmental Conservation (DEC) requires you to register for entrance to the exam session with the Buffalo DEC office at (716) 851-7220.

DEADLINE for registration to take the test is March 9, 2018. To register, call the DEC at (716) 851-7220. You will then be sent an exam application form and test instructions by the DEC.

Any questions about your eligibility to take an exam or the status of your current certification should be directed to the Buffalo DEC office at (716) 851-7220.

Commercial Applicators: You will need the “Core Manual” and the category manual for the area(s) in which you will be certifying.

Private Applicators: You will need to get the “Core Manual” plus the private category manual for the area in which you will be certifying.

CORE and category training manuals are available through the Cornell Store by calling (800) 624-4080 or the [web-site link: http://store.cornell.edu/c-876-manuals.aspx](http://store.cornell.edu/c-876-manuals.aspx)

Questions on Pesticide Examinations should be directed to the NYS DEC at (716) 851-7220.

**2018 CORE PESTICIDE TRAINING
REGISTRATION FORM
Wednesday March 28, 2018**

Space is limited – pre-registration is required.

To register for the training, fill out and return registration form to:

ATTN: Kate
Lake Erie Regional Grape Program
CLEREL
6592 West Main Road
Portland, NY 14769

Name(s) _____

Address _____

Phone _____

Number attending _____

Registration and payment by Monday, March 26, 2018 (\$15 per person)

Make Checks Payable to: Lake Erie Regional Grape Program

IMPORTANT: This registration is for the CORE training session only.

If you wish to take the exam for a NYS DEC Pesticide Applicator's License you must contact the Buffalo office of the NYS DEC by calling Mike Nierenberg or Shaun Conrad at (716) 851-7220 no later than March 9, 2018 to provide ample time for them to provide you with an exam application form and test instructions.



INSURING GRAPES

NY, 2017

Crop insurance is a safety net for farmers that helps you **manage risk**. If you have a crop failure, crop insurance can help you farm again next year.

Important Insurance Deadlines

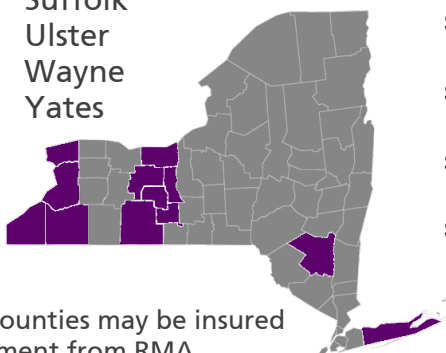
- **Aug. 15, 2017:** Premium Billing Date
- **Nov. 20, 2017:** Sales Closing, Policy Change, Cancellation, Termination Date
- **Nov. 20, 2017:** End of Insurance Period
- **Jan. 15, 2018:** Acreage / Production Report Date



Over 40 grape varieties are insurable in these counties:

Cattaraugus
Chautauqua
Erie
Niagara
Ontario
Schuyler
Seneca
Steuben

Suffolk
Ulster
Wayne
Yates



Grapes in other counties may be insured by written agreement from RMA

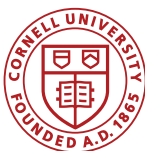
NYS Grape Crop Insurance Performance



for every \$1 grape producers spent on crop insurance premiums from 2012 to 2016, **they received \$2.07** in losses paid, on average

Learn more & sign up:

Explore your personalized crop insurance costs and loss payments under different yield outcomes at ag-analytics.org. To sign up, contact a crop insurance agent. Find an agent using the Agent Locator tool at rma.usda.gov/tools/agent.html



PLEASE PARTICIPATE IN THE ONLINE NEWA SURVEY

EDITORS NOTE: NEWA provides weather and pest model information for a large number of commodities across an ever increasing number of states. It is important for grape growers in New York and Pennsylvania to provide your input into this survey so any improvements to the NEWA website are made with the grape industry in mind. While this is a busy time of year, I encourage you to take the 10 minutes out of your busy day to complete this survey.

The Network for Environment and Weather Applications (NEWA) wants you to take our online survey — it'll only take about 10 minutes of your time.

Take the survey now:

https://cornell.qualtrics.com/jfe/form/SV_0GRihOIDI5HwbR3

Whether you've used NEWA's online pest forecast models for years or have never used NEWA at all, we will benefit from your responses. Why? Because we are building a new website at newa.cornell.edu, one that'll be as easy to use on your smart phone as on your desktop, and we want to build it the way you want it to be.

NEWA is an online agricultural decision support system that uses real time weather data, streamed over the internet from 573 weather stations throughout the Northeast, Midwest and mid-Atlantic. NEWA provides insect and plant disease pest management tools, degree days, and weather information for growers, consultants, Extension educators, faculty, and others.

NEWA models and resources are available free of charge, and are used to make informed localized crop management decisions. The NEWA website will be upgraded soon and we want to know what users', new and old, want and need out of the new website.

All responses are anonymous and confidential and will not be shared with any outside group.

Thank you for participating!

For more information:

Dan Olmstead
315.787.2207
dlo6@cornell.edu

NEWA Coordinator, New York State IPM Program
Cornell University, NYSAES
630 West North Street
Geneva, NY 14456

NEWA is a Partnership of the New York State Integrated Pest Management Program and the Northeast Regional Climate Center.



Northeast Regional Climate Center



The Only FRAC Group U6 Fungicide

Labeled for Grapes & Cucurbits

Highly Effective on Powdery Mildew

No Cross-Resistance

Protectant / Preventative Action



FRAC Group 3

Labeled for Grapes

Controls Powdery Mildew & Black Rot

Protectant + Curative Activity

Highly Systemic

Badge® SC

Badge® X₂



High Quality Copper
Excellent Mixing Characteristics
Highly Active at Lower Rates
Enhanced Crop Safety

NeXter®

Miticide/Insecticide

Mite control on Grapes
Knockdown and Residual

Dave Pieczarka
315.447.0560



Torino® is a registered trademark of Nippon Soda Company, LTD. EPA Reg No 8033-103-10163. Mettle® is a registered trademark of Isagro USA. Mettle EPA Reg No 80289-8-10163. Badge SC EPA Reg No 80289-3-10163. Badge X2 EPA Reg No 80289-12-10163. Nexter is a trademark of Nissan Chemical Industries. EPA Reg No 81880-4-10163. Always read and follow label directions.

Clover Hill Sales LLC

10401 Sidehill Road, North East, PA 16428

814-725-3102

cloverhill@roadrunner.com

www.cloverhillsales.com



Harvester Parts and Belting
Southern Yellow Pine Posts
And So Much More!

Rev. 02/17_BP&Ink

LANDPRO

EQUIPMENT

Formerly

Z&M Ag and Turf and Lakeland Equipment

Alexander • Avon • Brockport • Chili
Clymer • Edinboro, Pa • Falconer • Hall
Macedon • Oakfield • Savannah • Springville

WWW.LANDPROEQUIPMENT.COM



Helping farmers to protect their revenue and preserve their equity.

I will show you how crop insurance is a vital part of your overall risk management plan. Utilizing the policy that works best for your unique situation, you can take less risk and enjoy a better quality of life.

Mark C. Muir Agency
Mark C. Muir

Serving clients in NY, OH, and PA
10509 Route 6 • Union City, PA 16438-9707
Phone: (814) 397-0033

DCIS - Toll Free: (866) 669-3429 • Email: info@diversifiedcropinsurance.com | Diversified Crop Insurance Services is a company of CCB Enterprises, Inc. and is an Equal Opportunity Provider. 02/16 00016

LaPorte

Farm Equipment

"Large and small, we sell them all"

Sales - Parts - Service
Westfield NY (716) 326-4671

CASE IH

AGRICULTURE

www.laportefarmequipment.com

Custom Built 2 Tank Weed Sprayer



We sell and service Case IH tractors, Oxbo Harvesters, and Turbomist sprayers. We also custom manufacture single and dual tank sprayers, pre-pruners, brush sweepers, wire winders.



WOODS NO TILL VINEYARD DRILL

Available for Rent

Contact Mike @ Larry Romance & Son

716-679-3366

Tractorsales@netsync.net

NORTH EAST FRUIT GROWERS, INC.

2297 KLOMP ROAD, NORTH EAST, PA 16428

SPECIALIZING IN RETAIL:

SPRAY MATERIALS
FERTILIZER (BAG & BULK)
VINEYARD & ORCHARD SUPPLIES
PRUNING SUPPLIES
PACKAGING FOR FRUIT & VEGETABLES
SPRAYER PARTS
TANKS, PUMPS, HOSE
GLOVES, RAIN GEAR, FOOTWEAR
SAFETY MATERIALS
GRAPE POSTS
WIRE / TIE TWINE
DRAIN TILE
SEED & MORE

COME BY OR GIVE US A CALL

(814) 725-3705

HOURS OF OPERATION:

MONDAY - FRIDAY 8:00AM - 5:00PM
SATURDAY 8:00AM - NOON



LERGP Links of Interest:

Go to <http://lergp.cce.cornell.edu/> for a detailed calendar of events, registration, membership, and to view past and current Crop Updates and Newsletters.

LERGP Web-site:

<http://lergp.com/>

Cornell Lake Erie Research & Extension Laboratory Facebook page

<https://www.facebook.com/Cornell-Lake-Erie-Research-and-Extension-Laboratory-678754995584587/?fref=ts>

Efficient Vineyard Web-site:

<https://www.efficientvineyard.com/>

Table for: Insecticides for use in NY and PA:

<http://lergp.cce.cornell.edu/submission.php?id=69&crumb=ipm|ipm>

Crop Estimation and Thinning Table:

http://nygpadmin.cce.cornell.edu/pdf/submission/pdf65_pdf.pdf

Appellation Cornell Newsletter Index:

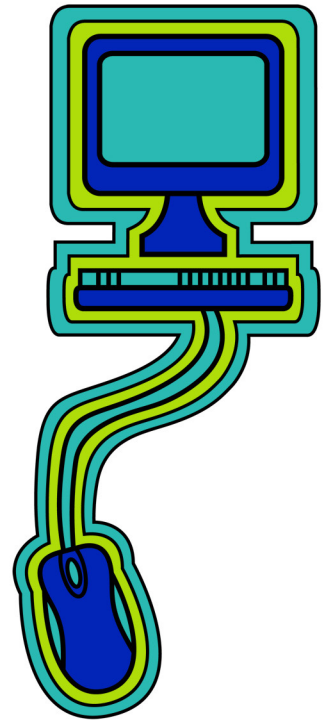
<http://grapesandwine.cals.cornell.edu/cals/grapesandwine/appellation-cornell/>

Veraison to Harvest newsletters:

<http://grapesandwine.cals.cornell.edu/cals/grapesandwine/veraison-to-harvest/index.cfm>

NEWA:

<http://newa.cornell.edu/>





Lake Erie Regional Grape Program Team Members:

Andy Muza, (ajm4@psu.edu) Extension Educator, Erie County, PA Extension, 814.825.0900

Tim Weigle, (thw4@cornell.edu) Grape IPM Extension Associate, NYSIPM, 716.792.2800 ext. 203

Kevin Martin, (kmm52@psu.edu) Business Management Educator, 716. 792.2800 ext. 202

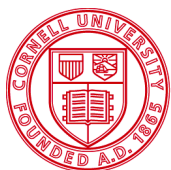
This publication may contain pesticide recommendations. Changes in pesticide regulations occur constantly, and human errors are still possible. Some materials mentioned may not be registered in all states, may no longer be available, and some uses may no longer be legal. Questions concerning the legality and/or registration status for pesticide use should be directed to the appropriate extension agent or state regulatory agency. Read the label before applying any pesticide. Cornell and Penn State Cooperative Extensions, and their employees, assume no liability for the effectiveness or results of any chemicals for pesticide usage. No endorsements of products are made or implied.

Cornell University Cooperative Extension provides equal program and employment opportunities.

Contact the Lake Erie Regional Grape Program if you have any special needs such as visual, hearing or mobility impairments.

CCE does not endorse or recommend any specific product or service.

THE LAKE ERIE REGIONAL GRAPE PROGRAM at CLEREL
6592 West Main Road
Portland, NY 14769
716-792-2800



Cornell University
Cooperative Extension



College of
Agricultural
Sciences