



The Lake Erie Regional Grape Program



Happy Harvest

Crop Update September 14, 2017



Building Strong and Vibrant New York Communities

Diversity and Inclusion are a part of Cornell University's heritage. We are a recognized employer and educator valuing AA/EEO, Protected Veterans, and Individuals with Disabilities.

Hops Harvest



PA Update

Andy Muza, Extension Educator, Penn State

BLACKLEAF

A black coloration on exposed (outside) leaves of Concord canopies is evident throughout the region (Figure 1). This leaf condition is known as Blackleaf.

Almost every season, some level of black leaf starts to become evident around late August or early September. This season symptoms are more prevalent.

Potassium deficiency was considered to be the cause of black leaf. However, research conducted at Washington State University has shown that lack of potassium is now not the cause. This research indicated that a combination of high levels of solar radiation (specifically ultraviolet-B radiation) and water stress induces black leaf.

Over an extended period with high levels of sunlight, the upper layer of leaf cells (epidermis) of exposed leaves are damaged by high UVB levels. Lack of water during these environmental conditions also causes a reduction in leaf transpiration resulting in higher leaf temperatures. High leaf temperatures can result in additional leaf tissue damage.

So, a hot, dry, sunny July and August in the region is my explanation for why black leaf is more prevalent in 2017 in Concord vineyards in our region.



Figure 1. Concord leaves with blackleaf. Photo: Andy Muza, Penn State.

Check out these publications for blackleaf information:

Blackleaf in Grapes <http://extension.wsu.edu/publications/wp-content/uploads/sites/54/publications/eb0745.pdf>

Blackleaf in Grapes (eXtension) <http://articles.extension.org/pages/31678/blackleaf-in-grapes>



Figure 2. Concord leaf with severe potassium deficiency. Photo: Andy Muza, Penn State.

Potassium deficiencies are also evident in some Concord vineyards (Figure 2). This is not unexpected due to the dry conditions in July and August and high crop loads in some blocks. However, be sure to determine if your vineyard is low in potassium by conducting soil and petiole sampling.

North East PA Update

Bryan Hed, Research Technologist, Lake Erie Grape Research and Extension Center

Weather: At our location by the lake, we have recorded 2.62" of precipitation so far in September (including the rain we just got this morning). We have now accumulated 2379 gdds since April 1. Rain is in the forecast for today, but drier weather will follow throughout the weekend along with above average high temperatures over the next several days.

Diseases: After a week of dry weather, rainfall this morning has generated another downy mildew infection period at some locations in the Lake Erie belt (according to DMCAst on NEWA). Take the time to scout blocks of susceptible varieties; this disease is relatively easy to spot and if left uncontrolled, can do a tremendous amount of damage, especially to the more susceptible wine varieties. I'm not saying that you should just go out and spray. I am saying that you should know if you have a problem developing. The downy mildew lesions I've seen were on new shoot growth and not on older/mature leaves. This is because new leaves are more susceptible and because they are more likely to be unprotected by prior fungicide sprays. Older, exporting leaves may still be coated with at least some fungicide residue despite the recent rain, and if the disease is confined to a few lesions on new leaves it will be of much less consequence at this point in the season. The key here is to not let it get out of control and defoliate your vines; the downy mildew pathogen is most likely to get out of control under warm, wet, cloudy conditions.



INSURING GRAPES

NY, 2017

Crop insurance is a safety net for farmers that helps you **manage risk**. If you have a crop failure, crop insurance can help you farm again next year.

Important Insurance Deadlines

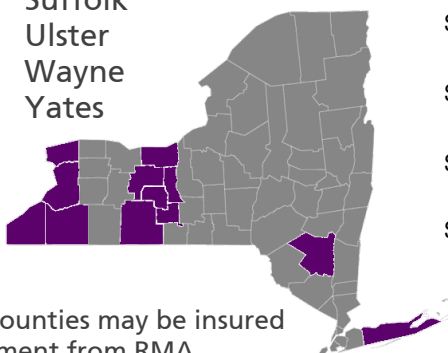
- **Aug. 15, 2017:** Premium Billing Date
- **Nov. 20, 2017:** Sales Closing, Policy Change, Cancellation, Termination Date
- **Nov. 20, 2017:** End of Insurance Period
- **Jan. 15, 2018:** Acreage / Production Report Date



Over 40 grape varieties are insurable in these counties:

Cattaraugus
Chautauqua
Erie
Niagara
Ontario
Schuyler
Seneca
Steuben

Suffolk
Ulster
Wayne
Yates



Grapes in other counties may be insured by written agreement from RMA

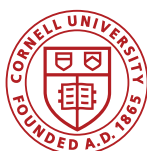
NYS Grape Crop Insurance Performance



for every \$1 grape producers spent on crop insurance premiums from 2012 to 2016, **they received \$2.07** in losses paid, on average

Learn more & sign up:

Explore your personalized crop insurance costs and loss payments under different yield outcomes at ag-analytics.org. To sign up, contact a crop insurance agent. Find an agent using the Agent Locator tool at rma.usda.gov/tools/agent.html



PLEASE PARTICIPATE IN THE ONLINE NEWA SURVEY

EDITORS NOTE: NEWA provides weather and pest model information for a large number of commodities across an ever increasing number of states. It is important for grape growers in New York and Pennsylvania to provide your input into this survey so any improvements to the NEWA website are made with the grape industry in mind. While this is a busy time of year, I encourage you to take the 10 minutes out of your busy day to complete this survey.

The Network for Environment and Weather Applications (NEWA) wants you to take our online survey — it'll only take about 10 minutes of your time.

Take the survey now:

https://cornell.qualtrics.com/jfe/form/SV_0GRihOIDI5HwbR3

Whether you've used NEWA's online pest forecast models for years or have never used NEWA at all, we will benefit from your responses. Why? Because we are building a new website at newa.cornell.edu, one that'll be as easy to use on your smart phone as on your desktop, and we want to build it the way you want it to be.

NEWA is an online agricultural decision support system that uses real time weather data, streamed over the internet from 573 weather stations throughout the Northeast, Midwest and mid-Atlantic. NEWA provides insect and plant disease pest management tools, degree days, and weather information for growers, consultants, Extension educators, faculty, and others.

NEWA models and resources are available free of charge, and are used to make informed localized crop management decisions. The NEWA website will be upgraded soon and we want to know what users', new and old, want and need out of the new website.

All responses are anonymous and confidential and will not be shared with any outside group.

Thank you for participating!

For more information:

Dan Olmstead
315.787.2207
dlo6@cornell.edu

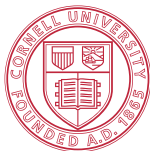
NEWA Coordinator, New York State IPM Program
Cornell University, NYSAES
630 West North Street
Geneva, NY 14456

NEWA is a Partnership of the New York State Integrated Pest Management Program and the Northeast Regional Climate Center.



Northeast Regional Climate Center

Employment Opportunity:



Cornell University New York State Integrated Pest Management Program

Timothy Weigle

Senior Extension Associate

Grape and Hop IPM Specialist

Lake Erie Regional Grape Program CLEREL

6592 West Main Road

Portland, NY 14769

Phone: 716-792-2800

Fax: 716-792-2805

E-mail: thw4@cornell.edu

www.nysipm.cornell.edu

NEWA Service Technician Position Available

A 19 hour per week position is currently available with the NYS IPM Program and Lake Erie Regional Grape Program and will be housed at the Cornell Lake Erie Research and Extension Laboratory in Portland, NY. This position will provide program support to ensure the reliability of data produced by the weather data loggers associated with NEWA. (Network for Environment and Weather Applications <http://newa.cornell.edu>) that will ultimately enhance the profitability and sustainability of the grape industry served by the LERGP.

Position responsibilities include, but are not limited to;

- Responsible for monitoring NEWA stations in the Lake Erie region.
- Assist project team members to ensure NEWA station malfunctions are identified and corrected through phone conversations and on-site maintenance visits.
- Assist project team members in increasing adoption of weather and pest model information found on NEWA through scouting vineyards of participating growers.
- Responsible for the completion of accurate reports and working with the Grape IPM specialist in submission of reports to funding partners.

Qualifications

Experience working as part of a project team. Must possess sound judgment, excellent reasoning and decision-making skills, meticulous record keeping and ability to work with diverse personalities. Must be able to work under pressure with a great deal of initiative. Must have excellent organizational skills with the ability to prioritize multiple projects. Ability to work well with others is required while creating a high-quality and respectful work environment. Must be able to work independently while supporting the efforts of an overall team. Ability to communicate with tact and diplomacy with a wide range of internal and external constituencies is a must. Excellent writing and verbal communications skills. Proficiency in the use of computer hardware and software used in communication. Demonstrated ability to work independently; yet be an effective contributor to team efforts. Will be a self-starter with the ability to troubleshoot, and suggest solutions to problems. Must be able to meet the travel requirements of the position, including having reliable transportation and having and maintaining a valid driver's license. Must exercise sound and ethical judgment when acting on behalf of the University.

Preferred Qualifications

Experience in troubleshooting and maintaining electronic equipment and digital communication devices is preferred.

Please contact Tim Weigle, NYS IPM Program, Cornell University at thw4@cornell.edu for more information.





The Only FRAC Group U6 Fungicide

Labeled for Grapes & Cucurbits

Highly Effective on Powdery Mildew

No Cross-Resistance

Protectant / Preventative Action



FRAC Group 3

Labeled for Grapes

Controls Powdery Mildew & Black Rot

Protectant + Curative Activity

Highly Systemic

Badge[®] SC

Badge[®] X₂



High Quality Copper
Excellent Mixing Characteristics
Highly Active at Lower Rates
Enhanced Crop Safety

NeXter[®]

Miticide/Insecticide

Mite control on Grapes
Knockdown and Residual

Dave Pieczarka
315.447.0560



Torino[®] is a registered trademark of Nippon Soda Company, LTD. EPA Reg No 8033-103-10163. Mettle[®] SC, Badge[®] SC, Badge[®] X₂ are registered trademarks of Isagro USA. Mettle EPA Reg No 80289-8-10163. Badge SC EPA Reg No 80289-3-10163. Badge X₂ EPA Reg No 80289-12-10163. NeXter is a trademark of Nissan Chemical Industries. EPA Reg No 81880-4-10163. Always read and follow label directions.

Clover Hill Sales^{LLC}

10401 Sidehill Road, North East, PA 16428

814-725-3102

cloverhill@roadrunner.com

www.cloverhillsales.com



Harvester Parts and Belting
Southern Yellow Pine Posts
And So Much More!

Rev. 02/17_BP&Ink

LANDPRO[®]

EQUIPMENT

Formerly

Z&M Ag and Turf and Lakeland Equipment

Alexander • Avon • Brockport • Chili
Clymer • Edinboro, Pa • Falconer • Hall
Macedon • Oakfield • Savannah • Springville

WWW.LANDPROEQUIPMENT.COM



Helping farmers to protect their revenue and preserve their equity.

I will show you how crop insurance is a vital part of your overall risk management plan. Utilizing the policy that works best for your unique situation, you can take less risk and enjoy a better quality of life.

Mark C. Muir Agency
Mark C. Muir

Serving clients in NY, OH, and PA
10509 Route 6 • Union City, PA 16438-9707
Phone: (814) 397-0033

DCIS - Toll Free: (866) 669-3429 • Email: info@diversifiedcropinsurance.com | Diversified Crop Insurance Services is a company of CIB Enterprises, Inc. and is an Equal Opportunity Provider. 02/16 00016

LaPorte

Farm Equipment

"Large and small, we sell them all"

Sales - Parts - Service
Westfield NY (716) 326-4671

CASE IH

AGRICULTURE

www.laportefarmequipment.com

Custom Built 2 Tank Weed Sprayer



We sell and service Case IH tractors, Oxbo Harvesters, and Turbomist sprayers. We also custom manufacture single and dual tank sprayers, pre-pruners, brush sweepers, wire winders.



WOODS NO TILL VINEYARD DRILL

Available for Rent

Contact Mike @ Larry Romance & Son

716-679-3366

Tractorsales@netsync.net

NORTH EAST FRUIT GROWERS, INC.

2297 KLOMP ROAD, NORTH EAST, PA 16428

SPECIALIZING IN RETAIL:

SPRAY MATERIALS
FERTILIZER (BAG & BULK)
VINEYARD & ORCHARD SUPPLIES
PRUNING SUPPLIES
PACKAGING FOR FRUIT & VEGETABLES
SPRAYER PARTS
TANKS, PUMPS, HOSE
GLOVES, RAIN GEAR, FOOTWEAR
SAFETY MATERIALS
GRAPE POSTS
WIRE / TIE TWINE
DRAIN TILE
SEED & MORE

COME BY OR GIVE US A CALL

(814) 725-3705

HOURS OF OPERATION:

MONDAY - FRIDAY 8:00AM - 5:00PM
SATURDAY 8:00AM - NOON



LERGP Links of Interest:

Go to <http://lergp.cce.cornell.edu/> for a detailed calendar of events, registration, membership, and to view past and current Crop Updates and Newsletters.

LERGP Web-site:

<http://lergp.com/>

Cornell Lake Erie Research & Extension Laboratory Facebook page

<https://www.facebook.com/Cornell-Lake-Erie-Research-and-Extension-Laboratory-678754995584587/?fref=ts>

Efficient Vineyard Web-site:

<https://www.efficientvineyard.com/>

Table for: Insecticides for use in NY and PA:

<http://lergp.cce.cornell.edu/submission.php?id=69&crumb=ipm|ipm>

Crop Estimation and Thinning Table:

http://nygpadmin.cce.cornell.edu/pdf/submission/pdf65_pdf.pdf

Appellation Cornell Newsletter Index:

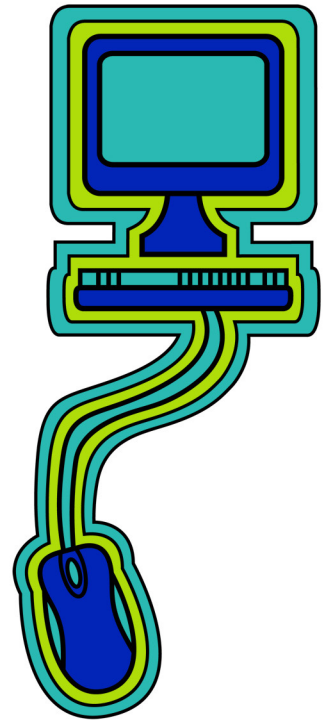
<http://grapesandwine.cals.cornell.edu/cals/grapesandwine/appellation-cornell/>

Veraison to Harvest newsletters:

<http://grapesandwine.cals.cornell.edu/cals/grapesandwine/veraison-to-harvest/index.cfm>

NEWA:

<http://newa.cornell.edu/>





Lake Erie Regional Grape Program Team Members:

Andy Muza, (ajm4@psu.edu) Extension Educator, Erie County, PA Extension, 814.825.0900

Tim Weigle, (thw4@cornell.edu) Grape IPM Extension Associate, NYSIPM, 716.792.2800 ext. 203

Kevin Martin, (kmm52@psu.edu) Business Management Educator, 716. 792.2800 ext. 202

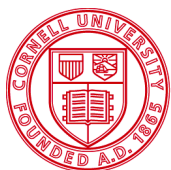
This publication may contain pesticide recommendations. Changes in pesticide regulations occur constantly, and human errors are still possible. Some materials mentioned may not be registered in all states, may no longer be available, and some uses may no longer be legal. Questions concerning the legality and/or registration status for pesticide use should be directed to the appropriate extension agent or state regulatory agency. Read the label before applying any pesticide. Cornell and Penn State Cooperative Extensions, and their employees, assume no liability for the effectiveness or results of any chemicals for pesticide usage. No endorsements of products are made or implied.

Cornell University Cooperative Extension provides equal program and employment opportunities.

Contact the Lake Erie Regional Grape Program if you have any special needs such as visual, hearing or mobility impairments.

CCE does not endorse or recommend any specific product or service.

THE LAKE ERIE REGIONAL GRAPE PROGRAM at CLEREL
6592 West Main Road
Portland, NY 14769
716-792-2800



Cornell University
Cooperative Extension



College of
Agricultural
Sciences