



The Lake Erie Regional Grape Program



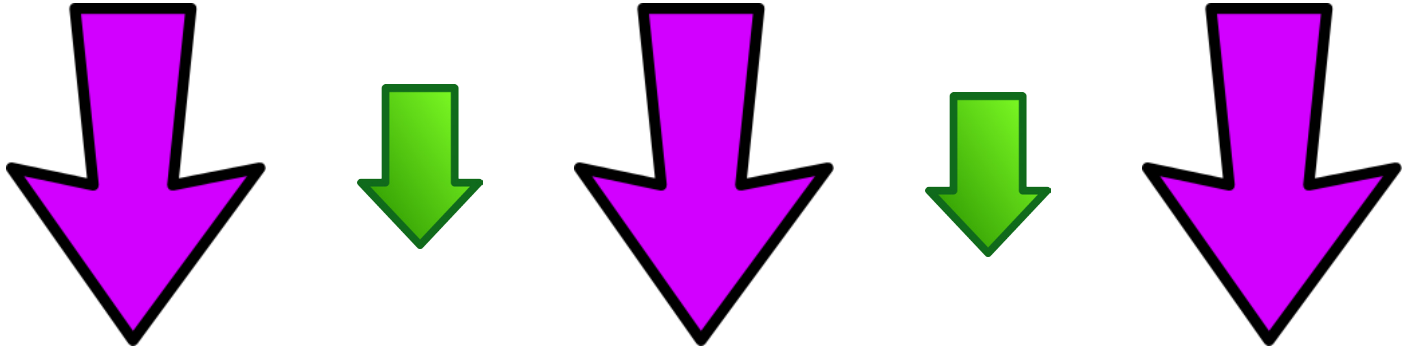
Crop Update September 7, 2017

Happy Harvest

Building Strong and Vibrant New York Communities

Diversity and Inclusion are a part of Cornell University's heritage. We are a recognized employer and educator valuing AA/EEO, Protected Veterans, and Individuals with Disabilities.

Important- Please read-



Last Call for Participation in the NY Wine & Grape Research Order – Deadline Friday September 8!

By now, everyone should have gotten their ballot from NYS Ag & Markets to allow them to vote in the Grape Research Order process. This is just a reminder that your ballot is due this Friday, September 18. No matter how you vote, this is your opportunity to have your voice heard. If you have not received a ballot and feel that you should, please contact the NY Wine & Grape Foundation and they will assist you in getting a ballot. If you have questions about the Grape Research Order, or are on the fence and not sure how to vote, visit the Frequently Asked Question page on the NY Wine & Grape Foundation website <https://www.newyorkwines.org/researchorder>



Darcy Telenko, CCE Erie County Extension Vegetable Specialist and Stephen Reinert, Chair of NYSAES Horticulture Dept. speak to audience at the annual vegetable day program held at CLEREL. Photo by: Thomas Bjorkman

Business Management

Kevin Martin, Penn State University, LERGP, Business Management Educator

Tornado or Straight Line Wind? A Headache and a Loss for Portland, NY Growers

While hurricanes wreak havoc across the Caribbean, Texas and likely Florida, the Portland area has had its own serious but relatively minor weather event. Likely a tornado, possibly straight line winds, came tearing through woods and vineyards earlier this week. The devastation presents a serious challenge right before harvest, while the canopy is heavy. It appears many growers do not have access to insurance that would adequately cover their losses in this type of event. Insurers are struggling to label a trellis as personal property or structures. As a structure, most growers do not list it on their policy. If they



did, I imagine the insurance would be expensive. The structure is both more vulnerable to wind and other damage than a typical structure, and also more valuable. As personal property, the value of the personal property might also be a barrier to insurance. Most growers do not carry personal property coverage on their vineyards. Even if they did, I question whether or not an adjuster would ultimately classify a trellis as personal property.

Reconstructing the damaged trellis will likely cost growers between \$1,000 and \$5,000 per damaged acre. Damage is significant enough that fruit loss will be meaningful. The weight of the trellis may increase repair costs even further. Overall, it really is just terrible luck in a very localized spot. Just a reminder, this winter, have a conversation with your agent. It may not be practical to get coverage to protect yourself from these losses. It does make sense, to know what is covered and what isn't. Also, to know what types of coverage are available and what that coverage would cost.

If it is available, one option might be to put a cap of \$10,000 or \$20,000 on the damage. If devastating trellis damage is localized (unlike a hurricane), that may be a way to obtain affordable coverage. It is a tool commonly used in business and homeowner insurance riders to cover additional items not typically covered in standard policies. Non-standard insurance does get expensive quickly, so liability limits tend to make it more affordable.





INSURING GRAPES

NY, 2017

Crop insurance is a safety net for farmers that helps you **manage risk**. If you have a crop failure, crop insurance can help you farm again next year.

Important Insurance Deadlines

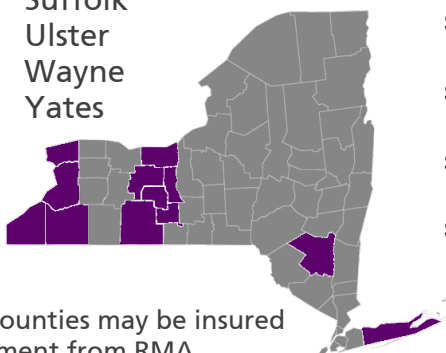
- **Aug. 15, 2017:** Premium Billing Date
- **Nov. 20, 2017:** Sales Closing, Policy Change, Cancellation, Termination Date
- **Nov. 20, 2017:** End of Insurance Period
- **Jan. 15, 2018:** Acreage / Production Report Date



Over 40 grape varieties are insurable in these counties:

Cattaraugus
Chautauqua
Erie
Niagara
Ontario
Schuyler
Seneca
Steuben

Suffolk
Ulster
Wayne
Yates



Grapes in other counties may be insured by written agreement from RMA

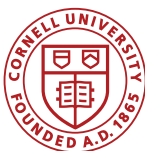
NYS Grape Crop Insurance Performance



for every \$1 grape producers spent on crop insurance premiums from 2012 to 2016, **they received \$2.07** in losses paid, on average

Learn more & sign up:

Explore your personalized crop insurance costs and loss payments under different yield outcomes at ag-analytics.org. To sign up, contact a crop insurance agent. Find an agent using the Agent Locator tool at rma.usda.gov/tools/agent.html



IPM

Tim Weigle, NYSIPM, Cornell University, LERGP Team Leader

Grape Berry Moth

At this point in the season we are providing the table of degree-day accumulations more for those who are curious than anything else. We are past the point where we need to worry about a fourth generation occurring (it won't) but for those vineyard blocks that have a history of late season GBM damage there is still concern about eggs from the tail end of the third generation hatching and larvae entering the berries. In vineyards where late season damage is a yearly problem, there are very few options available. Continued coverage with an insecticide program is one option if you have a sprayer that can penetrate the canopy and get the insecticide on the clusters. The other option is to plan your harvest to remove as many of the high risk areas as possible early in the season.

NEWA Location	Wild grape bloom date*	DD Total on Sept 7, 2017	Forecasted DD for Sept 12, 2017
Versailles	May 28	2075	2126
Dunkirk Airport	June 1	2006	2062
Sheridan	May 28	2192	2245
Silver Creek	May 31	2136	2195
Portland Escarp.	May 28	2142	2194
Portland	May 29	2163	2215
Ripley	May 28	2156	2215
North East Escarp	May 27	2154	2203
Harborcreek	May 28	2217	2278
North East Lab	May 29	2260	2322
Erie Airport	May 26	2194	2256
Ransomville	June 3	2059	2114
Somerset	June 8	1972	2026
North Appleton	June 11	1832	1888
* Estimated date provided by NEWA website			
Westfield station is off line for maintenance			

Grape Rootworm

We wrapped up scouting for grape rootworm this past week and were surprised to find that grape rootworm adults were still present, although at extremely low levels, in the control vineyards where no insecticide have been applied. Again, this is more of a curiosity type of information, but it does provide us with information on the potential timeframe this pest can be in the vineyard.

PLEASE PARTICIPATE IN THE ONLINE NEWA SURVEY

EDITORS NOTE: NEWA provides weather and pest model information for a large number of commodities across an ever increasing number of states. It is important for grape growers in New York and Pennsylvania to provide your input into this survey so any improvements to the NEWA website are made with the grape industry in mind. While this is a busy time of year, I encourage you to take the 10 minutes out of your busy day to complete this survey.

The Network for Environment and Weather Applications (NEWA) wants you to take our online survey — it'll only take about 10 minutes of your time.

Take the survey now:

https://cornell.qualtrics.com/jfe/form/SV_0GRihOIDI5HwbR3

Whether you've used NEWA's online pest forecast models for years or have never used NEWA at all, we will benefit from your responses. Why? Because we are building a new website at newa.cornell.edu, one that'll be as easy to use on your smart phone as on your desktop, and we want to build it the way you want it to be.

NEWA is an online agricultural decision support system that uses real time weather data, streamed over the internet from 573 weather stations throughout the Northeast, Midwest and mid-Atlantic. NEWA provides insect and plant disease pest management tools, degree days, and weather information for growers, consultants, Extension educators, faculty, and others.

NEWA models and resources are available free of charge, and are used to make informed localized crop management decisions. The NEWA website will be upgraded soon and we want to know what users', new and old, want and need out of the new website.

All responses are anonymous and confidential and will not be shared with any outside group.

Thank you for participating!

For more information:

Dan Olmstead
315.787.2207
dlo6@cornell.edu

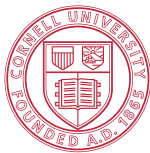
NEWA Coordinator, New York State IPM Program
Cornell University, NYSAES
630 West North Street
Geneva, NY 14456

NEWA is a Partnership of the New York State Integrated Pest Management Program and the Northeast Regional Climate Center.



Northeast Regional Climate Center

Employment Opportunity:



Cornell University New York State Integrated Pest Management Program

Timothy Weigle

Senior Extension Associate

Grape and Hop IPM Specialist

Lake Erie Regional Grape Program CLEREL

6592 West Main Road

Portland, NY 14769

Phone: 716-792-2800

Fax: 716-792-2805

E-mail: thw4@cornell.edu

www.nysipm.cornell.edu

NEWA Service Technician Position Available

A 19 hour per week position is currently available with the NYS IPM Program and Lake Erie Regional Grape Program and will be housed at the Cornell Lake Erie Research and Extension Laboratory in Portland, NY. This position will provide program support to ensure the reliability of data produced by the weather data loggers associated with NEWA. (Network for Environment and Weather Applications <http://newa.cornell.edu>) that will ultimately enhance the profitability and sustainability of the grape industry served by the LERGP.

Position responsibilities include, but are not limited to;

- Responsible for monitoring NEWA stations in the Lake Erie region.
- Assist project team members to ensure NEWA station malfunctions are identified and corrected through phone conversations and on-site maintenance visits.
- Assist project team members in increasing adoption of weather and pest model information found on NEWA through scouting vineyards of participating growers.
- Responsible for the completion of accurate reports and working with the Grape IPM specialist in submission of reports to funding partners.

Qualifications

Experience working as part of a project team. Must possess sound judgment, excellent reasoning and decision-making skills, meticulous record keeping and ability to work with diverse personalities. Must be able to work under pressure with a great deal of initiative. Must have excellent organizational skills with the ability to prioritize multiple projects. Ability to work well with others is required while creating a high-quality and respectful work environment. Must be able to work independently while supporting the efforts of an overall team. Ability to communicate with tact and diplomacy with a wide range of internal and external constituencies is a must. Excellent writing and verbal communications skills. Proficiency in the use of computer hardware and software used in communication. Demonstrated ability to work independently; yet be an effective contributor to team efforts. Will be a self-starter with the ability to troubleshoot, and suggest solutions to problems. Must be able to meet the travel requirements of the position, including having reliable transportation and having and maintaining a valid driver's license. Must exercise sound and ethical judgment when acting on behalf of the University.

Preferred Qualifications

Experience in troubleshooting and maintaining electronic equipment and digital communication devices is preferred.

Please contact Tim Weigle, NYS IPM Program, Cornell University at thw4@cornell.edu for more information.



PA Update

Andy Muza, Extension Educator, Penn State

In the Vineyard (9-7-17)

Downy Mildew – Be on the lookout for late season downy mildew. I am starting to find a small number of downy mildew lesions popping up in a few Niagara blocks (Figure 1). Cooler temperatures and more frequent and rain events may cause flare ups of downy mildew to occur, especially in blocks with more susceptible varieties (e.g., Niagara, Delaware, etc.). In the past, I have seen portions of Niagara blocks defoliated due to late season downy mildew infections. However, since inoculum levels have been so low this season, I don't expect any major problems. Be aware that this disease has the potential to get out of hand quickly if the weather conditions are favorable.

Powdery Mildew – tiny, black fruiting bodies are becoming more evident on leaves and rachises infected with powdery mildew. These “chasmothecia” are the overwintering structures of the powdery mildew fungus which begin forming in late summer. These fruiting bodies are rain washed from infected tissues onto the bark of vines and serve as primary inoculum sources for next season. The more powdery mildew evident in a block, the more “chasmothecia” will be formed, which translates into a higher number of inoculum sources the following season.

Phomopsis - Keep an eye out for potential crop loss (e.g., shelling of berries, rachises shriveling) the closer harvest approaches. If “above normal” shelling of berries, before or during harvest, occurs in any of your blocks then one of the causes could be due to phomopsis. I expect to see some crop loss due to early season infections on rachises and berry stems (pedicels) but to what extent remains to be seen.



Figure 1. Niagara leaf with downy mildew lesions. Photo: Andy Muza, Penn State.

North East PA Update

Bryan Hed, Research Technologist, Lake Erie Grape Research and Extension Center

Weather: At our location by the lake, our August rainfall total was 2.35", about an inch below our long term average. We have recorded 1.61" of precipitation so far in September. Growing degree accumulations totaled 639 in August (a little above average). We have now accumulated 2307 gdds since April 1. Rain is in the forecast for today and tomorrow with high temperatures below average over the next 3 days. The weekend looks to be dry and beyond that, the forecast predicts rain again next Wednesday.

Diseases: Abundant rainfall over the past week has brought downy mildew into focus again. Although the recent weather has not generated an infection period at our location (according to DMCast), several infection periods were recently generated at the North East Escarpment location; you still need to scout your vineyards. Walking a *V. vinifera* vineyard late last week not far from the North East lab revealed fresh, sporulating downy mildew lesions on new leaves at the ends of shoots. Take the time to scout blocks of susceptible varieties; this disease is relatively easy to spot and if left uncontrolled, can do a tremendous amount of damage, especially to the more susceptible wine varieties. I'm not saying that you should just go out and spray. I am saying that the recent wet weather calls for an accurate assessment of your susceptible blocks for this disease so you know if you have a problem developing.





The Only FRAC Group U6 Fungicide

Labeled for Grapes & Cucurbits

Highly Effective on Powdery Mildew

No Cross-Resistance

Protectant / Preventative Action



FRAC Group 3

Labeled for Grapes

Controls Powdery Mildew & Black Rot

Protectant + Curative Activity

Highly Systemic

Badge[®] SC

Badge[®] X₂



High Quality Copper
Excellent Mixing Characteristics
Highly Active at Lower Rates
Enhanced Crop Safety

NeXter[®]

Miticide/Insecticide

Mite control on Grapes
Knockdown and Residual

Dave Pieczarka
315.447.0560



Torino[®] is a registered trademark of Nippon Soda Company, LTD. EPA Reg No 8033-103-10163. Mettle[®] SC, Badge[®] SC, Badge[®] X₂ are registered trademarks of Isagro USA. Mettle EPA Reg No 80289-8-10163. Badge SC EPA Reg No 80289-3-10163. Badge X₂ 80289-12-10163. NeXter is a trademark of Nissan Chemical Industries. EPA Reg No 81880-4-10163. Always read and follow label directions

Clover Hill Sales^{LLC}

10401 Sidehill Road, North East, PA 16428

814-725-3102

cloverhill@roadrunner.com

www.cloverhillsales.com



Harvester Parts and Belting
Southern Yellow Pine Posts
And So Much More!

Rev. 02/17_BP&Ink

LANDPRO[®]

EQUIPMENT

Formerly

Z&M Ag and Turf and Lakeland Equipment

Alexander • Avon • Brockport • Chili
Clymer • Edinboro, Pa • Falconer • Hall
Macedon • Oakfield • Savannah • Springville

WWW.LANDPROEQUIPMENT.COM



Helping farmers to protect their revenue and preserve their equity.

I will show you how crop insurance is a vital part of your overall risk management plan. Utilizing the policy that works best for your unique situation, you can take less risk and enjoy a better quality of life.

Mark C. Muir Agency
Mark C. Muir

Serving clients in NY, OH, and PA
10509 Route 6 • Union City, PA 16438-9707
Phone: (814) 397-0033

DCIS - Toll Free: (866) 669-3429 • Email: info@diversifiedcropinsurance.com | Diversified Crop Insurance Services is a company of CCB Enterprises, Inc. and is an Equal Opportunity Provider. 02/16 00016

LaPorte

Farm Equipment

"Large and small, we sell them all"

Sales - Parts - Service
Westfield NY (716) 326-4671

CASE IH

AGRICULTURE

www.laportefarmequipment.com

Custom Built 2 Tank Weed Sprayer



We sell and service Case IH tractors, Oxbo Harvesters, and Turbomist sprayers. We also custom manufacture single and dual tank sprayers, pre-pruners, brush sweepers, wire winders.



WOODS NO TILL VINEYARD DRILL

Available for Rent

Contact Mike @ Larry Romance & Son

716-679-3366

Tractorsales@netsync.net

NORTH EAST FRUIT GROWERS, INC.

2297 KLOMP ROAD, NORTH EAST, PA 16428

SPECIALIZING IN RETAIL:

SPRAY MATERIALS
FERTILIZER (BAG & BULK)
VINEYARD & ORCHARD SUPPLIES
PRUNING SUPPLIES
PACKAGING FOR FRUIT & VEGETABLES
SPRAYER PARTS
TANKS, PUMPS, HOSE
GLOVES, RAIN GEAR, FOOTWEAR
SAFETY MATERIALS
GRAPE POSTS
WIRE / TIE TWINE
DRAIN TILE
SEED & MORE

COME BY OR GIVE US A CALL

(814) 725-3705

HOURS OF OPERATION:

MONDAY - FRIDAY 8:00AM - 5:00PM
SATURDAY 8:00AM - NOON



LERGP Links of Interest:

Go to <http://lergp.cce.cornell.edu/> for a detailed calendar of events, registration, membership, and to view past and current Crop Updates and Newsletters.

LERGP Web-site:

<http://lergp.com/>

Cornell Lake Erie Research & Extension Laboratory Facebook page

<https://www.facebook.com/Cornell-Lake-Erie-Research-and-Extension-Laboratory-678754995584587/?fref=ts>

Efficient Vineyard Web-site:

<https://www.efficientvineyard.com/>

Table for: Insecticides for use in NY and PA:

<http://lergp.cce.cornell.edu/submission.php?id=69&crumb=ipm|ipm>

Crop Estimation and Thinning Table:

http://nygpadmin.cce.cornell.edu/pdf/submission/pdf65_pdf.pdf

Appellation Cornell Newsletter Index:

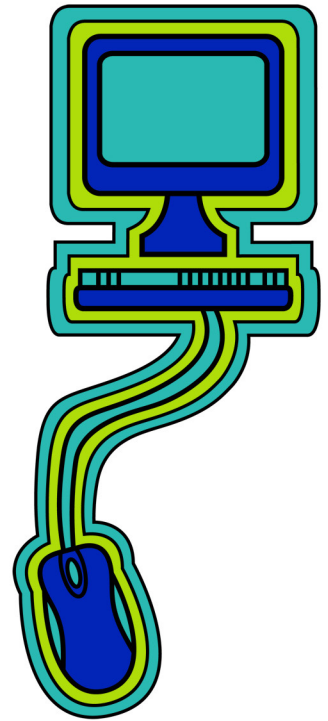
<http://grapesandwine.cals.cornell.edu/cals/grapesandwine/appellation-cornell/>

Veraison to Harvest newsletters:

<http://grapesandwine.cals.cornell.edu/cals/grapesandwine/veraison-to-harvest/index.cfm>

NEWA:

<http://newa.cornell.edu/>





Lake Erie Regional Grape Program Team Members:

Andy Muza, (ajm4@psu.edu) Extension Educator, Erie County, PA Extension, 814.825.0900

Tim Weigle, (thw4@cornell.edu) Grape IPM Extension Associate, NYSIPM, 716.792.2800 ext. 203

Kevin Martin, (kmm52@psu.edu) Business Management Educator, 716. 792.2800 ext. 205

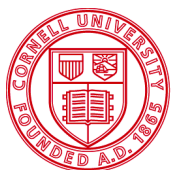
This publication may contain pesticide recommendations. Changes in pesticide regulations occur constantly, and human errors are still possible. Some materials mentioned may not be registered in all states, may no longer be available, and some uses may no longer be legal. Questions concerning the legality and/or registration status for pesticide use should be directed to the appropriate extension agent or state regulatory agency. Read the label before applying any pesticide. Cornell and Penn State Cooperative Extensions, and their employees, assume no liability for the effectiveness or results of any chemicals for pesticide usage. No endorsements of products are made or implied.

Cornell University Cooperative Extension provides equal program and employment opportunities.

Contact the Lake Erie Regional Grape Program if you have any special needs such as visual, hearing or mobility impairments.

CCE does not endorse or recommend any specific product or service.

THE LAKE ERIE REGIONAL GRAPE PROGRAM at CLEREL
6592 West Main Road
Portland, NY 14769
716-792-2800



Cornell University
Cooperative Extension



College of
Agricultural
Sciences