



Finger Lakes Vineyard Update

In the Vineyard

Hans Walter-Peterson



Most varieties by now are well into veraison in the Finger Lakes, and by this time next week, harvest will have gotten underway with Constellation opening its doors to start receiving Aurore fruit. Terry Bates sent out a note that the team in Lake Erie had “called” veraison in their Concord phenology vines on Sunday, August 20 – 69 days after bloom, which is the average number of days between bloom and veraison for Concord across years (and regardless of weather

conditions during that period).

Berry size still appears to be well above normal this year. We will start getting a sense of whether that’s actually true and to what extent when we start collecting samples as part of the Veraison to Harvest project, which will begin the first week of September. In many cases this year, the combination of high fruitfulness (clusters per shoot and per vine) due to last year’s sunny weather in the post-bloom period, reasonable berry set (berries per cluster) and larger than average berry weight are coming together in what look to be larger than average crops.

Because of that fact, there might be the temptation to reduce the crop load on the vines near the end of veraison in order to encourage better ripening of the remaining fruit. In some ways it might seem to make sense – reduce the number of buckets that the vine has to fill and the remaining buckets will get more of the good stuff (e.g., sugars, flavors, aromas, tannins). The problem is that the research that has looked at the timing of crop thinning in many parts of the world doesn’t seem to show that cluster thinning at or after veraison makes a whole lot of difference by the time harvest rolls around. Crop thinning earlier in the season, however, has been shown to have a pretty consistent effect on ripening in most cases.

There are plenty of factors that will influence how a grapevine responds to any particular treatment or practice, so I always encourage growers to test out different ideas on their own farms. In that vein, if there is a desire to do some cluster thinning now, I would suggest also leaving some panels where no thinning is done and see how the fruit in those two treatments (thinned and unthinned) compare.

You can read some more on this question of fruit thinning after veraison [in this article](#), which appeared in our newsletter a few years ago.

Grape Price List

Just FYI, we are planning to send out an initial version of the Grape Price list by the end of the week so people can see what things look like so far. We will publish a “final” version of the list next week and send it out to everyone, as well as post it on our website.

In This Issue:	
In the Vineyard	pg. 1
IPM	pg. 2
Events	pg. 3
GDD’s	pg. 4

IPM

Hans Walter-Peterson

With the onset of veraison, the concern about managing botrytis bunch rot rises higher on the priority list in Finger Lakes vineyards, especially in a year like this with the potential for higher pressure than normal. Below is a quick summary of the materials labeled for botrytis, grouped by their FRAC code (for the portion that controls botrytis in combination products). Materials with the same FRAC code have similar modes of action, and therefore growers should be rotating their chemicals to avoid applying materials with the same code as much as possible in order to minimize the potential for development of resistant populations to that category of fungicides.

Further details about each of the materials listed here can be found in the 2017 Grape IPM Guidelines, where this information is taken from.

FRAC	Product	PHI	Comment
2	Rovral/ Meteor	7 days	If not used for a few years, can be added back in to rotation on limited basis (1x per season).
7	Endura	14 days	Use higher rate (8 oz/acre) for botrytis control; make no more than 2 applications of Group 7 materials per season.
7	Luna Experience	14 days	Combination w/ tebuconazole (Group 3). Use 8.6 oz/acre rate for botrytis control. Make no more than 2 applications of Group 7 materials per season.
7	Pristine	14 days	Combination w/ strobilurin (Category 11). Use 19 oz/acre rate for botrytis control. Make no more than 2 applications of Group 7 materials per season.
9	Inspire Super	14 days	Contains cyprodinil, same a.i. as Vanguard. Full rate only contains 70% of full rate of Vanguard. No more than 2 applications of Group 9 materials per season.
9	Vanguard	7 days	Make no more than 2 applications of Group 9 materials per season.
9	Switch	7 days	Combination with fludioxonil (Group 12); 14 oz/acre rate = 6.8 oz/acre of Vanguard.
9	Scala	7 days	Different a.i. but same mode of action; See Vanguard.
11	Flint	14 days	3 oz/acre rate for botrytis control; botrytis resistance to strobies reported in other regions so reliance on them over long-term is risky.
17	Elevate	0 days	Only material with this code.
N/A	Botector	0 days	Biopesticide that competes with botrytis for space on grapes. Not tested under high-pressure conditions in NY.

Upcoming Events

Don't forget to check out the calendar on our website (<http://flgp.cce.cornell.edu/events.php>) for more information about these and other events relevant to the Finger Lakes grape industry.

Tailgate Meeting

Tuesday, August 29 4:30 – 6:00 PM
Lamoreaux Landing Wine Cellars
9224 Route 414
Lodi, NY

Our ninth and final Tailgate Meeting of the year will be held at Lamoreaux Landing in Lodi on Tuesday, August 29.

These meetings are held every other week at various grape farms around the Finger Lakes, and are intended to be informal, small-group meetings where FLGP staff and growers can ask questions and discuss issues about vineyard management, IPM strategies or other topics appropriate for that point in the growing season. 0.75 DEC recertification credits will be available.

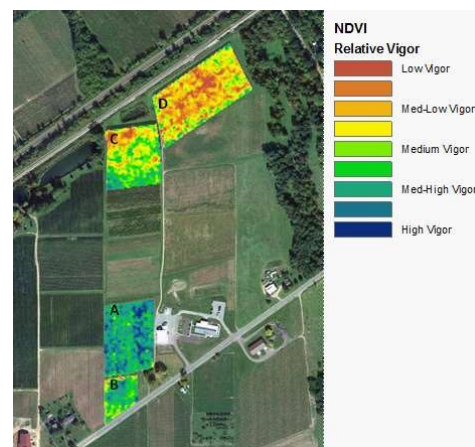
FLGP Field Meeting

Thursday, August 24 4:30 – 6:00 PM
Finger Lakes Teaching & Demonstration Vineyard at
Anthony Road Wine Company
1020 Anthony Road, Penn Yan NY ([click here for a map of where to park](#))

For a number of years, growers have been hearing about the use of various digital imaging technologies in agriculture. We have had a few different talks by members of the Lake Erie Regional Grape Program at our B.E.V. NY conference about their work using NDVI images and other technology to understand vineyard variability, and then using that information to improve management practices, including the incorporation of various mechanization tools.

Next week, growers will get a chance to see some of this technology up close and person. Terry Bates and Jackie Dresser from the LERGP will be here to show us some of the imaging equipment that they use in their work on the “Efficient Vineyard” SCRI project that Terry is leading. In addition, Jim Meyers, our new viticulture extension specialist in Eastern NY, and Justine Vanden Heuvel will be here to discuss how they are using NDVI imagery captured by a drone to help growers better manage their harvest. Both groups will present data from a local vineyard that they will scan earlier that day in order to provide an example of how the two different systems work, and what types of information each one can provide. We'll talk about the ways that growers can potentially use this kind of data to improve their vineyard management.

We will also be discussing and demonstrating a method we have been working on to spread cover crop seed under the vine trellis as part of a project funded by the NY Farm Viability Institute. Justine Vanden Heuvel will review some of the research behind the practice, and we will show an example of a row seeded with buckwheat earlier this season.



Source: lergp.com

2017 Growing Degree Days and Rain Fall

FLX Teaching & Demonstration Vineyard – Dresden, NY					
Date	Hi Temp (F)	Lo Temp (F)	Rain (inches)	Daily GDDs	Total GDDs
8/16/17	74.9	59.0	0.00	17.0	1947.6
8/17/17	84.7	56.6	0.01	20.7	1968.3
8/18/17	85.7	71.3	0.09	28.5	1996.8
8/19/17	78.6	64.8	0.00	21.7	2018.5
8/20/17	81.1	61.3	0.00	21.2	2039.7
8/21/17	87.6	62.2	0.00	24.9	2064.6
8/22/17	86.9	67.9	0.38	27.4	2092.0
Weekly Total			0.48"	161.3	
Season Total			19.39"	2092.0	

GDDs as of August 22, 2016: 2220.4

Rainfall as of August 22, 2016: 9.03"



Seasonal Comparisons (at Geneva)

Growing Degree Day

	2017 GDD ¹	Long-term Avg GDD ²	Cumulative days ahead (+)/behind (-) ³
April	125.8	64.0	+12
May	219.1	252.7	+3
June	492.7	480.8	+3
July	624.0	641.1	+1
August	442.1	591.7	+2
September		353.5	
October		106.4	
TOTAL	1903.5	2490.3	

¹ Accumulated GDDs for each month.

² The long-term average (1973-2016) GDD accumulation for that month.

³ Numbers at the end of each month represent where this year's GDD accumulation stands relative to the long-term average. The most recent number represents the current status.

2017 Growing Degree Days and Rain Fall

Precipitation

	2017 Rain ⁴	Long-term Avg Rain ⁵	Monthly deviation from avg ⁶
April	3.42"	2.85	+0.57"
May	5.35"	3.08	+2.27"
June	4.00"	3.61	+0.39
July	7.42"	3.36	+4.06"
August	3.55"	3.13	
September		3.64	
October		3.22	
TOTAL	23.74"	22.95"	

⁴ Monthly rainfall totals up to current date

⁵ Long-term average rainfall for the month (total)

⁶ Monthly deviation from average (calculated at the end of the month)

Additional Information



Become a fan of the [Finger Lakes Grape Program on Facebook](#), or follow us on [Twitter \(@cceflgp\)](#) as well as YouTube. Also check out our website at <http://flgp.cce.cornell.edu>.

Got some grapes to sell? Looking to buy some equipment or bulk wine? List your ad on the [NY Grape & Wine Classifieds website](#) today!

Cornell University Cooperative Extension provides equal program and employment opportunities. CCE does not endorse or recommend any specific product or service. This program is solely intended to educate consumers about their choices. Contact CCE if you have any special needs such as visual, hearing or mobility impairments.

Finger Lakes Grape Program Advisory Committee

Eric Amberg- Grafted Grapevine Nursery
Bill Dalrymple- Dalrymple Farm
Matt Doyle- Doyle Vineyard Management
Eileen Farnan- Barrington Cellars
Chris Gerling- Cornell University Extension
Mel Goldman- Keuka Lake Vineyards
Luke Haggerty- Constellation Brands
Tina Hazlitt- Sawmill Creek Vineyards
Cameron Hosmer- Hosmer Winery
Harry Humphreys- Overlook Farms
Richard Jerome- Jerome's U-Pick
Gregg McConnell- Farm Credit East
Serena Michels- White Pine Vineyard
John Santos- Hazlitt 1852 Vineyards
Dave Smith- Smith Brothers Farms
Justine Vanden Heuvel- Cornell University
Derek Wilber- Swedish Hill Winery



FINGER LAKES VINEYARD UPDATE

Is published by

Cornell Cooperative Extension

Finger Lakes Grape Program

Ontario, Schuyler, Seneca, Steuben, Wayne and Yates Counties

417 Liberty Street, Penn Yan, NY 14527

315.536.5134