



The Lake Erie Regional Grape Program

Crop Update July 7, 2017



Building Strong and Vibrant New York Communities

Diversity and Inclusion are a part of Cornell University's heritage. We are a recognized employer and educator valuing AA/EEO, Protected Veterans, and Individuals with Disabilities.

Dates of interest:



Wednesday, July 12- *Coffee Pot- 10:00am- Szklenski Farms, 8601 Slade Rd. Harbor Creek PA 16421*

see the full schedule located in this Crop Update.



Monday, July 10- *Grape Market Order Public Hearing, CLEREL, 6:00pm-8:00pm*

Tuesday, July 11- *Grape Market Order Public Hearing, CLEREL, 10:00am-12:00pm*



Wednesday, August 2, 2017- *LERGP Twilight Meeting, Gravel Pit Park, 10300 W Main St. North East, PA 16428*



Friday, August 11- *LERGP Summer Grower Conference- come join us in celebrating 25 years of service! See registration information at end of this Crop Update!*



Saturday, August 12- *LERGP Open House- We would like to invite our neighbors to see what it is that we do here at CLEREL.*



Saturday, August 19- *LERGP Hops Production in the Lake Erie Region Conference- see registration information at the end of this Crop Update*



ATTENTION

NEW YORK STATE GRAPE GROWERS:

Members of the New York State grape growing industry are pursuing a vote for a Research & Development Order.

A Research & Development Order, AKA a market order, is a ***GROWER SUPPORTED, GROWER FUNDED, GROWER LED*** funding stream for research that will benefit **ALL** New York grape growers.

The New York State Department of Ag & Markets will hold Public Meetings (see schedule on the left) to receive grower feedback.

ASK QUESTIONS...

GET THE FACTS...

MAKE AN INFORMED DECISION!

VOTE!!!

Grower Supported ~ Grower Funded ~ Grower Led



PUBLIC MEETINGS

June 28, 2017 — 6:00 to 8:00 PM

Hudson Valley Research Library
3357 US 9W
Highland, NY 12528



June 30, 2017 — 10:00 AM to 12:00 PM

Cornell Cooperative Extension of Suffolk County
423 Griffing Avenue, Suite 100
Riverhead, NY 11901



July 10, 2017 — 6:00 to 8:00 PM



July 11, 2017 — 10:00 AM to 12:00 PM

Cornell Lake Erie Laboratory
6592 West Main Road
Portland, NY 14769



July 12, 2017 — 10:00 AM to 12:00 PM

NYSAES Jordan Hall
614 West North Street
Geneva, NY 14456



July 13, 2017 — 10:00 AM to 12:00 PM

Cornell Cooperative Extension
203 North Hamilton Street
Watertown, NY 13601

The New York Wine and Grape Foundation partnered with the [New York State Wine Grape Growers](#) and the [Lake Erie Regional Grape Program, Inc.](#), to submit a petition last fall to NYS Department of Agriculture and Markets (NYSDAM) to establish a statewide [“Grape Research and Development Order.”](#) The “Research and Development Order”, commonly known as a market order, is an assessment administered cooperatively by the New York State Urban Development Corporation (UDC) and NYSDAM. [It will provide a grower supported, grower funded and grower led funding stream for research.](#)

The grape industry in New York State, which is the 2nd largest producer of juice grapes and 3rd largest producer of wine nationally, is an over five-billion dollar per year business. Research in viticulture and enology ensures the future vitality of our grape, grape juice, and wine industries.

The need for problem-solving research will only increase to meet the challenges of identifying rapid responses to emerging pests and pathogens as a result of climate variability, winter injury, consumer preferences and changes in markets. The proposed “Grape Research and Development Order” will be a reliable source of funding to support problem-solving research and extension projects that will benefit all New York State grape growers.

Other New York State agricultural commodities and [US grape growing regions](#) utilize grower assessments to support research. There are five active “Research and Development Orders” in New York State: Dairy, Apple, Cabbage, Onion, and Sour Cherry. The New York apple industry offers a successful example of this mechanism. The apple growers voted to establish the New York Apple Research and Development Program in 1990. Since then their program has generated over \$200,000 annually. The apple growers recently approved to double their assessment because their order has been successful at [solving industry problems](#), [generating profitable practices](#), and introducing [new products and technologies](#).

The NYSDAM will hold public meetings to receive grower feedback about the proposed “Grape Research and Development Order”:

July 10, 2017 — 6:00 to 8:00 PM

Cornell Lake Erie Laboratory
6592 West Main Road
Portland, NY 14769

July 11, 2017 — 10:00 AM to 12:00 PM

Cornell Lake Erie Laboratory
6592 West Main Road
Portland, NY 14769

July 12, 2017 — 10:00 AM to 12:00 PM

NYSAES Jordan Hall
614 West North Street
Geneva, NY 14456

July 13, 2017— 10:00 AM to 12:00 PM

Cornell Cooperative Extension
203 North Hamilton Street
Watertown, NY 13601

Public comments can also be emailed to Mark McMullen, Program Manager, Department of Agriculture and Markets, Mark.McMullen@agriculture.ny.gov

Business Management

Kevin Martin, Penn State University, LERGP, Business Management Educator

Evolution of Crop Insurance

I know many of you are certified crop insurance experts from our educational coffee pot meetings this year. Many of you expressed interest in the online tools developed by Cornell. I thought you might be more likely to recall the tools available online, if I email you the information.

For those of you that have not attended coffee pot meetings, crop insurance remains one of the top three risk management tools to protect growers from the financial harm caused by volatile grape production. We've been helping growers minimize their premiums, while maximizing their risk protection. Through the years crop insurance has changed and programs like supplemental coverage options or yield exclusion may provide more efficient ways to increase the amount of yield protection a farm has.

In the alternative, some growers of diversified agriculture may be interested in whole farm revenue. WFR is basically a replacement for the old AGR and AGR-Lite programs. It does require a grower to produce more than one crop, which excludes many grape growers.

For more information, check out the flyer, the website, and an upcoming coffee pot meeting. As always, if you'd like some specific information on your farm feel free to give me a call.



INSURING GRAPES

NY, 2017

Crop insurance is a safety net for farmers that helps you **manage risk**. If you have a crop failure, crop insurance can help you farm again next year.

Important Insurance Deadlines

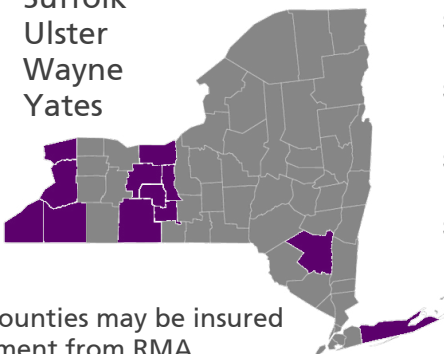
- **Aug. 15, 2017:** Premium Billing Date
- **Nov. 20, 2017:** Sales Closing, Policy Change, Cancellation, Termination Date
- **Nov. 20, 2017:** End of Insurance Period
- **Jan. 15, 2018:** Acreage / Production Report Date



Over 40 grape varieties are insurable in these counties:

Cattaraugus
Chautauqua
Erie
Niagara
Ontario
Schuyler
Seneca
Steuben

Suffolk
Ulster
Wayne
Yates



Grapes in other counties may be insured by written agreement from RMA

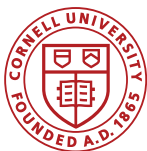
NYS Grape Crop Insurance Performance



for every \$1 grape producers spent on crop insurance premiums from 2012 to 2016, **they received \$2.07** in losses paid, on average

Learn more & sign up:

Explore your personalized crop insurance costs and loss payments under different yield outcomes at ag-analytics.org. To sign up, contact a crop insurance agent. Find an agent using the Agent Locator tool at rma.usda.gov/tools/agent.html



IPM

Tim Weigle, NYSIPM, Cornell University, LERGP Team Leader

Grape Rootworm – scouting conducted on July 3, 2017 in the eight project vineyard blocks and emergence of grape rootworm adults continued with higher populations found in all eight blocks. Populations ranged from very low (1) to moderate to high levels (32) adult grape rootworm found (we are still trying to determine what is a high population). Those vineyards where an insecticide had been applied decreased the populations to zero. All vineyard blocks will be scouted the first week of July to document continued emergence, or reemergence, patterns.

It may sound like a broken record, but it is not too late to scout for grape rootworm. Traditional timing of scouting was the 4th of July weekend so you may be catching peak emergence by going out now (only continued research will tell us if that is true). We have several materials available for use against grape rootworm. In alphabetical order they are; Admire Pro, Danitol, Leverage 360, Sevin, and Sniper (a generic bifenthrin) If you are growing grapes in New York and want to use Admire Pro, Danitol, Leverage 360 or Sniper for grape rootworm you will need a copy of the FIFRA 2ee recommendation for that use. You can find a copy of these recommendations on the LERGP website under IPM at;

<http://lergp.cce.cornell.edu/ipm.php?season=summer>

Pennsylvania growers do not have this restriction as they can use any of the above mentioned insecticides as they are labeled for use in grapes.

Grape Berry Moth – According to the Phenology-based degree model found on NEWA, most sites have reached the point where a shift to contact insecticides is necessary. Materials that need to be ingested (i.e. Altacor or Intrepid (PA only) are still good choices for sites which have not yet recorded 810 DD. To help you make that determination for the NEWA site nearest you <http://newa.cornell.edu> you can scroll to the bottom of the grape berry moth results page for that station to find the pest status and pest management options tailored to that site (see figure 1). *Using good materials, and ensuring good coverage at this time, for this generation, is critical in helping to limit the size of future generations.*

NEWA Location	Wild grape bloom date*	DD Total on July 7, 2017	Forecasted DD for July 12, 2014
Versailles	May 28	829	941
Dunkirk Airport	June 1	764	870
Sheridan	May 28	865	976
Silver Creek	May 31	789	893
Portland Escarp.	May 28	840	949
Portland	May 29	834	942
Westfield	May 28	868	976
Ripley	May 28	873	985
North East Escarp	May 27	858	968
Harborcreek	May 28	866	982
North East Lab	May 29	857	974
Erie Airport	May 26	898	1015
Ransomville	June 3	749	863
Somerset	June 8	672	786
North Appleton	June 11	574	688
* Estimated date provided by NEWA website			

Daily Degree Days for Sheridan

Base Temp	Past	Past	Current	5-Day Forecast					Forecast Details
	Jul 5	Jul 6	Jul 7	Jul 8	Jul 9	Jul 10	Jul 11	Jul 12	
47.14F - GBM	25	28	27	20	19	24	24	24	
Accumulation	810	838	865	886	905	929	953	976	

NA - not available

Download Time: 7/7/2017

Pest Status	Pest Management
Egg-laying continues.	For materials that are contact insecticides, e.g. pyrethroids and carbamates, apply between 811 and 900 DD.

Disclaimer: These are theoretical predictions and forecasts. The theoretical models predicting pest development or disease risk use the weather data collected (or forecasted) from the weather station location. These results should not be substituted for actual observations of plant growth stage, pest presence, and disease occurrence determined through scouting or insect pheromone traps.

PA Update

Andy Muza, Extension Educator, Penn State

In the Vineyard (7-7-17)

Insects

Grape Berry Moth – GBM eggs (Figure 1) were found on berries at High and Severe risk sites checked on Wednesday (7/5). If you are going to spray for GBM, now is the time (for the majority of the sites in our region). According to the GBM Degree Day Model in NEWA <http://newa.cornell.edu/index.php?page=berry-moth>, “For materials that are contact insecticides, e.g. pyrethroids and carbamates, apply between 811 and 900 DD.” Consult the **2017 New York and Pennsylvania Pest Management Guidelines for Grapes** for a list of insecticide choices. Japanese beetle – JB are starting to show up in vineyards but numbers are low (Figure 2).

Diseases

Powdery Mildew – Concord berries are now resistant to powdery mildew infections but rachises and pedicels continue to be susceptible (Figure 3). The amount of leaves with PM is still low but, as usual, will continue to increase as the season progresses.

Black Rot – BR was found on Concord clusters at only 1 site (Figure 4). This block was 1 of the few sites where black rot was found last season.

Downy mildew – Only 1 DM leaf lesion was found in a Niagara vineyard and no DM was seen in Concord blocks.

See next page for figures 3 and 4.



GBM egg on Concord berry. Photo: Andy Muza



Japanese Beetle on Concord leaf. Photo: Andy Muza



Powdery mildew on rachis and pedicels of a Concord cluster
Photo: Andy Muza



Black rot on Concord berries. Photo: Andy Muza

North East PA Update

Bryan Hed, Research Technologist, Lake Erie Grape Research and Extension Center

Weather: June rainfall totaled 3.62" (above average) at our location by the lake. We accumulated about 541 growing degree days during June (also above average). We now have 1029 gdds as of April 1 (ahead of average). We recorded 0.33" rainfall so far in July. There is a chance of rain in the forecast today (July 6), Friday and Sunday, with temperatures staying somewhat just a little below average.

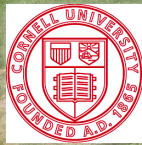
Phenology and Diseases: Concord and Niagara fruit are about 10-13 mm in diameter and are resistant to powdery mildew, but still susceptible to Black rot. Niagara fruit are resistant to direct infection of the berry by downy mildew, but cluster stems can still get infected for probably another week or two. So Niagara fruit can still be lost to this disease. We did have a couple of downy mildew infection periods during the last week of June, but vineyards on our farm, even unsprayed material looks very clean at this point. The only downy mildew I've seen develop this year has been on unsprayed Chardonnay, which is ridiculously susceptible to it. I have not seen any downy mildew on our unsprayed Niagara.

For black rot, protection will need to continue IF thorough scouting reveals the presence of infected leaves and fruit AND weather conditions turn wet (it's been relatively dry in July so far). Black rot infection that occurred during the rainy period from June 18-24 should be observable on clusters at this time (infections of fruit that occur within 2 weeks of end of bloom show up in 10-14 days). We also had a black rot infection period at the very end of June/July 1, and any disease that results from that infection period will not be revealed until the middle of July. As for downy mildew scouting, infections that slipped through your program back in late June should have already shown symptoms by now.



Lake Erie Regional Grape Program

Open House



Cornell University
Cooperative Extension

Welcomes our neighbors, near and far, to come celebrate 25 years of service with us. We are holding an Open House with hayrides through the vineyards, food and a chance for us to let people know what we do here. This is a FREE event!

- **When: Saturday, August 12, 2017**
- **Time: 10:00am - 1:00pm (hayrides on the half hour)**
- **Where: CLEREL (Cornell Lake Erie Research & Extension Laboratory)**
6592 West Main Rd.
Portland, NY 14769

Questions? Call Katie at 716-792-2800



2017 eNEWA Grape Project Subscription Sign-Up

Subscriber information

Name _____

Email address _____

City _____

Select Location(s) (circle as many as you like, or write in below)

Lake Erie Region

Appleton, North

Appleton, South

Dunkirk

Erie

Harborcreek

North East Escarpment

North East Lab

Portland

Portland Escarpment

Portland Route 5

Ransomville

Ripley

Sheridan

Silver Creek

Versailles

Finger Lakes Region

Aurora

Branchport

Dresden (FLGP/FLCC)

Dundee (Weimer)

Fayette 3 Brothers

Geneva

Geneva (Bejo)

Hector

Interlaken (Airy Acres)

Lakemont

Lansing

Lodi (Lamoreaux)

Lodi (Shalestone)

Lodi (Standing Stone)

Penn Yan

Romulus (B. wood Grove)

Romulus (Thirsty Owl)

Varick (Swedish Hill)

Watkins Glen

Watkins Glen (Lakewood)

Select eNEWA Delivery Times (write in times below) Delivery requests should be on the hour.

Mail to: Tim Weigle, CLEREL, 6592 West Main Road, Portland, NY or scan and email to thw4@cornell.edu

Make Sure You Are Counted In The Census of Agriculture

Currently, the census is the only complete count of U.S. farms and ranches and the people who operate them. It includes even the smallest plots of land – rural or urban – growing fruits, vegetables, or raising food animals, if \$1,000 or more of such products were raised and sold, or normally would have been sold, during the census year. The information produced by the Census of Agriculture guides Congress, agribusiness, policymakers, researchers, local governments and many others on the creation and funding of agricultural programs and services – decisions that can directly impact your local operations and the future of the agriculture industry for years to come.

Please note that new farmers or existing farmers who have not participated in a prior Census of Agriculture still have time to sign up to be counted through the end of June at <https://www.agcounts.usda.gov/cgi-bin/counts/>. The survey takes less than a minute – and will ensure that you receive a Census form (that you can fill out in paper form or online.) If a farmer/rancher is not on our list frame by June 30th, 2017, the producer will not have an opportunity to participate in the 2017 Census of Agriculture.

For more information about the census, please visit www.agcensus.usda.gov, follow NASS on Twitter @usda_nass, or call [\(800\) 727-9540](tel:8007279540).

This is a list for organizations that provide services to beginning farmers in the Northeastern US.

To unsubscribe from this list, send a plain text email message to blearningnetwork-L-request@cornell.edu with the word “leave” in the body of the message.

To join the list, follow the above instructions but type «join» in the message body.

THE 2017 CENSUS OF AGRICULTURE IS COMING!

Make sure you are counted.
Sign up at www.agcensus.usda.gov.

CENSUS OF AGRICULTURE

YOUR VOICE. YOUR FUTURE. YOUR OPPORTUNITY.



2017 CENSUS OF
AGRICULTURE

U.S. Department of Agriculture
National Agricultural Statistics Service



LERGP

2017 COFFEE POT MEETING SCHEDULE

Date	Time	Location	Address
May 3, 2017	10:00am	John Mason Farm	8603 West Lake Rd. Lake City, PA 16423
May 10, 2017	10:00am	CLEREL	6592 West Main Rd. Portland, NY 14769
May 17, 2017	10:00am	Brant Town Hall	1272 Brant Rd. Brant, NY 14027
May 24, 2017	10:00am	Peter Smith Farm	4472 Van Dusen Rd. Lockport, NY 14094
May 31, 2017	10:00am	Dan Sprague Farm	12435 Versailles Rd. Irving, NY 14081
June 7, 2017	10:00am	Betts' Farm	7365 East Route 20 Westfield, NY 14787
June 7, 2017	3:00pm	Archer Pratz Farm	9318 Lake Rd. North East, PA. 16428
June 14, 2017	10:00am	Jeff Schultz Farm	2707 Albright Rd. Ransomville NY 14131
June 14, 2017	3:00pm	Orton Farm	10646 West Main St. Ripley, NY 14775
June 21, 2017	10:00am	North East Fruit Growers	2297 Klomp Rd. North East, PA 16428
June 21, 2017	3:00pm	Kirk Hutchinson Farm	4720 West Main St. Fredonia, NY 14063
June 28, 2017	10:00am	Peter Loretto Farm	10854 Versailles Plank Rd. North Collins, NY 14111
June 28, 2017	3:00pm	David Nichols Farm	1906 Ridge Rd. Lewiston, NY 14092
July 5, 2017	10:00am	Leo Hans Farm	10929 West Perrysburg Rd. Perrysburg, NY 14129
July 12, 2017	10:00am	Szklenski Farms	8601 Slade Rd. Harbor Creek, PA 16421
July 19, 2017	10:00am	Liberty Winery	2861 Route 20, Sheridan, NY 14135



2017 LERGP Summer Grape Growers' Conference



Friday August 11, 2017
at CLEREL
6592 W. Main Rd.
Portland NY 14769
9:00am-4:00pm



Summer Grape Grower Conference with a focus on Efficient Vineyard SCRI project, Variable Rate Management, Cover Crops, NEWA, GBM and Business Education. *\$20.00 per person includes program, morning refreshments and a catered lunch. For more information, please call Katie 716-792-2800. Register at <https://lergp.cce.cornell.com>*

LAKE ERIE REGIONAL GRAPE PROGRAM- 25 Year Anniversary

2017 GRAPE GROWERS' SUMMER CONFERENCE REGISTRATION FORM

to be held at CLEREL

on Friday, August 11, 2017

Deadline for registration is Friday, August 4, 2017

Name (1st attendee) _____ \$ _____

Farm Name _____

Address, City, State, Zip Code _____

Phone _____ E-mail _____

Are you enrolled in Lake Erie Regional Grape Program (LERGP)? Yes _____ No _____

REGISTRATION FEES

LERGP Member attendee	\$ 20.00
Non- member	\$100.00

Additional Attendees:

	\$20.00
	\$20.00
	\$20.00
	\$20.00
	\$20.00

*Please add a **\$20.00 late fee** for each reservation made after August 4, 2017

TOTAL \$ _____

Please make check payable to **LERGP (Lake Erie Regional Grape Program)** and mail to: Kate Robinson
(US funds only) LERGP
6592 W Main Rd
Portland NY 14769

Name _____ NY DEC/PA PDA NUMBER _____

Name _____ NY DEC/PA PDA NUMBER _____

Name _____ NY DEC/PA PDA NUMBER _____

<u>Date Ck. Rec'd</u>	<u>Amount</u>

Call Kate at 716-792-2800 ext 202 with any questions.

2017

LERGP Hops Production in the Lake Erie Region Conference

Saturday, August 19, 2017

CLEREL-6592 West Main Rd. Portland, NY 14769

9:00am-4:00pm



\$50.00- includes program, morning refreshments and a catered lunch

Join us for a day of Hops talks and a harvester/harvesting demonstration, followed by tours of the hopyards with time for open discussion.

Questions?: call Katie 716-792-2800

Register on-line at: <https://lergp.cce.cornell.edu>

You can print a hard copy registration from this link and mail it in or use a credit card to register on-line.





Hops Production in the Lake Erie Region
Saturday, August 19, 2017
CLEREL
6592 West Main Rd
Portland NY 14769
9:00am-4:00pm



Grower Registration Fee- \$50.00- includes, program, morning refreshments and catered lunch

Please provide the following information:

Farm Name: _____

Name: _____

Mailing Address: _____

City, State, Zip Code: _____

E-mail: _____ Telephone: _____

Names of additional attendees:

_____	\$50.00
_____	\$50.00
_____	\$50.00

Total: _____

Payment type: _____

Received: _____

Questions? 716-792-2800

Please send to:
Attn: Kate Robinson
Lake Erie Regional Grape Program
6592 West Main Rd.
Portland, NY 14769



The Only FRAC Group U6 Fungicide

Labeled for Grapes & Cucurbits

Highly Effective on Powdery Mildew

No Cross-Resistance

Protectant / Preventative Action



FRAC Group 3

Labeled for Grapes

Controls Powdery Mildew & Black Rot

Protectant + Curative Activity

Highly Systemic

Badge[®] SC

Badge[®] X₂



High Quality Copper
Excellent Mixing Characteristics
Highly Active at Lower Rates
Enhanced Crop Safety

NeXter[®]

Miticide/Insecticide

Mite control on Grapes
Knockdown and Residual

Dave Pieczarka
315.447.0560



Torino[®] is a registered trademark of Nippon Soda Company, LTD. EPA Reg No 8033-103-10163. Mettler[®] SC, Badge[®] X₂ are registered trademarks of Isagro USA. Mettler EPA Reg No 80289-8-10163. Badge SC EPA Reg No 80289-3-10163. Badge X₂ EPA Reg No 80289-12-10163. NeXter is a trademark of Nissan Chemical Industries. EPA Reg No 81880-4-10163. Always read and follow label directions.

Clover Hill Sales^{LLC}

10401 Sidehill Road, North East, PA 16428

814-725-3102

cloverhill@roadrunner.com

www.cloverhillsales.com



Harvester Parts and Belting
Southern Yellow Pine Posts
And So Much More!

Rev. 02/17_BP&Ink

LANDPRO[®]

EQUIPMENT

Formerly

Z&M Ag and Turf and Lakeland Equipment

Alexander • Avon • Brockport • Chili
Clymer • Edinboro, Pa • Falconer • Hall
Macedon • Oakfield • Savannah • Springville

WWW.LANDPROEQUIPMENT.COM



Helping farmers to protect their revenue and preserve their equity.

I will show you how crop insurance is a vital part of your overall risk management plan. Utilizing the policy that works best for your unique situation, you can take less risk and enjoy a better quality of life.

Mark C. Muir Agency
Mark C. Muir

Serving clients in NY, OH, and PA
10509 Route 6 • Union City, PA 16438-9707
Phone: (814) 397-0033

DCIS - Toll Free: (866) 669-3429 • Email: info@diversifiedcropinsurance.com | Diversified Crop Insurance Services is a company of CIB Enterprises, Inc. and is an Equal Opportunity Provider. 02/16 230416

LaPorte

Farm Equipment

"Large and small, we sell them all"

Sales - Parts - Service
Westfield NY (716) 326-4671

CASE IH

AGRICULTURE

www.laportefarmequipment.com

Custom Built 2 Tank Weed Sprayer



We sell and service CaseIH tractors, Oxbo Harvesters, and Turbomist sprayers. We also custom manufacture single and dual tank sprayers, pre-pruners, brush sweepers, wire winders.



WOODS NO TILL VINEYARD DRILL

Available for Rent

Contact Mike @ Larry Romance & Son

716-679-3366

Tractorsales@netsync.net

NORTH EAST FRUIT GROWERS, INC.

2297 KLOMP ROAD, NORTH EAST, PA 16428

SPECIALIZING IN RETAIL:

SPRAY MATERIALS
FERTILIZER (BAG & BULK)
VINEYARD & ORCHARD SUPPLIES
PRUNING SUPPLIES
PACKAGING FOR FRUIT & VEGETABLES
SPRAYER PARTS
TANKS, PUMPS, HOSE
GLOVES, RAIN GEAR, FOOTWEAR
SAFETY MATERIALS
GRAPE POSTS
WIRE / TIE TWINE
DRAIN TILE
SEED & MORE

COME BY OR GIVE US A CALL

(814) 725-3705

HOURS OF OPERATION:

MONDAY - FRIDAY 8:00AM - 5:00PM
SATURDAY 8:00AM - NOON



LERGP Links of Interest:

Go to <http://lergp.cce.cornell.edu/> for a detailed calendar of events, registration, membership, and to view past and current Crop Updates and Newsletters.

LERGP Web-site:

<http://lergp.com/>

Cornell Lake Erie Research & Extension Laboratory Facebook page

<https://www.facebook.com/Cornell-Lake-Erie-Research-and-Extension-Laboratory-678754995584587/?fref=ts>

Efficient Vineyard Web-site:

<https://www.efficientvineyard.com/>

Table for: Insecticides for use in NY and PA:

<http://lergp.cce.cornell.edu/submission.php?id=69&crumb=ipm|ipm>

Crop Estimation and Thinning Table:

http://nygpadmin.cce.cornell.edu/pdf/submission/pdf65_pdf.pdf

Appellation Cornell Newsletter Index:

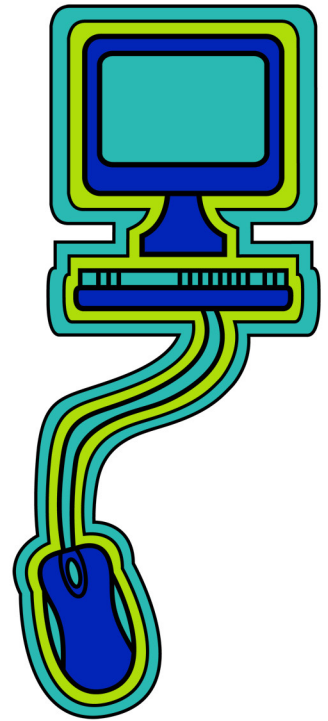
<http://grapesandwine.cals.cornell.edu/cals/grapesandwine/appellation-cornell/>

Veraison to Harvest newsletters:

<http://grapesandwine.cals.cornell.edu/cals/grapesandwine/veraison-to-harvest/index.cfm>

NEWA:

<http://newa.cornell.edu/>





Lake Erie Regional Grape Program Team Members:

Andy Muza, (ajm4@psu.edu) Extension Educator, Erie County, PA Extension, 814.825.0900

Tim Weigle, (thw4@cornell.edu) Grape IPM Extension Associate, NYSIPM, 716.792.2800 ext. 203

Kevin Martin, (kmm52@psu.edu) Business Management Educator, 716. 792.2800 ext. 205

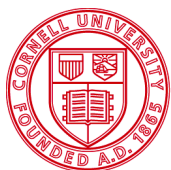
This publication may contain pesticide recommendations. Changes in pesticide regulations occur constantly, and human errors are still possible. Some materials mentioned may not be registered in all states, may no longer be available, and some uses may no longer be legal. Questions concerning the legality and/or registration status for pesticide use should be directed to the appropriate extension agent or state regulatory agency. Read the label before applying any pesticide. Cornell and Penn State Cooperative Extensions, and their employees, assume no liability for the effectiveness or results of any chemicals for pesticide usage. No endorsements of products are made or implied.

Cornell University Cooperative Extension provides equal program and employment opportunities.

Contact the Lake Erie Regional Grape Program if you have any special needs such as visual, hearing or mobility impairments.

CCE does not endorse or recommend any specific product or service.

THE LAKE ERIE REGIONAL GRAPE PROGRAM at CLEREL
6592 West Main Road
Portland, NY 14769
716-792-2800



Cornell University
Cooperative Extension



College of
Agricultural
Sciences