



# The Lake Erie Regional Grape Program



*Crop Update June 22, 2017*



## **Building Strong and Vibrant New York Communities**

Diversity and Inclusion are a part of Cornell University's heritage. We are a recognized employer and educator valuing AA/EEO, Protected Veterans, and Individuals with Disabilities.

## Dates of interest:



**Wednesday, June 28- Coffee Pot-**

*10:00am- Peter Loretto Farm, 10854 Versailles Plank Rd. North Collins, NY 14111*

*3:00pm- David Nichols Farm, 1906 Ridge Rd. Perrysburg, NY 14092*

*\*\*see the full schedule located in this Crop Update.\*\**



**Monday, July 10- Grape Market Order Public Hearing, CLEREL,**  
*6:00pm-8:00pm*

**Tuesday, July 11- Grape Market Order Public Hearing, CLEREL,**  
*10:00am-12:00pm*



**Wednesday, August 2, 2017- LERGP Twilight Meeting, Gravel Pit Park,**  
*10300 W Main St. North East, PA 16428*



**Friday, August 11- LERGP Summer Grower Conference- come join us in celebrating 25 years of service! See registration information at end of this Crop Update!**



**Saturday, August 12- LERGP Open House- We would like to invite our neighbors to see what it is that we do here at CLEREL.**



**Saturday, August 19- LERGP Hops Production in the Lake Erie Region Conference- see registration information at the end of this Crop Update**



# Business Management

Kevin Martin, Penn State University, LERGP, Business Management Educator

## Economic Losses of Insecticide Damage

Most growers probably have not needed an insecticide this year. Some pests may justify early season insecticides and cause significant harm in isolated areas. For the most part, concord growers should be most concerned about 1. Grape Berry Moth and 2. Grape Root Worm.

As Tim's crop update will likely mention, Grape Root Worm began emerging this week. Now would be a good time to add an insecticide like Admire Pro (or a generic version). Admire Pro is the cheapest or nearly cheapest option available, does not target Grape Berry Moth (no reason to save it) and worked very well in research trials.

We are probably about two weeks away from a Grape Berry Moth insecticide application. I'm not sure if you've heard, but GBM has been around for a couple of years now. While there is a wide discrepancy in the cost of GBM insecticides, what works best for you might depend on what you've used (or over-used) in the past. If you have blocks with both pests, be sure to scout for both pests toward the end of June or in early July. Typically a single application of Admire Pro will take care of root worm. If you selected an insecticide that does not provide 14 day control, or you find that your vineyard has an unusually long period of emergence, your GBM insecticide may need to target Grape Root Worm.

Leverage 360 is the best dual use product for this situation. At \$15 - \$18 per acre it remains both affordable and a sound investment. If you have a raging case of berry moth, you may find Leverage 360 is like bringing a Corvette to a Nascar race. It's not that you don't have a quality material, it's just that you need something even better. With Belt now off the market, Intrepid (PA) and Altacor are the go to choices. That 2<sup>nd</sup> generation spray in early July is the time to spend \$25 - \$35 per acre when scouting reveals more than 12% of clusters are damaged.

For the very worst cases of Grape Berry Moth, the most extension has recommended spending on material is \$82 per acre over four applications. This is an unusual recommendation that took barrier rows from 100% of cluster damage down to a level that can be harvested and delivered. While growers are reluctant to invest \$82 in materials and \$180 in total cost, it does offer an opportunity to salvage a crop that may be worth \$1,200 - \$2,400 per acre.

As a reminder, the economic threshold for GBM apply to Concords. The threshold may also apply to early season Niagara. Later harvests of Niagara, particularly when brix reach 15 - 16, require a more intensive spray program. Processors will be paying a premium for higher brix. That premium, when GBM is present, needs to be spent on GBM control. At damage levels of 7%, inexpensive materials should be avoided. When the model indicates a high likelihood of a 4<sup>th</sup> generation of berry moth before Niagara harvest, research trials indicated losses always exceeded the cost of 4 insecticide applications.

# IPM

Tim Weigle, NYSIPM, Cornell University, LERGP Team Leader

## Grape Rootworm

As part of a grape rootworm project funded by the Lake Erie Processor Group (Constellation Brands, National Grape Cooperative and Walkers Fruit Basket) and the New York Wine and Grape Foundation, a crew from the Lake Erie Regional Grape Program conducts weekly scouting in 7 vineyard blocks with a history of grape rootworm. We completed the third week of scouting this past Tuesday and the crew found adult grape rootworm in 3 of the 7 vineyard blocks.

As a part of the project we are trying to develop a growing degree day (DD) model that will tell us when to expect first emergence and peak emergence to give us a better idea of when to scout and apply management strategies against this reemerging pest. Growing degree days recorded by the station at Portland on June 20, 2017 are 766 DD (January 1 start date) and 741 (April 1 start date). This is only the third year we have been collecting this information so we do expect to have a lot of spread in degree days. You can see how this year's DD's compares to the first two years of the project.



*Adult Grape Rootworm*

**Table 1. Comparison of grape rootworm adult emergence by date and growing degree day for the 2015 and 2016 growing seasons using the Portland NY (CLEREL) NEWA station.**

Emergence	Date 2015	Date 2016	January DD		April DD	
			2015	2016	2015	2016
First	June 10	June 21	642	761	642	714.5
Peak	June 17	June 21	784.5	761	784.5	714.5
Last	August 8	July 6	1778.5	1073.5	1778.5	1027

If you have blocks with a history of grape rootworm, or blocks where you just feel the vine vigor has decreased for an unexplained reason, I would encourage you to get out and scout to see if you can find leaf feeding from grape rootworm. Leaf feeding by the adult rootworm does little damage, the larvae feeding on the grape roots is what leads to vine decline, but it is the most noticeable damage and the adults are the stage most susceptible to control measures.

More information on the grape rootworm life cycle and photos of leaf feeding can be found in the NYS IPM Program fact sheet at: <http://lergp.com/ipm/>. At the top of this page you will also find the FIFRA 2(ee) recommendations for Admire Pro, Danitol, Leverage 360 and Sniper. These are materials that have been added to the arsenal against grape rootworm through a cooperative effort between Greg Loeb, Department of Entomology, Cornell University, myself and the funding partners mentioned above. If you use these materials you will need a copy of the FIFRA 2(ee) recommendation with you during the time of application.



# PA Update

Andy Muza, Extension Educator, Penn State

## Diseases

Downy Mildew – downy mildew was found on Tuesday for the first time this season. A leaf lesion was found in a Delaware block and an infected cluster in a Fredonia block (Figure 1). No downy mildew was found, yet, in any of the Concord blocks checked. Bryan Hed reported finding DM in a Chardonnay block about 2 weeks ago. Although only small amounts of DM have been found so far, this indicates that this disease is around and growers should be looking for it while scouting. The greatest risk for problems developing are in shaded areas near wood lines, low lying areas and blocks with susceptible varieties (e.g., Niagara, Fredonia, Delaware, and certain wine grape varieties). Consult the **2017 New York and Pennsylvania Pest Management Guidelines for Grape** for a list of susceptible varieties.

Fortunately, inoculum levels are low going into this season, so I don't expect DM to be a problem unless a pattern of rainy weather develops (e.g., frequent thunderstorms).



*Downy Mildew on Fredonia Cluster.*

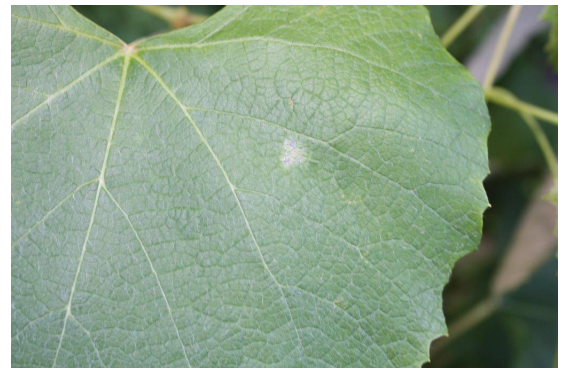


*Black Rot lesions on Concord leaf.*

Black Rot – black rot lesions were observed on Concord leaves at a few more sites this week (Figure 2). No BR was found on any clusters. However, be aware that Concord can be infected up to about 5 - 6 weeks after bloom and *Vinifera* varieties as late as 7 weeks postbloom.

Powdery Mildew – powdery mildew lesions were also observed on Concord leaves at a few more sites checked this week (Figure 3). Keeping this disease under control is crucial at this time of the season to prevent berry infections and to avoid an early buildup

of inoculum to limit leaf infections throughout the remainder of the season.



*Powdery Mildew lesion on Concord leaf*

## Insects

Grape Berry Moth – webbing in Concord clusters from first



*Webbing from GBM larva in Concord*

generation GBM larvae was found at sites near wood lines (Figure 4). Although we are a few weeks away from when an insecticide application may be needed according to the GBM Degree Day Model, start checking NEWA <http://newa.cornell.edu/index.php?page=berry-moth> to track GBM degree days at your site.

# North East PA Update

Bryan Hed, Research Technologist, Lake Erie Grape Research and Extension Center

Weather: Recent storms this week have moved our rainfall total to 2.14" for the month of June. We have accumulated about 382 growing degree days during the first 3 weeks of June. We now have 766 gdds as of April 1. There is rain in the forecast for today, Friday and Sunday, with temperatures staying somewhat below average through early next week.

Phenology: The heat last week moved Concord and Niagara through bloom rather quickly and we are in the midst of that period of early berry development when fruit are most susceptible to all major fungal grape diseases.

Diseases: Rain this week generated infection periods for all major diseases and it is imperative that growers protect their crop with well-timed pre and post bloom fungicide applications. We aren't seeing lots of disease yet but the crop is very vulnerable at this time; do not stretch the interval between the immediate pre-bloom and first post bloom spray beyond 14 days (less is better). You're probably tired of hearing this, but this is a no brainer; use best materials you can afford, spray every row, bump up gallonage to maximize coverage, etc. After the first post bloom spray, reassess your situation by scouting, the weather forecast, and how well you were able to get sprays on up to that point. Downy mildew infections that slipped through your spray program with the rain earlier this week will become manifest by the weekend to early next week. Black rot takes a bit longer to show up and should be observable by late next week into early July. The low levels of overwintering inoculum will work in our favor and I don't anticipate major problems developing in vineyards this early on. But, stay vigilant if conditions remain wet. Niagara will remain susceptible to fruit loss from downy mildew for about a month after bloom, and both Concord and Niagara fruit can get hit with black rot for about 4-6 weeks after bloom. Do a good job controlling these diseases through this early fruit development period and we may be able to ease up on the fungicide applications if conditions dry out.



**Bassett Healthcare Network**  
New York Center for Agricultural  
Medicine and Health

The New York Center for Agricultural Medicine and Health (NYCAMH) is pleased to provide a respiratory fit testing clinic at the Cornell Cooperative Extension Lake Erie Regional Grape Program Office in Portland, NY from Monday, June 26-Wednesday, June 28. The clinic is by appointment only.

### **Scheduling appointments**

If you would like to schedule appointment(s) for you and/or your employees, or for more information, please call NYCAMH at (800)343-7527. We can accommodate both English and Spanish speakers. Scheduling will be on a first-come, first-served basis. Don't worry though, since the clinic will span three days, we will be able to test many people. When you schedule your appointment, you will need to have the following information available:

- How many people will be fit tested?
- Number of Spanish speakers
- Brand and model of all masks you are using
- If you would like to purchase masks from NYCAMH

### **After you are scheduled**

You will be sent a follow up letter and a request for a non-refundable \$25 deposit for each person that you schedule. This deposit will be applied toward the \$25 medical evaluation, and there will be no additional charges. Walks-ins may or may not be accommodated depending on the schedule. The fee is \$35 for walk-ins.

We can only fit test clean-shaven faces. No stubble, no exceptions.

If you cannot make the Lake Erie Regional clinic, we can place you on our waitlist and contact you again when future clinics are scheduled for your region.

Best regards,  
Melissa Horsman  
Project Coordinator

### **NYCAMH**

One Atwell Road · Cooperstown, New York 13326

**Ph** (607) 547-6023/(800) 343-7527 • **Fax** (607) 547-6087 • **Web** [www.nycamh.org](http://www.nycamh.org)

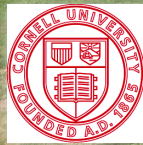
*A program of Bassett Healthcare Network*





# Lake Erie Regional Grape Program

## Open House



Cornell University  
Cooperative Extension

Welcomes our neighbors, near and far, to come celebrate 25 years of service with us. We are holding an Open House with hayrides through the vineyards, food and a chance for us to let people know what we do here. This is a FREE event!

- **When: Saturday, August 12, 2017**
- **Time: 10:00am - 1:00pm (hayrides on the half hour)**
- **Where: CLEREL (Cornell Lake Erie Research & Extension Laboratory)**  
6592 West Main Rd.  
Portland, NY 14769

Questions? Call Katie at 716-792-2800



## 2017 eNEWA Grape Project Subscription Sign-Up

### **Subscriber information**

Name \_\_\_\_\_

Email address \_\_\_\_\_

City \_\_\_\_\_

**Select Location(s)** (circle as many as you like, or write in below)

---

#### **Lake Erie Region**

**Appleton, North**

**Appleton, South**

**Dunkirk**

**Erie**

**Harborcreek**

**North East Escarpment**

**North East Lab**

**Portland**

**Portland Escarpment**

**Portland Route 5**

**Ransomville**

**Ripley**

**Sheridan**

**Silver Creek**

**Versailles**

#### **Finger Lakes Region**

**Aurora**

**Branchport**

**Dresden (FLGP/FLCC)**

**Dundee (Weimer)**

**Fayette 3 Brothers**

**Geneva**

**Geneva (Bejo)**

**Hector**

**Interlaken (Airy Acres)**

**Lakemont**

**Lansing**

**Lodi (Lamoreaux)**

**Lodi (Shalestone)**

**Lodi (Standing Stone)**

**Penn Yan**

**Romulus (B. wood Grove)**

**Romulus (Thirsty Owl)**

**Varick (Swedish Hill)**

**Watkins Glen**

**Watkins Glen (Lakewood)**

**Select eNEWA Delivery Times** (write in times below) Delivery requests should be on the hour.

\_\_\_\_\_

Mail to: Tim Weigle, CLEREL, 6592 West Main Road, Portland, NY or scan and email to [thw4@cornell.edu](mailto:thw4@cornell.edu)

# Make Sure You Are Counted In The Census of Agriculture

Currently, the census is the only complete count of U.S. farms and ranches and the people who operate them. It includes even the smallest plots of land – rural or urban – growing fruits, vegetables, or raising food animals, if \$1,000 or more of such products were raised and sold, or normally would have been sold, during the census year. The information produced by the Census of Agriculture guides Congress, agribusiness, policymakers, researchers, local governments and many others on the creation and funding of agricultural programs and services – decisions that can directly impact your local operations and the future of the agriculture industry for years to come.

**Please note that new farmers or existing farmers who have not participated in a prior Census of Agriculture still have time to sign up to be counted through the end of June at <https://www.agcounts.usda.gov/cgi-bin/counts/>.** The survey takes less than a minute – and will ensure that you receive a Census form (that you can fill out in paper form or online.) If a farmer/rancher is not on our list frame by June 30<sup>th</sup>, 2017, the producer will not have an opportunity to participate in the 2017 Census of Agriculture.

For more information about the census, please visit [www.agcensus.usda.gov](http://www.agcensus.usda.gov), follow NASS on Twitter @usda\_nass, or call [\(800\) 727-9540](tel:8007279540).

This is a list for organizations that provide services to beginning farmers in the Northeastern US.

To unsubscribe from this list, send a plain text email message to [blearningnetwork-L-request@cornell.edu](mailto:blearningnetwork-L-request@cornell.edu) with the word “leave” in the body of the message.

To join the list, follow the above instructions but type «join» in the message body.



**THE 2017 CENSUS OF AGRICULTURE IS COMING!**

Make sure you are counted.  
Sign up at [www.agcensus.usda.gov](http://www.agcensus.usda.gov).

# CENSUS OF AGRICULTURE

YOUR VOICE. YOUR FUTURE. YOUR OPPORTUNITY.



2017 CENSUS OF  
AGRICULTURE

U.S. Department of Agriculture  
National Agricultural Statistics Service





# INSURING GRAPES

NY, 2017

Crop insurance is a safety net for farmers that helps you **manage risk**. If you have a crop failure, crop insurance can help you farm again next year.

## Important Insurance Deadlines

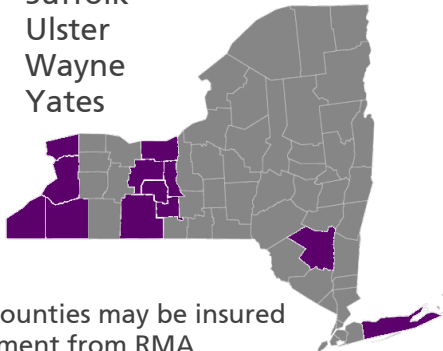
- **Aug. 15, 2017:** Premium Billing Date
- **Nov. 20, 2017:** Sales Closing, Policy Change, Cancellation, Termination Date
- **Nov. 20, 2017:** End of Insurance Period
- **Jan. 15, 2018:** Acreage / Production Report Date



## Over 40 grape varieties are insurable in these counties:

Cattaraugus  
Chautauqua  
Erie  
Niagara  
Ontario  
Schuyler  
Seneca  
Steuben

Suffolk  
Ulster  
Wayne  
Yates



Grapes in other counties may be insured by written agreement from RMA

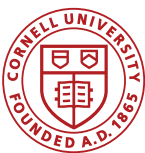
## NYS Grape Crop Insurance Performance



**for every \$1** grape producers spent on crop insurance premiums from 2012 to 2016, **they received \$2.07** in losses paid, on average

## Learn more & sign up:

Explore your personalized crop insurance costs and loss payments under different yield outcomes at [ag-analytics.org](http://ag-analytics.org). To sign up, contact a crop insurance agent. Find an agent using the Agent Locator tool at [rma.usda.gov/tools/agent.html](http://rma.usda.gov/tools/agent.html)





# LERGP

## 2017 COFFEE POT MEETING SCHEDULE

Date	Time	Location	Address
May 3, 2017	10:00am	John Mason Farm	8603 West Lake Rd. Lake City, PA 16423
May 10, 2017	10:00am	CLEREL	6592 West Main Rd. Portland, NY 14769
May 17, 2017	10:00am	Brant Town Hall	1272 Brant Rd. Brant, NY 14027
May 24, 2017	10:00am	Peter Smith Farm	4472 Van Dusen Rd. Lockport, NY 14094
May 31, 2017	10:00am	Dan Sprague Farm	12435 Versailles Rd. Irving, NY 14081
June 7, 2017	10:00am	Betts' Farm	7365 East Route 20 Westfield, NY 14787
June 7, 2017	3:00pm	Archer Pratz Farm	9318 Lake Rd. North East, PA. 16428
June 14, 2017	10:00am	Jeff Schultz Farm	2707 Albright Rd. Ransomville NY 14131
June 14, 2017	3:00pm	Orton Farm	10646 West Main St. Ripley, NY 14775
June 21, 2017	10:00am	North East Fruit Growers	2297 Klomp Rd. North East, PA 16428
June 21, 2017	3:00pm	Kirk Hutchinson Farm	4720 West Main St. Fredonia, NY 14063
June 28, 2017	10:00am	Peter Loretto Farm	10854 Versailles Plank Rd. North Collins, NY 14111
June 28, 2017	3:00pm	David Nichols Farm	1906 Ridge Rd. Lewiston, NY 14092
July 5, 2017	10:00am	Leo Hans Farm	10929 West Perrysburg Rd. Perrysburg, NY 14129
July 12, 2017	10:00am	Szklenski Farms	8601 Slade Rd. Harbor Creek, PA 16421
July 19, 2017	10:00am	Liberty Winery	2861 Route 20, Sheridan, NY 14135





# 2017 LERGP Summer Grape Growers' Conference



Friday August 11, 2017  
at CLEREL  
6592 W. Main Rd.  
Portland NY 14769  
9:00am-4:00pm



Summer Grape Grower Conference with a focus on Efficient Vineyard SCRI project, Variable Rate Management, Cover Crops, NEWA, GBM and Business Education. *\$20.00 per person includes program, morning refreshments and a catered lunch. For more information, please call Katie 716-792-2800. Register at <https://lergp.cce.cornell.com>*

# LAKE ERIE REGIONAL GRAPE PROGRAM- 25 Year Anniversary

## 2017 GRAPE GROWERS' SUMMER CONFERENCE REGISTRATION FORM

to be held at CLEREL

on Friday, August 11, 2017

**Deadline for registration is Friday, August 4, 2017**

Name (1<sup>st</sup> attendee) \_\_\_\_\_ \$ \_\_\_\_\_

Farm Name \_\_\_\_\_

Address, City, State, Zip Code \_\_\_\_\_

\_\_\_\_\_

Phone \_\_\_\_\_ E-mail \_\_\_\_\_

Are you enrolled in Lake Erie Regional Grape Program (LERGP)? Yes \_\_\_\_\_ No \_\_\_\_\_

### REGISTRATION FEES

LERGP Member attendee	\$ 20.00
Non- member	\$100.00

### Additional Attendees:

	\$20.00
	\$20.00
	\$20.00
	\$20.00
	\$20.00

\*Please add a **\$20.00 late fee** for each reservation made after August 4, 2017

**TOTAL \$** \_\_\_\_\_

Please make check payable to **LERGP (Lake Erie Regional Grape Program)** and mail to: Kate Robinson  
(US funds only) LERGP  
6592 W Main Rd  
Portland NY 14769

Name \_\_\_\_\_ NY DEC/PA PDA NUMBER \_\_\_\_\_

Name \_\_\_\_\_ NY DEC/PA PDA NUMBER \_\_\_\_\_

Name \_\_\_\_\_ NY DEC/PA PDA NUMBER \_\_\_\_\_

<u>Date Ck. Rec'd</u>	<u>Amount</u>

Call Kate at 716-792-2800 ext 202 with any questions.



2017

# LERGP Hops Production in the Lake Erie Region Conference

Saturday, August 19, 2017

CLEREL-6592 West Main Rd. Portland, NY 14769

9:00am-4:00pm



\$50.00- includes program, morning refreshments and a catered lunch

Join us for a day of Hops talks and a harvester/harvesting demonstration, followed by tours of the hopyards with time for open discussion.

Questions?: call Katie 716-792-2800

Register on-line at: <https://lergp.cce.cornell.edu>

You can print a hard copy registration from this link and mail it in or use a credit card to register on-line.







**Hops Production in the Lake Erie Region**  
**Saturday, August 19, 2017**  
**CLEREL**  
**6592 West Main Rd**  
**Portland NY 14769**  
**9:00am-4:00pm**



**Grower Registration Fee- \$50.00- includes, program, morning refreshments and catered lunch**

---

Please provide the following information:

Farm Name: \_\_\_\_\_

Name: \_\_\_\_\_

Mailing Address: \_\_\_\_\_

City, State, Zip Code: \_\_\_\_\_

E-mail: \_\_\_\_\_ Telephone: \_\_\_\_\_

---

**Names of additional attendees:**

_____	\$50.00
_____	\$50.00
_____	\$50.00

---

**Total:** \_\_\_\_\_

Payment type: \_\_\_\_\_

Received: \_\_\_\_\_

Questions? 716-792-2800

Please send to:  
Attn: Kate Robinson  
Lake Erie Regional Grape Program  
6592 West Main Rd.  
Portland, NY 14769



The Only FRAC Group U6 Fungicide

Labeled for Grapes & Cucurbits

Highly Effective on Powdery Mildew

No Cross-Resistance

Protectant / Preventative Action



FRAC Group 3

Labeled for Grapes

Controls Powdery Mildew & Black Rot

Protectant + Curative Activity

Highly Systemic

# Badge<sup>®</sup> SC

# Badge<sup>®</sup> X<sub>2</sub>



High Quality Copper  
Excellent Mixing Characteristics  
Highly Active at Lower Rates  
Enhanced Crop Safety

# NeXter<sup>®</sup>

Miticide/Insecticide

Mite control on Grapes  
Knockdown and Residual

Dave Pieczarka  
315.447.0560



Torino<sup>®</sup> is a registered trademark of Nippon Soda Company, LTD. EPA Reg No 8033-103-10163. Mettle<sup>®</sup> SC, Badge<sup>®</sup> SC, Badge<sup>®</sup> X<sub>2</sub> are registered trademarks of Isagro USA. Mettle EPA Reg No 80289-8-10163. Badge SC EPA Reg No 80289-3-10163. Badge X<sub>2</sub> 80289-12-10163. NeXter is a trademark of Nissan Chemical Industries. EPA Reg No 81880-4-10163. Always read and follow label directions

# Clover Hill Sales<sup>LLC</sup>

10401 Sidehill Road, North East, PA 16428

**814-725-3102**

cloverhill@roadrunner.com

**www.cloverhillsales.com**



Harvester Parts and Belting  
Southern Yellow Pine Posts  
And So Much More!

Rev. 02/17\_BP&Ink

# LANDPRO<sup>®</sup>

EQUIPMENT

Formerly

**Z&M Ag and Turf and Lakeland Equipment**

Alexander • Avon • Brockport • Chili  
Clymer • Edinboro, Pa • Falconer • Hall  
Macedon • Oakfield • Savannah • Springville

**WWW.LANDPROEQUIPMENT.COM**



**Helping farmers to protect their revenue and preserve their equity.**

I will show you how crop insurance is a vital part of your overall risk management plan. Utilizing the policy that works best for your unique situation, you can take less risk and enjoy a better quality of life.

**Mark C. Muir Agency**  
Mark C. Muir

Serving clients in NY, OH, and PA  
10509 Route 6 • Union City, PA 16438-9707  
Phone: (814) 397-0033

DCIS - Toll Free: (866) 669-3429 • Email: info@diversifiedcropinsurance.com | Diversified Crop Insurance Services is a company of CCB Enterprises, Inc. and is an Equal Opportunity Provider. 02/16 2/2016

# LaPorte

## Farm Equipment

"Large and small, we sell them all"

Sales - Parts - Service  
Westfield NY (716) 326-4671

# CASE IH

AGRICULTURE

[www.laportefarmequipment.com](http://www.laportefarmequipment.com)

### Custom Built 2 Tank Weed Sprayer



We sell and service Case IH tractors, Oxbo Harvesters, and Turbomist sprayers. We also custom manufacture single and dual tank sprayers, pre-pruners, brush sweepers, wire winders.



### WOODS NO TILL VINEYARD DRILL

Available for Rent

Contact Mike @ Larry Romance & Son

716-679-3366

[Tractorsales@netsync.net](mailto:Tractorsales@netsync.net)

## NORTH EAST FRUIT GROWERS, INC.

2297 KLOMP ROAD, NORTH EAST, PA 16428

### SPECIALIZING IN RETAIL:

SPRAY MATERIALS  
FERTILIZER (BAG & BULK)  
VINEYARD & ORCHARD SUPPLIES  
PRUNING SUPPLIES  
PACKAGING FOR FRUIT & VEGETABLES  
SPRAYER PARTS  
TANKS, PUMPS, HOSE  
GLOVES, RAIN GEAR, FOOTWEAR  
SAFETY MATERIALS  
GRAPE POSTS  
WIRE / TIE TWINE  
DRAIN TILE  
SEED & MORE

COME BY OR GIVE US A CALL

(814) 725-3705

### HOURS OF OPERATION:

MONDAY - FRIDAY 8:00AM - 5:00PM  
SATURDAY 8:00AM - NOON





## LERGP Links of Interest:

Go to <http://lergp.cce.cornell.edu/> for a detailed calendar of events, registration, membership, and to view past and current Crop Updates and Newsletters.

LERGP Web-site:

<http://lergp.com/>

Cornell Lake Erie Research & Extension Laboratory Facebook page

<https://www.facebook.com/Cornell-Lake-Erie-Research-and-Extension-Laboratory-678754995584587/?fref=ts>

Efficient Vineyard Web-site:

<https://www.efficientvineyard.com/>

Table for: Insecticides for use in NY and PA:

<http://lergp.cce.cornell.edu/submission.php?id=69&crumb=ipm|ipm>

Crop Estimation and Thinning Table:

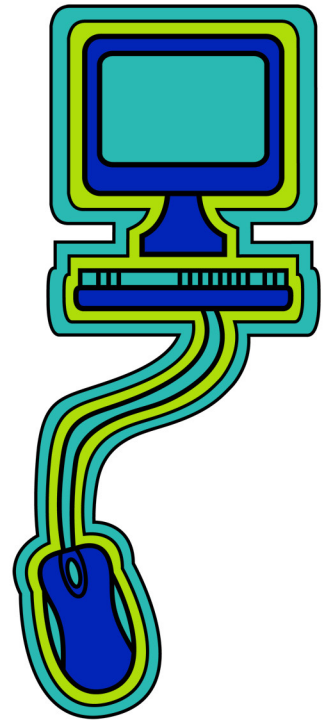
[http://nygpadmin.cce.cornell.edu/pdf/submission/pdf65\\_pdf.pdf](http://nygpadmin.cce.cornell.edu/pdf/submission/pdf65_pdf.pdf)

Appellation Cornell Newsletter Index:

<http://grapesandwine.cals.cornell.edu/cals/grapesandwine/appellation-cornell/>

Veraison to Harvest newsletters:

<http://grapesandwine.cals.cornell.edu/cals/grapesandwine/veraison-to-harvest/index.cfm>





**Lake Erie Regional Grape Program Team Members:**

Andy Muza, (ajm4@psu.edu) Extension Educator, Erie County, PA Extension, 814.825.0900

Tim Weigle, (thw4@cornell.edu) Grape IPM Extension Associate, NYSIPM, 716.792.2800 ext. 203

Kevin Martin, (kmm52@psu.edu) Business Management Educator, 716. 792.2800 ext. 205

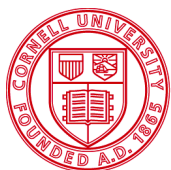
This publication may contain pesticide recommendations. Changes in pesticide regulations occur constantly, and human errors are still possible. Some materials mentioned may not be registered in all states, may no longer be available, and some uses may no longer be legal. Questions concerning the legality and/or registration status for pesticide use should be directed to the appropriate extension agent or state regulatory agency. Read the label before applying any pesticide. Cornell and Penn State Cooperative Extensions, and their employees, assume no liability for the effectiveness or results of any chemicals for pesticide usage. No endorsements of products are made or implied.

Cornell University Cooperative Extension provides equal program and employment opportunities.

Contact the Lake Erie Regional Grape Program if you have any special needs such as visual, hearing or mobility impairments.

CCE does not endorse or recommend any specific product or service.

THE LAKE ERIE REGIONAL GRAPE PROGRAM at CLEREL  
6592 West Main Road  
Portland, NY 14769  
716-792-2800



**Cornell University**  
Cooperative Extension



College of  
Agricultural  
Sciences