



Finger Lakes Grape Program

March 7, 2017

Finger Lakes Vineyard Update

Enrollment Reminder



Just one final reminder about enrolling in the FLGP for the upcoming growing season, if you haven't done so already. We will be deleting the mailing list from 2016 and creating the new one for 2017 enrollees in a couple of weeks, so be sure to enroll either online at <https://flgp.cce.cornell.edu/enrollment.php> or by sending in the enrollment form with your check (the form can be downloaded from the same link above). If you need a hard copy of the form mailed or faxed to you, or you want to check on the status of your enrollment, please call Brittany at (315) 536-5134 and she will help you out. Growers in Wayne County should contact the CCE office in Newark to enroll in the Finger Lakes Grape Program.

Warm Temperatures Causing Buds to Begin Deacclimation; Cold Temperatures Follow Closely Behind

The latest results from our bud hardiness survey are available at <https://grapesandwine.cals.cornell.edu/extension/bud-hardiness-data/2016-2017-data>. The next set of regional samples will be collected next Monday, March 13.

The up and down swings in temperature over the past couple of weeks certainly aren't ideal conditions for grapevines as they begin the deacclimation process. The warm temperatures two weeks ago (several of the NEWA stations in Finger Lakes vineyards recorded temperatures in the low to mid-70s on February 24), followed by lows in the single digits this past weekend, have a lot of growers, and not just in the Finger Lakes, wondering what this means for the vines' ability to avoid injury to buds or trunks.

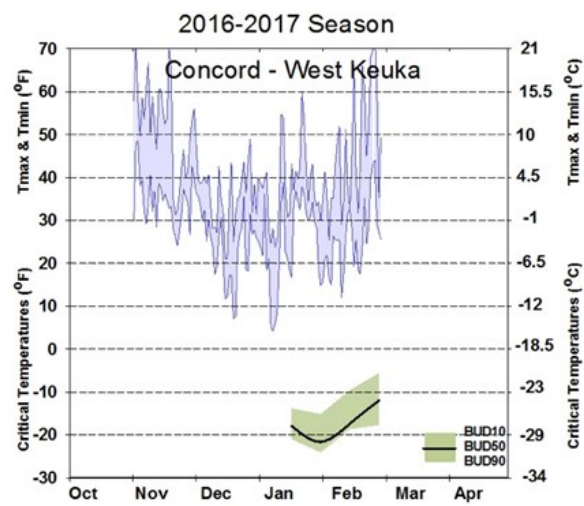
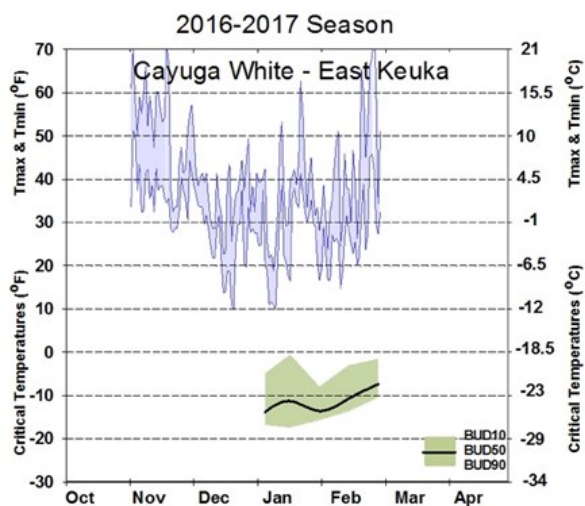
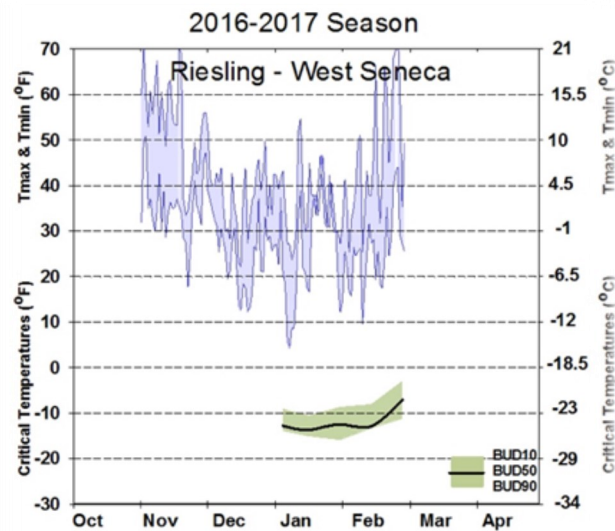
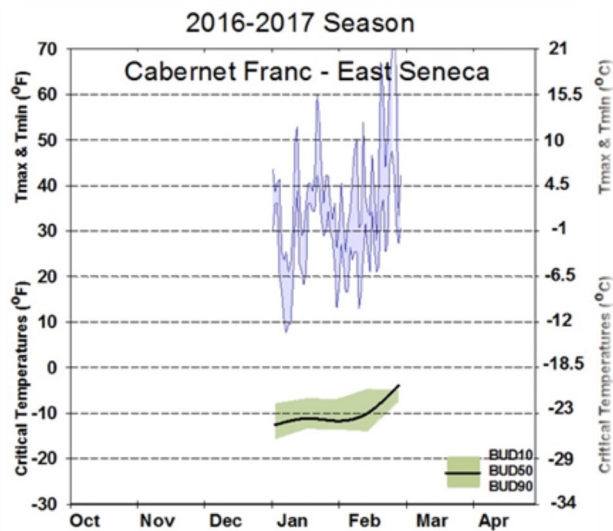
Let's start with the buds. [While our most recent samples \(collected on February 27\)](#) show that the buds have deacclimated to various degrees, the LT_{50} readings for all varieties in each of our sampling locations were still below 0°F. We had only one sample, Cab Franc from East Keuka, which even had a LT_{10} result (one bud out of 10 dead) above zero. So according to the test results from the lab, we would expect that the recent cooldown over the weekend didn't have much of an impact on the buds. We will be assessing bud injury later this month to see if the results from the lab are reflected in the field.

Finger Lakes Vineyard Update

Finger Lakes Grape Program

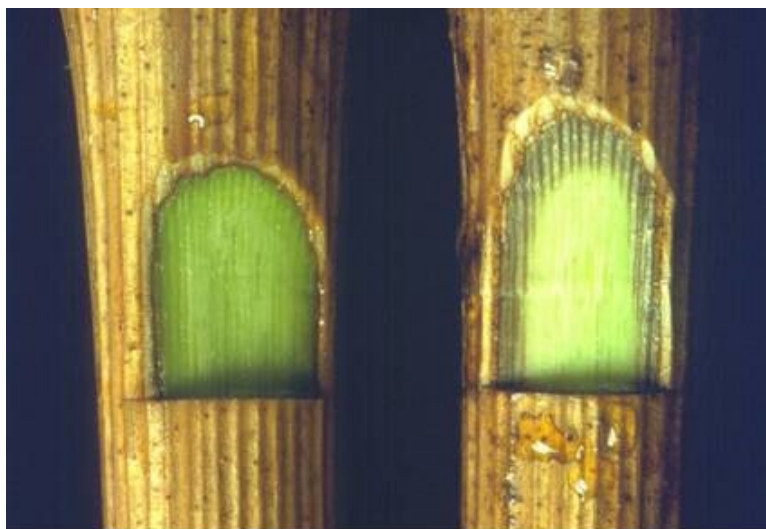
March 7, 2017

Warm Temperatures Causing Buds to Begin Deacclimation; Cold Temperatures Follow Closely Behind (continued from page 1)



Warm Temperatures Causing Buds to Begin Deacclimation; Cold Temperatures Follow Closely Behind (continued from page 1)

The question about injury to trunks, cordons and canes is a harder one to answer, unfortunately. The warm temperature a couple of weeks ago resulted in water being pushed into the vines and causing pruning cuts to bleed. The arrival of single digit temperatures raises the concern about trunks and other structures being injured. Vines have the ability to regulate the water content in and around their cells to prevent winter injury, but at some point the climatic conditions can overwhelm those protective mechanisms. The problem is that we just don't have a good way to predict or assess this other than checking lots of trunks for injury (see photo).



It looks like we're in for another fairly big temperature swing, as lows are forecast to fall to around 10°F on Friday night/Saturday morning after being fairly warm for a good portion of the week. Hang on to your hats kids – it might be a bit of a bumpy ride as we move into spring.

Normal cane (left) showing healthy phloem and xylem tissues subtending bark. Cane on right has been exposed to damaging cold and shows evidence of phloem tissue injury as discoloration beneath the brown bark. (Credit: Tony Wolf, Virginia Tech University)

Interested in Hosting a Tailgate Meeting in 2017?

Once the B.E.V. NY conference is over (and we've taken a deep breath) each year, we realize that the growing season will soon be upon us. Part of our planning every year includes scheduling our annual series of Tailgate Meetings at vineyards around the Finger Lakes. If you would be interested in hosting one of these meetings this year, we would love to hear from you. Meetings hosts

only need to provide a place for us to gather (with the option of space under a roof in case of bad weather). We'll bring water, pesticide credits, and a few topics to kick off the discussion.



We would especially like to hold meetings at farms where we have not had one before, so we would like to hear from those growers in particular if they are interested. We spread these meetings out between all six of the counties that participate in the Finger Lakes Grape Program, in an effort to help us get around to see growers in as many different parts of the region as we can.

If you are interested in hosting a Tailgate Meeting this year, whether you have hosted one in the past or not, please get in touch with Brittany Griffin at bq393@cornell.edu or 315-536-5134 and let her know. We will be putting the schedule together in a couple of weeks.

As part of our survey about the Tailgate Meetings this winter, we asked for volunteers to host a meeting this year and several people said they were interested. Unfortunately, nobody included their contact information so we have no idea who any of you were, so please tell us again.

Upcoming Events

Don't forget to check out the calendar on our website (<http://flgp.cce.cornell.edu/events.php>) for more information about these and other events relevant to the Finger Lakes grape industry.



Pruning Workshop

Friday, March 10 1:00 – 4:00 PM
Finger Lakes Teaching & Demonstration Vineyard
1020 Anthony Road
Penn Yan, NY 14527

Interested in learning how to prune grapevines? You won't want to miss the Finger Lakes Grape Program's pruning class and hands-on demonstration.

There will be a brief indoor session in which we'll introduce proper techniques and answer any questions you may have, followed by ample time outside in our Teaching and Demonstration Vineyard to practice what you've learned. All attendees will have the opportunity to prune vines on two different training systems with guidance from Cooperative Extension educators.

Instruction is available in Spanish for portions of the workshop.

Registration is available at https://flgp.cce.cornell.edu/event_preregistration.php?event=290 or by calling our office at (315) 536-5134. Registration cost is \$25 per person in advance, or \$40 per person the day of the workshop. Please remember to dress for the weather, and bring your own pruning shears.

Questions? Email Gillian Trimber at gmt47@cornell.edu, or call the Finger Lakes Grape Program office at (315) 536-5134

Effective Vineyard Spraying Workshop

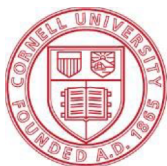
Tuesday, March 14 9:00 AM – 3:15 PM
Jordan Hall
NYS Agriculture Experiment Station
630 W North Street, Geneva NY

Dr. Andrew Landers will present another full day course on 'Effective Vineyard Spraying' on Tuesday, March 14 at the New York State Agricultural Experiment Station in Geneva, beginning at 9:00 AM. By the end of this course, growers will understand how to improve their timeliness and therefore apply sprays when needed and not be forever chasing the calendar. Correct application at the correct time will allow growers to make better use of their spray over the season.

Registration cost is \$20 for those enrolled in the FLGP, and \$35 for those not enrolled in the program, and includes workshop materials, lunch and all breaks. Please contact Brittany Griffin (bg393@cornell.edu or 315-536-5134) if you need to check on your enrollment status for 2017. **Registration cost at the door will be \$50 regardless of enrollment status, and the number of same-day registrations will be limited.**

Registration link: https://flgp.cce.cornell.edu/event_preregistration.php?event=291

5.5 pesticide recertification credits will be available for attending this workshop.



Cornell University
Cooperative Extension
Finger Lakes Grape Program

*A Regional Extension Program of
Ontario, Schuyler, Seneca,
Steuben, Wayne, and Yates
Counties*

Finger Lakes Grape Program 2017 Enrollment Form

Contact Name: _____

Vineyard /Business Name: _____

Address: _____

Business Phone: _____ Cell: _____

Email 1: _____

Email 2: _____

You may list up to two email addresses

Select ALL the counties in which you have a vineyard or conduct business

- ☐ Ontario
- ☐ Schuyler
- ☐ Seneca
- ☐ Steuben
- ☐ Yates
- ☐ Out of Area

County

State

Will you be planting/replanting any vineyards in 2017 (circle one)?

Yes No

Growers in Wayne County NY should contact the CCE Association at (315)331-8415 for enrollment information.

	In-Region Enrollment <small>For those that live, farm or conduct vineyard services within the 6 counties supporting our program</small>	Out of Area Enrollment <small>For those that do NOT live, or conduct vineyard services within the 6-county region our program serves</small>	Enter Cost
Finger Lakes Grape Program Subscription	\$75.00	\$130.00	\$ _____
<input type="checkbox"/> Finger Lakes Vineyard Update – Free via email	N/C	N/C	\$ N/C
<input type="checkbox"/> Finger Lakes Vineyard Notes– Free with subscription via email	N/C	N/C	\$ N/C
<input type="checkbox"/> Finger Lakes Vineyard Notes (paper copy)	\$30.00	\$30.00	\$ _____
NY/PA Grape IPM Guidelines	\$33.00/copy	\$33.00/copy	\$ _____
<i>You can purchase online access to the Grape IPM Guidelines, with or without a print copy of the Guidelines. To purchase online access, contact the Cornell Bookstore at 607-255-4111 or visit http://store.cornell.edu.</i>			
Your Tax Deductible Contribution is Greatly Appreciated			
Finger Lakes Grape Program			\$ _____
Your County Extension Program			\$ _____
TOTAL (Payable in USD only. Make checks payable to: Finger Lakes Grape Program)			\$ _____

Return to: Finger Lakes Grape Program, 417 Liberty Street, Suite 1024, Penn Yan, NY 14527

For your convenience you may enroll at the Finger Lakes Grape Program website using a credit card.
<https://flgp.cce.cornell.edu/enrollment.php>

Additional Information



Become a fan of the [Finger Lakes Grape Program on Facebook](#), or follow us on [Twitter \(@cceflgp\)](#) as well as YouTube. Also check out our website at <http://flgp.cce.cornell.edu>.

Got some grapes to sell? Looking to buy some equipment or bulk wine? List your ad on the [NY Grape & Wine Classifieds website](#) today!

Cornell University Cooperative Extension provides equal program and employment opportunities. CCE does not endorse or recommend any specific product or service. This program is solely intended to educate consumers about their choices. Contact CCE if you have any special needs such as visual, hearing or mobility impairments.



FINGER LAKES VINEYARD UPDATE

Is published by

Cornell Cooperative Extension

Finger Lakes Grape Program

Ontario, Schuyler, Seneca, Steuben, Wayne and Yates Counties

417 Liberty Street, Penn Yan, NY 14527

315.536.5134