

LERGP Crop Update

July 28, 2016

Important dates:

Coffee Pot Meetings have concluded for the 2016 growing season. A special thank you goes out to all who have hosted this year. We look forward to a “fruitful” harvest season.

See the flyers for more information on the following events:

August 2, 2016- Wine Quality Workshop (rescheduled from April 13, 2016) at CLEREL**

August 3, 2016- Grape Twilight Meeting and Erie County Horticulture Society’s Annual Chicken BBQ**

August 11, 2016 Craft Beverage Summit at CLEREL

August 31, 2016- Cornell Vegetable Program Field Day at CLEREL

September 1, 2016- Cover Crop Conference at CLEREL

****Registration for the Wine Sanitation Workshop and the Gravel Pit Park BBQ have closed.****



Building Strong and Vibrant New York Communities

Diversity and Inclusion are a part of Cornell University's heritage. We are a recognized employer and educator valuing AA/EEO, Protected Veterans, and Individuals with Disabilities.



Cornell University
Cooperative Extension
Cornell Vegetable Program

Contact: Darcy Telenko, Regional Vegetable Specialist
Cornell Cooperative Extension- Cornell Vegetable Program
Phone: 716-652-5400 x178 (Office)
E-mail: dep10@cornell.edu



FRESH MARKET VEGETABLE FIELD DAY

SUSTAINABLE AND ORGANIC VEGETABLE PEST MANAGEMENT

Wednesday, August 31, 2016 | 3:00 PM – 9:00 PM

Steak dinner included with pre-registration

Cornell Vegetable Program's Fresh Market Research Site

Cornell Lake Erie Research and Extension Laboratory

6592 West Main Road, Portland, NY 14769

The Cornell Vegetable Program is hosting a Sustainable and Organic Vegetable Pest Management Field Day on August 31, 2016 at the Cornell Lake Erie Research and Extension Laboratory in Portland, NY. Extension Vegetable Specialists, Darcy Telenko, Judson Reid, and Robert Hadad along with Abby Seaman, Vegetable IPM Coordinator, and Cornell faculty Prof. Christine Smart and Prof. Stephen Reinert will be leading research site tours and answering questions on sustainable and organic pest management options for fresh market vegetable growers. Information will be provided for both conventional and organic growers at all levels of expertise. Industry representatives will have the opportunity to meet with growers to comment on their products. *DEC and CCA credits have been applied for to be available for this field day.*

Topics:

- Weed Management in Sweet Corn, Pumpkin, Winter Squash and Root Crops
- Disease Management in Organic Cucumber and Tomato Production
- Vegetable Disease Control Update
- Insect management and Specialty Crop Vegetable Variety Demonstration
- Improving Fertility Management in Vegetable Crops
- Updates on Ongoing Research Projects in the Region

Research trials comparing conventional and zone-tillage weed management options in pumpkin and winter squash will be on display. The peculiarities in regards to weed management for each tillage system will be discussed including the practice of a stale-seed bed technique using a herbicide or flame-weeder burn-down treatment as effective weed management tools. In addition, the stale-seed bed technique will be presented for use in beet and parsnip. Growers will be able to view the different weed management tools, look at the economics of utilizing each system, and ask questions. This

Helping You Put Knowledge to Work

Cornell Cooperative Extension is an employer and educator recognized for valuing AA/EEO, Protected Veterans, and Individuals with Disabilities, and provides equal program and employment opportunities.

21 South Grove St.
East Aurora, NY 14052
(716) 652-5400



Cornell University
Cooperative Extension
Cornell Vegetable Program

session will also include a viewing of sweet corn herbicide programs plots to evaluate their effectiveness in controlling weeds. Judson Reid and Abby Seaman will discuss the major tomato and cucumber diseases in New York in high tunnels and field, what symptoms we are looking for, and organic management tools available including resistant varieties and organic pesticides. Research trials will be showcasing varieties with host resistance and organic programs using disease forecasting. Dr. Christine Smart will discuss the best crop production practices for managing and controlling disease caused by bacteria, oomycetes, fungi, and viruses. New management options including host resistance, products, or techniques that are available will also be discussed. Robert Hadad, will give a hands-on demonstration of how to identify insect the pests; check for management issues that may improve or decrease insect control; and control options. In addition, a number of varieties of a diverse assortment of vegetable crops will be on display for growers to view. Dr. Steve Reiners will discuss the importance of correct crop fertility and how fertility has wide reaching impacts on yield, and more is often not better. Excessive fertility can promote weed growth and insect pressure, while insufficient nutrition leaves crops more susceptible to stresses like disease.

Pre-registration \$25 CVP enrollees/\$35 all others, includes steak dinner and handouts. Pre-registration required by **August 25, 2016**. Call 716-652-5400 or online at

<http://cvp.cce.cornell.edu/event.php?id=565>

Walk-ins welcome to join the program \$35 at the door, but will not receive dinner ticket unless pre-registered by Aug 25, 2016.

Growers will also be able to view research projects at CLEREL and are encouraged to attend a Cover Crop Workshop and Field Day the next day September 1.

<http://lergp.cce.cornell.edu/event.php?id=268>

A key component of this event is the support provided by industry organizations. Contributing organizations will be recognized as an integral part of this dynamic event. Sponsorships are available for both the Vegetable Field Day and Cover Crop Field contact Darcy Telenko at 716-697-4965 or dep10@cornell.edu for more details.

About Cornell Cooperative Extension Cornell Vegetable Program

The Cornell Vegetable Program is one of the premier regional agricultural Cornell Cooperative Extension programs in New York, serving a large multi-county region in the Western part of the state. The team's Vegetable Specialists work together with Cornell faculty and extension educators statewide to address the issues that impact the industry. The Cornell Vegetable Program provides educational programs and information to growers, processors and agri-business professionals, arming them with the knowledge to profitably produce and market safe and healthful vegetable crops, contributing to the viability of farms and the economic wellbeing of New York State. Specifically, our program focuses on food safety, variety evaluation, market development, pest management, and cultural practices.

Helping You Put Knowledge to Work

Cornell Cooperative Extension is an employer and educator recognized for valuing AA/EEO, Protected Veterans, and Individuals with Disabilities, and provides equal program and employment opportunities.

21 South Grove St.
East Aurora, NY 14052
(716) 652-5400



Cornell University
Cooperative Extension
Cornell Vegetable Program

The Cornell Vegetable Program is supported, in part, by twelve county Cornell Cooperative Extensions of Western New York: Allegany, Cattaraugus, Chautauqua, Erie, Genesee, Monroe, Niagara, Ontario, Orleans, Seneca, Wayne and Yates Counties.



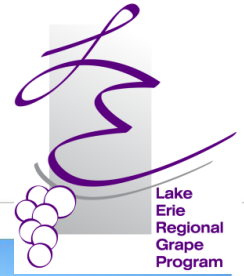
Cucumber and tomato variety trials at Cornell Lake Erie Research and Extension Laboratory. Photo Credit Darcy Telenko, CVP.

Helping You Put Knowledge to Work

Cornell Cooperative Extension is an employer and educator recognized for valuing AA/EEO, Protected Veterans, and Individuals with Disabilities, and provides equal program and employment opportunities.

21 South Grove St.
East Aurora, NY 14052
(716) 652-5400

Cover Crop Workshop and Field Day



September 1, 2016 @ CLEREL

9:00am-4:00pm

6592 West Main Rd.

Portland, NY 14769

Join the Lake Erie Regional Grape Program for a full day of education surrounding cover crops in Concord vineyards.

- Current research
- Leading scientists in cover crop research
- Tour demonstration plots
- Hear local growers sharing their experience

Fee: \$ 10; includes morning refreshments and lunch



Register by August 25, 2016 at the LERGP web-site [Registration](#) or call Kate at 716-792-2800, e-mail: kjr45@cornell.edu



Business Management

Kevin Martin
Penn State University, LERGP,
Business Management Educator



Water Stress and Berry Size

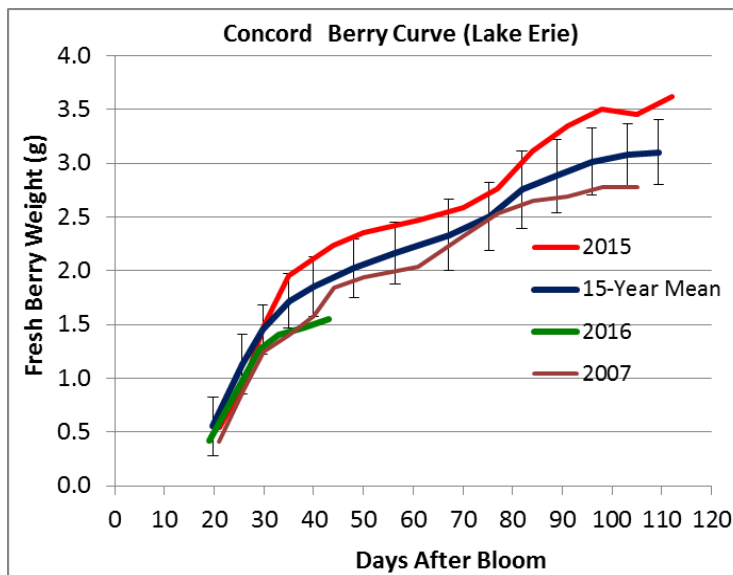
The current drought was again the topic at the most recent coffee pot meeting. This week we were in Niagara County where some areas have only accumulated three inches of rain for the past 3 months. Although most vineyards seemed to be faring well under the circumstances, we did see some blocks that were showing symptoms of severe water stress.

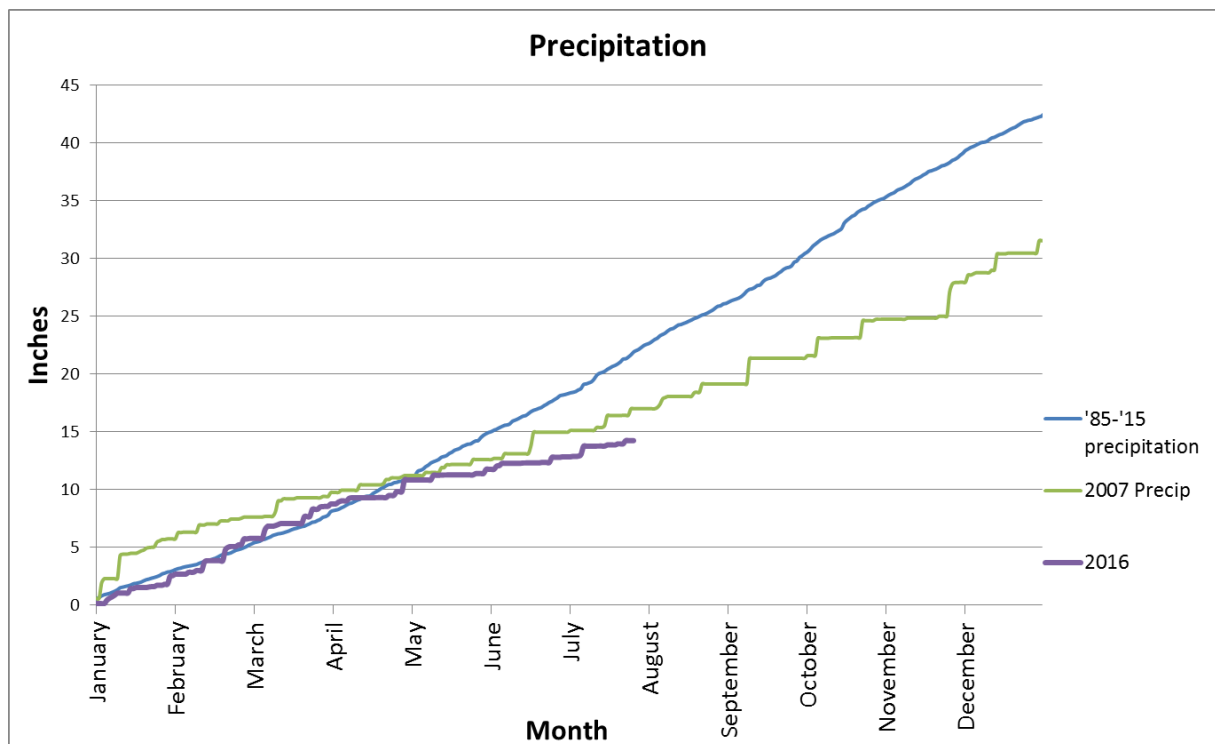
Following the berry curve, we can see the continued effects water stress has on berry size. **Samples this week came in 24% below average.** Vines suffering from water stress have had decreased cell division limiting the cells in the berries and reducing berry size.

Other symptoms of water stress are cupping and chlorotic (yellowing) leaflets (picture below), reduced shoot length and leaf size, and leaf drop.

Currently, here at CLEREL, we are **7.5 inches below average for rainfall**. However, depending on your location this amount may change. I have included two columns in the NEWA table on the next page to include weekly precipitation and accumulated precipitation totals for May June and July. Niagara County is noticeably dryer than the immediate belt with areas only receiving 3 inches in the past three months.

The NOAA 'Drought Monitor' has maintained the status of "Severe Drought" (two pages ahead) for most of the region. Growers in PA are still in "Moderate Drought".



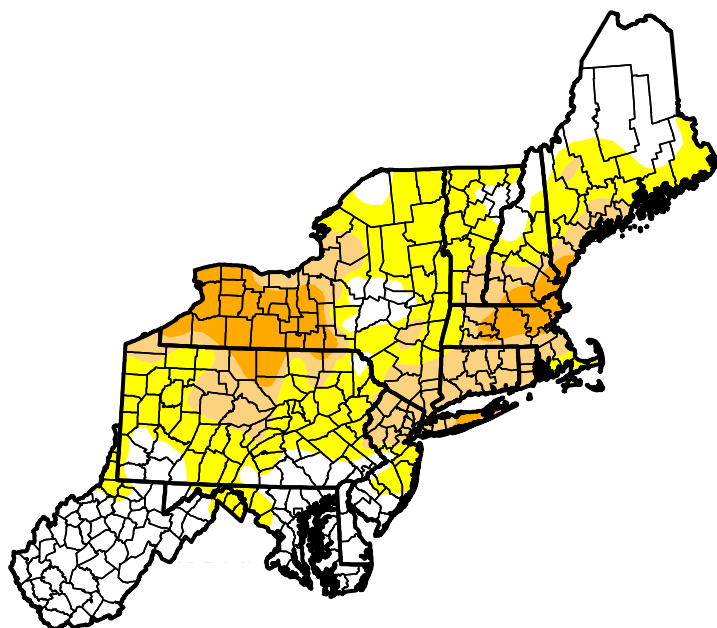


Lake Erie Grape Region NEWA Weather Data						
Location	Past week Precip	Precip. July Past 27 days	Precip. June total	Precip May total	May, June & July Total	Total March GDD
North East Lab, PA	1.11	2.12	1.92	2.13	6.17	1490
Harborcreek, PA	0.85	1.65	1.74	1.68	5.07	1466
North East Escarpment	0.83	1.83	2.37	1.52	5.72	1365
Ripley	0.42	0.97	3.86	1.50	6.33	1485
Portland CLEREL	0.37	1.44	1.44	1.48	4.36	1442
Portland Escarpment	0.47	1.14	1.24	1.56	3.94	1514
Dunkirk	1.15	1.32	2.16	1.13	4.61	1361
Silver Creek	0.87	1.93	NA	1.78		1386
Sheridan	1.12	1.58	2.23	1.85	5.66	1460
Versailles	0.81	1.36	1.47	1.72	4.55	1366
Appleton North	0.9	0.98	1.41	0.71	3.10	1306
Somerset	2.43	4.52	1.53	0.94	6.99	1425
Ransomville	0.97	1.24	0.93	0.92	3.09	1527

Note: All Weather data reported as of 7/27/2016 NA=Sensor Malfunction. Precip in inches.

U.S. Drought Monitor Northeast

July 26, 2016
(Released Thursday, Jul. 28, 2016)
Valid 8 a.m. EDT



Drought Conditions (Percent Area)

	None	D0-D4	D1-D4	D2-D4	D3-D4	D4
Current	34.19	65.81	29.09	10.10	0.00	0.00
Last Week 7/19/2016	37.54	62.46	25.15	8.60	0.00	0.00
3 Months Ago 4/26/2016	60.97	39.03	5.04	0.00	0.00	0.00
Start of Calendar Year 12/29/2015	62.10	37.90	6.60	0.00	0.00	0.00
Start of Water Year 9/29/2015	42.41	57.59	9.00	0.00	0.00	0.00
One Year Ago 7/28/2015	91.18	8.82	2.25	0.00	0.00	0.00

Intensity:

 D0 Abnormally Dry	 D3 Extreme Drought
 D1 Moderate Drought	 D4 Exceptional Drought
 D2 Severe Drought	

The Drought Monitor focuses on broad-scale conditions. Local conditions may vary. See accompanying text summary for forecast statements.

Author:
Brad Rippey
U.S. Department of Agriculture



<http://droughtmonitor.unl.edu/>

Should I Spray for Grape Leafhopper?

I have been getting an increase in questions about grape leafhopper management as their populations are becoming noticeable in a number of vineyards in the southern portion of the Lake Erie grape belt. Typically, grape leafhopper is a secondary pest which does not require treatment except in years like this, where moisture is lacking and the warm temperatures are running the leafhopper through their generations at a rapid pace. With grape leafhopper, it is all about location as not every vineyard has them, and not every vineyard that does have them, have populations worth worrying about at this time. The good news is that grape leafhopper is easily controlled by a number of different active ingredients, and typically at the lower rates, so you can watch the populations to see if they build (or our weather pattern changes and we catch up on our rainfall which means we can deal with more leafhopper) before making the application. And, if you are planning an insecticide application for grape berry moth, you can wait until that application and you will be managing two insects with one application.

Speaking of Grape Berry Moth...

According to the NEWA model, all the stations indicate we are well past the 810 DD needed to time an insecticide application in vineyards at intermediate and high risk for damage from grape berry moth. According to the extended DD forecast on the NEWA GBM model, a number of stations will be at, or past, at 1470 DD which indicates the start of the scouting period to determine the need for an application against the third generation. Threshold at this scouting time is 15% damaged clusters. Remember that it only takes one berry with GBM damage to qualify as a damaged cluster. The table below shows the GBM model results from NEWA for sites in the Lake Erie region using the estimated date of wild grape bloom (the biofix that is used to start the grape berry moth model. Sheridan, Portland, Portland Escarpment, Ripley, Harborcreek, North East Lab and Ransomville all should be at or over 1470 DD by next Tuesday, August 2 with the Erie Airport already meeting that DD threshold. Continue to access the grape berry moth model for the station(s) nearest you on the NEWA website <http://newa.cornell.edu> to get a “heads-up” on when you should start scouting for the next generation of grape berry moth. Accessing the GBM model page on NEWA also provides you with information on the pest status and what pest management measures should be taken as shown in the figure below.

NEWA Location	Wild grape bloom date*	DD Total on July 28, 2016
Versailles	May 30	1335
Dunkirk Airport	June 3	1267
Sheridan	May 31	1379
Silver Creek	June 3	1272
Portland Escarp.	May 31	1365
Portland	June 1	1331
Ripley	May 31	1379
North East Escarp	June 2	1237
Harborcreek	May 31	1372
North East Lab	June 2	1349
Erie Airport	May 30	1478
Ransomville	June 1	1396
Somerset	June 3	1305
North Appleton	June 10	1127
* Estimated date provided by NEWA website		

Save the Date! NYS IPM Climate Conference – August 15, 2016

*With all the talk about climate change you might be wondering how it will affect food production, pests, and even landscapes - and what you can do about it. The Second Annual NYS Integrated Pest Management conference can help! **Climate, Weather, Data: Protecting Our Crops and Landscapes** will be held **August 15, 2016** at the Cornell Cooperative Extension Office in Voorheesville, NY.*

A wide variety of speakers from NYS and the Northeast will provide background information on the current state of knowledge on climate change and changes in our weather patterns, and how collecting climate and weather data can help us predict and manage pests. Mike Hoffmann and Allison Chatrchyan from the Cornell Institute for Climate Change and Agriculture (www.climateinstitute.cals.cornell.edu) will discuss what you can do about climate change, and the Climate Smart Farming Program. Jerry Brotzge will explain the NYS Mesonet (www.nysmesonet.org). Juliet Carroll from NYS Integrated Pest Management will cover the tools for growers in the Network for Environment and Weather Applications system (www.newa.cornell.edu). David Hollinger will present resources from the Northeast Regional Climate Hub (www.climatehubs.ocs.usda.gov). Open discussion sessions are included so you can ask your own questions. The final agenda will be available soon, so stay tuned!

We are honored that Richard Ball, the Commissioner of the NYS Department of Agriculture and Markets, will kick off the conference with opening remarks

The program will run from 9:00-4:15 and costs \$45 – which includes lunch, and breaks.

Registration information, a map, and the draft agenda can be found at the [Climate, Weather, Data website](#)

If you have questions, please contact Amanda Grace at arw245@cornell.edu or 315 787-2208.

Climate, Weather, Data: Protecting Our Crops and Landscapes



Save the Date!

When: August 15, 2016, 9:00 – 4:15

Where: Cornell Cooperative Extension Albany
County, Voorheesville, NY

With all the talk about climate change you might be wondering how it will affect food production, pests, and even landscapes - and what you can do about it. The Second Annual NYS Integrated Pest Management conference can help!

A wide variety of speakers from NYS and the Northeast will provide information on the current state of knowledge on climate change, changes in our weather patterns, and how collecting climate and weather data can help us predict and manage pests. Join us to learn and discuss!

\$45 includes materials, lunch, and breaks.

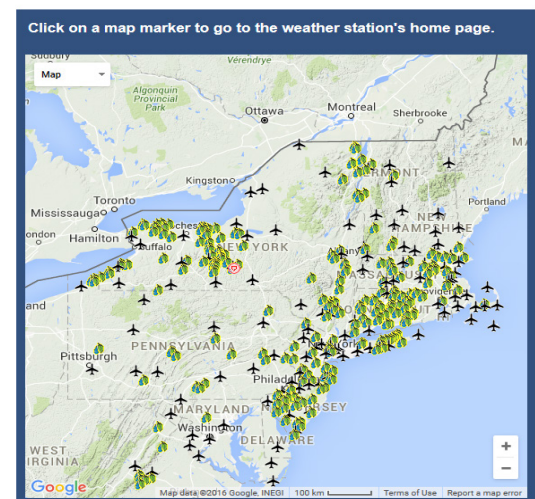
The draft agenda, registration information, and map can be found at:

tinyurl.com/hq8tbm2

If you have questions, please contact Amanda Grace at arw245@cornell.edu or 315-787-2208.



Welcome to the NEWA Home Page



NEWA stations record temperature, leaf wetness, relative humidity, precipitation, solar radiation, wind speed and direction.

In the Vineyards, PA

Andy Muza
County Extension Educator
Penn State, LERGP

In the Vineyard (7-28-16)

Diseases

Powdery mildew – incidence of powdery mildew on leaves remained at low levels in sites examined (Figure 1). However, symptoms on terminal leaves on Concord shoots are becoming more evident (Figure 2).

Black rot – a positive aspect of the dry weather this season is that black rot infections have been rare. But, this week



Figure 2. Distorted terminal leaves on Concord shoot due to powdery mildew infection



Figure 1. Small powdery mildew colonies on Concord leaf

at 1 site, I actually found black rot on Concord berries in rows bordering a wooded area (Figure 3). Although Concord berries are now past the

point of susceptibility to black rot infections, the potential for infection is up to 6 weeks after bloom. Therefore the berries that I found with black rot were infected at the end of the susceptibility period and are just now starting to show symptoms.

Insects

Grape Berry Moth – this week at 1 Severe Risk site I was still able to find GBM eggs. This site historically has very high levels of GBM injury and this year is no exception. Note that a site like this is not indicative of the vast majority of sites throughout the region. At High, Moderate and Low risk sites no eggs were found.

The GBM Degree Day Model in NEWA <http://newa.cornell.edu/index.php?page=berry-moth> indicates that scouting for the next generation should begin when degree day accumulation reaches 1470 DD. This should occur sometime next week for vineyards in our region. Depending on the temperatures at the



Figure 3. Black rot infected berries on Concord cluster

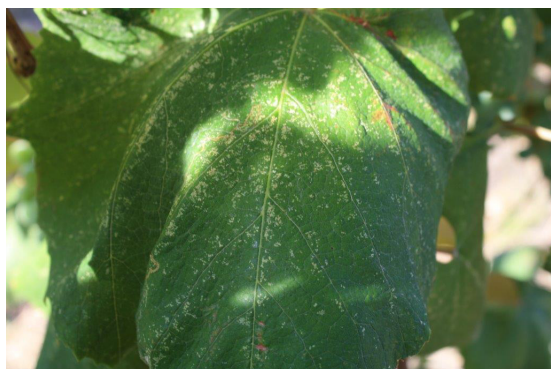


Figure 4. Grape Leafhopper stippling on Concord leaf

various sites in our region, the next application for GBM should be applied the second or third week in August.

Grape leafhopper – GLH feeding injury (Figure 4) and some nymphs and adults were found at more sites this week. Population levels were still low at the majority of sites, although a few blocks started to show noticeable increases in feeding injury on the leaves. However, levels were not yet high enough to even consider an insecticide application. Monitor blocks for potential buildup of GLH populations as the season progresses.

2016 eNEWA Grape Project Subscription Sign-Up

Subscriber information

Name _____

Email address _____

City _____

Select Location(s) (circle as many as you like, or write in below)

Lake Erie Region

Appleton, North

Appleton, South

Dunkirk

Erie

Harborcreek

North East Escarpment

North East Lab

Portland

Portland Escarpment

Portland Route 5

Ransomville

Ripley

Sheridan

Silver Creek

Versailles

Finger Lakes Region

Aurora

Branchport

Dresden (FLGP/FLCC)

Dundee (Weimer)

Fayette 3 Brothers

Geneva

Geneva (Bejo)

Hector

Interlaken (Airy Acres)

Lakemont

Lansing

Lodi (Lamoreaux)

Lodi (Shalestone)

Lodi (Standing Stone)

Penn Yan

Romulus (B. wood Grove)

Romulus (Thirsty Owl)

Varick (Swedish Hill)

Watkins Glen

Watkins Glen (Lakewood)

Select eNEWA Delivery Times (write in times below) Delivery requests should be on the hour.

Mail to: Tim Weigle, CLEREL, 6592 West Main Road, Portland, NY or scan and email to thw4@cornell.edu

Chautauqua Industrial Development Agency, Chautauqua County Department of Planning and Economic Development, Cornell Lake Erie Regional Grape Program, and Cornell Cooperative Extension of Chautauqua County proudly present the inaugural Chautauqua County Craft Beverage Summit

Malting barley, cooperatives, hops production and the potential for the craft beverage industry in NYS will be discussed with all aspects covered from producing the raw materials, producing a craft beverage, marketing the finished product and working together to bring a craft beverage operation to fruition in Chautauqua County.



Thursday, August 11, 2016
8:00 AM - 3:00 PM
CLEREL
6592 West Main Road
Portland, NY 14769
And
21 Brix Winery

Space is LIMITED for this FREE Event
Don't Delay- Register today at:
<https://lergp.cce.cornell.edu/event.php?id=270>

Thursday, August 11

Agenda (may be subject to change)

8:00 am
Registration
8:15 am
Welcome
8:45 am
Climbing Bines
9:15 am
Star Cider
9:55 am
NY Craft Malt, LLC
10:15 am
Liberty Vineyards
10:15 am
Break/CCE Tour
11:00 am
Harvest NY
11:30 am
Cooperatives
12:00 pm
Mazza Winery
12:30 pm
Lunch
1:00 pm
Five & 20 Spirits and Brewing
2:00 pm
Olde Chautauqua Farms
2:30 pm
Question & Answers





Proudly Representing
Diversified
Crop Insurance Services

Join us at the Lake Erie Regional Grape Program Annual Winter Grower Conference!



Stop by our booth between **8:00 am** and **4:00 pm** to be registered to win a prize and learn how we can help protect your grape crop from loss of production.

When: Tuesday, March 22, 2016

Where: Williams Center at SUNY Fredonia - 280 Central Ave., Fredonia, NY 14063

Mark C. Muir Agency
Mark C. Muir

10509 Route 6 • Union City, PA 16438-9707
Phone: (814) 397-0033

DCIS - Toll Free: (866) 669-3429 • Email: info@diversifiedservices.com | Diversified Crop Insurance Services is a company of CGB Enterprises, Inc. and is an Equal Opportunity Provider. #6590_021916



The Only FRAC Group U6 Fungicide
 Labeled for Grapes & Cucurbits
 Highly Effective on Powdery Mildew
 No Cross-Resistance
 Protectant / Preventative Action



FRAC Group 3
 Labeled for Grapes
 Controls Powdery Mildew & Black Rot
 Protectant + Curative Activity
 Highly Systemic



Badge X₂ 
 Fungicide/Bactericide
 High Quality Copper
 Excellent Mixing Characteristics
 Highly Active at Lower Rates
 Enhanced Crop Safety



Mite control on Grapes
 Knockdown and Residual

Dave Pieczarka
 315.447.0560



Torino® is a registered trademark of Nippon Soda Company, LTD. EPA Reg No 80333-103-10163. Mettler®, Badge® SC, Badge® X2 are registered trademarks of Isagro USA. Mettler EPA Reg No 80289-8, Badge SC EPA Reg No 80289-3, Badge X2 80289-12. NeXter is a trademark of Nissan Chemical Industries. EPA Reg No 81880-4-10163. Always read and follow label directions



10401 Sidehill Road
 North East, PA 16428
 814-725-3102
www.cloverhillsales.com



Harvester Parts and Belting
 Southern Yellow Pine Posts
 And So Much More!!

Brookside Society
 of Professional Consultants

DAVID J. MAILLE
 Consultant
 Phone: (814) 898-0755
 Cell: (814) 572-5781
maillcon@aol.com

MAILLE CONSULTING SERVICES
 Agricultural-Environmental

Jared Mosier
 Phone: (301) 512-3977
jmosier1@gmail.com
 7653 Dutton Rd.
 Harborcreek, PA 16421

LERGP Website Links of Interest:



Check out our new Facebook page!!

Cornell Lake Erie Research & Extension Laboratory Facebook page
<https://www.facebook.com/Cornell-Lake-Erie-Research-and-Extension-Laboratory-678754995584587/?fref=ts>

Table for: Insecticides for use in NY and PA:

<http://lergp.cce.cornell.edu/submission.php?id=69&crumb=ipm|ipm>

Crop Estimation and Thinning Table:

http://nygpadmin.cce.cornell.edu/pdf/submission/pdf65_pdf.pdf

Appellation Cornell Newsletter Index:

<http://grapesandwine.cals.cornell.edu/cals/grapesandwine/appellation-cc----->

Veraison to Harvest newsletters:

<http://grapesandwine.cals.cornell.edu/cals/grapesandwine/veraison-to-harvest/index.cfm>

Go to <http://lergp.cce.cornell.edu/> for a detailed calendar of events, registration, membership, and to view past and current Crop Updates and Newsletters.



**BOLD.
POWERFUL.
NARROW.**



THE NEW T4F AND T4V SERIES TRACTORS COMBINE A BOLD NEW STYLE WITH MORE POWERFUL FEATURES IN A STREAMLINED DESIGN THAT'S IDEAL FOR NARROW ROWS.

Introducing the new face of narrow tractors from the world's leading supplier of narrow tractors: New T4F and T4V Series narrow tractors. A sleek new look, enhanced ergonomics, advanced driver safety and powerful new hydraulic options.

- Powerful, responsive and efficient 4 cylinder, 207 cu. in. engines up to 93 PTO hp
- Choice of open platform, standard Blue Cab™ or new Blue Cab™ 4 with cab level 4 protection (meets European Standards for filtration and pressurization EN 15695-2:2009 and EN 15695-1:2009)
- Large rear hitch lift capacity up to 4,400 lbs



Larry Romance & Son Inc
2769 Rt 20 - Box 38
Sheridan, NY 14135
(716) 679-3366
www.LarryRomanceandson.com



Lake Erie Regional Grape Program Team Members:

Andy Muza, (ajm4@psu.edu) Extension Educator, Erie County, PA Extension, 814.825.0900

Tim Weigle, (thw4@cornell.edu) Grape IPM Extension Associate, NYSIPM, 716.792.2800 ext. 203

Kevin Martin, (kmm52@psu.edu) Business Management Educator, 716. 792.2800 ext. 205

Luke Haggerty, (llh85@cornell.edu) Grape Cultural Practices, 716.792.2800 ext. 204

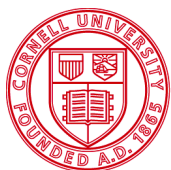
This publication may contain pesticide recommendations. Changes in pesticide regulations occur constantly, and human errors are still possible. Some materials mentioned may not be registered in all states, may no longer be available, and some uses may no longer be legal. Questions concerning the legality and/or registration status for pesticide use should be directed to the appropriate extension agent or state regulatory agency. Read the label before applying any pesticide. Cornell and Penn State Cooperative Extensions, and their employees, assume no liability for the effectiveness or results of any chemicals for pesticide usage. No endorsements of products are made or implied.

Cornell University Cooperative Extension provides equal program and employment opportunities.

Contact the Lake Erie Regional Grape Program if you have any special needs such as visual, hearing or mobility impairments.

CCE does not endorse or recommend any specific product or service.

THE LAKE ERIE REGIONAL GRAPE PROGRAM at CLEREL
6592 West Main Road
Portland, NY 14769
716-792-2800



Cornell University
Cooperative Extension



College of
Agricultural
Sciences