

# LERGP Crop Update

\*\* January 8, 2016 \*\*



The Lake Erie Regional Grape Program



**Building Strong and Vibrant New York Communities**

*Diversity and Inclusion are a part of Cornell University's heritage. We are a recognized employer and educator valuing AA/EEO, Protected Veterans, and Individuals with Disabilities.*

## Budgets and Tolls

The Governor of NY made news with a proposal to freeze EZ-Pass toll rates on the NYS Thruway, create a 50% tax credit for residents and a 100% tax credit for NY farmers. For NYS grape growers this will add up to savings and options.

The logistical nightmare that is our regional grape harvest, conservatively, results in toll costs of \$20,000 for our regional growers. These costs will be eliminated for NY growers. The greatest impact will be, of course, for growers delivering from Niagara County or growers delivering to Canandaigua.



**Figure 1: NYS Thruway Construction.** The tolls that would never go away might, for NY Farmers at least.

Locally, a free Thruway may create options for more localized hauling. I don't know of any growers that haul from Ripley or Silver Creek to Westfield via I-90. This may well become an option that growers take advantage of with a free I-90. Logistically it is hard to estimate how often growers will find the 90 to be a logistical benefit. If NY growers regularly used I-90 to haul it would result in an additional \$50,000 in tolls. These 3,200 truckloads will now be able to utilize I-90 for grape hauling, if deemed beneficial.

As growers look to minimize their impact on neighbors and reduce liability concerns, the Thruway offers non-monetary savings as well.

Routes 5 and 20 become crowded with trucks during harvest. While it is unlikely growers will travel out of their way to use the Thruway, alleviating truck traffic on 5 and 20 will benefit growers and local traffic alike.

Budget and revenue redistribution are hot topics in Pennsylvania as well. The budget impasse could impact local growers. With sales tax, income tax and property tax issues all up in the air speculating on the impacts would be premature. As with any long delayed State budget, a number of issues arise and the likelihood of structural changes decrease. It should be business as usual for PA growers. The cost of doing business in PA is generally lower than it is for New York growers but no free perks are scheduled.



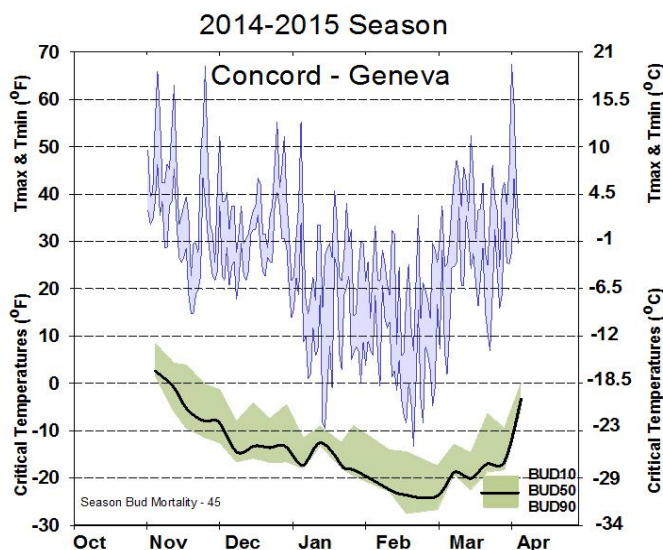
## Bud Hardiness

Our first cold temperatures of 2016 occurred early this week with some areas of the belt dipping down below zero. In response to the weather change many growers have been asking if the vines were ready for this shift in temperature. The short answer is yes. In fact, these single digit temperatures are helping the vines acclimate down their respective hardiness threshold.

As part of the 'Bud Hardiness Project', canes from different grape varieties grown in the Lake Erie region are sent to the New York State Agricultural Experiment Station in Geneva for bud hardiness evaluation (<http://grapesandwine.cals.cornell.edu/extension/bud-hardiness-data/>). The evaluation consists of a differential thermal analysis (DAT) used to estimate the temperature a bud can withstand before death by recording the 'Low Temperature Exotherms' (LTE). For example, DTA is used to predict the lethal temperature that would kill 50% (LT50) of the buds of a specific cultivar. The first samples for 2016 were sent early this week and we are expecting to see results early next week (Jan. 11). By sending bi-monthly cane samples we are able to track bud hardiness throughout the dormant season.

Although, the 2016 graphs are in the process of being made I have included the 2014-2015 Concord graph to show bud LTs in response to temperature. The temperatures in purple shading show the temperatures throughout the winter seasons. In January 2015 there were three points where temperatures dropped below zero. The 2012-2013 graph shows how buds become less tolerant to cold temperature as the season warms up and the buds progress out of dormancy. To follow bud hardiness LTEs for the Lake Erie or other New York grape regions go this link.

<http://grapesandwine.cals.cornell.edu/extension/bud-hardiness-data/>



# NDVI Survey

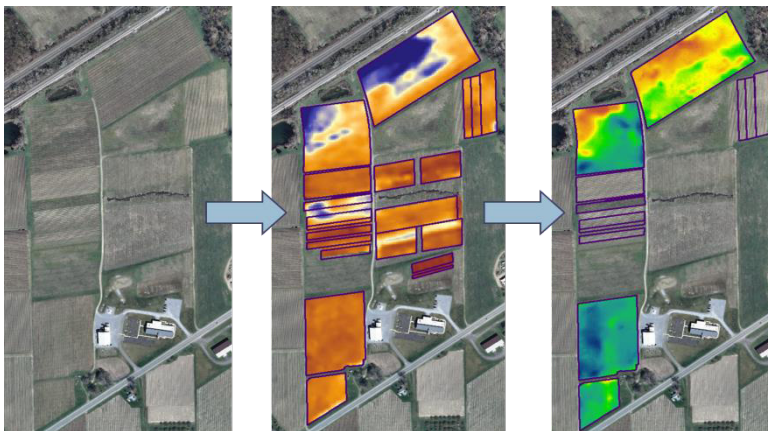


Now that the 2015 growing season is behind us and everyone is hopefully looking forward to 2016, I would first like to thank you all for participating in the 2015 NDVI collection and ongoing interest.

We have put together a short survey as we finish up one of our sensor technology projects. Completing the survey will serve 3 purposes. First, it provides us with important information on current interest you have incorporating sensor technology into your vineyard. Second, it gives you the opportunity to provide us with suggestions on how to improve our programming for your operation and third, it provides us with valuable information that we can share with the funders of this project which will hopefully continue to fund the project and allow us to continue to provide this service at no charge to participants in 2016.

So please take a few minutes to provide your input by answering 5 short questions. The survey can be found at <https://www.surveymonkey.com/r/29BQ25P>

I thank you in advance for your participation in the project and in completing the survey.



**NORTHEAST  
EXTENSION  
RISK MANAGEMENT  
EDUCATION**



United States  
Department of  
Agriculture

National Institute  
of Food and  
Agriculture

## **Need Credits? Save money by planning ahead.**

Pull out your pesticide applicators licenses and check to see when you need to renew. If you are running low on credits as well as time to get them, make plans to attend the **Lake Erie Regional Grape Growers conference on March 22, 2016 at Fredonia State University.**

While we are still working on confirming all of our speakers, the agenda promises to provide up to 2.5 credits (including 1 core credit for PA growers) in the morning session and up to 1 credit by attending one of the breakout sessions in the afternoon. There will be talks on Modes of actions, grape rootworm, Control of Perennial and Invasive weeds, grape berry moth and much, much more. And the cost of admission is a bargain if you consider that not only do you get credits, but also the opportunity to gain knowledge on all aspects of a vineyard operation, buffet lunch and the outstanding chocolate chunk and macadamia nut cookies at break.

If you were horrified to find that you only have a month or so to get credits when you checked your license for the renewal date, you are in luck as you can now take on-line classes and receive credits for them. There are a number of courses that are applicable to a vineyard operation. Most courses are an hour in length and will provide you with 1 credit (NY) or 2 credits (PA) for that hour worth of credits. Cost of an hour long course is \$25 – which is why the LERGP Growers conference is such a bargain. You can find these courses at the Cornell Cooperative Extension PMEP Distance Learning Center at; <http://pmeppcourses.cce.cornell.edu/>

More information on the Growers' conference, including registration information, will be in our January newsletter and in future Crop Updates.

Hope to see you at the conference.

# Employment Opportunity

CLEREL and LERGP are hiring. We currently have 2 part time temporary positions open. The full job descriptions can be found at the following link:

NEW!!!

<https://cornellu.taleo.net/careersection/10165/jobsearch.ftl>

the Job titles and Numbers are as follows:



CLEREL-Field Research Assistant - Job Number 30547

LERGP- Extension Aide I – Web Maintenance – Job Number 30205

The application process can be completed on-line at the above link.

## LERGP MEMBERSHIP 2016:

Important changes, please take note!

Enrollment is shifting back to being managed by the CCE office of Chautauqua County. You will have received or, soon will receive, the combined enrollment form in the mail. The form has been reorganized and is very easy to understand and utilize. There are just 2 lines to mark for LERGP members. You will see that the base fee is already pre-filled, then you can opt for LERGP membership and if you want hard copy mailings, you will opt to pay the extra \$35.00 fee. Total the columns, make the check out to CCE-Chautauqua County and mail it to them (not the LERGP Office) at 3542 Turner Rd, Jamestown NY 14701.

You will still have the opportunity to order Guidelines for Grapes through CCE- Chautauqua County as well. As indicated on the enrollment form, they will send out an order form once the guideline booklets are available. (look for this in January) This will be conducted completely through the Chautauqua county office as well.

If you have any questions, please feel to contact me by phone at 716-792-2800 ext. 202, or e-mail me at [kjr45@cornell.edu](mailto:kjr45@cornell.edu).



Cornell University  
Cooperative Extension  
Chautauqua County

3542 Turner Road  
Jamestown, NY 14701-9608  
t. 716.664.9502  
f. 716.664.6327  
e. [chautauqua@cornell.edu](mailto:chautauqua@cornell.edu)  
[www.cce.cornell.edu/chautauqua](http://www.cce.cornell.edu/chautauqua)

December 2015

## **Commercial Driver's License (CDL) Training for Agricultural Producers and Employees**

**3-Day classroom training (20 hours) followed by  
individual scheduled drive-time (20 hours for Class B or 25 hours for Class A)**

**-Tuesday, February 16, Wednesday, February 17, Thursday, February 18, 2016-  
8:00 AM to 4:00 PM each of the three days w/ permit testing on Thursday afternoon.**

Training location: Lake Erie Regional Grape Program Office, 6592 West Main Road  
Portland, NY 14769

This CDL training (Class A or B License) is being organized by Cornell Cooperative Extension of Chautauqua County and will be taught by CDL instructors from Erie 2-CC BOCES, Ashville, NY.

The cost of the training is \$1125.00 per person for Class B or \$1250.00 for Class A, which includes the classroom training and the individual drive-time (scheduled individually following the classroom training and after obtaining the CDL permit). The cost of the CDL permit, road test and DOT physical will be an additional cost paid by each participant. Each person should also bring a bag lunch, beverages, and snacks each day.

To register for this CDL Training, please complete the registration form, make check payable to Cornell Cooperative Extension, and send full payment to or deliver to:

Cornell Cooperative Extension of Chautauqua County, 3542 Turner Road, Jamestown, NY 14701.

**Please Note: Registration will be accepted on a first-come first serve basis (maximum of 12 participants) by date payment is received. Full payment must be received at the Cornell Cooperative Extension of Chautauqua County office by January 20<sup>th</sup> to participate in this CDL training program. Once payment is received, additional details will be provided regarding the DOT physical which is required before the first class on February 15th.**

If you have specific questions about the CDL training program and license, please contact Steve Hayes, CDL Instructor at Erie 2-CC BOCES at 716-763-9457 X 3028. If you have questions about registering for the training, please contact Lisa Kempisty, Cornell Cooperative Extension of Chautauqua County at 716-664-9502 Ext. 203.

*Lisa H. Kempisty*

Lisa H. Kempisty  
Extension Community Educator  
Dairy/Livestock

*Building Strong and Vibrant New York Communities*

Cornell Cooperative Extension in Chautauqua County provides equal program and employment opportunities.

**Commercial Driver's License (CDL) Training for  
Agricultural Producers and Employees  
Registration**

Tuesday-Thursday- February 16, 17 and 18, 2016 at the  
Lake Erie Regional Grape Program Office, 6592 West Main Road, Portland, NY 14769

Name(s): \_\_\_\_\_  
\_\_\_\_\_

Farm or Business Name: \_\_\_\_\_

Mailing address: \_\_\_\_\_

Town: \_\_\_\_\_

Zip Code: \_\_\_\_\_

Phone: \_\_\_\_\_

Cell Phone: \_\_\_\_\_

E-mail address: \_\_\_\_\_

Please check one: \_\_\_\_\_ Class B License      \_\_\_\_\_ Class A License

Please include payment of \$1125.00 (Class B) or \$1250.00 (Class A) per person made payable to "Cornell Cooperative Extension".

Fee must be paid by check or cash in full by January 20<sup>th</sup> on a first come–first serve basis to participate in this CDL training. Please mail or deliver to Cornell Cooperative Extension of Chautauqua County, 3542 Turner Road, Jamestown, NY 14701.





## **LERGP Website Links of Interest:**

Check out our new Facebook page!!

Cornell Lake Erie Research & Extension Laboratory Facebook page

<https://www.facebook.com/Cornell-Lake-Erie-Research-and-Extension-Laboratory-678754995584587/?fref=ts>

Table for: Insecticides for use in NY and PA:

<http://lergp.cce.cornell.edu/submission.php?id=69&crumb=ipm|ipm>

Crop Estimation and Thinning Table:

[http://nygpadmin.cce.cornell.edu/pdf/submission/pdf65\\_pdf.pdf](http://nygpadmin.cce.cornell.edu/pdf/submission/pdf65_pdf.pdf)



Appellation Cornell Newsletter Index:

<http://grapesandwine.cals.cornell.edu/cals/grapesandwine/appellation-cornell/>

Veraison to Harvest newsletters:

<http://grapesandwine.cals.cornell.edu/cals/grapesandwine/veraison-to-harvest/index.cfm>

Go to <http://lergp.cce.cornell.edu/> for a detailed calendar of events, registration, membership, and to view past and current Crop Updates and Newsletters.



**Lake Erie Regional Grape Program Team Members:**

Andy Muza, (ajm4@psu.edu) Extension Educator, Erie County, PA Extension, 814.825.0900  
Tim Weigle, (thw4@cornell.edu) Grape IPM Extension Associate, NYSIPM, 716.792.2800 ext. 203  
Kevin Martin, (kmm52@psu.edu) Business Management Educator, 716. 792.2800 ext. 205  
Luke Haggerty, (llh85@cornell.edu) Grape Cultural Practices, 716.792.2800 ext. 204

This publication may contain pesticide recommendations. Changes in pesticide regulations occur constantly, and human errors are still possible. Some materials mentioned may not be registered in all states, may no longer be available, and some uses may no longer be legal. Questions concerning the legality and/or registration status for pesticide use should be directed to the appropriate extension agent or state regulatory agency. Read the label before applying any pesticide. Cornell and Penn State Cooperative Extensions, and their employees, assume no liability for the effectiveness or results of any chemicals for pesticide usage. No endorsements of products are made or implied.

Cornell University Cooperative Extension provides equal program and employment opportunities.

Contact the Lake Erie Regional Grape Program if you have any special needs such as visual, hearing or mobility impairments.

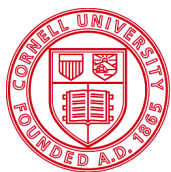
CCE does not endorse or recommend any specific product or service.

THE LAKE ERIE REGIONAL GRAPE PROGRAM at CLEREL

6592 West Main Road

Portland, NY 14769

716-792-2800



**Cornell University**  
Cooperative Extension

**PENNSTATE**



College of  
Agricultural  
Sciences