

An Update from North East

July 24, 2015



Don't forget to register for the Grape Twilight Meeting and Annual Erie County Horticultural Society's Chicken BBQ. Deadline for registration is Thursday, July 30 to 814-825-0900.



In the Vineyard:

Andy Muza, Extension Educator, Penn State University

In the Vineyard (7-23-15) – Andy Muza

Diseases

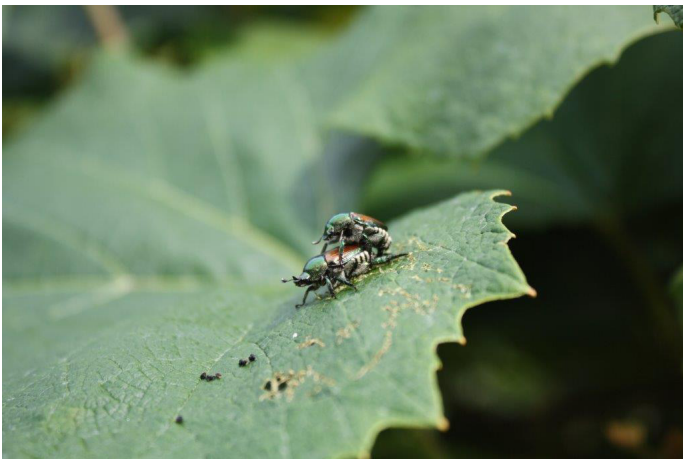
Downy Mildew & Powdery Mildew – DM and PM leaf infections were present but at low levels in Concord and Niagara blocks checked. Leaf infections can occur throughout the season, so keep checking blocks to determine if levels begin to increase.

Black Rot – new symptoms on berries were observed from infections which occurred previously while berries were still susceptible. Since Concord grapes can still be infected up to 5 - 6 weeks after cap fall, expression of berry symptoms are possible into mid - August.

Insects

Grape Berry Moth – GBM injury levels remained about the same as last week in vineyards examined. Continue to follow the GBM Degree Day Model in NEWA <http://newa.cornell.edu/index.php?page=berry-moth> and renew scouting for the third generation at least by the time that the model indicates.

Japanese Beetle – Population levels remained low in Concord vineyards I checked. However, some growers were reporting leaf injury and buildup of beetle levels in certain blocks. Monitor your vineyards, especially young blocks and wine grape sites, for potential increases in population levels.



Japanese Beetles on Concord leaf

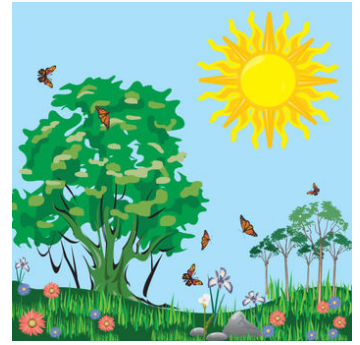


Developing Black Rot lesions on Concord berries

Weather Update: Bryan Hed

Research Support Technologist in Plant Pathology, North East Lab

Weather: We just experienced 8 consecutive days without rainfall, and made some gains in heat accumulation; both welcome changes indeed. Our rainfall total for July remains at 4.61” and we currently have racked up 1309 growing degree days since April 1.



I'm happy to say, there are no downy mildew infection periods to report over the past week! Also, being 5-6 weeks past bloom, our risk of new black rot infections, at least on juice grapes, is nearly nil. However, black rot fruit infections that occurred during the last infection event on July 13-15 may not become manifest until well into August. Of course powdery mildew will continue to build throughout the season, as secondary inoculum can infect grape leaves without rainfall. So, virtually every day is an infection period for powdery mildew. The continuation of sprays for leaf protection is going to depend on crop load (from crop estimation; the larger the crop, the more affordable it is to keep spraying, the more you have to lose, and the more you need a healthy canopy to ripen that above average crop), the abundance or lack of disease (from scouting; the more disease you currently have, the more likely it is to cause economic damage if you don't continue to control it) and the weather (will ripening conditions be good or bad? always a wild card).



Cornell University
Cooperative Extension

Cooperative Extension • Cornell and Penn State
Lake Erie Regional Grape Program



GRAPE TWILIGHT MEETING & ERIE COUNTY HORTICULTURAL SOCIETY'S ANNUAL CHICKEN BBQ

DATE: WEDNESDAY, AUGUST 5, 2015

PLACE: **Gravel Pit Park**
10300 West Main Road (Rt. 20)
North East, PA 16428

TIME: GRAPE PROGRAM – 5:00 - 6:00 P.M.
FREE CHICKEN BBQ – 6:00 P.M.

NOTE: Farm Equipment Display by various vendors – 3:30 – 7:00 P.M.

GRAPE PROGRAM:

Information on Grants available to Grape growers – 5:00 – 5:30 P.M.

Timothy J. Bruno & Jacob Moore, Department of Environmental Protection, Brian Wolff, Natural Resources Conservation Service and Earl J. Brown, Erie County Conservation District

Insect and Disease Management Updates – 5:30 - 6:00 P.M.

Bryan Hed and Jody Timer, Lake Erie Regional Grape Research & Extension Center, North East, PA
Andy Muza, Tim Weigle, Kevin Martin, and Luke Haggerty, Lake Erie Regional Grape Extension Team

This meeting will be assigned 1 Category pesticide re-certification credit pending approval by the Pennsylvania Department of Agriculture. Pesticide re-certification credits have also been applied for to NYDEC for New York growers.

NOTE: The BBQ is free but REGISTRATION is mandatory. If you do not register, a meal will not be reserved for you. Register by Thursday, July 30, by calling Penn State Extension Erie County at (814) 825-0900.

Sincerely,

Andy Muza
County Extension Educator

Penn State encourages persons with disabilities to participate in its programs and activities. If you anticipate needing any type of accommodation or have questions about the physical access provided, please contact Andy Muza at 814-825-0900 in advance of your participation or visit.

Where trade names are used, no discrimination is intended and no endorsement by the Cooperative Extension Service is implied.

7/10/15