



Crop Update for September 11, 2014



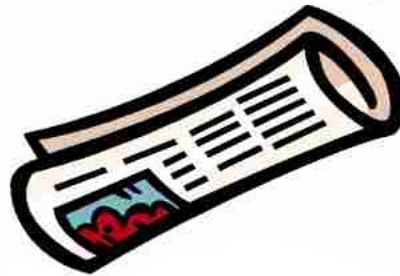
The harvest season is upon us.

The season of meetings and events has come to a close and the focus has shifted to preparing for the harvest.

Events will be posted as they arise in the coming months.

Enjoy the last few weeks of summer!

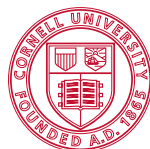
The September issue of the LERGP Newsletter will be available tomorrow. You will receive another e-mail informing you when it is ready to view.



Newsletter

Building Strong and Vibrant New York Communities

Diversity and Inclusion are a part of Cornell University's heritage. We are a recognized employer and educator valuing AA/EEO, Protected Veterans, and Individuals with Disabilities.



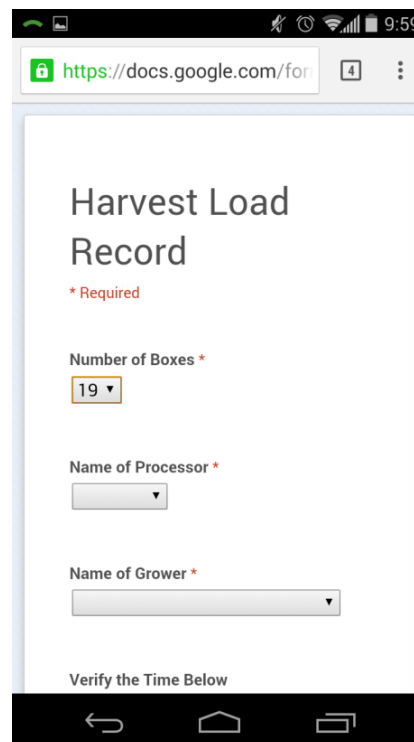
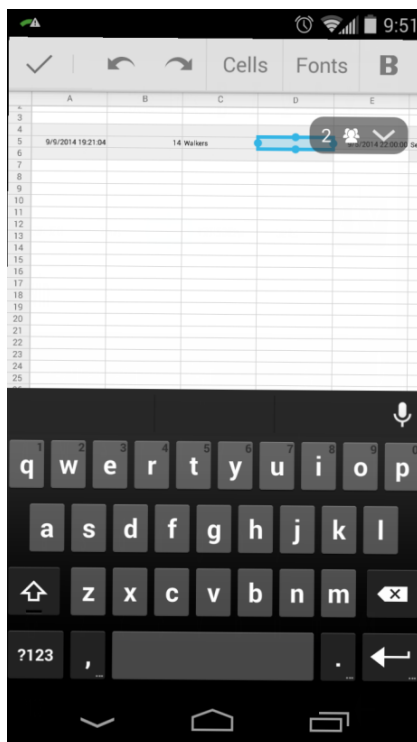
Cornell University

Electronic Records Management

As average farm size continues to grow, data management becomes a problem. Dedicated vineyard management solutions tend to be specialized and expensive to develop. So far, they're more than most growers need. Software developed for general use is not always the greatest tool. Electronic document sharing is one area that can be generally helpful. It becomes more helpful as the number of devices on the farm expands.

While paper slips for harvest records have been used for decades, the transfer of paper from one person to the next creates an opportunity for error. Also, the paper slip may not reflect all the information you would like to retain to analyze block yields. Field blending can create particular challenges toward record management.

One solution is a Google Drive Form. These forms allow users to input data into a spreadsheet without actually opening the sheet. This type of data entry is much more efficient for phone and tablet users. For a comparison of the two tools, these are actual size screenshots comparing a spreadsheet and a form on the same mobile device. As you can see, the spreadsheet is entirely illegible. You could zoom in, but you're already unable to see about half the sheet.



Those with a gmail account already have access to [google.com/drive](https://drive.google.com/). Logging into my account the top of the screen shows:



CREATE



My Drive > Farm



TITLE

OWNER

My Drive

Harvest Load Report

I can then select the create button on the top left. A window pops up and I select forms. Next I choose a title and a theme, which is fairly straightforward. Following that I get to the heart of the matter. Here is where I design a form that captures records I want to retain. First I type a description. This may need to be more or less detailed depending on the number of users accessing the form.

Next I'll type a question in the question box. If the question seems confusing I have the opportunity to add help text. Many of the questions I'll be using to record

Page 1 of 1

Harvest Records

Please complete this form to record truck information after each load.

Question Title
Help Text
Question Type

Multiple choice ☐ Go to page based on answer
☐ Option 1
☐ Click to add option or Add "Other"
 ☐ Required question

Add item

harvest data are known as list questions. A list question allows me to create a great deal of options to select from. For example, I can ask how many boxes were harvested. To decrease error, rather than asking the user to type a number the user simply selects from a list numbered 20 – 1.

This final form is designed not to

record block information but just to record the information on paper slips. I don't expect it to be 100% reliable. It will provide a check when an error arises on paper slip. Often it is easy to find the error. Grower Joe had three loads of grapes and you only have two slips. The challenge is fixing the error. Without a secondary record, it may be difficult to determine which load was his.

The final form can be shared with any user, without access to google. The form has its own http web address that google will provide. Bookmarking a link to this web address on your smartphone or tablet is how the form becomes particularly convient. The form is shown below with the user in the process of selecting an answer for the second question:

Harvest Load Record

Record Loads while harvesting. Submission will be time stamped. Date and submissions are made in an order different from delivery.

*** Required**

Number of Boxes

Name of Processor *

✓

Growers Coop

Cott

CWC

Walkers Fruit Basket

Welchs

Other

Date of Load

Submit

Once the user submits the form the information is added to a spreadsheet, which is automatically generated and saved in your personal google.com/drive account. Obviously this is not for everybody. Certainly if you're familiar with other product offerings from Google and Microsoft Office you'll be comfortable in the Google drive environment. It may not be the best solution for every situation. Google forms in particular provide an excellent tool to gather information from reluctant record keepers that have a device with consistent web access.

Cultural Practices

Luke Haggerty, LERGP,
Viticulture Extension Associate

Pre Harvest Numbers

Luke Haggerty

Viticulture Extension Associate

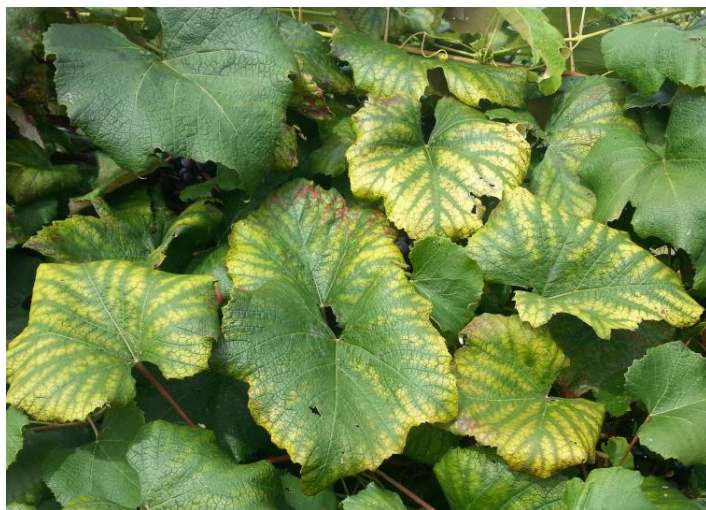
Lake Erie Regional Grape Program

Sampling data for the 9-site study collected by Kelly Link and our CLEREL staff shows another jump in brix for ‘Concord’ this past week. The averaged brix from the regions’ 80 sample sites shows that the total average jumped from 10.7 to 12.4 °brix. Even with cool temperatures in the forecast I would expect to see 1°brix increase for next week.

Following the “Concord Berry Curve” published by Dr. Bates in “Veraison to Harvest” we see that berry size continues to increase. Last week’s sample set showed the average berry size was 2.95g and this week the average berry size is 3.28g. Berry weight will be plateauing this week and depending on soil type, final berry weight should be between 3.2 and 3.4g. To follow veraison to harvest for other grape cultivars see weekly updates at <http://grapesandwine.cals.cornell.edu/newsletters/veraison-harvest>

Nutrient deficiencies are beginning to show in leaves across the region. I took this picture of magnesium deficiency in Concord on 9/10/14. The soil pH was 4.6 and the vines are begging for lime. We continued to see many growers bringing in petiole and soil samples to be tested. If you see symptoms or want to stay ahead of deficiency problems and would like your petioles or soil tested bring samples into the Cornell Lake Erie Research and Extension Laboratory (CLEREL) at 6592 West Main Road Portland, NY 14769. For information on how to collect petiole and or soils for testing go to <http://lergp.cce.cornell.edu/submission.php?id=23> . The cost per sample is \$30.00 for petiole sample (bring in 50-100 petioles) and \$17.00 for soil samples (bring in 1.5 cups of dry soil).

Lake Erie Region Average Concord Soluble Solids (BRIX)	
Location	BRIX
E. Rt5	11.5
E.Rt 20	13.1
E. Escarpment	12.5
C. Rt 5	11.8
C. Rt 20	13.3
C. Escarpment	13.3
W. Rt 5	12.7
W. Rt 20	11.9
W. Escarpment	11.7
Samples Taken on 9/8/14	



Weather Data

Lake Erie Grape Region NEWA Weather Data

Location	Date	High (F)	Low (F)	Precip.Past 7 days (in)	Precip. SEPT.Total	Total Apr GDD
North East Lab, PA	9/10/14	79	64	0.83	2.01	2226
Harborcreek, PA	9/10/14	80	65	0.87	1.83	2270
North East Escarpment	9/10/14	78	63	0.85	1.86	2200
Ripley	9/10/14	79	65	0.96	2.30	2276
Portland Route 5	9/10/14	80	65	1.26	2.13	2241
Portland CLEREL	9/10/14	78	65	0.26	1.29	2193
Portland Escarpment	9/10/14	78	63	1.11	2.09	2207
Dunkirk	9/10/14	79	66	0.88	1.34	2135
Silver Creek	9/10/14	79	65	0.87	1.44	2152
Sheridan	9/10/14	80	65	NA	NA	NA
Versailles	9/10/14	78	65	NA	NA	2084
Appleton	9/10/14	77	60	0.72	85.00	1921
Somerset	9/10/14	77	63	0.85	1.10	2096
Appleton South	9/10/14	78	60	0.78	97.00	2009

Note: NA=Sensor Malfunction

DATE/YEAR	HIGH	LOW	DAILY PRECIP	GDDs	TOTAL GDDs	APRIL	TOTAL JAN GDDs
Week of 8/27/2014	79	64.60	0.00	152.5		2072.5	2072.5
Week of 09/4/2014	82	64.40	0.21	162.5		2251.5	2251.5
Week of 09/11/2014	79.7	60.70	0.09	141.5		2373	2373
Average(from 1964)	75.9	58.30	0.80	119.8		2311.5	2340.4
Sept Precip- Wk 1=1.45" Wk 2= .51"							
Total Precip: May = 5.5" June = 5.05" July = 4.47" Aug= 2.58"							



Tim is on vacation. We will hear from him when he returns.

From Erie County PA.

Andy Muza, Extension Educator, Erie County, PA Cooperative Extension



Andy is on vacation. We will hear from him when he returns.

LERGP Website Links of Interest:

Table for: Insecticides for use in NY and PA:

<http://lergp.cce.cornell.edu/submission.php?id=69&crumb=ipm|ipm>

Crop Estimation and Thinning Table:

http://nygpadmin.cce.cornell.edu/pdf/submission/pdf65_pdf.pdf

Appellation Cornell Newsletter Index:

<http://grapesandwine.cals.cornell.edu/cals/grapesandwine/appellation-cornell/>

Veraison to Harvest newsletters:

<http://grapesandwine.cals.cornell.edu/cals/grapesandwine/veraison-to-harvest/index.cfm>

Go to <http://lergp.cce.cornell.edu/> for a detailed calendar of events.

Please remember to RSVP for those events that require one!



Lake Erie Regional Grape Program Team Members:

Andy Muza, (ajm4@psu.edu) Extension Educator, Erie County, PA Cooperative Extension, 814.825.0900

Tim Weigle, (thw4@cornell.edu) Grape IPM Extension Associate, NYSIPM, 716.792.2800 ext. 203

Kevin Martin, (kmm52@psu.edu) Business Management Educator, 716. 792.2800 ext. 205

Luke Haggerty, (llh85@cornell.edu) Grape Cultural Practices, 716.792.2800 ext. 204

This publication may contain pesticide recommendations. Changes in pesticide regulations occur constantly, and human errors are still possible. Some materials mentioned may not be registered in all states, may no longer be available, and some uses may no longer be legal. Questions concerning the legality and/or registration status for pesticide use should be directed to the appropriate extension agent or state regulatory agency. Read the label before applying any pesticide. Cornell and Penn State Cooperative Extensions, and their employees, assume no liability for the effectiveness or results of any chemicals for pesticide usage. No endorsements of products are made or implied.

Cornell University Cooperative Extension provides equal program and employment opportunities.

Contact the Lake Erie Regional Grape Program if you have any special needs such as visual, hearing or mobility impairments.

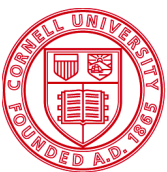
CCE does not endorse or recommend any specific product or service.

THE LAKE ERIE REGIONAL GRAPE PROGRAM at CLEREL

6592 West Main Road

Portland, NY 14769

716-792-2800



Cornell University
Cooperative Extension



College of
Agricultural
Sciences