



finger lakes vineyard update

February 14, 2013



Viticulture 2013

Hans Walter-Peterson

Inside this issue:

Enrollment Reminder	2
Bud Hardiness	3
Vineyard Survey	4
Upcoming Events	5



I just wanted to say a quick thank you to everyone who worked so hard to pull off another successful conference up in Rochester last week. Things seemed to run quite smoothly, and I heard a number of positive comments about the quality of this year's program again.

Special thanks to all of the staff at the New York Grape & Wine Foundation, especially Jennifer Cooper, for their hard work not just last week but over the past year or so that we have been planning this year's event. Charlene Ryder also deserves a major round of applause for all of her work in recruiting vendors and coordinating the Trade Show this year, which is always a monumental task.

I also want to thank all of our speakers, who brought such a wealth of information to the program this year (and to thank some of them for their patience with the delays in their travel plans after the conference).

If you have any comments or suggestions about this year's conference or trade show, please feel free to pass them along to me or the Wine & Grape Foundation staff.

finger lakes vineyard update

It's Time to Renew Your FLGP Subscription for 2013!

Hans Walter-Peterson



Subscription/enrollment forms for the Finger Lakes Grape Program were sent out to all current subscribers back in November. But we all know that life gets a little crazy around the holidays and things occasionally fall between the cracks. So here's a quick reminder to send in your form to subscribe to the FLGP for 2013.

The fee for those located in the counties that are directly served by the FLGP - Ontario, Yates, Steuben, Seneca and Schuyler - remains at \$60 for this coming year. For those outside of those counties, the fee remains at \$100 this year as well. You can also use the form to order hard copies of the 2013 edition of the NY/PA Grape Pest Management Guidelines.

The subscription forms can be downloaded from our website at <http://flg.cce.cornell.edu/enroll/>, or contact our office at 315-536-5134 to have a copy mailed to you if you prefer. Make sure to choose the form that applies to where your vineyard or business is located - either within the FLGP counties, or outside of those five counties.

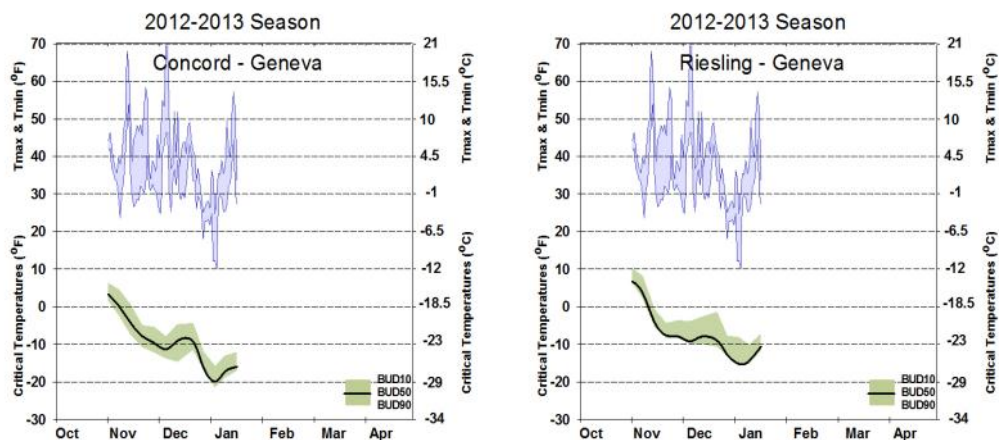
We will be assembling the 2013 mailing list at the end of February, so be sure to renew before then to make sure that you continue to receive the Vineyard Updates, the Vineyard Notes newsletter, and other benefits of being enrolled in the Finger Lakes Grape Program.

finger lakes vineyard update

2013 Bud Hardiness Monitoring

Hans Walter-Peterson

By this time, vines have reached the general level of cold hardiness that they will likely achieve this year. We collected our latest set of samples last Monday, February 4, and the results are now posted on the [website for the cold hardiness monitoring project](#). LT₅₀ values for Concord in all of our collection sites are in the -20° F neighborhood, and Riesling LT₅₀ values are all in the -11° to -14° F range (see figures), which is about where they usually bottom out each year.



As indicated on the charts here and others on the webpage, we haven't had temperatures that would give us any significant concern about bud injury to this point. But that doesn't mean growers shouldn't be checking for bud injury on their own before starting to prune, particularly their more winter tender hybrid and vinifera varieties. You can watch a couple of short videos on YouTube that we put together on how to evaluate bud injury before pruning. The first video is on [how to collect the samples](#), and the second shows [how to cut the buds and determine if extra buds should be retained during pruning](#).

finger lakes vineyard update

2011 NY Vineyard Survey Release

NY Acreage Decreases By 6%, but Finger Lakes Acreage Increases

The results from the latest vineyard survey by New York's Agricultural Statistics Service Office show that overall grape acreage in New York decreased by about 6% between 2006 and 2011. The total acreage in New York was reported to be 31,803 acres, down from 33,692 acres in 2006.

In contrast, acreage in the five primary grape-growing counties in the Finger Lakes region (Ontario, Schuyler, Seneca, Steuben and Yates) increased from 9,174 acres to 9,393 acres, an increase of about 2.4%.

County	2006 acreage	2011 acreage	% change
Ontario	418	534	+27.7%
Schuyler	987	1,133	+14.8%
Seneca	1,351	1,335	-1.2%
Steuben	1,545	1,044	-32.4%
Yates	4,872	5,348	+9.8%

Yates, Ontario and Schuyler counties saw fairly significant increases in acreage, Seneca County was just about even, and Steuben County lost about 32% of its acreage over the past 5 years. That large decrease seems a little odd to me. As we continue to work on our GIS vineyard map this winter, we'll see if our acreage numbers agree with most recent result from Steuben County, and the rest of the Finger Lakes as well. The number of grape farms (I'm not exactly sure how they define that term) also fell in the Finger Lakes region, from 281 to 249.

The other major grape growing regions in the state, in Lake Erie and Suffolk County, saw decreases in their reported acreage over the past 5 years. The Lake Erie region, including Niagara County, saw a decrease of 1,777 acres or 8.3% between 2006 and 2011. And in another bit of a surprise, the report states that the number of vineyard acres in Suffolk County out on Long Island decreased by almost 400 acres, which is 17% of the total acreage five years ago. I don't know a lot about the dynamics of the industry on Long Island, but that seems like a pretty major change for that area.

We'll be pulling some more information out from the survey over the next few weeks and will pass that along in another Vineyard Update. The full report can be found on the NY Agricultural Statistics Service website at http://www.nass.usda.gov/Statistics_by_State/New_York/Publications/Special_Surveys/FruitTree/2011%20Vineyard%20%20Survey%20Release.pdf.

finger lakes vineyard update

UPCOMING EVENTS

Eastern Winery Exposition

March 6-7, 2013

Lancaster County Convention Center

Lancaster, PA

Information about the large trade show, program and registration costs can be found at the event's website, <http://www.easternwineryexposition.com/>.

Brewing Science & Technology

Friday, March 8, 2013 8:00am to 4:45pm

This short course will include information about barley and malt, hops, brewing water, adjuncts, brew house operations, brewing yeast and brewery fermentations, maturation, finishing and beer styles. It is designed to be appropriate for people who work in commercial breweries, are home brewers or simply interested in the brewing process. Some science background is helpful.

To register, please contact Gemma Osborne at gro2@cornell.edu or 315-787-2248. Registration cost is \$100 per person.

Wineries Unlimited

March 12-14, 2013

Greater Richmond Convention Center

Richmond, VA

The grand-daddy of Eastern wine & grape trade show events. Exhibitor, program and registration information can be found at <http://www.wineriesunlimited.com/>.

finger lakes vineyard update

Got some grapes to sell? Looking to buy some equipment or bulk wine? List your ad on the [NY Grape & Wine Classifieds website](#) today!

Become a fan of the [Finger Lakes Grape Program on Facebook](#), or follow us on [Twitter \(@cceflgp\)](#). Also check out our website, "The Grape Lakes – Viticulture in the Finger Lakes" at <http://flg.cce.cornell.edu>.

Finger Lakes Vineyard Update is an e-mail newsletter produced by the Finger Lakes Grape Program and sent out by subscription. For subscription information, please call us at 315-536-5134 or look for subscription forms at <http://blogs.cornell.edu/flgp/enroll/>.

Cornell University Cooperative Extension provides equal program and employment opportunities. CCE does not endorse or recommend any specific product or service. This program is solely intended to educate consumers about their choices. Contact CCE if you have any special needs such as visual, hearing or mobility impairments.