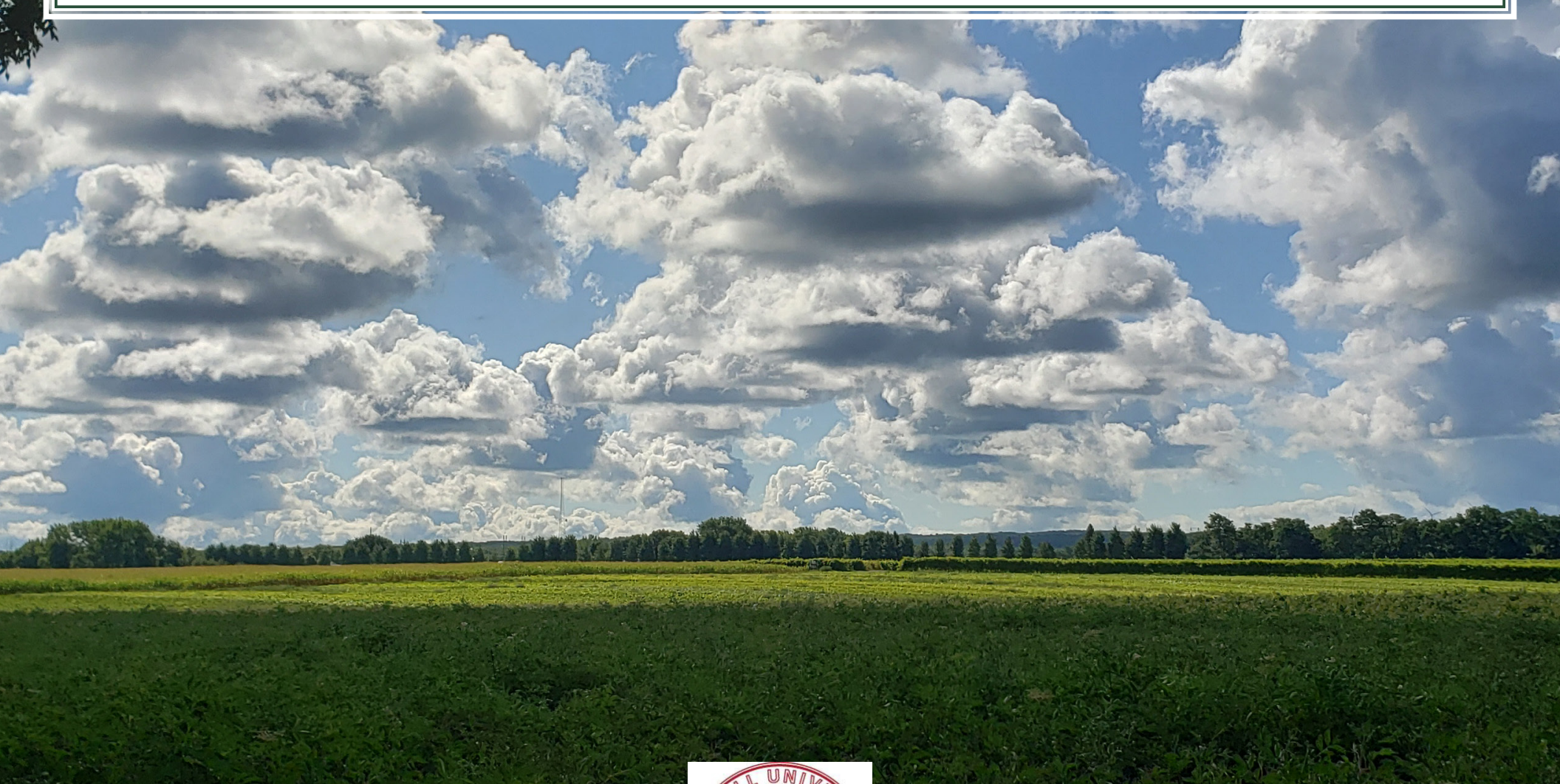
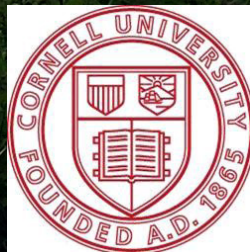


LERGP Vineyard Planning Calendar 2026



Cornell Cooperative Extension
Lake Erie Regional Grape Program



PennState Extension

Reach out to us:

Contact Information:

Jennifer Phillips Russo - LERGP Viticulture Specialist:

jjr268@cornell.edu

Cell: (716) 640-5350

Megan Luke- Penn State Extension Viticulture & Tree Fruit Educator

mfl5873@psu.edu

Cell (716) 397-9674 Office (814) 825-0900

Andrew Holden- LERGP Business Management Educator

azh6192@psu.edu

Cell (716)-640-2656 Office (716) 792-2800 ext 202

Kim Knappenberger – LERGP Extension Specialist

ksk76@cornell.edu

Kate Robinson – Administrative Assistant

kjr45@cornell.edu

LERGP web-site: lergp.cce.cornell.edu



Brought to you by The Lake Erie Regional Grape Program in Partnership with Cornell University, Penn State University, Erie County NY, Cattaraugus County NY, Chautauqua County NY, Niagara County NY, and Erie County PA.

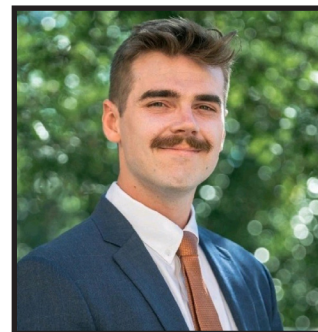
The
LERGP
Team



Jennifer Phillips Russo



Megan Luke



Andrew Holden



Kim Knappenberger



Spotted Lanternfly- See it, squish it, report it!



Report It!

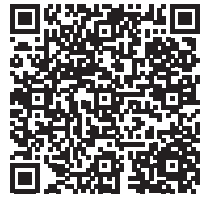
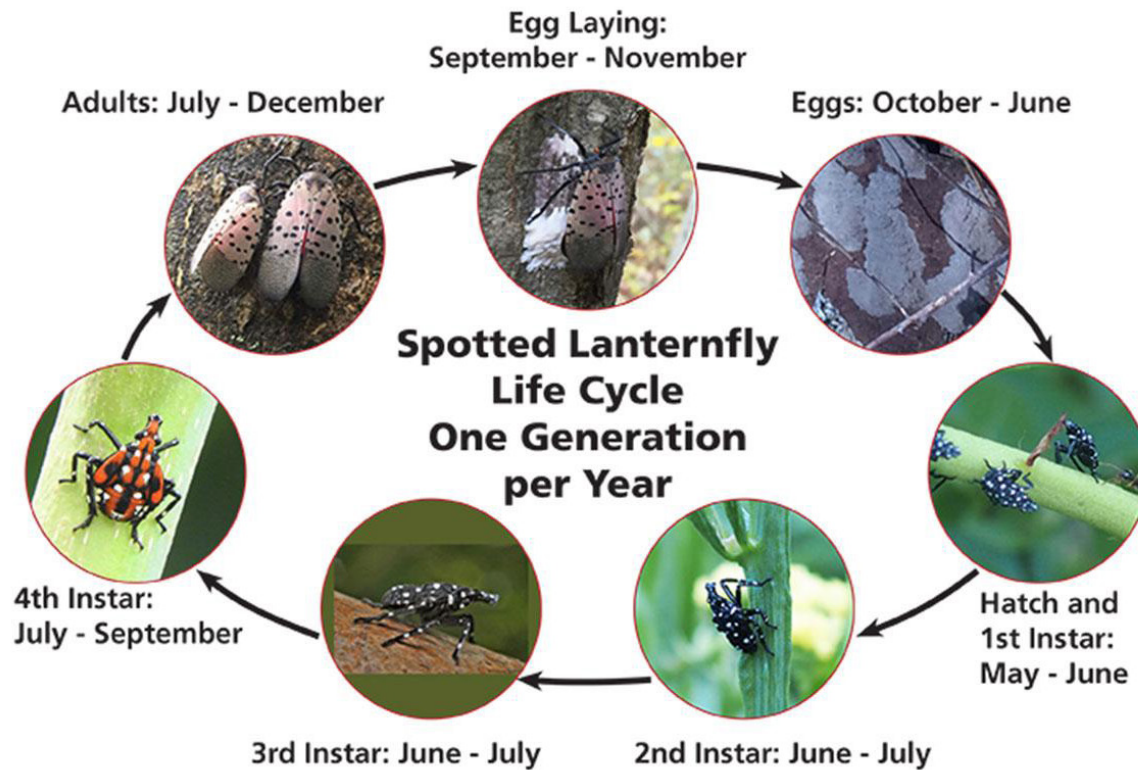
Send the information to New York State Department of Agriculture and Markets using the Spotted Lanternfly Sighting Report form.

Note Location

Note the location (street address and zip code, intersecting roads, landmarks, or GPS coordinates).

Take Pictures

Take pictures of the insect, egg masses, or infestations. If possible, collect the insect. Put it in a bag and freeze it or put it in a jar with rubbing alcohol or hand sanitizer.



Cornell CALS
NYSIPM Web-site



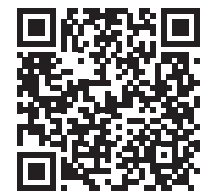
NYS Dept. of
Agriculture & Markets



Pennsylvania Dept. of Agriculture



Penn State University



JANUARY

Viticulture

Pruning Work

- Record Pruning Weights capturing variation from low, medium, and high performing vines
- Utilize the cold hardiness prediction model to track vine cold hardiness as a risk management tool for pruning.

Brush pulling

Vinifera growers may want to delay pruning until late winter or early spring to evaluate winter bud injury; large acreage consider double pruning.

IPM

Pesticides - Store pesticides according to label requirements; Check/Clean/Organize storage area; Pesticide inventory; Order/Purchase pesticides; Review pesticide labels. Update record books and signage as required by the NYS DEC and PDA.

Check condition of respirators, cartridge inventory, schedule respiratory fit test as needed

NEWA – Familiarize yourself with components of system to find nearest weather station, weather records, GBM and SLF model, and disease models. Reach out for assistance to Kim at LERGP to learn more.

Pruning- Remove old rachises & mummies from trellis, prune out dead & diseased canes (canes with lesions)

Business Management

Use the new year to get organized for the future of your operation:

Consider holding regular staff meetings with family members and employees in the new year to discuss farm plans and set priorities for the next weeks/months.

Consider discussing succession/transition planning and how to make a gradual transition.

Plan to get all tax & payroll records summarized and to your tax advisor by 1/31

Federal 943 due

W-2 and 1099 deadlines

Contact Andrew Holden for more information

January 2026

Sun

Mon

Tue

Wed

Thu

Fri

Sat

Register for Winter Conference - scan the QR code to register.



1

2

3

4

5

6

7

8

9

10

11

12

13

14

15

16

17

Jan 15, 2026 - Deadline for estimated tax payment for the 2025 tax year (Form 1040-ES).

18

19

20

21

22

23

24

25

26

27

28

29

30

31

<https://lergp.com/calendar-resources>



FEBRUARY

Pruning Work

- Record Pruning Weights capturing variation from low, medium, and high performing vines
- Tying Canes to trellis
- Bud Hardiness- assess bud damage
- Remove old rachises & mummies from trellis, prune out dead & diseased canes (canes with lesions) and remove from vineyard as best as you can to reduce inoculum.

Viticulture

Trellis Repair

Vinifera growers may want to delay pruning until late winter or early spring to evaluate winter bud injury; large acreage consider double pruning.

MyEV

- Utilize vineyard maps to determine soil and tissue sampling and variable rate nutrition application plans.
- Create and update data collectors in MyEV or reach out to Jennifer for assistance.

IPM

Review - Pest Guide, utilize scouting records and last year's spray records to finalize ipm and pesticide application program.

NEWA – Familiarize yourself with components of system to find nearest weather station, weather records, GBM and SLF model, and disease models. Reach out for assistance to Kim at LERGP to learn more.

Spotted Lanternfly - Scout for egg masses. Contact anyone on the LERGP Extension Team if you find egg masses.

Pesticides- Check/Clean/Organize storage area; Conduct pesticide inventory; Order/Purchase pesticides

MyEV- Use maps to select areas of high pressure to develop scouting plans, monitoring efforts, including monitoring trap locations for SLF.

Business Management

Purchase plan for Chemicals, Fertilizer and Fuels

- Assess carry-over from prior year.
- Time purchases to minimize exposure to price volatility.
- Pre-order specialty chemicals to ensure adequate supply.

Climbing food costs have levelled off in the end of 2024, but prices remain high from the rapid increases following the pandemic. Consumers are cutting back on some goods and switching to other store branded goods. The effects of high cost should soften as wages catch up with inflation.

****Jan 15, 2026 - Deadline for estimated tax payment for the 2025 tax year (Form 1040-ES).**

February 2026

Sun

Mon

Tue

Wed

Thu

Fri

Sat

1

2

3

4

5

6

7

Feb 2, 2026 - Due date to furnish Forms W-2 and most Forms 1099 to recipients for the 2025 tax year.

8

9

10

11

12

13

14

15

16

17

18

19

20

21

22

23

24

25

26

27

28

Register for Winter Conference - scan the QR code to register.



MARCH

Viticulture

Renewal work

- Tying Canes to trellis
- Replace or map missing vines with dippers (layering) or planting new vines in spring. This is typically the 2nd or 3rd largest expense at \$130 per acre.

Bud Hardiness (De-acclimation)

- Assess bud damage

Check for Vine bleeding (sap leaking from cut canes)

Trellis Work

Prune vinifera vines before bud swell. Select canes/spurs with good wood maturation approximately pencil-width diameter.

Review your potential frost mitigation plan for readiness including noting areas of high cover crop debris in frost prone areas.

IPM

Spotted Lanternfly - Reference your Spotted Lanternfly Pocket Guide to confirm seasonal scouting and management plans.

Review - Pesticide labels, print new SDS and labels as needed, and check for EPA mitigation requirements on **Bulletins Live! Two**

NEWA – Familiarize yourself with components of system to find nearest weather station, weather records, GBM and SLF model, and disease models. Reach out for assistance to Kim at LERGP to learn more.

Plan - Obtain your New York and PA pest management guidelines and review pest management strategy for upcoming season by variety/block and previous problems, make adjustments for chemical and labor constraints.

Business Management

Saving for Retirement:

- Decide how much to contribute to an IRA (Roth and/or traditional) for the coming year and set goals.
- Consider Social Security and implications of your taxable income in your business.
- Offering a savings plan or employer match plan for employees could attract/retain workers.

New York Investment tax credit (ITC) - If you are an eligible farmer, you may qualify to claim 20% of the investment credit base on qualifying property (i.e. buildings or equipment) placed in service on or after 4/1/2022.

Feb 2, 2026 - Due date to furnish Forms W-2 and most Forms 1099 to recipients for the 2025 tax year.

March 2026

Sun	Mon	Tue	Wed	Thu	Fri	Sat
1	2	3	4	5	6	7
	March 2, 2026 - File 2025 tax return (Form 1040) and pay all tax due to avoid a penalty if the January 15 estimated tax payment was not made.					
8	9	10	11	12	13	14
15	16	17	18	19	20	21
	March 16, 2026 - File 2025 calendar-year business tax returns for S corporations (Form 1120-S) and partnerships (Form 1065).			LERGP Winter Grower Conference		
22	23	24	25	26	27	28
29	30	31				
Register for Winter Conference - scan the QR code to register.						

<https://lergp.com/calendar-resources>



APRIL

Viticulture

Bud Hardiness (De-acclimation) assess bud damage

- Attempt to avoid frost injury to vine tissue
- Mow cover crops to allow air drainage, if frost is a significant concern

Tying of canes to trellis

Hill Down to expose graft union

Prune vinifera vines before bud swell. Select canes/spurs with good wood maturation approximately pencil-width diameter.

Record/map - missing vines per block. Replace missing vines with dippers (layering) or planting new vines in spring.

Prepare nutrient amendment plan to time application two weeks before bloom and up to four weeks post bloom for rapid shoot growth and consider variable rate where applicable

IPM

Spotted Lanternfly - reference your Spotted Lanternfly Pocket Guide to confirm seasonal scouting and management plans.

Sprayer(s) – Maintenance & Calibration. Schedule sprayer calibration appointment with Megan Luke

BUD SWELL –

- Grape flea beetle/climbing cutworms. Scout frequently during the bud swell stage for feeding injury.
- If bud injury levels are above 2% then apply an insecticide
- Make notes of phomopsis or crown gall while scouting

Weed spray - Apply preemergence herbicides in April or May.

Business Management

Cost of Spotted Lanternfly

- The additional cost of SLF can only be estimated in the Lake Erie grape belt, as we don't yet know exactly how this pest will present itself.
- Largest cost will come from labor and material to run additional sprays (2-4 additional estimated)
 - In scenarios our team has developed, additional material cost ranged from \$16.85 to \$56.52 per acre
 - Average cost for the labor and equipment to perform a spray is over \$14 per acre
 - Consider preparing by pricing chemicals before you need them and investing in upgrading your spray equipment to be more efficient.

April 2026

Sun Mon Tue Wed Thu Fri Sat

				1	2	3	4
5	6	7	8	9	10	11	
12	13	14	15	16	17	18	
19	20	21	22	23	24	25	
26	27	28	29	30			

How to Get Certified Course

NYSDEC License Exam

April 15, 2026 - File 2025 individual (Form 1040) and C corporation (Form 1120) tax returns and pay any tax due.

2025 Bud-break at NE Lab

2025 Bud-break at CLEREL



<https://lergp.com/calendar-resources>

Viticulture

RECORD your bud break date per block/variety

Shoot Thinning to balance vine health/sustainability soon after bud break and before 18" shoot growth

Hill down

Replant as necessary

Shoot Positioning

Nitrogen applications from 2 weeks before bloom up to 4 weeks after

Efficiency of application of other nutrients is less studied in no till systems.

- Urea
- Potash
- MAP

Week of 10 - 17th - 3" - 5" Spray

- EBDC (Mancozeb or similar)

Week of 20 - 27th - 10" - 12" Spray

- EBDC (Mancozeb or similar)
- Powdery Mildew - Consider inexpensive materials

Sprayer(s) – Maintenance & Calibration.
Adjust spray volume and direction as canopy increases.

Check - Adjust pH of water in tank according to labels prior to adding pesticides.

Scout - vineyard blocks for insects, diseases, weeds at least weekly throughout the season. Return to known areas of pest pressure, select 1 or 2 random locations to scout.

BUD SWELL– Grape flea beetle/climbing cutworms.

Scout frequently during the bud swell stage for feeding injury.

3 to 5 inch SHOOT GROWTH

Phomopsis Cane and Leaf Spot - Fungicide application for management of rachis, shoot & leaf infections. Critical spray for rachis infections.

Powdery Mildew – Vitis vinifera varieties – Do not delay fungicide application beyond this stage.

Banded Grape Bug & Lygocoris inconspicuus – start scouting vineyards for nymphs.

10 to 12 inch SHOOT GROWTH

Phomopsis - Fungicide application for management of rachis, shoot and leaf infections.

Powdery Mildew – Vitis vinifera/highly susceptible hybrid varieties – **DO NOT** delay fungicide application beyond this stage.

Black Rot – Fungicide application required in areas of high pressure in previous year.

Downy Mildew–Higher inoculum levels likely this season, becomes active about 10 inch shoots.

Eutypa Dieback – Scout and remove infected canes/cordons.

Banded Grape Bug & Lygocoris inconspicuus – continue scouting for nymphs

May 2026

Sun	Mon	Tue	Wed	Thu	Fri	Sat
					1 Avg Budbreak at CLEREL & NE Lab	2
Scout for Spotted Lanternfly - hatch and first instar; egg masses						
3	4	5	Coffee Pot Meeting	6	7	8 9
10	11	12	Coffee Pot Meeting	13	14	15 16
avg 3"-5" Spray Timing- May 10-17						
17	18	19	Coffee Pot Meeting	20	21	22 23
average 10"-12" Spray timing May 20-27						
24	25	26	Coffee Pot Meeting	27	28	29 30
average 10"-12" Spray timing May 20-27						
31						



<https://lergp.com/calendar-resources>

JUNE

Record

- Wild grapevine bloom in GBM model on NEWA website
- Your bloom date (50% cap fall) per block/variety

Fruit set – Count clusters/vine and berries/cluster

- Cell division occurs (avoid vine stress)
- Cluster thinning to adjust crop level for vine balance, health, and sustainability
- Bloom petioles from leaf opposite flower cluster (useful as follow-up to nutrient adjustments during the previous season)

Terminate cover crops to avoid competition

- Immediate impact on yield (same as weed pressure) Observed more than 20% decrease in a dry year.
- Impact future potential yield (vine size)

Shoot positioning

Leaf pulling immediately after fruit set

Suckering

IMMEDIATE PRE-BLOOM – (just before blossoms open)

IPM

- Immediate pre-bloom spray - prior to trace bloom
 - Downy mildew materials with newer modes of action
 - EBDC
- **Diseases - CRITICAL STAGE** for management of Phomopsis (fruit & rachis infections), black rot, downy & powdery mildew. Apply fungicides. **DO NOT delay sprays beyond this stage.**
- **Rose Chafer and Phylloxera (leaf forms)** – scout and apply insecticides if needed.
Consult- New York and Pennsylvania Pest Management Guidelines for Grapes

BLOOM Fungicide application

- **Botrytis** – fungicide protection important on tight – clustered susceptible wine varieties in wet seasons.

1st POSTBLOOM fungicide application (10-14 days after Immediate Prebloom spray).

- **Diseases - CRITICAL STAGE** for all major diseases, apply fungicides.
- **Grape Berry Moth(First generation)** – An insecticide application for the First Generation of Grape Berry Moth should be based on history of GBM problems per block, risk assessment(e.g., vinifera blocks) and scouting results.
- **Grape Rootworm Adults** – Scout

for chain-like feeding on leaves. Apply 2ee insecticide if needed

Business Management

Other diseases and insects can cause significant economic damage if not controlled but are typically inexpensive to control when pressure is moderate or low.

Regardless of variety, in the East, profits are driven by prevention of major diseases.

The end of June marks the half-way point of the calendar year. Have you been meeting your financial/management goals set at the start of this year? Have you been having regular management meetings? What do you need to do to meet your goals going forward? Use this time to prepare for the busy harvest season.

June 2026

Sun	Mon	Tue	Wed	Thu	Fri	Sat	
		1	2 Coffee Pot Meeting	3	4	5	6
7	8	9	10 Coffee Pot Meeting	11 Avg Bloom date at CLEREL	12	13 2025 Bloom date at CLEREL	
14 Avg Bloom date at NE Lab	15	16 2025 Bloom date at NE Lab	17 Coffee Pot Meeting	18	19	20	
21	22	23	24 Coffee Pot Meeting	25	26	27	
28	29	30			https://lergp.com/calendar-resources		

Viticulture

Cell division continues Stage I of berry growth (*avoid vine stress*)

Crop Estimation and Thinning

- Crop Estimation 30 Days Post Bloom-consult LERGP for chart
- Crop Thinning where necessary
- Canopy hedging

Stage II of berry growth Lag Phase for seed development

Plan for Cover Crop Planting

Suckering, Weed Control, and Late Leaf Pulling (*around bunch closure to remove any regrowth*)

Crop thinning where necessary i.e. Overcropped? Crop thin to reach minimum Brix levels and avoid reduction in vine size.

IPM

SCOUT - vineyard blocks for insects, diseases, weeds and nutritional problems at least weekly throughout the season. Apply pesticides only if needed.

2nd POSTBLOOM fungicide application (10-14 days after 1st Postbloom spray)

- **Diseases** – A 2nd Postbloom fungicide spray should be applied (within 14 days of 1st Postbloom spray) to ensure that fruit is protected from infection throughout the susceptible period for black rot, powdery and downy mildew.

Grape Berry Moth (Second Generation) -Time insecticide application to GBM Model in NEWA based on risk assessment and/or scouting results

Insects(feeding on leaves) - Scout for Japanese Beetles, Grape Leafhopper, Grape Rootworm adults, and SLF

Botrytis – fungicide application just before bunch closure on tight clustered wine varieties.

Weed Management- Spot spray if needed.

Business Management

Buy cover crop seed

- Cost will vary from \$10 - \$45 per acre based on goals, soil conditions and seed variety selected
- Inexpensive multi-species is generally recommended
- Be flexible with grass seed selection if market for some grasses and grains remain volatile. Continue to select grasses that meet your cover crop goals.
- Biomass will be higher if seed selection is appropriate for conditions and the site.

Small to medium cropload? The cost of destructive crop estimation is covered by an increased efficiency in harvest scheduling and logistics.

July 2026

Sun

Mon

Tue

Wed

Thu

Fri

Sat



<https://lergp.com/calendar-resources>

Coffee Pot Meeting

1

2

3

4

5

6

7

Coffee Pot Meeting

8

9

10

11

12

13

14

Coffee Pot Meeting

15

16

17

18

19

20

21

Coffee Pot Meeting

22

23

24

25

26

27

28

Coffee Pot Meeting

29

30

31

Start Cover Crop Planting

AUGUST

Plant cover crops early in the month.

Stage III of berry growth, Veraison, or cell expansion, sugar accumulation, and acid metabolism

Record your Veraison date (5% color on majority of clusters) per block/variety

Make Observations for Nutrient Deficiencies

Veraison Petioles (ideal time for routine petiole sampling)/Soil Samples

Bird Control at Veraison

Crop thin vinifera reds around veraison to encourage uniform ripening.

IPM

SCOUT - vineyard blocks for insects, diseases, weeds and nutritional problems at least weekly throughout the season. Apply pesticides only if needed.

Powdery Mildew – Foliage of highly susceptible varieties will require protection throughout the season.

Botrytis – veraison fungicide application on susceptible wine varieties (tight clustered *Vitis vinifera* and French hybrids)

Grape Berry Moth (Third Generation) - Apply insecticide according to the GBM Model based on risk assessment and/or scouting results. If 1620 GBM Degree Days occur prior to August 5, multiple additional applications may be needed in high pressure vineyards.

Grape Leafhopper – scout for adults/nymphs and leaf stippling.

Weed Management- Spot spray if needed.

Business Management

Lower prices/yields, and rising input costs can reduce your cash reserves, insurance premiums can impact normal income flow. Monitor your cash flow by preparing cash flow reports that help you manage funds for debt service, family living expenses, and other cash obligations. Compare actual cash flow with your budgeted projections and identify any discrepancies. Have plans in place to address any potential cash shortfalls. Regularly follow up with your lender to review and adjust your line-of-credit requirements as needed.

August 2026

Sun	Mon	Tue	Wed	Thu	Fri	Sat
						1
2	3	4	5	6	7	8
Start/Continue Cover Crop Planting						
9	10	11	12	13	14	15
16	17	18	19	20	21	22
23	24	25	26	27	28	29
30	31					

2025
Veraison at
CLEREL

Average Veraison at
CLEREL & NE Lab

2025
Veraison at
NE Lab



<https://lergp.com/calendar-resources>

SEPTEMBER

Viticulture

Observations for Nutrient Deficiencies
Test Juice Soluble Solids (Brix)
Plan Harvest Accordingly
Acclimation process begins
Harvest
Disease/weather pressure and sugar accumulation dictates harvest.

Record:

- Berry curve info
- Brix accumulation info

Vinifera growers watch weather forecast for rain. If raining, then harvest earlier to potentially reduce problems with bunch rots and berry swelling/splitting. If sunny, then let fruit hang to reach optimum fruit quality.

Record or utilize MyEV to collect visual observations such as nutrient deficiencies, potential virus locations, gopher holes, broken posts and wires, missing vines, and other vineyard maintenance tasks. MyEV can also be used to record Juice Soluble Solids (Brix) and Berry Curve information to plan harvest. Contact Jennifer for assistance.

IPM

Powdery Mildew – Foliage of highly susceptible varieties will require protection throughout the season.

Botrytis – Preharvest fungicide application on susceptible wine varieties.

Grape Berry Moth (Fourth Generation) – If 1620 GBM Degree Days occur prior to August 5, multiple additional applications may be needed in high pressure vineyards. Be aware of insecticide preharvest intervals.

Fruit Flies/ Sour Rot – Control fruit flies, which spread specific microbes that cause sour rot, (starting around 15 Brix) on susceptible wine varieties. Consult- *New York and Pennsylvania Pest Management Guidelines for Grapes*.

Scout for adult Spotted Lanternfly and start looking for egg masses at the end of the month.

Business Management

Prepare for a safe and well-organized harvest:

- **Meet with workers and family to discuss plans for harvest.**
- **Make sure everyone is comfortable in suggesting ways to improve efficiency.**

Check if equipment needs to be repaired and if all safety features are working properly:

- **SMV signs and lights must be visible and operational for road transportation.**
- **Have a plan for emergencies or breakdowns and share with everyone working during harvest**

September 2026

Sun

Mon

Tue

Wed

Thu

Fri

Sat

		1	2	3	4	5
6	7	8	9	10	11	12
13	14	15	16	17	18	19
20	21	22	23	24	25	26
27	28	29	30			



<https://lergp.com/calendar-resources>

OCTOBER

Viticulture

HARVEST

RECORD:

- Frost freeze date (average)
- Berry curve info
- Final Yields and Brix/Block
- Final berry weights

Record or utilize MyEV to collect visual observations such as nutrient deficiencies, potential virus locations, gopher holes, broken posts and wires, missing vines, and other vineyard maintenance tasks. MyEV can also be used to record Juice Soluble Solids(Brix) and Berry Curve information to plan harvest. Contact Jennifer for assistance.

IPM

RECORD

- Insect/Disease/Weed and the observed dates on your vineyard maps.
- Your assessment of successes and failures in your ipm plan such as equipment and pesticide efficacy: Were you happy with your coverage? Did you make mid season changes? Nozzle changes?
- Make note of successful or problematic tank mixes or pesticide failures in the field and use to develop next season spray program.
- Review scouting records and record notes of unseasonably high pest pressure on vineyard maps.

Equipment Maintenance – Prepare for winter storage

Fall Herbicide Application-Note where perennial weed pressure is for preemergent applications in the spring and consider using MyEV to map it.

Scout for Spotted Lanternfly adults and egg masses.

Business Management

Collect data to compare blocks and year to year

- Track production and quality components by block/variety to ensure adequate crop insurance records.
- Track labor hours and days of rest for harvest efficiency and legal compliance. Operational efficiency is key to profitability during harvest.

October 2026

Sun

Mon

Tue

Wed

Thu

Fri

Sat



<https://lergp.com/calendar-resources>

1

2

3

4

5

6

7

8

9

10

11

12

13

14

15

16

17

18

19

20

21

22

23

24

25

26

27

28

29

30

31

NOVEMBER

'Hill up' to protect vulnerable graft union from cold injury

Lime applications

Vine dormancy begins after leaf fall

Prune after leaf fall

Record or utilize MyEV to collect visual observations such as nutrient deficiencies, potential virus locations, gopher holes, broken posts and wires, missing vines, and other vineyard maintenance tasks. MyEV can also be used to record Juice Soluble Solids(Brix) and Berry Curve information to plan harvest.

Contact Jennifer for assistance.

IPM

RECORD

- Insect/Disease/Weed and the observed dates on your vineyard maps.
- Your assessment of successes and failures in your ipm plan such as equipment and pesticide efficacy: Were you happy with your coverage? Did you make mid season changes? Nozzle changes?
- Make note of successful or problematic tank mixes or pesticide failures in the field and use to develop next season spray program.
- Review scouting records and record notes of unseasonably high pest pressure on vineyard maps.

Equipment Maintenance – Prepare for winter storage

Fall Herbicide Application-Note where perennial weed pressure is for preemergent applications in the spring and consider using MyEV to map it.

Pesticides - Store pesticides according to label requirements; Check/Clean/Organize storage area.

Scout for SLF egg masses on posts and vine trunks. Contact the LERGP team if any are found.

Business Management

Review Crop Insurance Selections:

- **The crop insurance sales closing date and reporting deadlines for grapes in New York and Pennsylvania is November 20th.**

Tax planning:

- **Before the end of the year, follow up on tax management strategies recommended by your tax preparer.**
- **Information can be found in IRS publication 225 Farmer's Tax Guide at <http://www.irs.gov/pub/irs-pdf/p225.pdf>.**

November 2026

Sun

Mon

Tue

Wed

Thu

Fri

Sat

1

2

3

4

5

6

7

8

9

10

11

12

13

14

15

16

17

18

19

Crop
Insurance
Deadline
11/20

20

21

22

23

24

25

26

27

28

29

30



<https://lergp.com/calendar-resources>

DECEMBER

Viticulture

Pruning Decisions and Action

- Prune after leaf fall
- Record Pruning Weights to capture variability
- Brush Pulling
- Check our website to watch recorded podcasts
- Remove old rachises & mummies from trellis, prune out dead & diseased canes (canes with lesions) and remove from vineyard the best you can to reduce inoculum.

Create and update data collectors to record vineyard information in MyEV or reach out to Jennifer for assistance.

IPM

Spotted Lanternfly - Scout for SLF egg masses on posts and vine trunks. Contact the LERGP team if you find egg masses.

Pesticides-

- Store pesticides according to label requirements; Check/Clean/Organize storage area.
- Develop next season spray program with research based guidance.
- Identify and determine management strategies for any new pests.

Check - Personal Protective Equipment (PPE) supplies & replace if needed.

Business Management

- Develop a strategy for the coming year
- Plan purchases to operate efficiently in 2026

Take advantage of year-end tax management strategies, make purchases before December 31st. Tax management tools are used to level year-to-year swings in reported income and subsequent taxes paid, lowering total taxes paid. All decisions should be made to improve the long-term profitability of the businesses.

December 2026

Sun

Mon

Tue

Wed

Thu

Fri

Sat



<https://lergp.com/calendar-resources>

1

2

3

4

5

6

7

8

9

10

11

12

13

14

15

16

17

18

19

20

21

22

23

24

25

26

27

28

29

30

31

**Happy Holidays to you and yours
from the LERGP team.**

THE LAKE ERIE REGIONAL
GRAPE PROGRAM at CLEREL
6592 West Main Road
Portland, NY 14769
716-792-2800