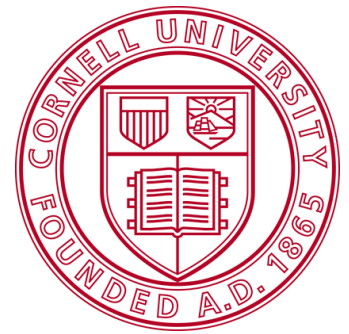


Cornell Cooperative Extension Finger Lakes Grape Program



Q4 2023

Quarterly Highlights



“After harvest, growers hill soil over the base of the vines to protect latent buds in case winter cold injures the existing trunks. This allows new trunks to be trained up to replace the injured ones and get the vines back into production more quickly.”

Program Highlights

·Planning for this winter's B.E.V. NY conference kicked into high gear in November and December. The conference has been shortened to a two-day event, March 5 -6, and will be located back in the Finger Lakes region at the Hotel Canandaigua in Canandaigua, NY. The conference is being planned in cooperation with the Cornell Craft Beverage Institute and the NY Wine & Grape Foundation.

·The New York Wine & Grape Foundation has received funding to conduct the first statewide vineyard survey in New York since 2011. The FLGP has been involved in vineyard surveys and mapping in the past, on both a regional and statewide scale, and is participating in the steering committee for this new effort. The survey will be released to the industry in early 2024.

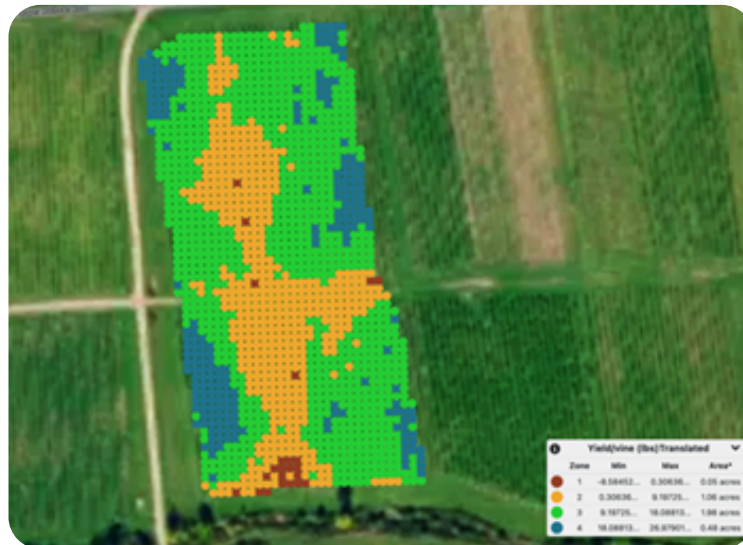
·Weather in October was almost ideal for the Finger Lakes grape industry, and for the FLGP as we wrapped up this year's field trials. Two of our primary projects this year were focused on managing sour rot, an ongoing priority for our program, and introducing growers to accessible and user-friendly digital ag technology and tools to help them improve their vineyard management.

Wrapping up 2023 Field Projects

October's weather was almost ideal for harvest, with very little rain and moderate temperatures dominating most of the month. This also made it easy for us to finish collecting data for our field projects this year.

This was the final season for our project evaluating a cuticle enhancing product called 'Parka' to reduce sour rot development at harvest. The dry conditions during much of harvest kept disease pressure relatively low, which is good for the growers but not so good when you're studying grape diseases. Our results from 2023 were similar to past seasons, however, which showed that Parka had relatively little impact on sour rot development in our trial locations in the Finger Lakes and on Long Island. My co-PI, Alice Wise, and I have both come to the conclusion that we cannot recommend the product to our growers based on these results.

We continued our work on a USDA project, in cooperation with Terry Bates and Jennifer Russo in the Lake Erie region, that is bringing new digital viticulture tools to growers in both of our regions. In May, June, and August we scanned five Finger Lakes vineyards using NDVI sensors, which measure the relative density of the grapevine canopy. These scans are done using a GPS-enabled data logger, and the data is uploaded to the MyEV mapping tool to create spatial maps of the variation of vine growth in the vineyard. Based on these maps, we harvested fruit from several vines to look for correlations between the NDVI data and field data in order to convert the maps to ones that represent viticultural information (in this case, yield). We found pretty good correlations between both the June and August scans and our yield data, depending on which farm we looked at. This mapping tool allows growers to better understand the variation in the vineyards, look for spatial patterns of that variation, and then make management decisions about how they want to manage that variation to help them meet their goals for their vineyards.



B.E.V. NY 2024 Planning



Planning for this year's B.E.V. NY conference got started last summer, but activity greatly increased towards the end of 2023. After last year's move to Syracuse, it was decided to return the Finger Lakes region and hold the conference at the new Hotel Canandaigua on Canandaigua Lake. We have revised the format for the conference, reducing from a three-day event down to two days, and also creating more sessions focused on topics and issues that are of interest to both grape growers and winemakers. The Finger Lakes Grape Program, the Cornell Craft Beverage Institute, and the NY Wine & Grape Foundation are all involved in planning the conference again this year, and we greatly appreciate their efforts.

The conference will take place Tuesday, March 5 - Wednesday, March 6.

New York Statewide Vineyard Survey

The NY Wine & Grape Foundation secured funds to conduct the first statewide vineyard survey for New York state since 2011. Hans Walter-Peterson, viticulture extension specialist with the FLGP, is a member of the committee that reviewed applicants for the project and is now guiding the survey process. A local company, Agency 29 based in Geneva, NY, is the lead contractor to conduct the survey. As part of the survey, they will be working with a California-based company called Deep Planet, which uses technologies and tools to identify vineyards from satellite images. This will potentially help to identify vineyards that we do not have information on and hopefully contact those individuals to get their information.

The survey will collect information not only about vineyard acreage across the state, but also what varieties are planted in vineyards as well. This level of detail is not included in the USDA's Ag Census that is conducted every five years, and it is important information for the industry to have to better understand how the grape and wine industry is changing over time.

The survey will be conducted over two years, with initial data collections and reports in 2024 and then subsequent follow-up work to fill in gaps in 2025.

Cornell Cooperative Extension Finger Lakes Grape Program

Hans Walter-Peterson - Team Leader
Donald Caldwell - Viticulture Technician
Ellen Coyne - Field Technician
Brittany Griffin - Team Coordinator
<https://blogs.cornell.edu/flxgrapes/>

The Finger Lakes Grape Program is a Cornell Cooperative Extension partnership between Cornell University and the Cornell Cooperative Extension Associations in Ontario, Seneca, Schuyler, Steuben, Wayne and Yates Counties.



"Cornell Cooperative Extension is an equal opportunity, affirmative action educator and employer"