

Cornell Cooperative Extension Lake Erie Regional Grape Program

Third Quarter Report 2023

A cooperative program between Cornell and Penn State Universities, Cornell Cooperative Extension Associations in Chautauqua, Cattaraugus, Erie and Niagara Counties, Penn State Extension – Erie County, NYS IPM Program, National Grape Cooperative, Constellation Brands, Walker's Fruit Basket and growers of the Lake Erie Grape Industry



GiESCO 22nd Group of International Experts for Cooperation on Vitivinicultural Systems Conference

LERGP Viticulture Extension Specialist, Jennifer Phillips Russo, was on the 22nd congress of this highly successful international viticulture and enology organization planning committee. The theme of this conference was Diverse germplasm and precision technologies for varied and changing climates. The 22nd GiESCO International Meeting took place at Cornell University in Ithaca, NY from July 17-21, 2023, with well over 100 international viticulture and enologists in attendance. As part of this international conference, a tour of the Lake Erie Grape Region was orchestrated by Jennifer and approximately 40 members of the congress traveled to Chautauqua County to learn more about the breadth and global reach that our industry has.

New York State Department of Agriculture and Markets Small Grape Commodities Survey

Our team deployed pheromone traps at two nurseries and ten vineyards in Chautauqua County, NY, and monitored for three invasive species every two weeks throughout the growing season through September. We are happy to report that no target species were found.

New York Farm Viability Funded Floor Management Research

Research for nutrient and water conservation in non-irrigated juice grapes using floor management strategies continued with data collection throughout the growing season on both gravel and heavy clay soils. Weekly data collection was made throughout most of the third quarter. This data will help inform growers of what best floor management strategies to implement into their operations to increase soil and vine health.

Mycorrhizae Fungi Grant

Dr. Justine Vanden Heuvel and Jennifer Phillips Russo collaborated on a Federal Capacity Funds grant, at the urging of the industry, to study mycorrhizae fungi applications to existing and pre-plant grapevines. The inoculations have worked well at increasing mycorrhizal associations on roots and increasing petiole nutrients. However, we want to look at impact on vine growth, fruit composition, etc. I collaborated with six growers to inoculate their vines and will be conducting data collection throughout the season. During the third quarter, we collected tissue samples from both the inoculated and control vines for this research to be sent off for analysis.

Microclimate Sensor Grant

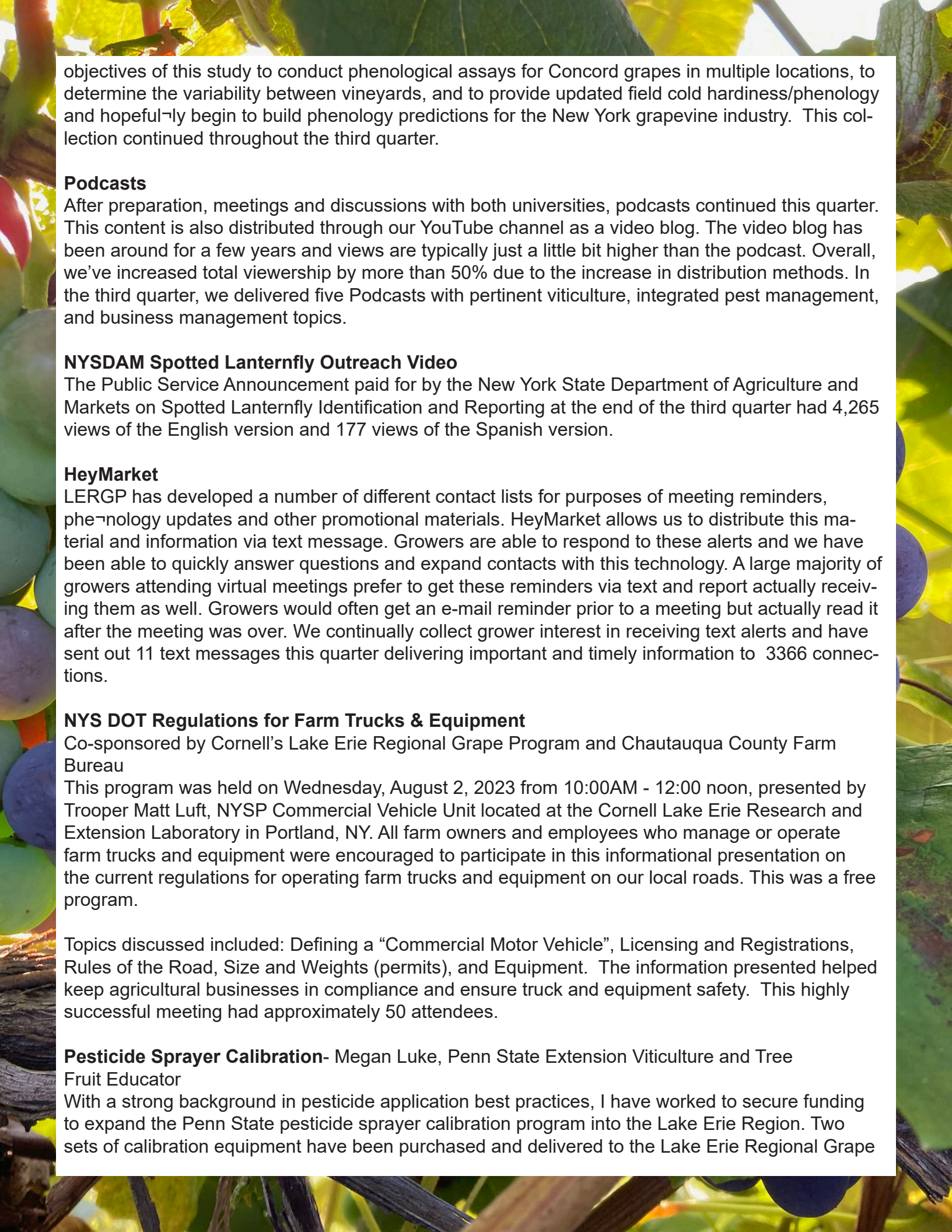
Dr. Jason Londo and Jennifer Phillips Russo collaborated on tracking grapevine cold hardiness and phenology across the region with microclimate sensors deployed in 15 grower collaborator vineyards. We are collecting data from five locations on Lake Erie, five locations located on the bench, and five locations on the escarpment. The team collects data weekly to help achieve the



Cornell University



PennState Extension



objectives of this study to conduct phenological assays for Concord grapes in multiple locations, to determine the variability between vineyards, and to provide updated field cold hardiness/phenology and hopefully begin to build phenology predictions for the New York grapevine industry. This collection continued throughout the third quarter.

Podcasts

After preparation, meetings and discussions with both universities, podcasts continued this quarter. This content is also distributed through our YouTube channel as a video blog. The video blog has been around for a few years and views are typically just a little bit higher than the podcast. Overall, we've increased total viewership by more than 50% due to the increase in distribution methods. In the third quarter, we delivered five Podcasts with pertinent viticulture, integrated pest management, and business management topics.

NYSDAM Spotted Lanternfly Outreach Video

The Public Service Announcement paid for by the New York State Department of Agriculture and Markets on Spotted Lanternfly Identification and Reporting at the end of the third quarter had 4,265 views of the English version and 177 views of the Spanish version.

HeyMarket

LERGP has developed a number of different contact lists for purposes of meeting reminders, phenology updates and other promotional materials. HeyMarket allows us to distribute this material and information via text message. Growers are able to respond to these alerts and we have been able to quickly answer questions and expand contacts with this technology. A large majority of growers attending virtual meetings prefer to get these reminders via text and report actually receiving them as well. Growers would often get an e-mail reminder prior to a meeting but actually read it after the meeting was over. We continually collect grower interest in receiving text alerts and have sent out 11 text messages this quarter delivering important and timely information to 3366 connections.

NYS DOT Regulations for Farm Trucks & Equipment

Co-sponsored by Cornell's Lake Erie Regional Grape Program and Chautauqua County Farm Bureau

This program was held on Wednesday, August 2, 2023 from 10:00AM - 12:00 noon, presented by Trooper Matt Luft, NYSP Commercial Vehicle Unit located at the Cornell Lake Erie Research and Extension Laboratory in Portland, NY. All farm owners and employees who manage or operate farm trucks and equipment were encouraged to participate in this informational presentation on the current regulations for operating farm trucks and equipment on our local roads. This was a free program.

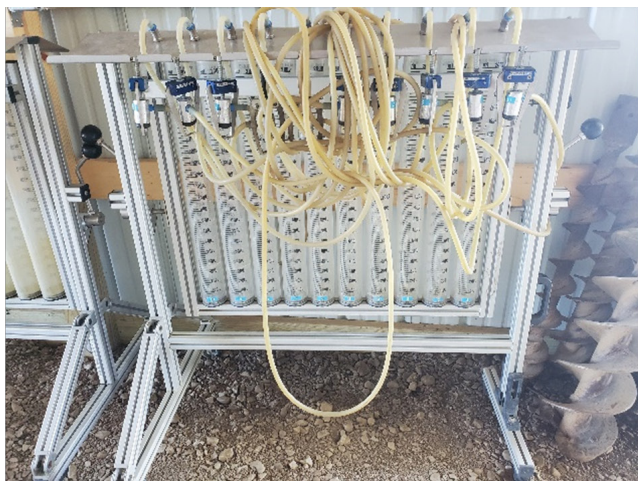
Topics discussed included: Defining a "Commercial Motor Vehicle", Licensing and Registrations, Rules of the Road, Size and Weights (permits), and Equipment. The information presented helped keep agricultural businesses in compliance and ensure truck and equipment safety. This highly successful meeting had approximately 50 attendees.

Pesticide Sprayer Calibration- Megan Luke, Penn State Extension Viticulture and Tree Fruit Educator

With a strong background in pesticide application best practices, I have worked to secure funding to expand the Penn State pesticide sprayer calibration program into the Lake Erie Region. Two sets of calibration equipment have been purchased and delivered to the Lake Erie Regional Grape

Research and Extension Center (LERGREC) through Penn State Extension and the Pennsylvania Dept of Agriculture.

I will be offering calibration services and coverage demonstrations to growers in both NY and PA next spring. I am developing data-driven dashboards to demonstrate the impacts of sprayer calibration in terms of economics and agroecology and am seeking funding to develop new research programs exploring best practices for nozzle selection and replacement rates, and best practices for drift reduction and improved coverage.



Customized equipment for pesticide sprayer calibration



Spray coverage demo with water sensitive paper

Lake Erie Regional Grape Program (LERGP) Jennifer Phillips Russo & Megan Luke, LERGP Extension Team Cornell Cooperative Extension's Lake Erie Regional Grape Program (LERGP) is a membership program for NY and PA growers. As the Penn State Extension team member, I am responsible for providing resources and information to our growers via updates on Penn State research, surveys, and programs.

There were two Coffee Pot Meetings, two Field and Industry Representative meetings, a Field Day at the LERGREG, and a Chicken BBQ hosted by the Erie County Horticultural Society this quarter, reaching over 300 individuals. Crop Updates were released weekly to growers via email, I have written eight articles in this period.

The LERGP team is excited to be able to continue to offer educational outreach and pesticide recertification credits to our industry stakeholders, and I am happy to be able to add core credit presentations for PA growers.

Lake Erie Regional Grape Program Vacancy The Lake Erie Regional Grape Program, Cornell Cooperative Extension, and Penn State Extension would like to assure you that we are working together to fill the vacant Business Management Specialist position on the Lake Erie Regional Grape Program team. We are currently accepting applications and have conducted several interviews for the position.



NEWA- Kim Knapppenberger, Viticulture Assistant

Thanks to a grant from the New York Wine and Grape Foundation 7 new KestrelMet 6000 weather stations were purchased to increase the range of coverage for both the Lake Erie and Finger Lakes grape regions. Three cellular stations have been installed in the Lake Erie region – Lake City, PA, Newfane, NY, and East Ripley, NY. Two of the four wifi stations marked for the Finger Lakes Region have been installed – Ovid, NY and Williamson, NY. Two remain to be installed in the next quarter. All of the installed stations are available on the NEWA network.

The Brant station received a new datalogger in July and has been very reliable since then. Hiccups are still occurring with the Kestrel-Met wifi station at CLEREL in Portland and troubleshooting continues.

VIP- Kim Knapppenberger

There were two new applicants to the program this quarter, both from Chautauqua County, that add up to 40.39 acres. As it stands, the total applicants are 54 and Concord grape acreage covered with this program is approximately 661 acres. 28 of these projects have been completed and reimbursements granted/on the way. To date, \$427,556.21 has been awarded in reimbursements.



There are currently 41 applicants from Chautauqua County (388 acres), 1 from Cattaraugus (1 acre), 1 from Steuben (2.69), 2 from Schuyler (10.02), 5 from Niagara (53.17), and 4 from Erie County (205.6).

During this quarter eight site visits were completed, two initial and six final site visits, there were 2 sites that needed a bit more work and warranted a second final site visit. Four applicants were able to verify the work done and expenses for the program and have the invoice requests submitted. There is still currently one applicant that has completed the work but has not submitted the supporting documents required.

A number of the current applicants have checked in this quarter with updates and we have been working on putting the financial information together for a few more as well. All applicants are encouraged to continue to submit invoices and logs as they are available to be placed in their files.

Four reimbursements were finalized this quarter totaling 9.95 acres and amounting to \$12,686.57.

Third Quarter 2023 totals:

Publications - Lake Erie Vineyard Notes Newsletters (1) and LERGP Crop Updates (8)

Podcasts(5) - weekly podcasts available on <http://lergp.com/podcasts>

Web resources - <http://lergp.cce.cornell.edu>, <http://lergp.com> and <https://www.efficientvineyard.com>

Like us on Facebook - Cornell-Lake-Erie-Research-and-Extension-Laboratory and EfficientVineyard

6592 West Main Rd. Portland, NY 14769 *** Phone: 716.792.2800